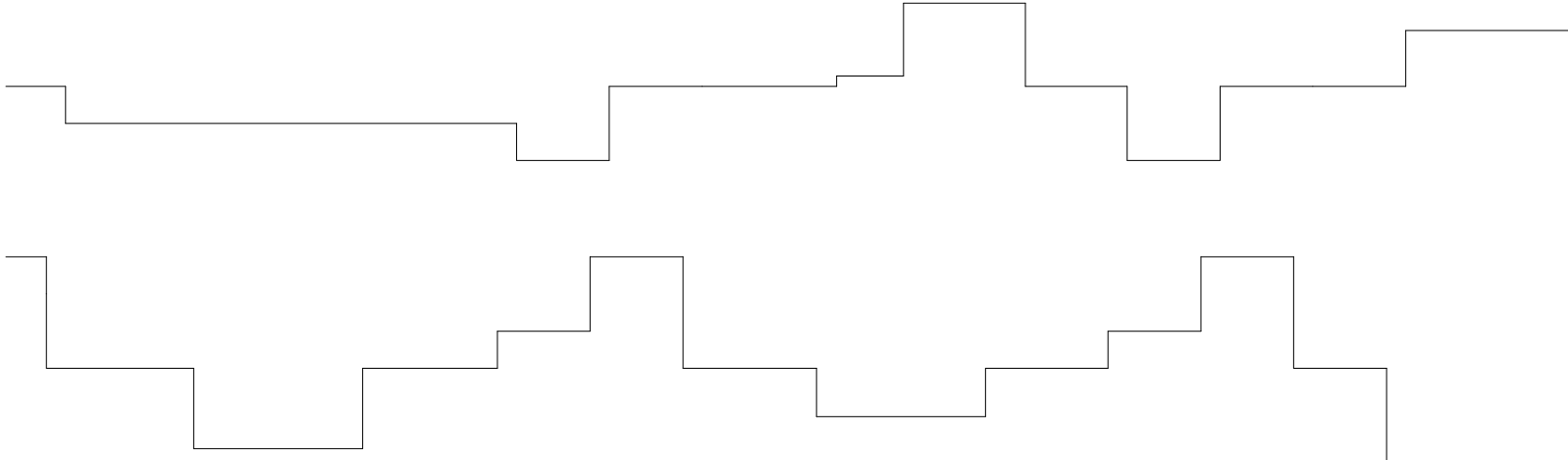


FUSELAGE UPPER PANEL - 1 REQ.

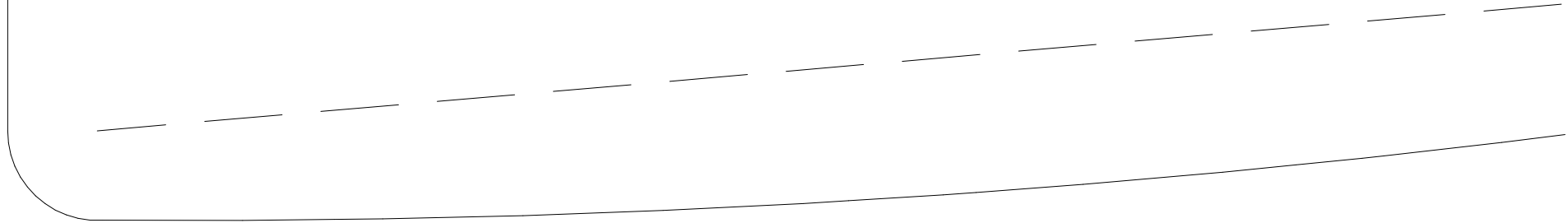


FUSELAGE LOWER PANEL - 1 REQ.





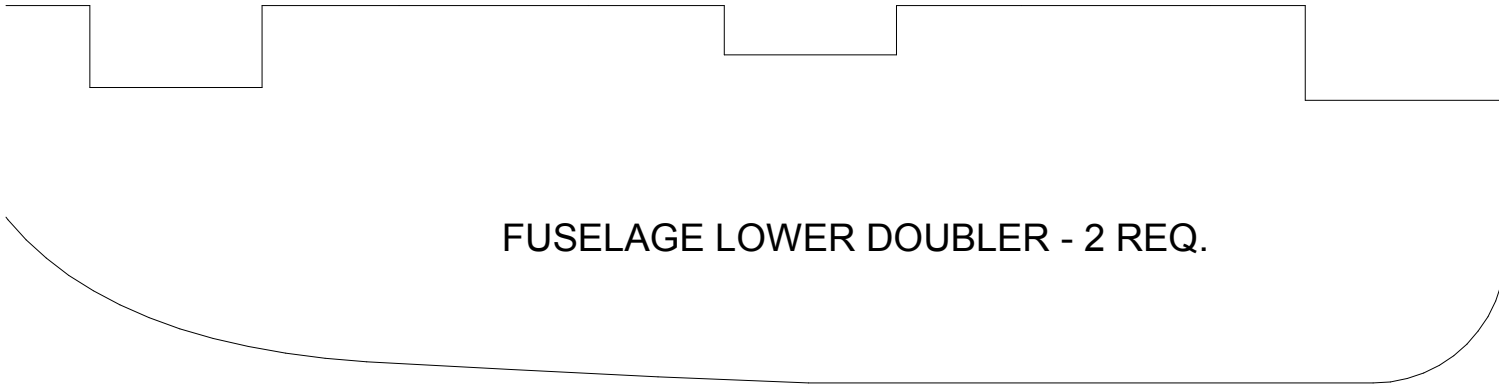
HORIZONTAL FUSELAGE AND TAIL ASSEMBLY - 1 REQ.

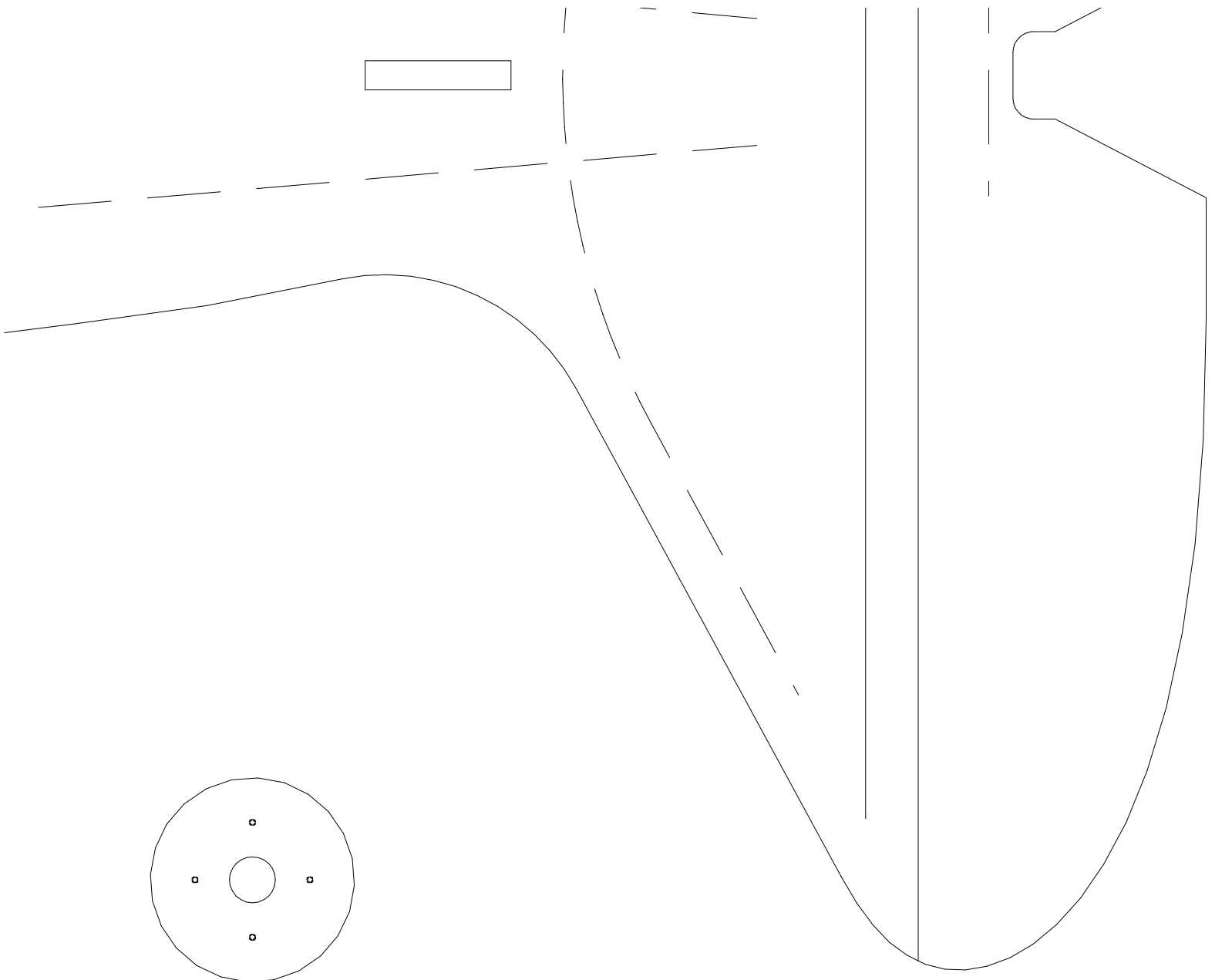


FUSELAGE UPPER DOUBLER - 2 REQ.



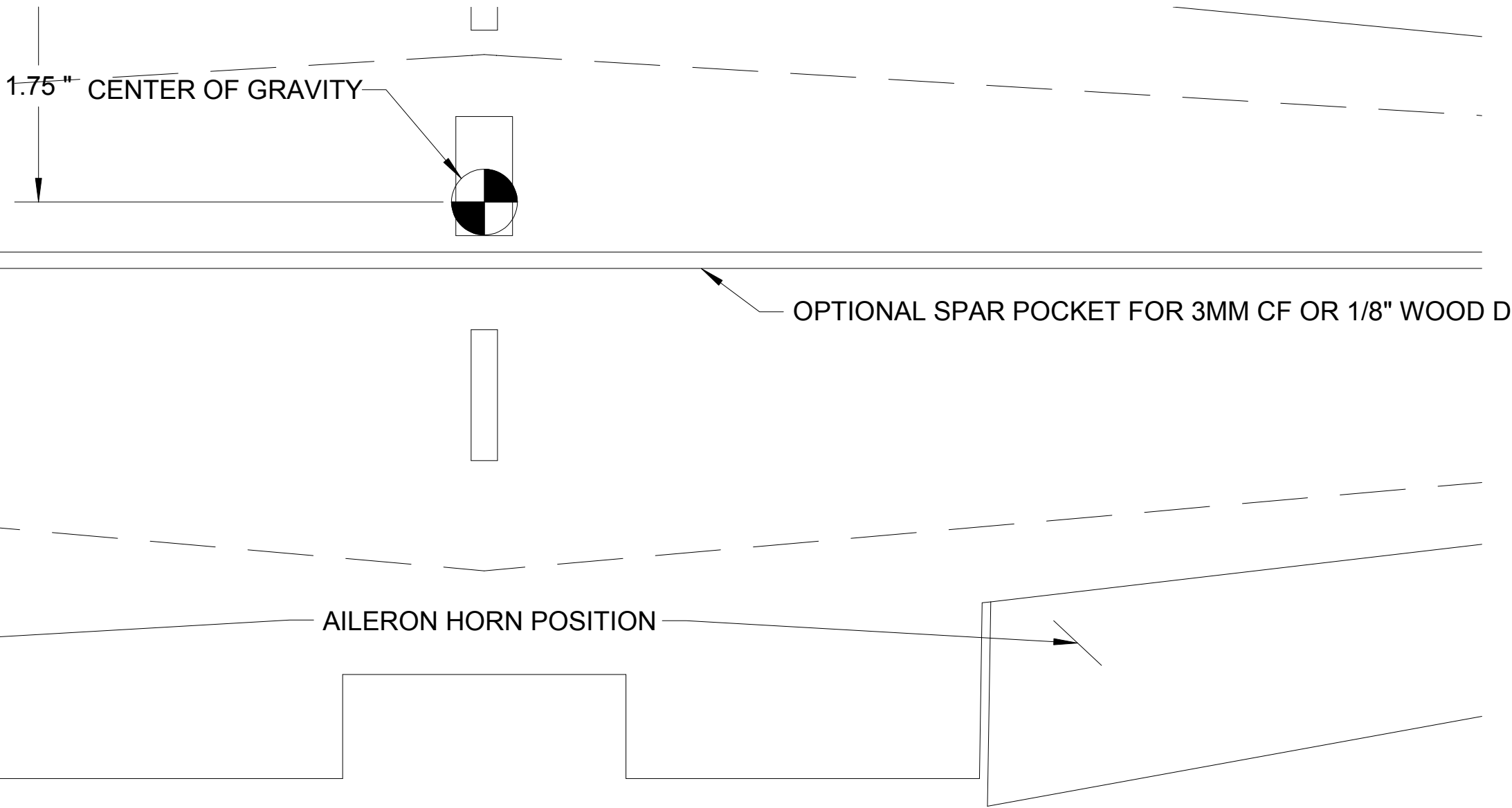
FUSELAGE LOWER DOUBLER - 2 REQ.





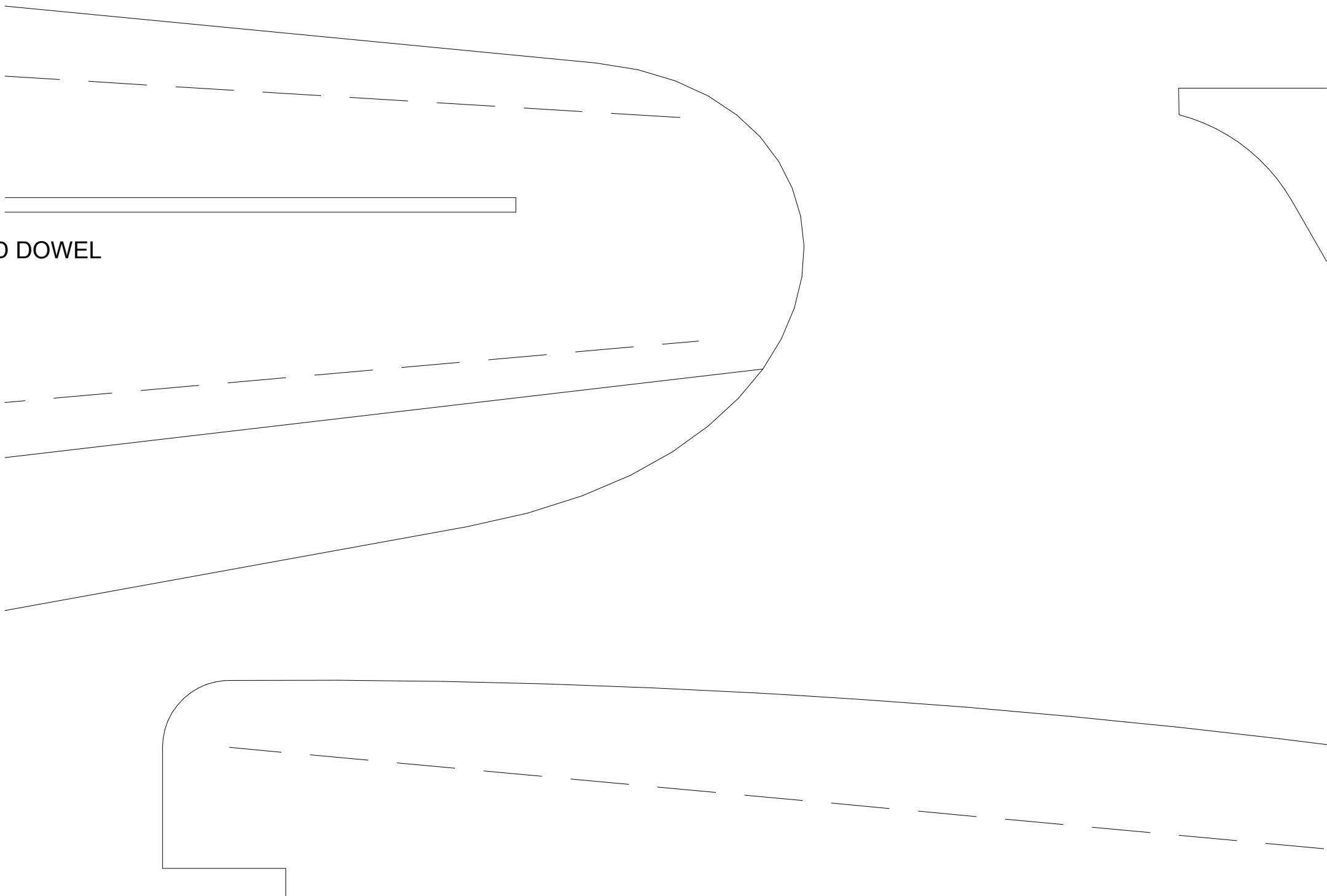
FIREWALL 1/8" PLY - 1 REQ.





NT .05" CF ROD REINFORCEMENTS USED IN THE PROTOTYPE

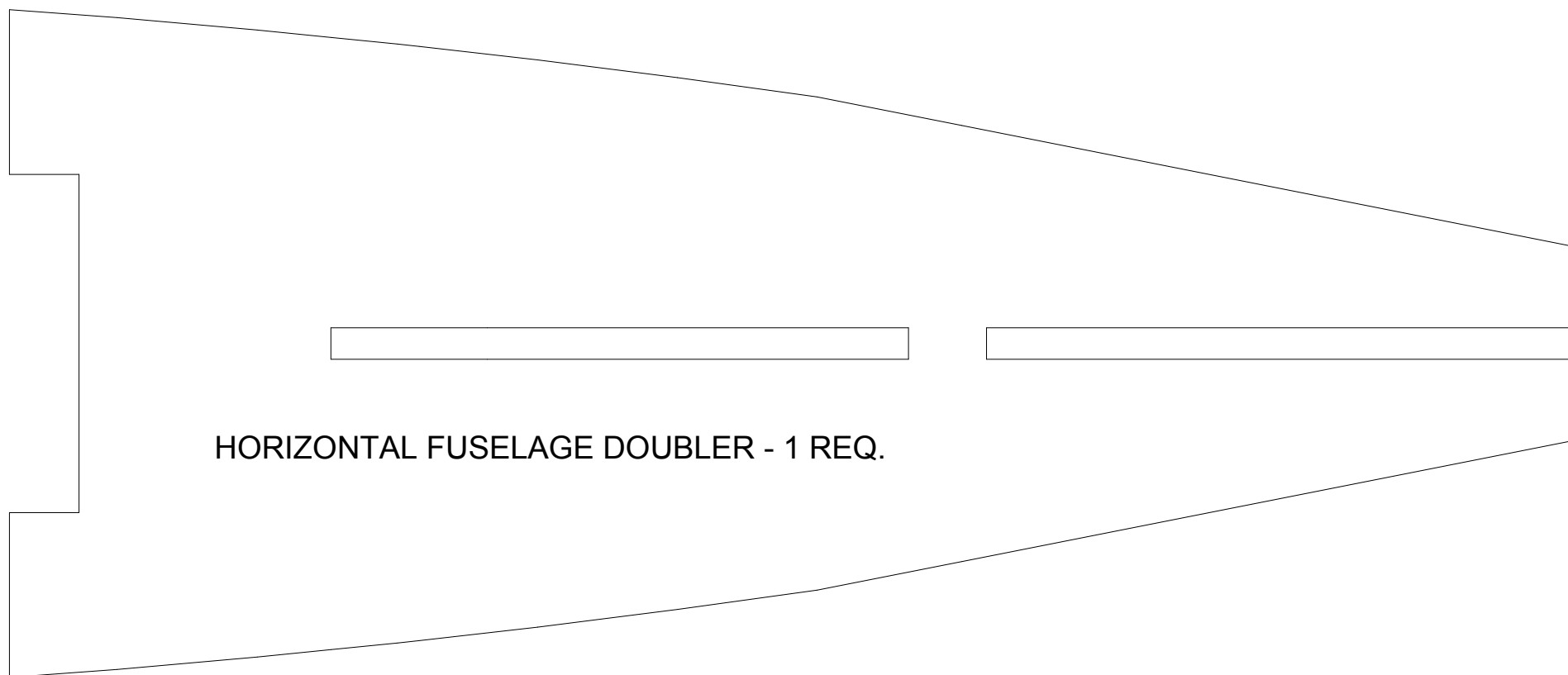
OD DOWEL



MAIN WING ROOT
EXT PNL - 1 REQ.

ELEVATOR
HORN
POSITION

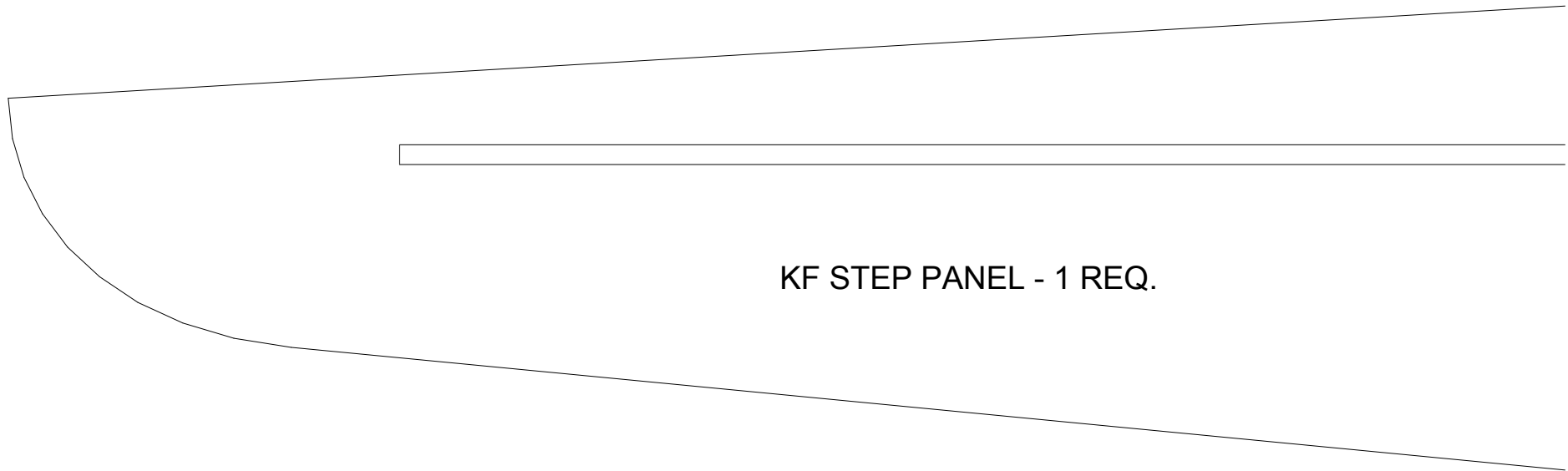




XXXXXX

SEMFF COMBAT PLANE

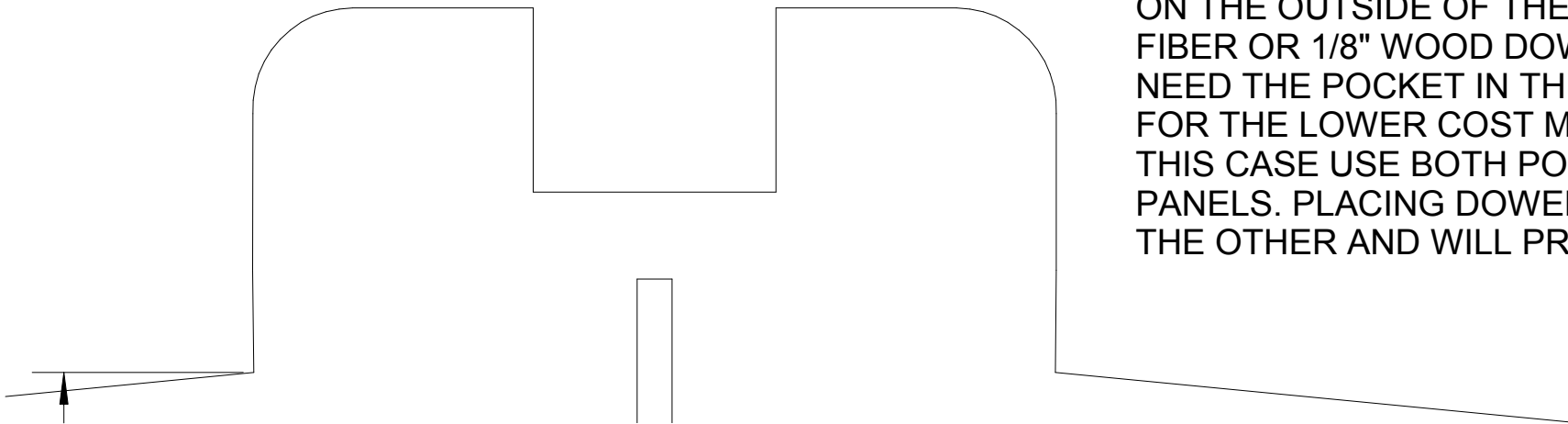
DESIGNED BY DZ1SFB ON RCGROUPS.COM
FOR NON COMMERCIAL USE ONLY
RELEASED 20-JUN-2011



KF STEP PANEL - 1 REQ.

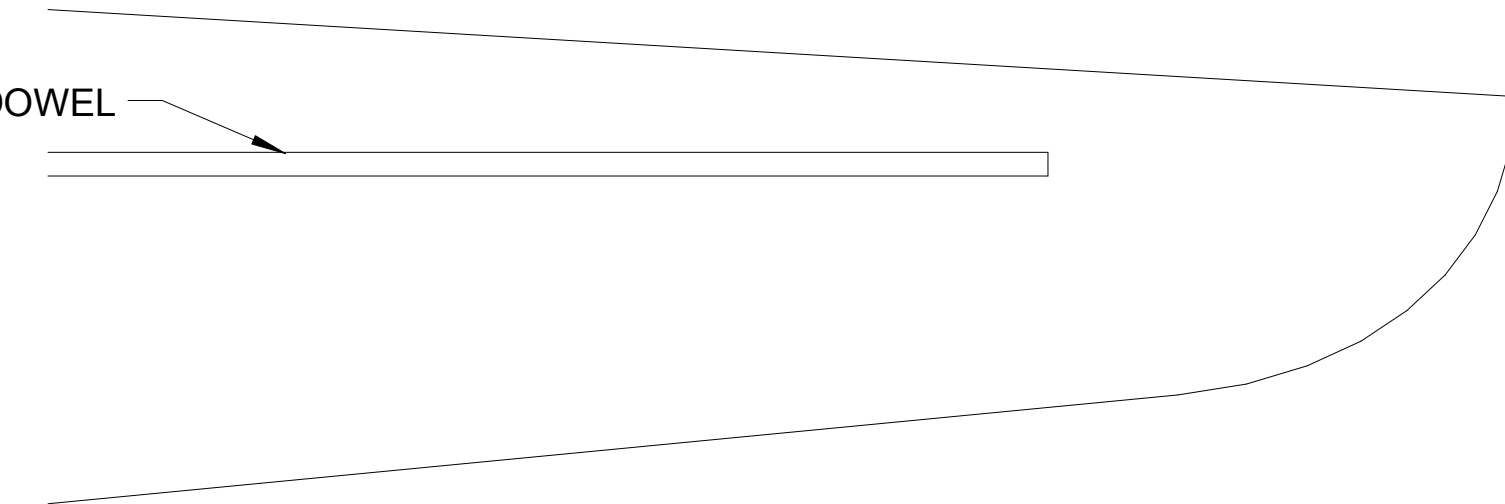
NOTE:
USE OF OPTIONAL SPAR POCKET

THIS OPTION IS TO BE USED IN PLACE OF STRAPPING ON THE OUTSIDE OF THE WING. YOU MAY USE CARBON FIBER OR 1/8" WOOD DOWEL ROD. IF USING CF YOU NEED THE POCKET IN THE MAIN WING PANEL. YOU MAY ALSO USE FOR THE LOWER COST MATERIAL OF WOOD DOWEL ROD. IN THIS CASE USE BOTH POCKETS ON THE MAIN WING PANELS. PLACING DOWEL ROD IN BOTH. THEY ARE THE OTHER AND WILL PROVIDE MORE THAN ADEQUATE



WRAPPING TAPE
THE CARBON
IF YOU ONLY
YOU CAN OPT
WOOD ROD. IN
WING AND KF
ARE ONE OVER
ADEQUATE STRENGTH.

OPTIONAL SPAR POCKET FOR 3MM CF OR 1/8" WOOD DOWEL



EQUIPMENT SPECIFICATIONS:

MOTOR: BLUE WONDER 1700 KV OR TOWERPRO 2408-21.

SERVOS: HXT 9G (2)

BATTERY: 900 MAH 2S

MATERIAL SPECIFICATIONS:

ALL MATERIAL IS DOW PROTECTION
BOARD III UNLESS OTHERWISE SPEC'D
