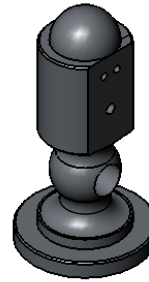
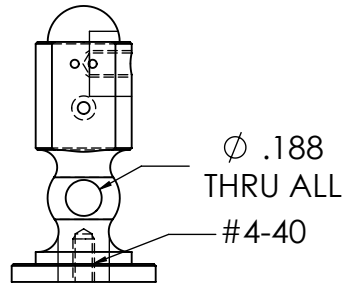
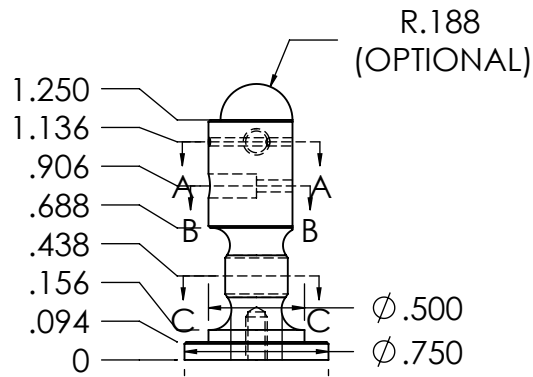


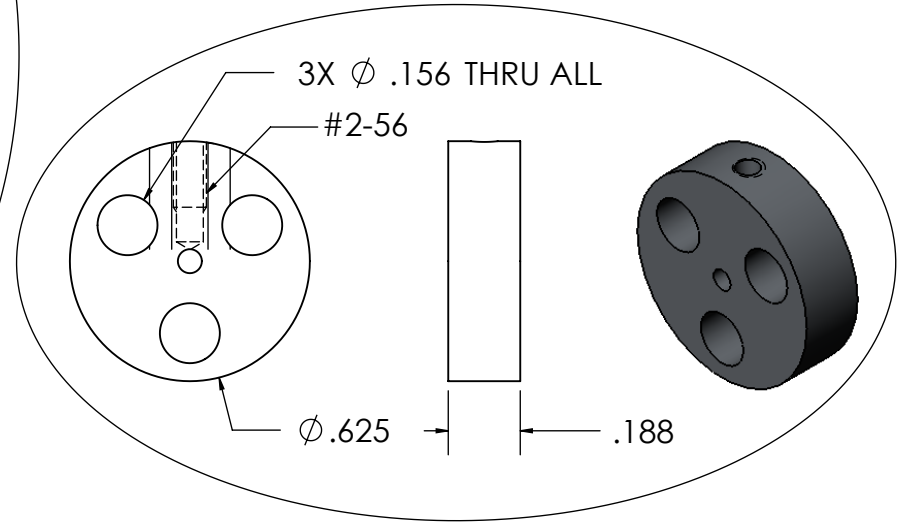
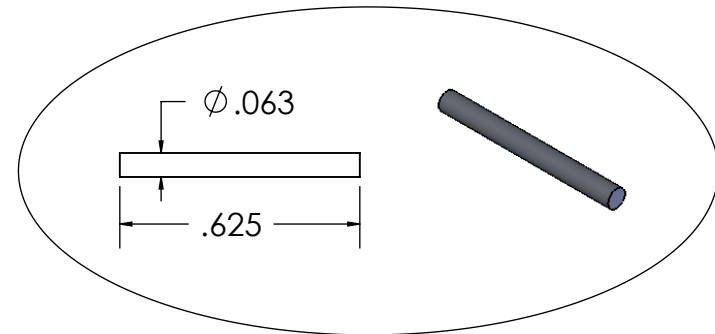
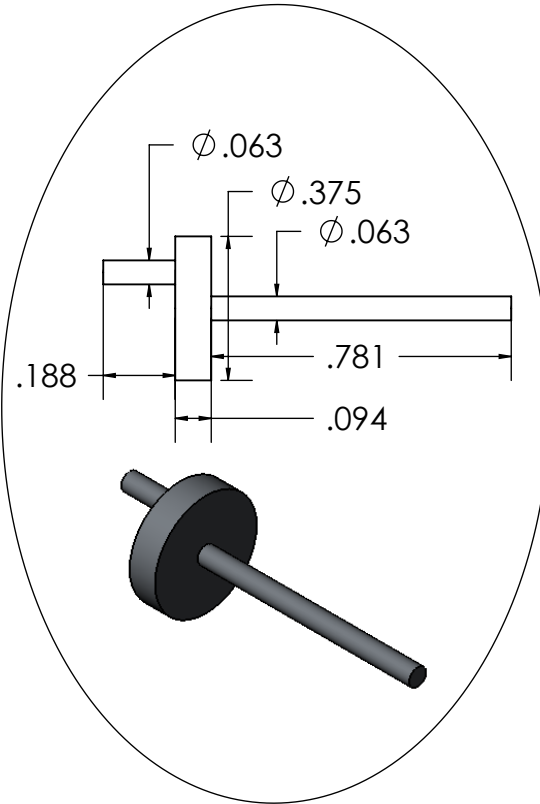
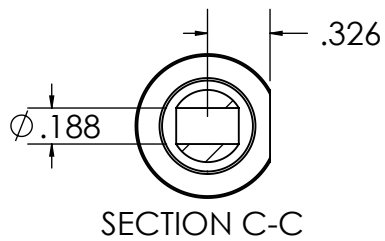
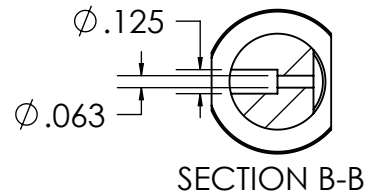
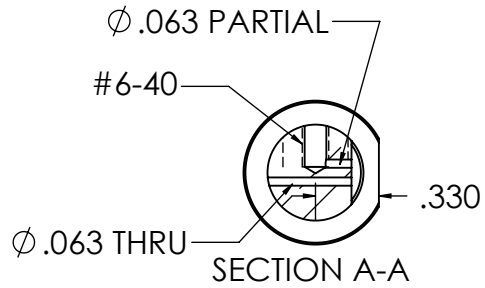
ASSEMBLED

ITEM NO.	PART NUMBER	RAW MATERIAL	QTY.
1	Column	3/4" OD x 2" STEEL	1
2	Cylinder	5/16" x 5/16" x 9/16" Brass	1
3	FlyWheel	3/4" OD x 1/2" STEEL	1
4	Bearing	1/4" OD x 3/4" Brass	1
5	Crankshaft	3/8" OD x 1-1/4" STEEL	1
6	PistonAndRod	1/4" OD x 1" Brass	1
7	Steam Connection	1/4" OD x 3/4" Brass	1
8	Pivot Pin	1/16" X 1/2" STEEL	1
9	SSFLATSLT 0.086-56x0.146-N		1
10	Spring		1

<b>END USER AGREEMENT</b> <small>THIS DRAWING MAY BE USED FREELY OR MODIFY FOR NON-BUSINESS PURPOSE. THE USER IS TOTALLY RESPONSIBLE FOR ACCURACY AND OWN PERSONAL SAFETY. THE ORIGINATOR AND PROVIDER ARE NOT RESPONSIBLE OR LIABLE FOR ANY DAMAGES INCURRED FROM THE CREATION OR USE OF THE PRODUCTS CONTAIN IN THIS DRAWING.</small>	±0.015	±0.005	± 0.5°			DATE		<b>A</b>	Elmer's Tiny
	2 PLC DEC	3 PLC DEC	ANGULAR			SCALE	2:1		
	TOLERANCE UNLESS OTHERWISE SPECIFIED			MATERIAL	FINISH	SHEET	1 OF 3		
						DRAWN	JONATHAN DINH		



  
0.014 Wire Steel Spring  
0.120 OD x 13/32



**END USER AGREEMENT**

THIS DRAWING MAY BE USED FREELY OR MODIFY FOR NON-BUSINESS PURPOSE.  
THE USER IS TOTALLY RESPONSIBLE FOR ACCURACY AND OWN PERSONAL SAFETY.  
THE ORIGINATOR AND PROVIDER ARE NOT RESPONSIBLE OR LIABLE FOR ANY DAMAGES  
INCURRED FROM THE CREATION OR USE OF THE PRODUCTS CONTAIN IN THIS DRAWING.

±0.015	±0.005	± 0.5°
2 PLC DEC	3 PLC DEC	ANGULAR
TOLERANCE UNLESS OTHERWISE SPECIFIED		

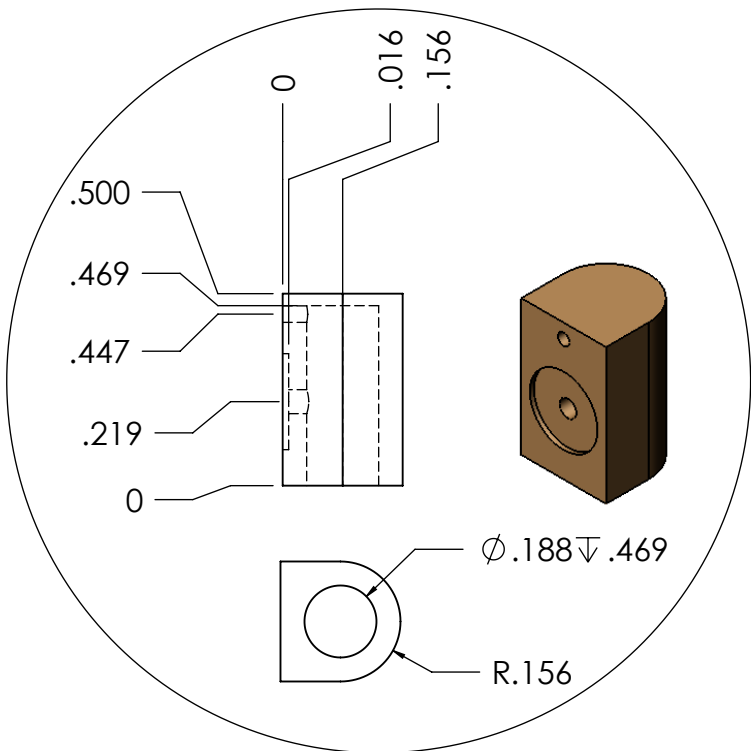
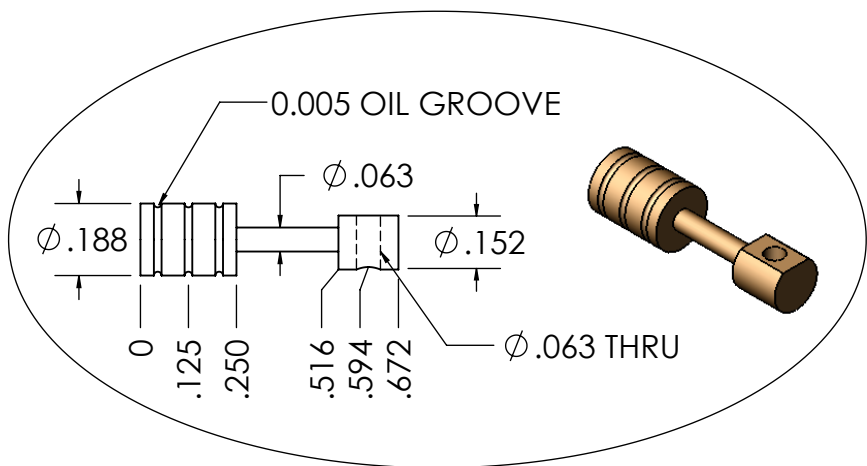
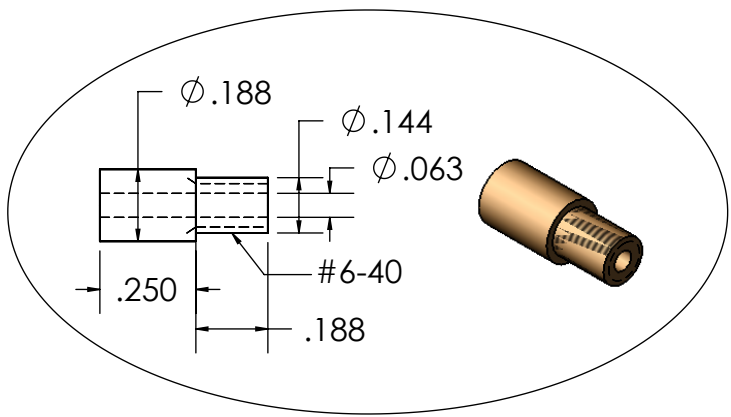
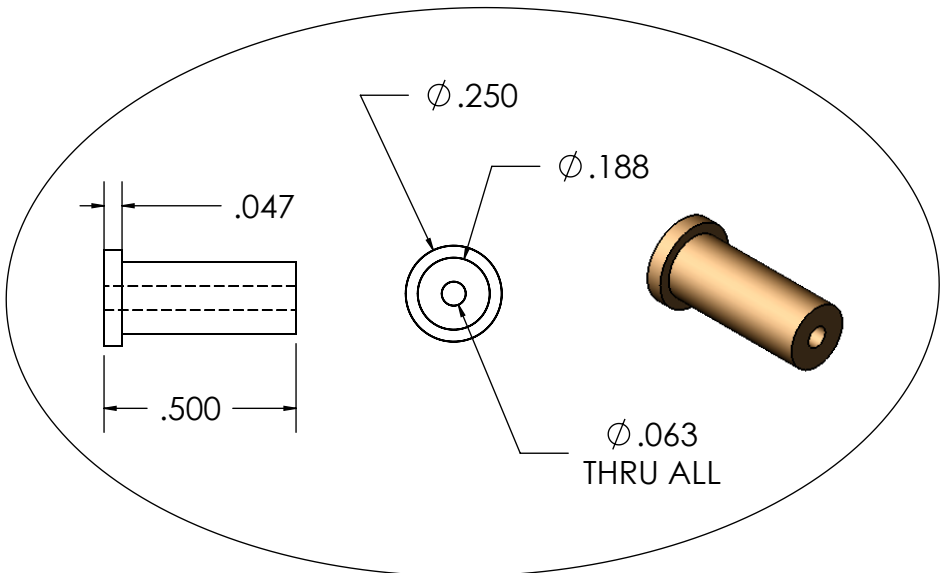
MATERIAL
----------

FINISH
--------

DATE	
SCALE	1:1
SHEET	2 OF 3
DRAWN	JONATHAN DINH

**A**

Elmer's Tiny



**END USER AGREEMENT**  
 THIS DRAWING MAY BE USED FREELY OR MODIFY FOR NON-BUSINESS PURPOSE.  
 THE USER IS TOTALLY RESPONSIBLE FOR ACCURACY AND OWN PERSONAL SAFETY.  
 THE ORIGINATOR AND PROVIDER ARE NOT RESPONSIBLE OR LIABLE FOR ANY DAMAGES  
 INCURRED FROM THE CREATION OR USE OF THE PRODUCTS CONTAIN IN THIS DRAWING.

$\pm 0.015$	$\pm 0.005$	$\pm 0.5^\circ$			DATE		<b>A</b>
2 PLC DEC	3 PLC DEC	ANGULAR			SCALE	2:1	
TOLERANCE UNLESS OTHERWISE SPECIFIED			MATERIAL	FINISH	DRAWN	JONATHAN DINH	

Elmer's Tiny