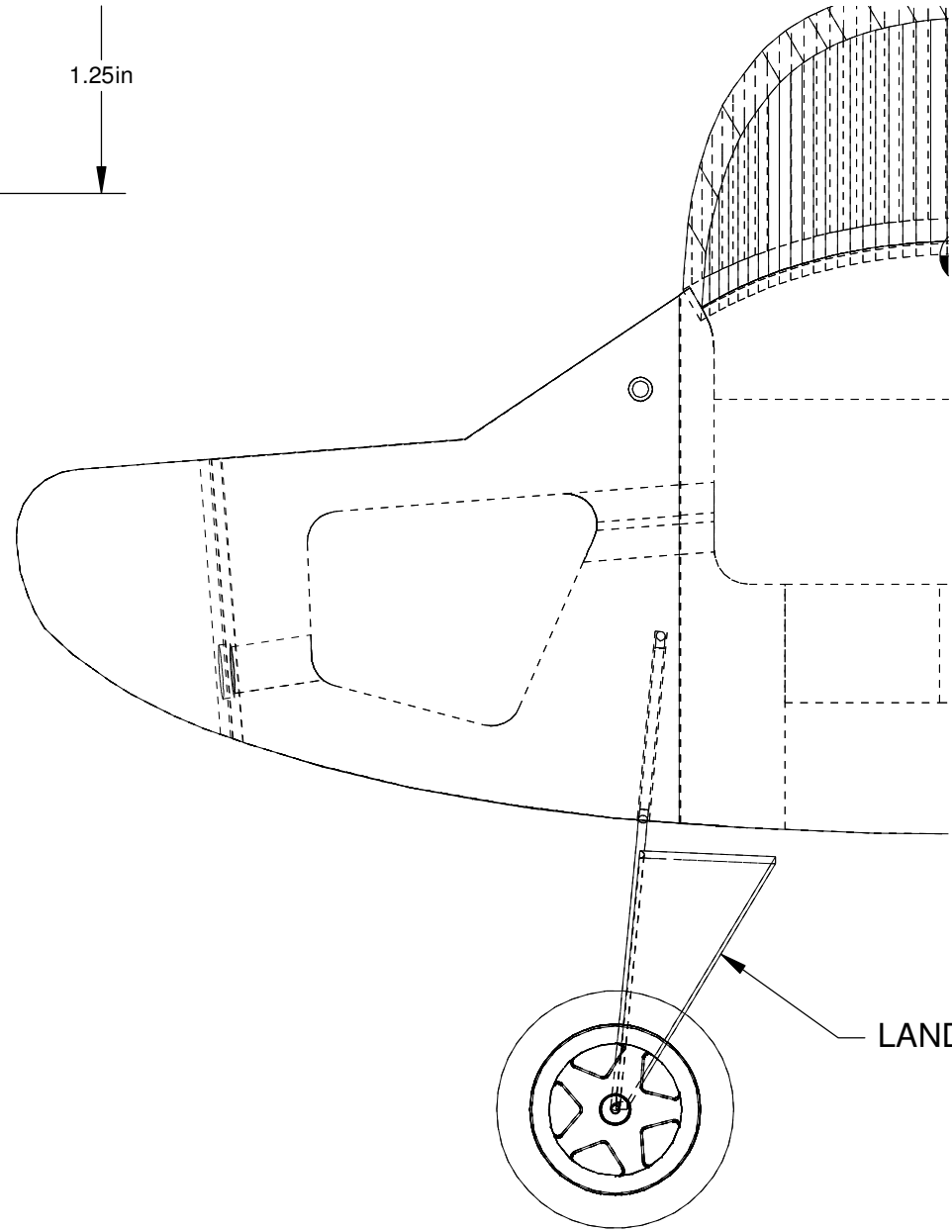
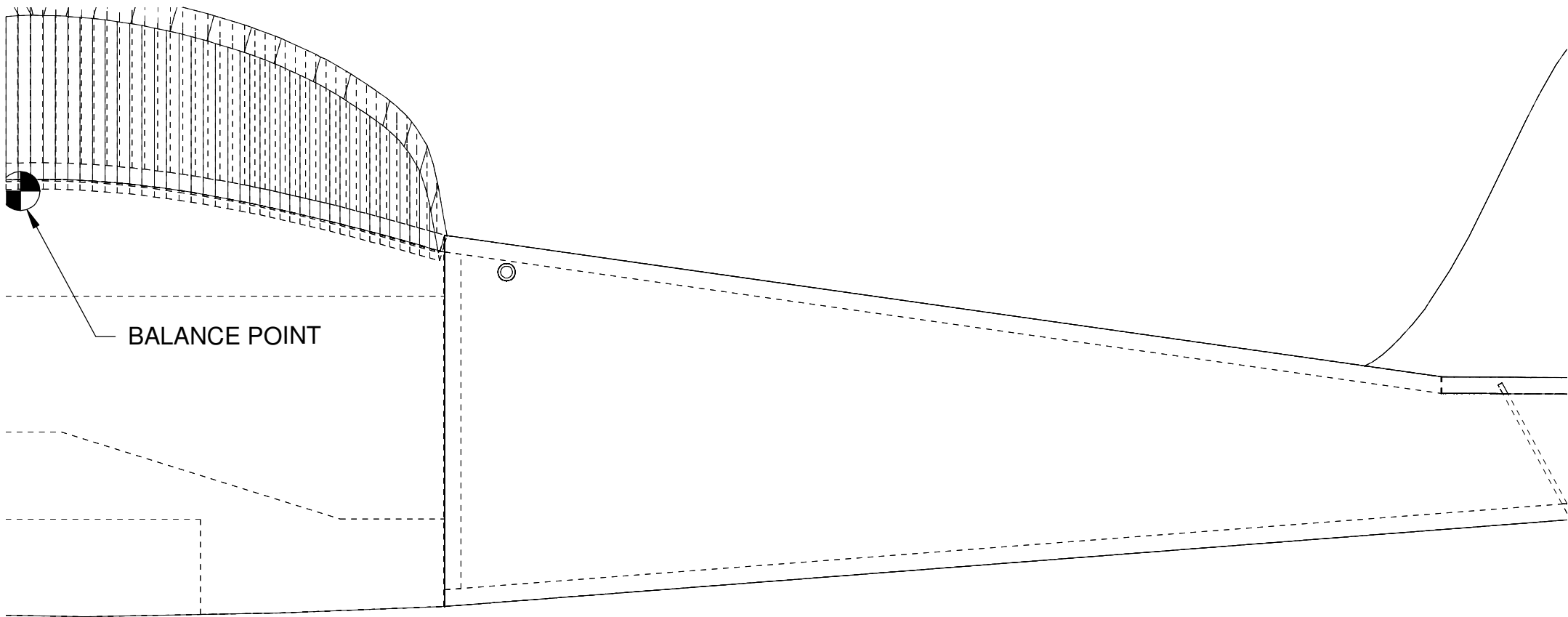


1.25in



LANDING



ANDING GEAR FAIRINGS OPTIONAL



# FOAMIE RASCAL 27

By dz1sfb on RCGroups.com  
commercial rights reserved  
for personal use only

## **SPECIFICATIONS**

Wingspan: 26.75"

Length: 18.625"

RTF Weight: 3.15 oz. as equipped

Motor: E-Flite Park 180

ESC Castle Creations Thunderbird 6

Battery: 250 Mah 2s Full River

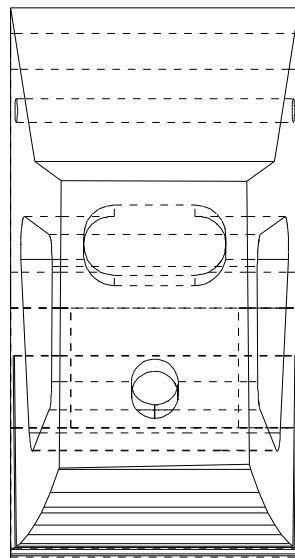
Receiver: Spektrum AR6300

Servos: 2 Blue Arrow 2.5g

Wheels: Dubro 1.23" Park Flyer

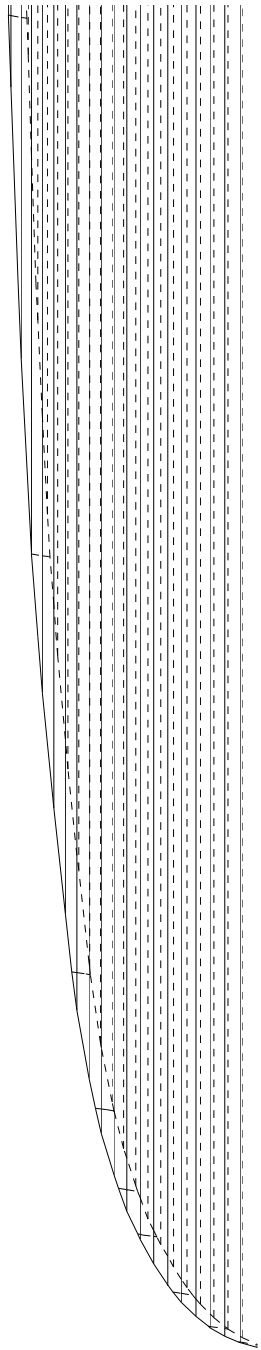
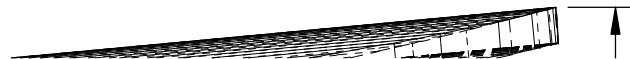
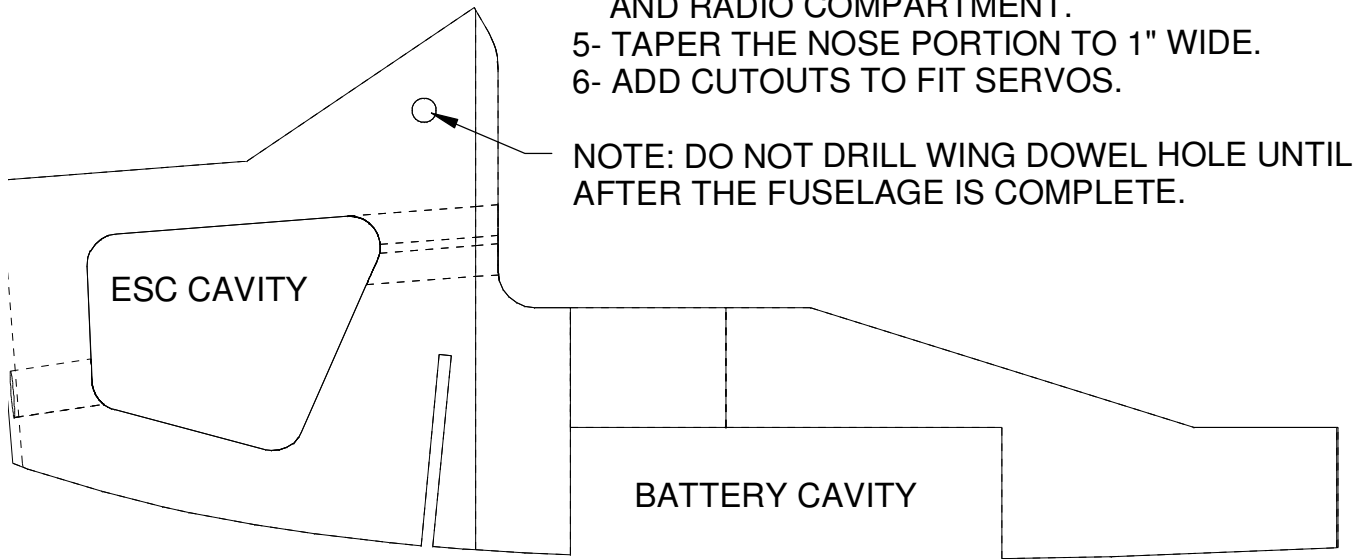
Pushrods: .050" Carbon Fiber with .032" Music Wire ends

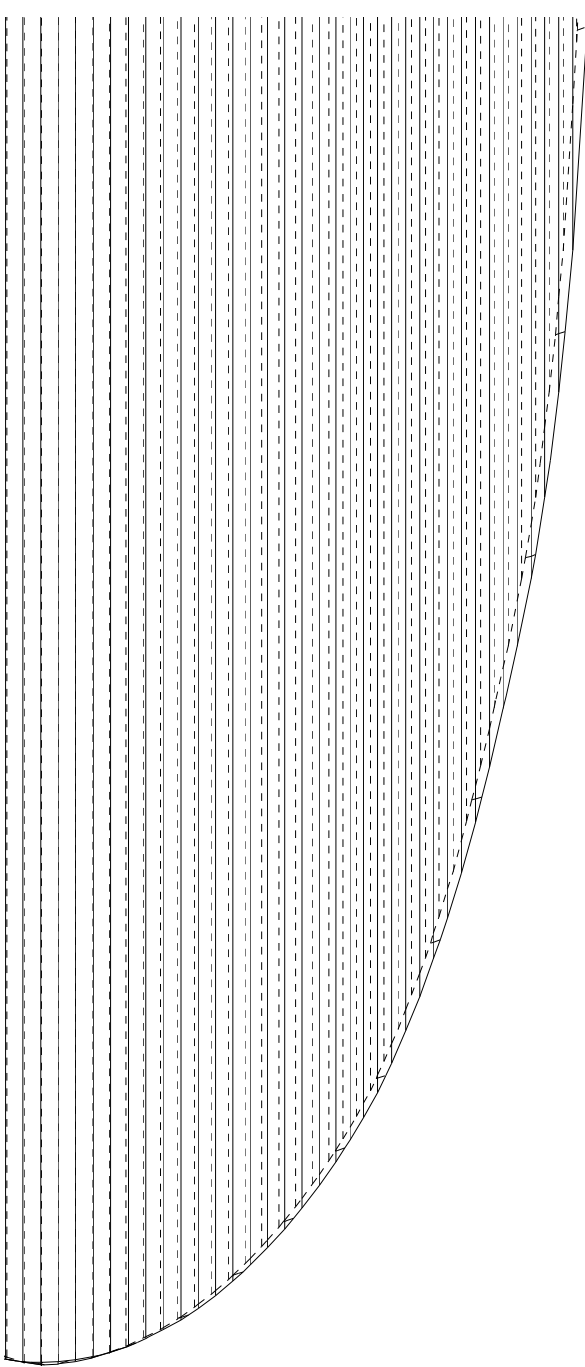
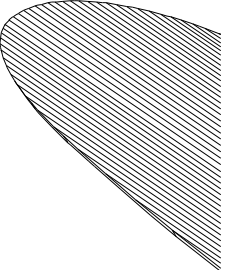
**RELEASED 26 APRIL 2009**



## MONOBLOCK DETAILS:

- 1- MATERIAL 1.5" BLU-COR.
- 2- START BY CUTTING OUT THE PERIMETER.
- 3- THEN CUT THE NOSE CAVITY.
- 4- NEXT ADD PASSAGE BETWEEN NOSE CAVITY AND RADIO COMPARTMENT.
- 5- TAPER THE NOSE PORTION TO 1" WIDE.
- 6- ADD CUTOUTS TO FIT SERVOS.



- 
- 
12. GLUE HORIZONTAL STAB/ELEVATOR ASSY TO FUSELAGE.
  13. GLUE VERTICAL STAB/RUDDER ASSY TO FUSELAGE ASSY.
  14. ADD LANDING GEAR AND TAIL SKID
  15. PAINT OR TAPE TRIM MODEL.
  16. ADD WING HOLD DOWN DOWELS.

#### WING ASSEMBLY -

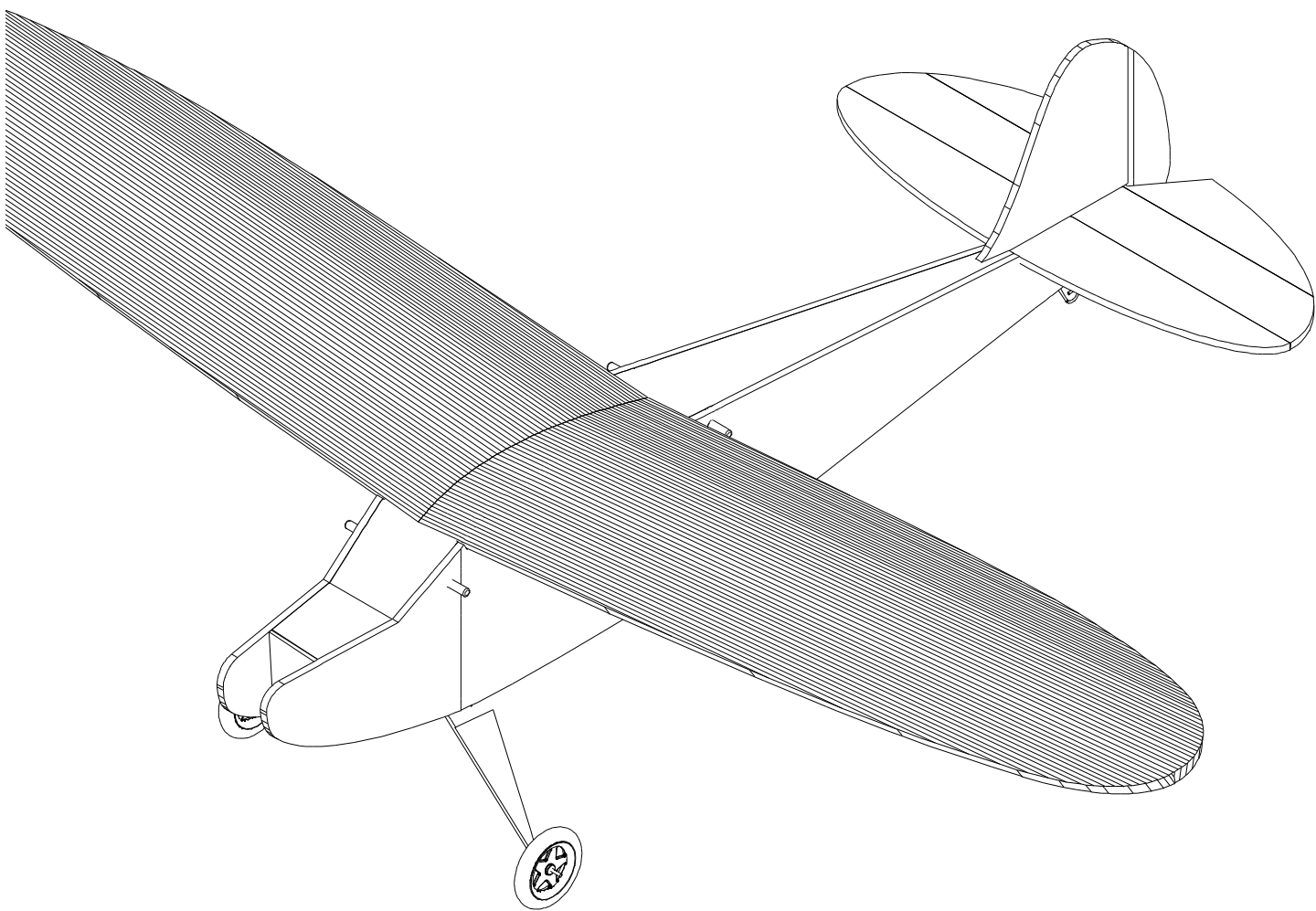
1. BAKE CUTOUT WING PANELS IN WING BAKE JIG OR FORM WITH YOUR FAVORITE METHOD.
2. BEVEL WING ROOT SURFACE TO PROVIDE 1 - 1.25" OF DIHEDRAL PER TIP AS MEASURED FROM THE TOP OF THE AIRFOIL.
3. GLUE WING PANELS TOGETHER AND HOLD WITH PAINTERS TAPE UNTIL DRY.
4. WRAP CENTER JOINT WITH ONE LAYER OF CLEAR 2" WIDE PACKING TAPE.
5. ADD AN 8" STRIP OF 1" WIDE FIBER REINFORCED STRAPPING TAPE UNDER THE LE AND TE EDGE OF THE WING.
6. ADD TRIM AS DESIRED.

#### REMAINING DETAILS -

1. MOUNT MOTOR
2. INSTALL PUSHRODS AND CONTROL HORNS
3. INSTALL SERVOS - I USE UHU CREATIVE AHESIVE HERE.
4. PLUG IN ESC AND SERVOS TO RX AND MOTOR.
5. ADD PASS THRU HOLE FOR BATTERY PLUG TO GET TO THE BATTERY CAVITY.
6. CHECK CG WITH CHARGED BATTERY.
7. GO FLY AND HAVE FUN!

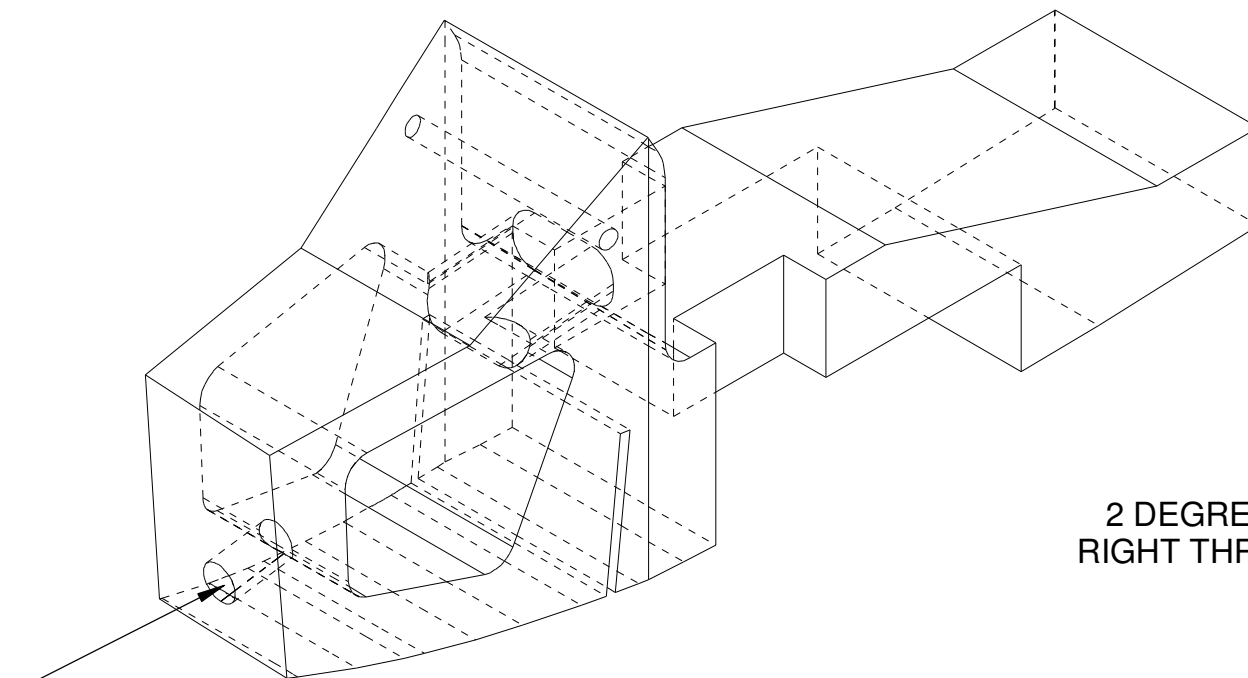
**NOTE: USE CARBON FIBER PUSHROD MATERIAL FOR ELEVATOR JOINER ROD.**



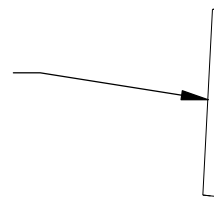


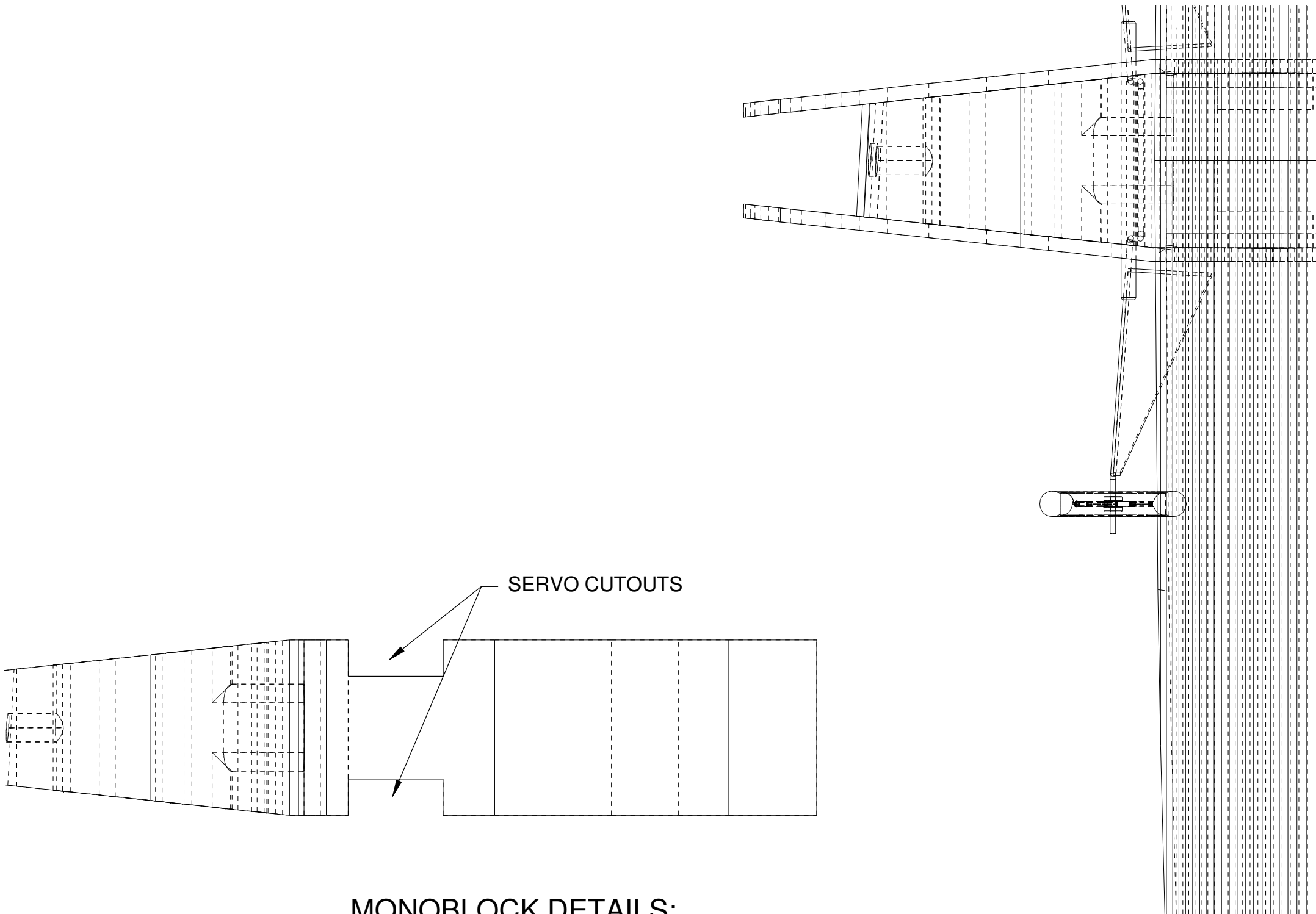


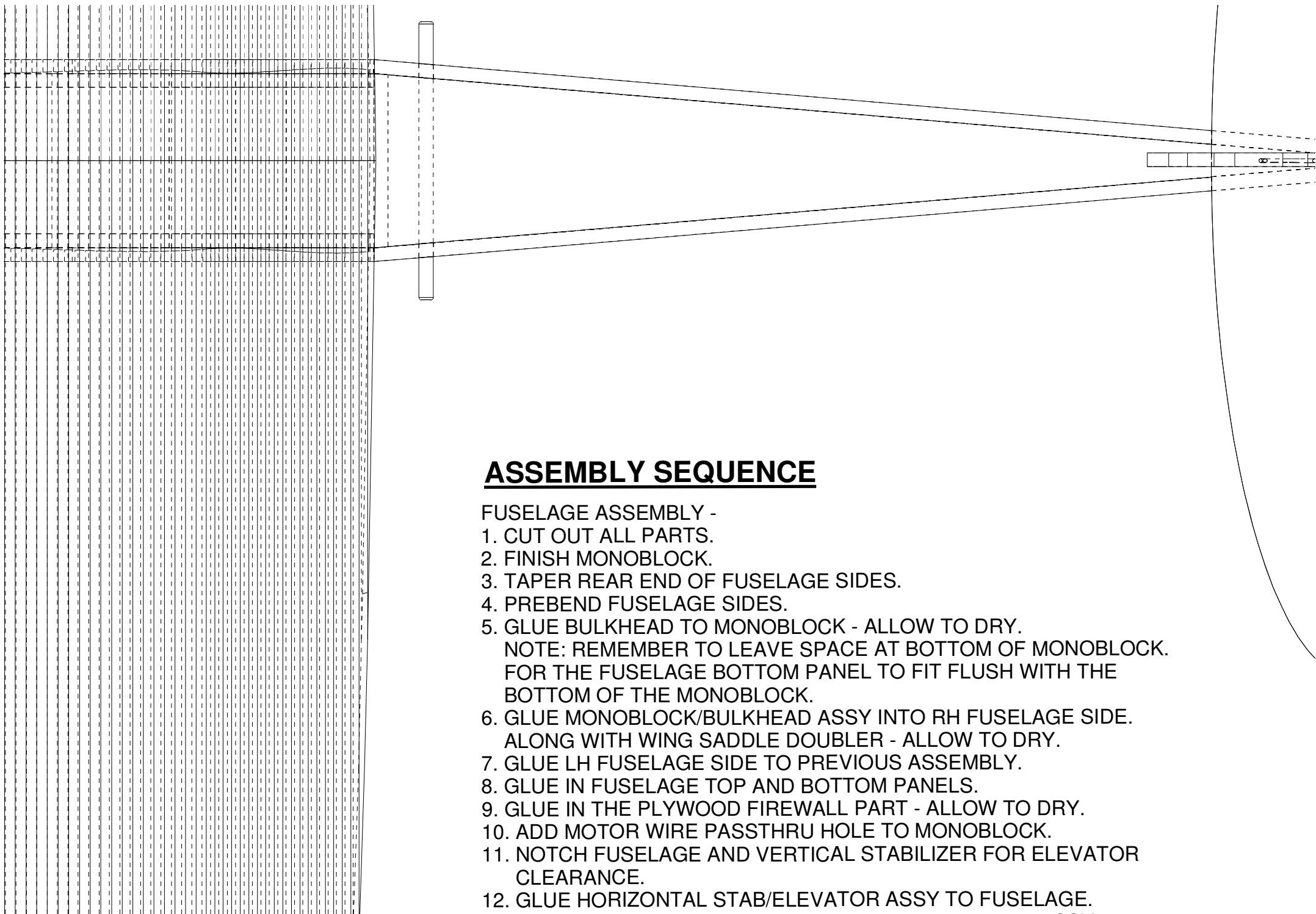
MOTOR WIRE PASS THRU



2 DEGREES  
RIGHT THRUST







## **ASSEMBLY SEQUENCE**

### FUSELAGE ASSEMBLY -

1. CUT OUT ALL PARTS.
2. FINISH MONOBLOCK.
3. TAPER REAR END OF FUSELAGE SIDES.
4. PREBEND FUSELAGE SIDES.
5. GLUE BULKHEAD TO MONOBLOCK - ALLOW TO DRY.  
NOTE: REMEMBER TO LEAVE SPACE AT BOTTOM OF MONOBLOCK.  
FOR THE FUSELAGE BOTTOM PANEL TO FIT FLUSH WITH THE  
BOTTOM OF THE MONOBLOCK.
6. GLUE MONOBLOCK/BULKHEAD ASSY INTO RH FUSELAGE SIDE.  
ALONG WITH WING SADDLE DOUBLER - ALLOW TO DRY.
7. GLUE LH FUSELAGE SIDE TO PREVIOUS ASSEMBLY.
8. GLUE IN FUSELAGE TOP AND BOTTOM PANELS.
9. GLUE IN THE PLYWOOD FIREWALL PART - ALLOW TO DRY.
10. ADD MOTOR WIRE PASSTHRU HOLE TO MONOBLOCK.
11. NOTCH FUSELAGE AND VERTICAL STABILIZER FOR ELEVATOR  
CLEARANCE.
12. GLUE HORIZONTAL STAB/ELEVATOR ASSY TO FUSELAGE.
13. GLUE VERTICAL STAB/RUDDER ASSY TO FUSELAGE ASSY.
14. ADD LANDING GEAR AND TAIL SKID.

