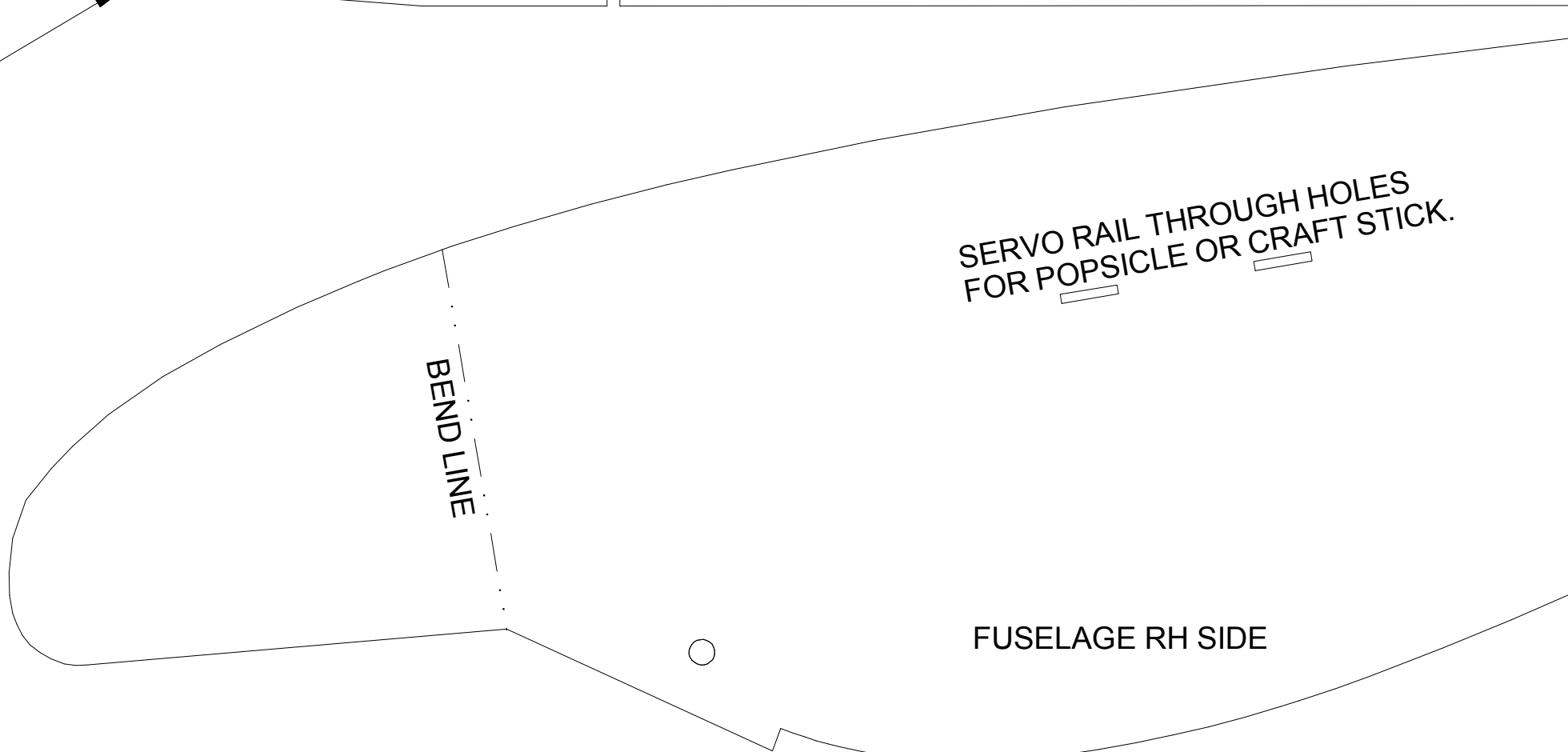
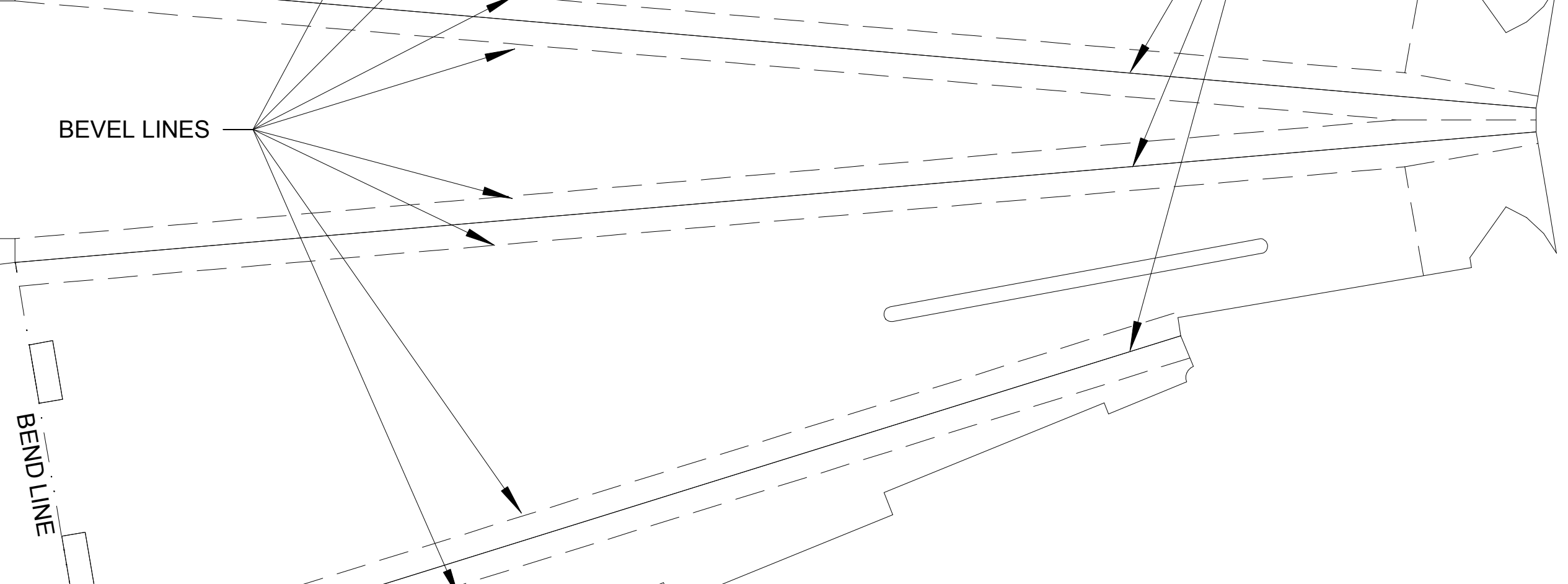
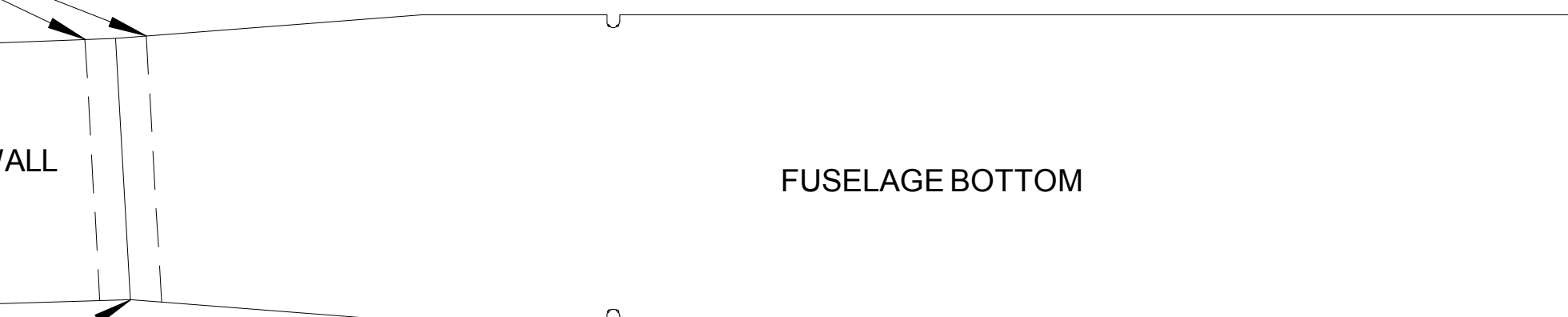
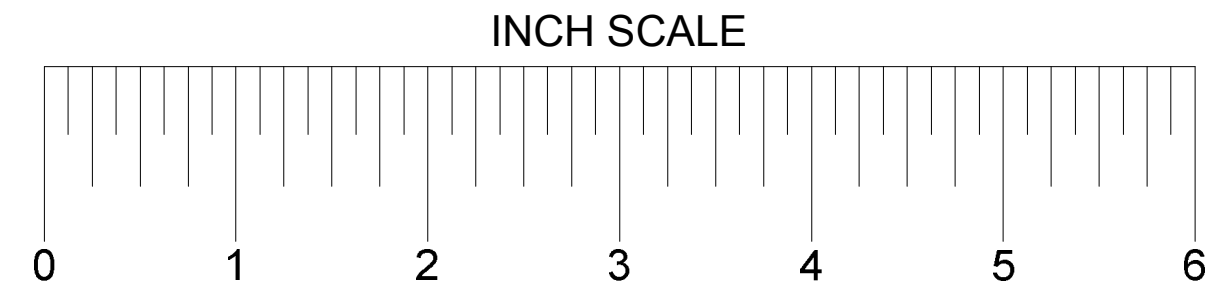
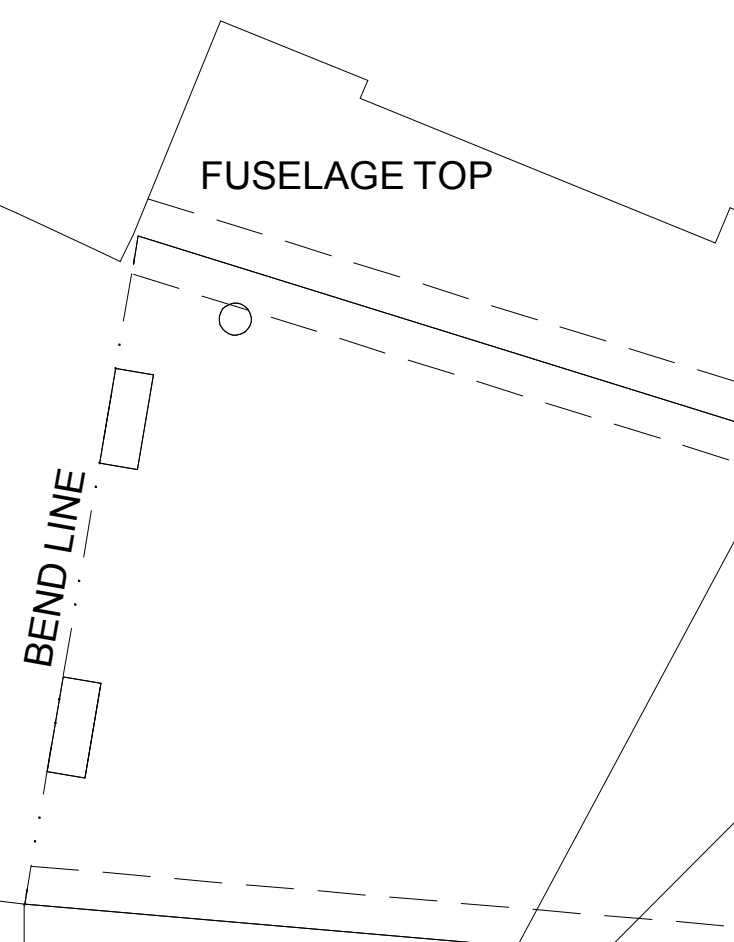
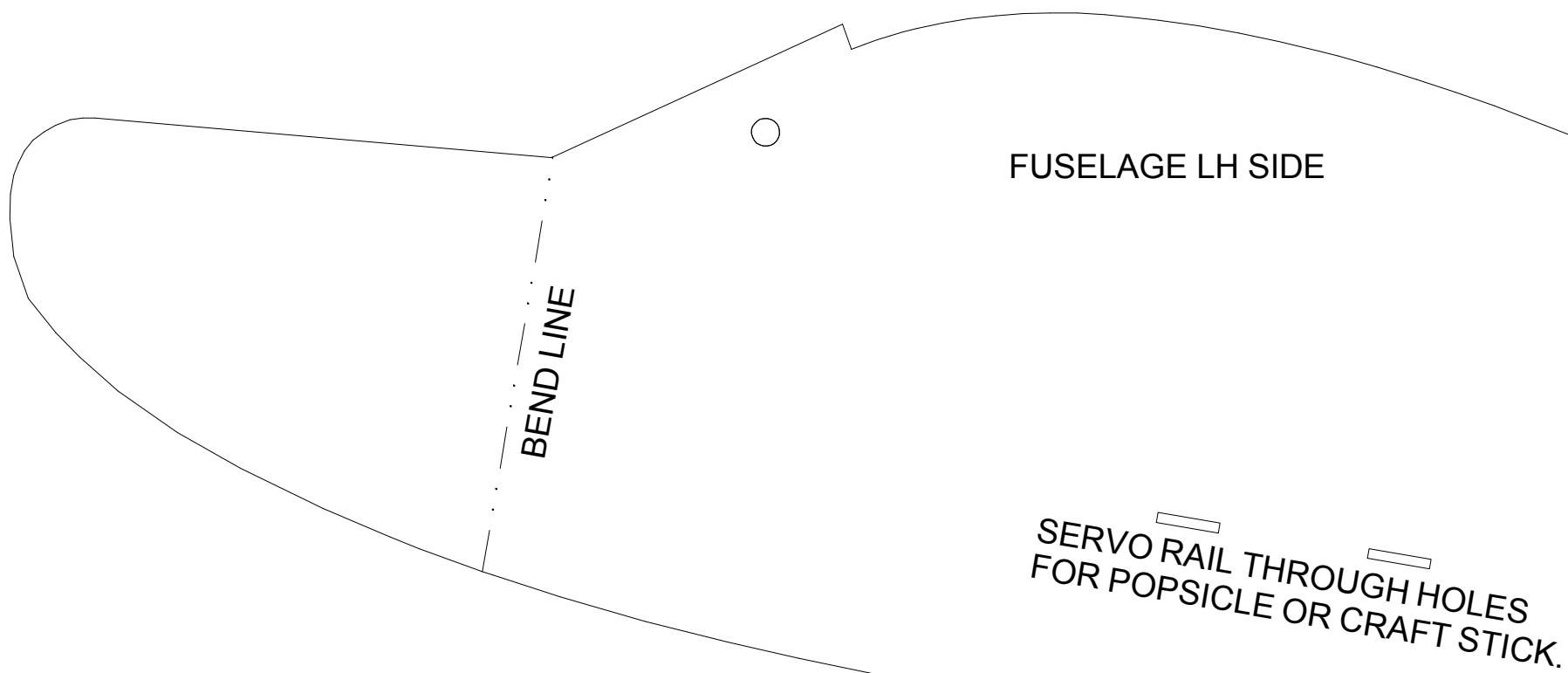
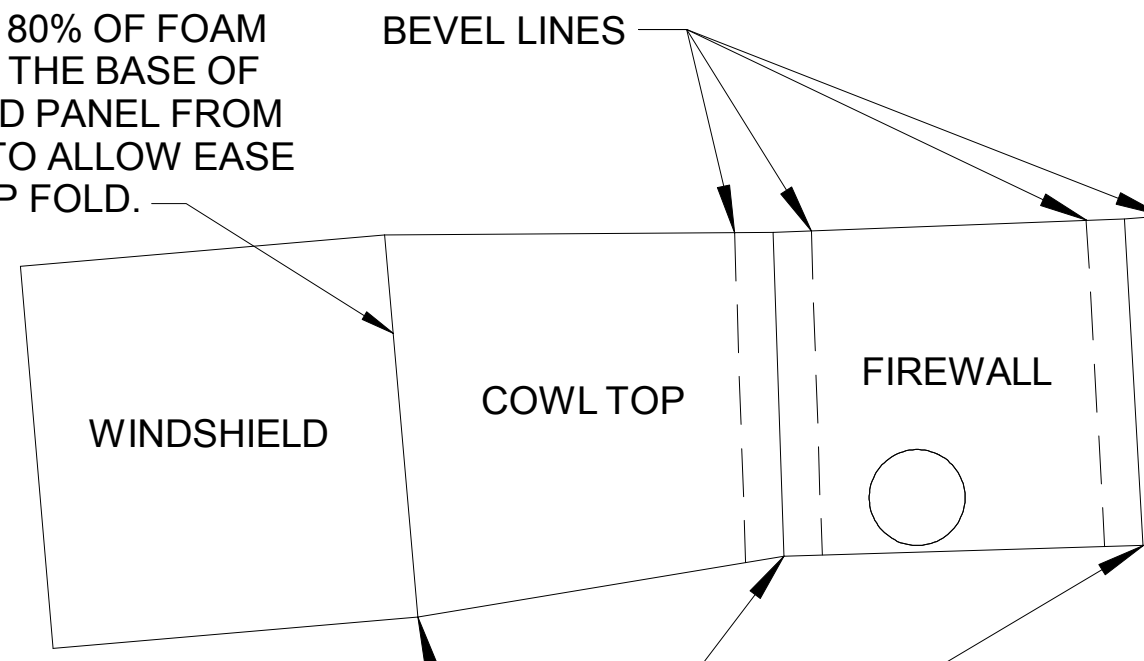
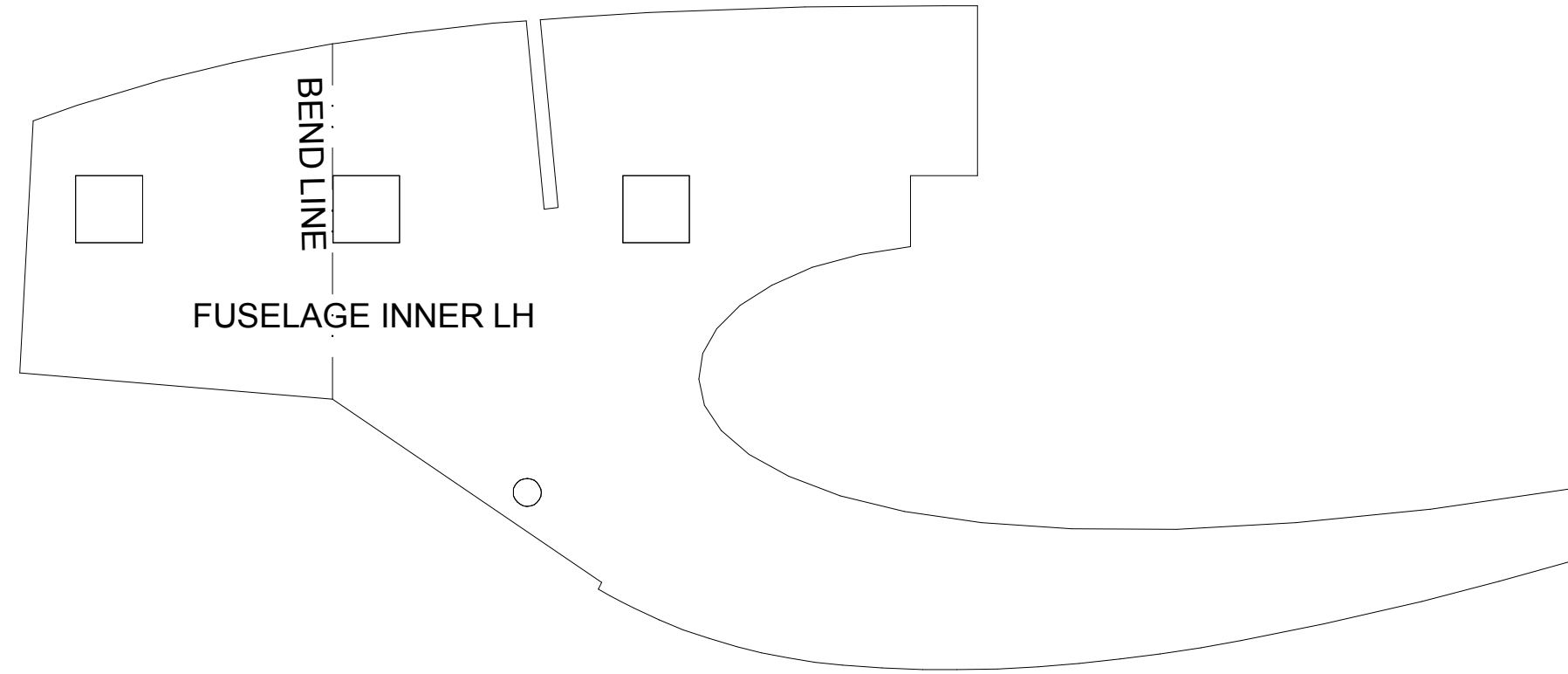


NOTE:  
CUT THROUGH 80% OF FOAM THICKNESS AT THE BASE OF THE WINDSHEILD PANEL FROM THE BACK SIDE TO ALLOW EASE OF AN UP FOLD.

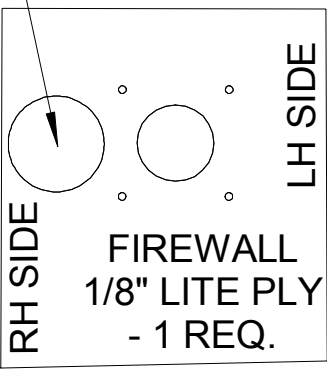


LANDING GEAR LEG FAIRING - 2 REQ (1 LH & 1 RH).

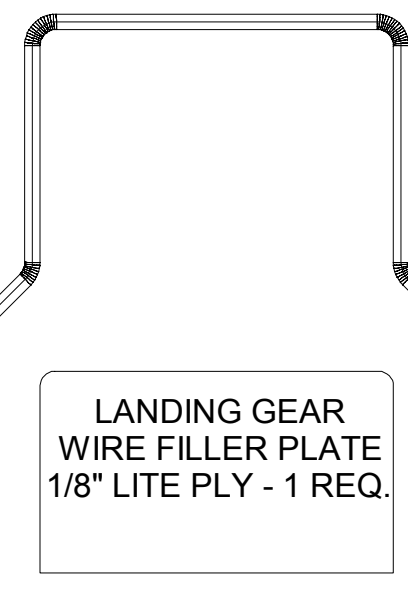
CHANNEL FOR LANDING GEAR LEG HALF WAY THROUGH FOAM



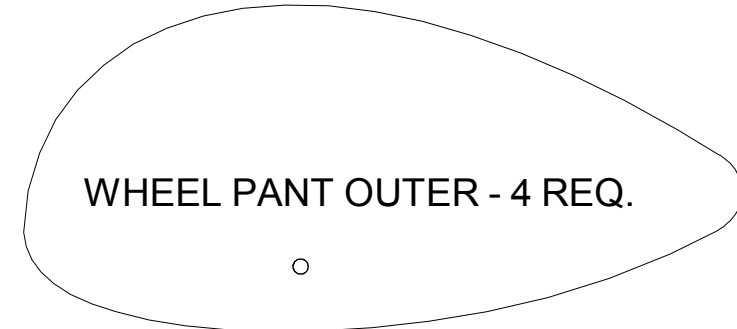
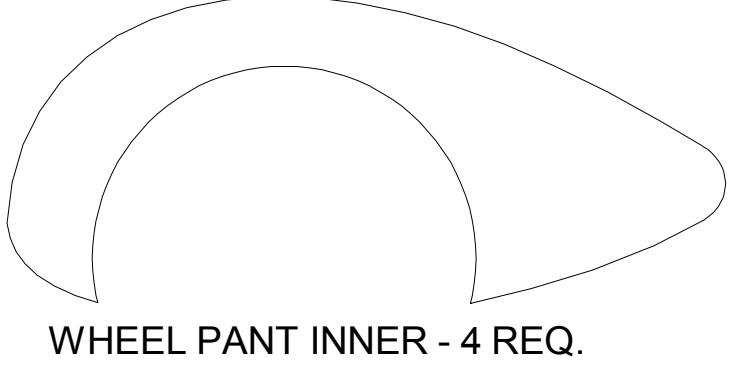
MOTOR WIRES ACCESS HOLE



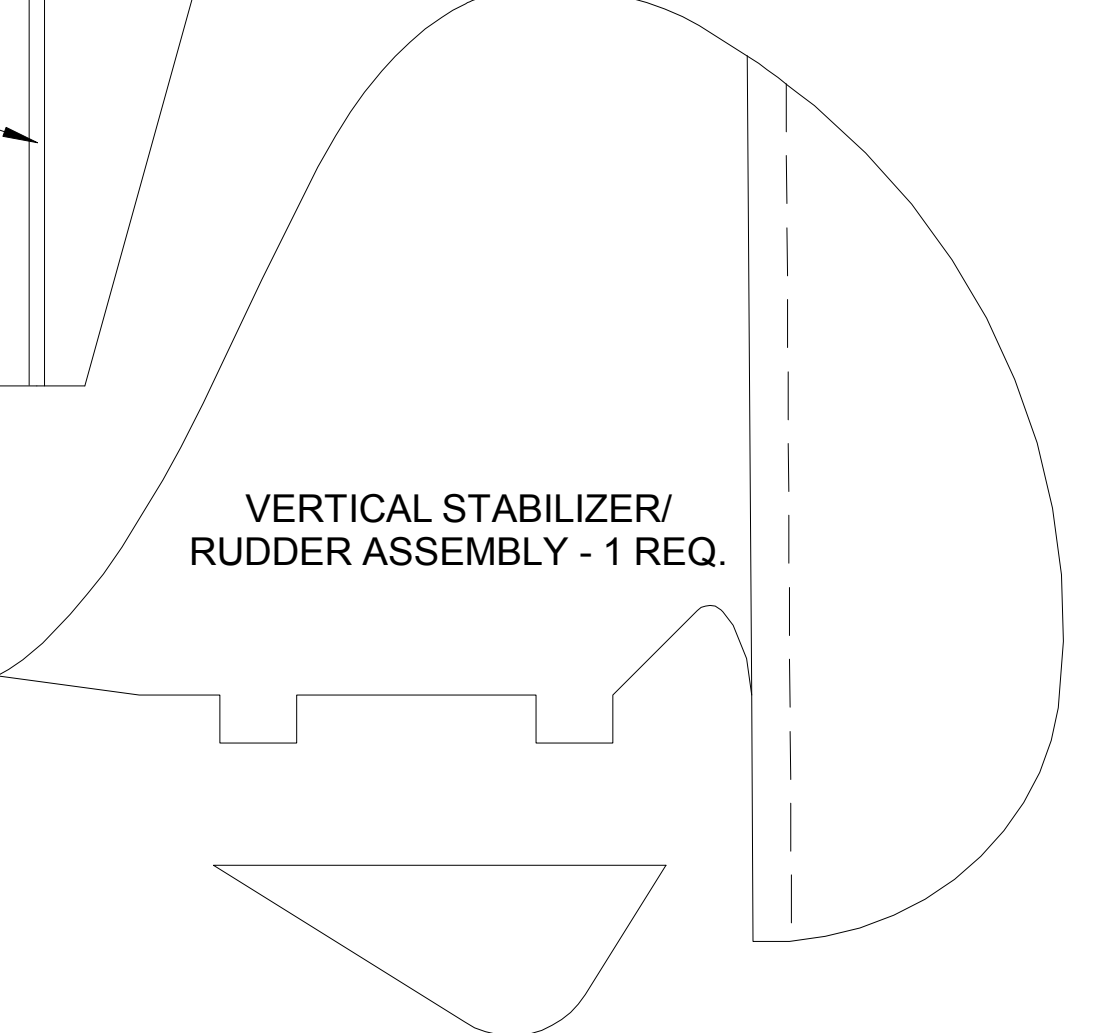
LANDING GEAR WIRE .078" MUSIC WIRE - 1 REQ.



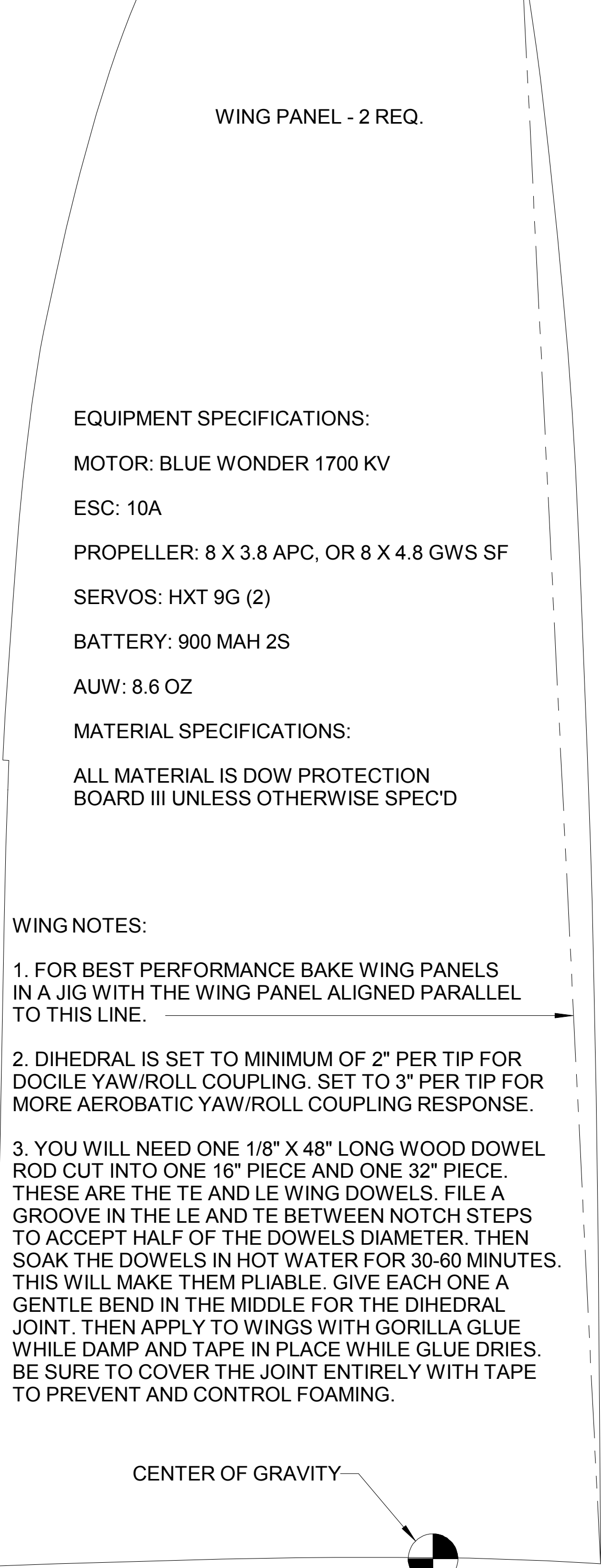
NOTE:  
BIND LANDING GEAR FILLER PLATE TO LANDING GEAR WIRE WITH CARPET OR KEVLAR THREAD WITH VERTICAL AND HORIZONTAL WRAPS. THEN CA.



NOTE: WHEELS USED WERE DUBRO 1.86" PARKFLYERS.



TAIL SKID - 1 REQ.



WING RIB - 2 REQ.

NOTE: WING RIBS ARE INSTALLED AT THE DIHEDRAL JOINT ONLY.

EQUIPMENT SPECIFICATIONS:

MOTOR: BLUE WONDER 1700 KV

ESC: 10A

PROPELLER: 8 X 3.8 APC, OR 8 X 4.8 GWS SF

SERVOS: HXT 9G (2)

BATTERY: 900 MAH 2S

AUW: 8.6 OZ

MATERIAL SPECIFICATIONS:

ALL MATERIAL IS DOW PROTECTION BOARD III UNLESS OTHERWISE SPEC'D

WING NOTES:

1. FOR BEST PERFORMANCE BAKE WING PANELS IN A JIG WITH THE WING PANEL ALIGNED PARALLEL TO THIS LINE.

2. DIHEDRAL IS SET TO MINIMUM OF 2" PER TIP FOR DOCILE YAW/ROLL COUPLING. SET TO 3" PER TIP FOR MORE AEROBATIC YAW/ROLL COUPLING RESPONSE.

3. YOU WILL NEED ONE 1/8" X 48" LONG WOOD DOWEL ROD CUT INTO ONE 16" PIECE AND ONE 32" PIECE. THESE ARE THE TE AND LE WING DOWELS. FILE A GROOVE IN THE LE AND TE BETWEEN NOTCH STEPS TO ACCEPT HALF OF THE DOWELS DIAMETER. THEN SOAK THE DOWELS IN HOT WATER FOR 30-60 MINUTES. THIS WILL MAKE THEM PLIABLE. GIVE EACH ONE A GENTLE BEND IN THE MIDDLE FOR THE DIHEDRAL JOINT. THEN APPLY TO WINGS WITH GORILLA GLUE WHILE DAMP AND TAPE IN PLACE WHILE GLUE DRIES. BE SURE TO COVER THE JOINT ENTIRELY WITH TAPE TO PREVENT AND CONTROL FOAMING.

**Rascal 36**

DESIGNED BY DZ1SFB ON RCGROUPS.COM  
FOR NON COMMERCIAL USE ONLY  
RELEASED 20-FEB-2011