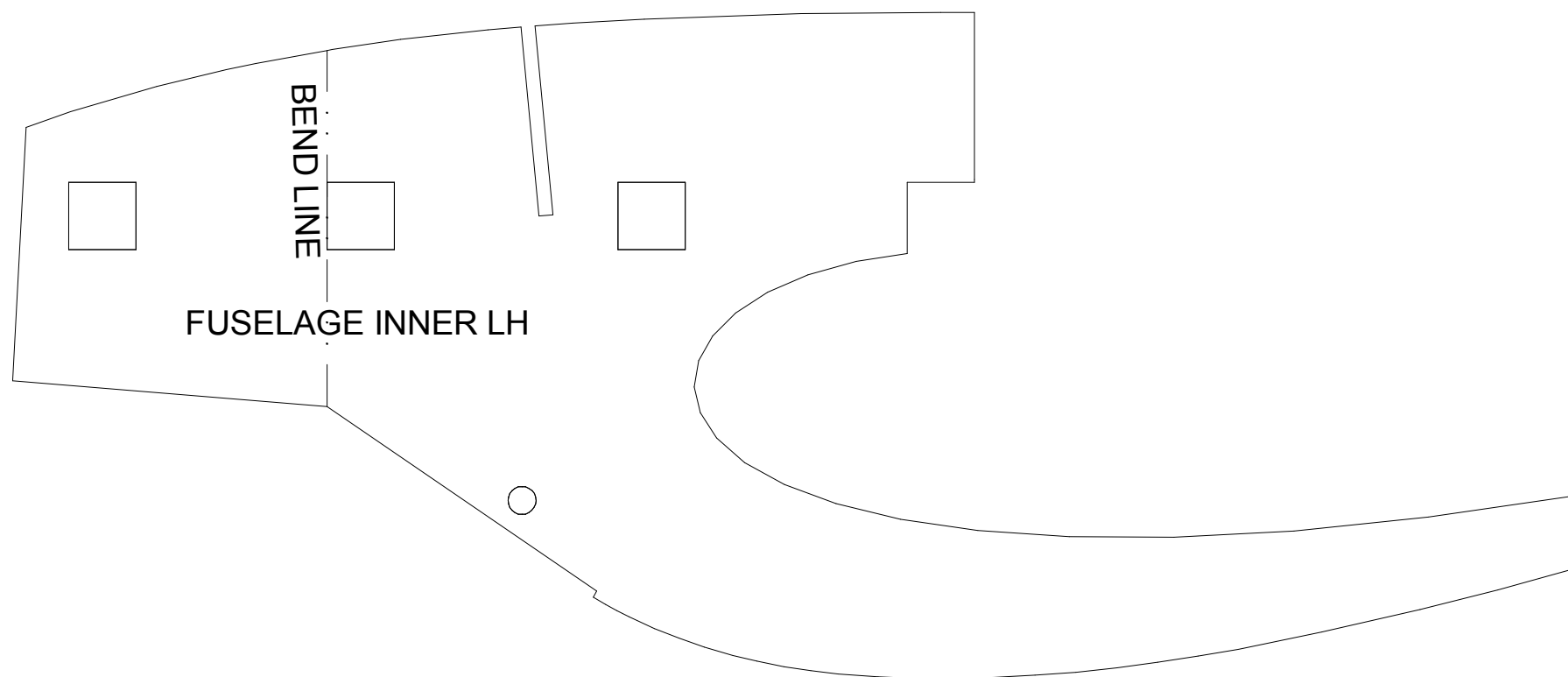
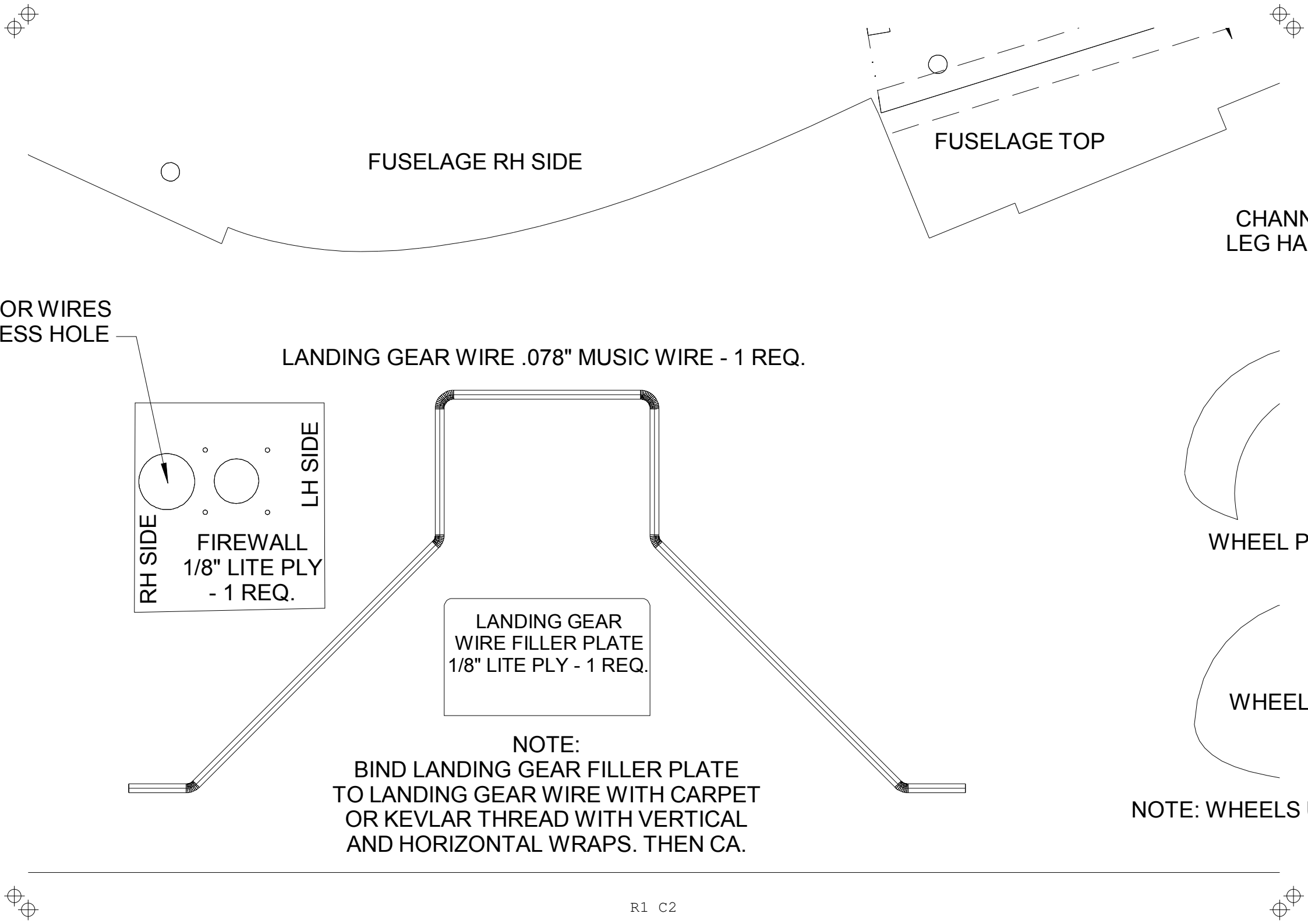


Rascal 36

DESIGNED BY DZ1SFB ON RCGROUPS.COM
FOR NON COMMERCIAL USE ONLY
RELEASED 20-FEB-2011



MOTOR W
ACCESS F



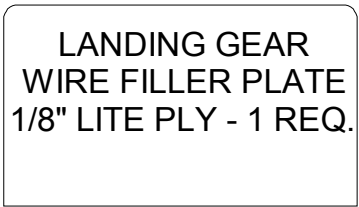
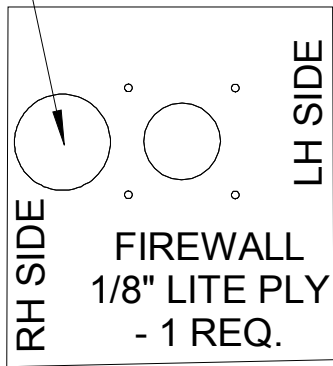
FUSELAGE RH SIDE

FUSELAGE TOP

CHANNEL LEG HA

OR WIRES
ESS HOLE

LANDING GEAR WIRE .078" MUSIC WIRE - 1 REQ.



WHEEL P

WHEEL

NOTE:
BIND LANDING GEAR FILLER PLATE
TO LANDING GEAR WIRE WITH CARPET
OR KEVLAR THREAD WITH VERTICAL
AND HORIZONTAL WRAPS. THEN CA.

NOTE: WHEELS

LANDING GEAR LEG FAIRING - 2 REQ (1 LH & 1 RH).

CHANNEL FOR LANDING GEAR
LEG HALF WAY THROUGH FOAM

HEEL PANT INNER - 4 REQ.

HEEL PANT OUTER - 4 REQ.

HEELS USED WERE DUBRO 1.86" PARKFLYERS.

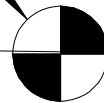
VERTICAL STABILIZER/
RUDDER ASSEMBLY - 1 REQ.

TAIL SKID - 1 REQ.

2. DIHEDRAL IS SET TO MINIMUM OF 2" PER TIP FOR DOCILE YAW/ROLL COUPLING. SET TO 3" PER TIP FOR MORE AEROBATIC YAW/ROLL COUPLING RESPONSE.

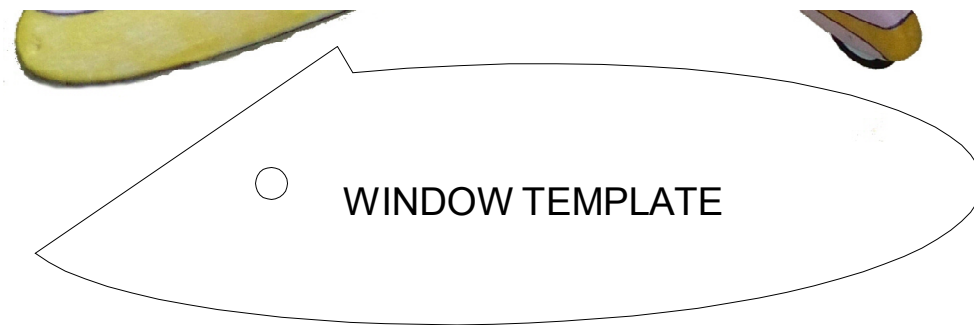
3. YOU WILL NEED ONE 1/8" X 48" LONG WOOD DOWEL ROD CUT INTO ONE 16" PIECE AND ONE 32" PIECE. THESE ARE THE TE AND LE WING DOWELS. FILE A GROOVE IN THE LE AND TE BETWEEN NOTCH STEPS TO ACCEPT HALF OF THE DOWELS DIAMETER. THEN SOAK THE DOWELS IN HOT WATER FOR 30-60 MINUTES. THIS WILL MAKE THEM PLIABLE. GIVE EACH ONE A GENTLE BEND IN THE MIDDLE FOR THE DIHEDRAL JOINT. THEN APPLY TO WINGS WITH GORILLA GLUE WHILE DAMP AND TAPE IN PLACE WHILE GLUE DRIES. BE SURE TO COVER THE JOINT ENTIRELY WITH TAPE TO PREVENT AND CONTROL FOAMING.

CENTER OF GRAVITY

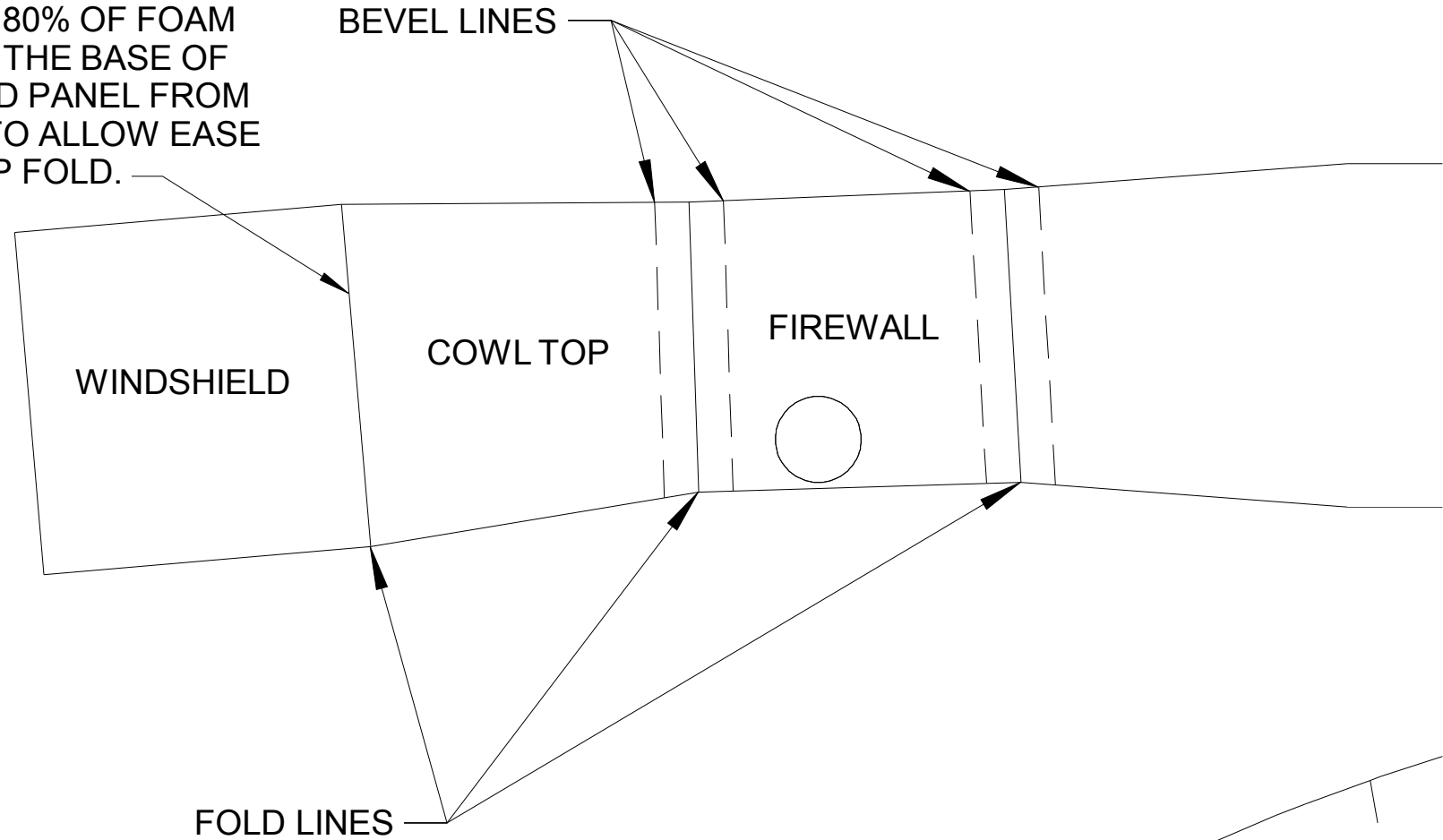


WING RIB - 2 REQ.

NOTE: WING RIBS ARE INSTALLED AT THE DIHEDRAL JOINT ONLY.

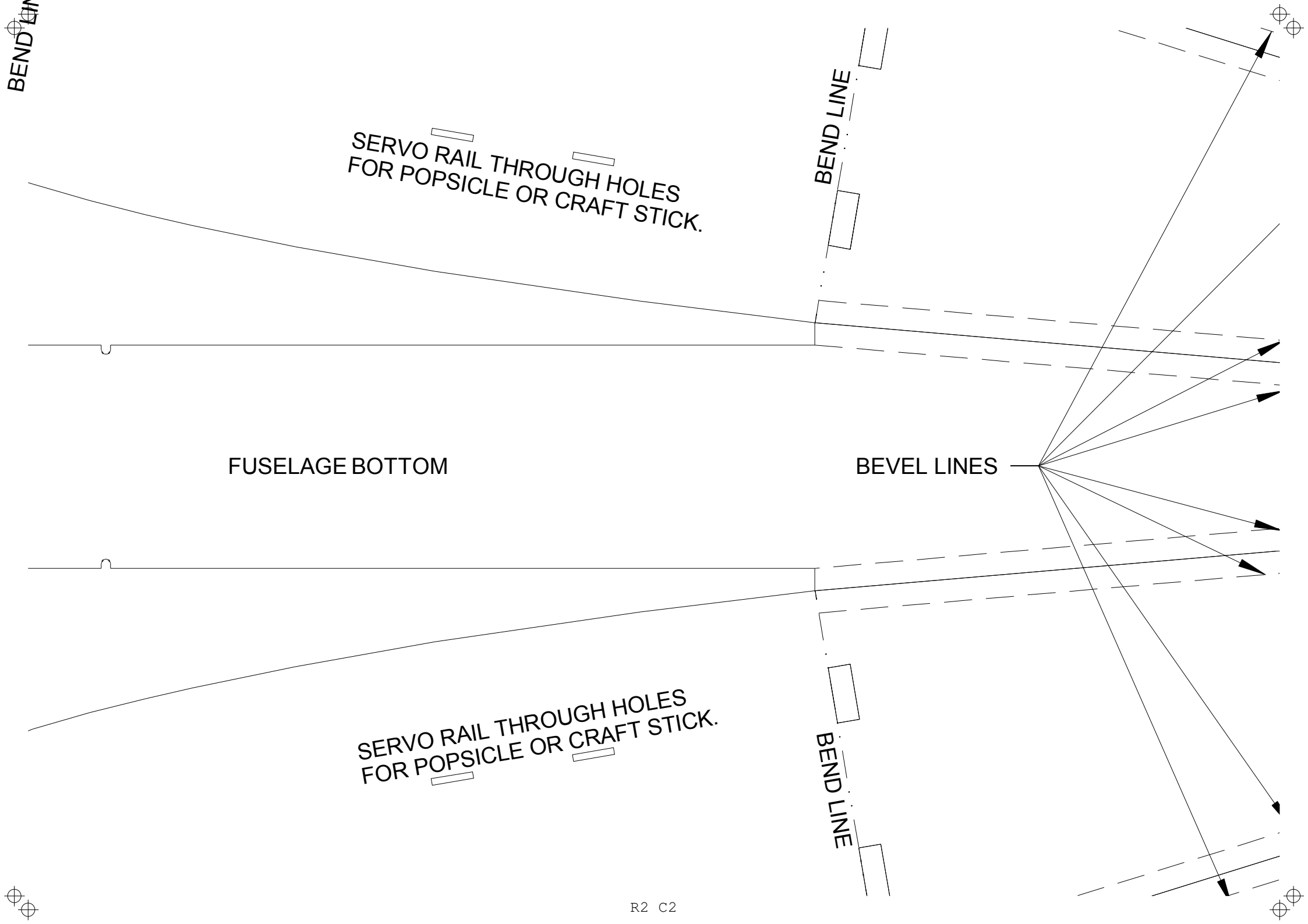


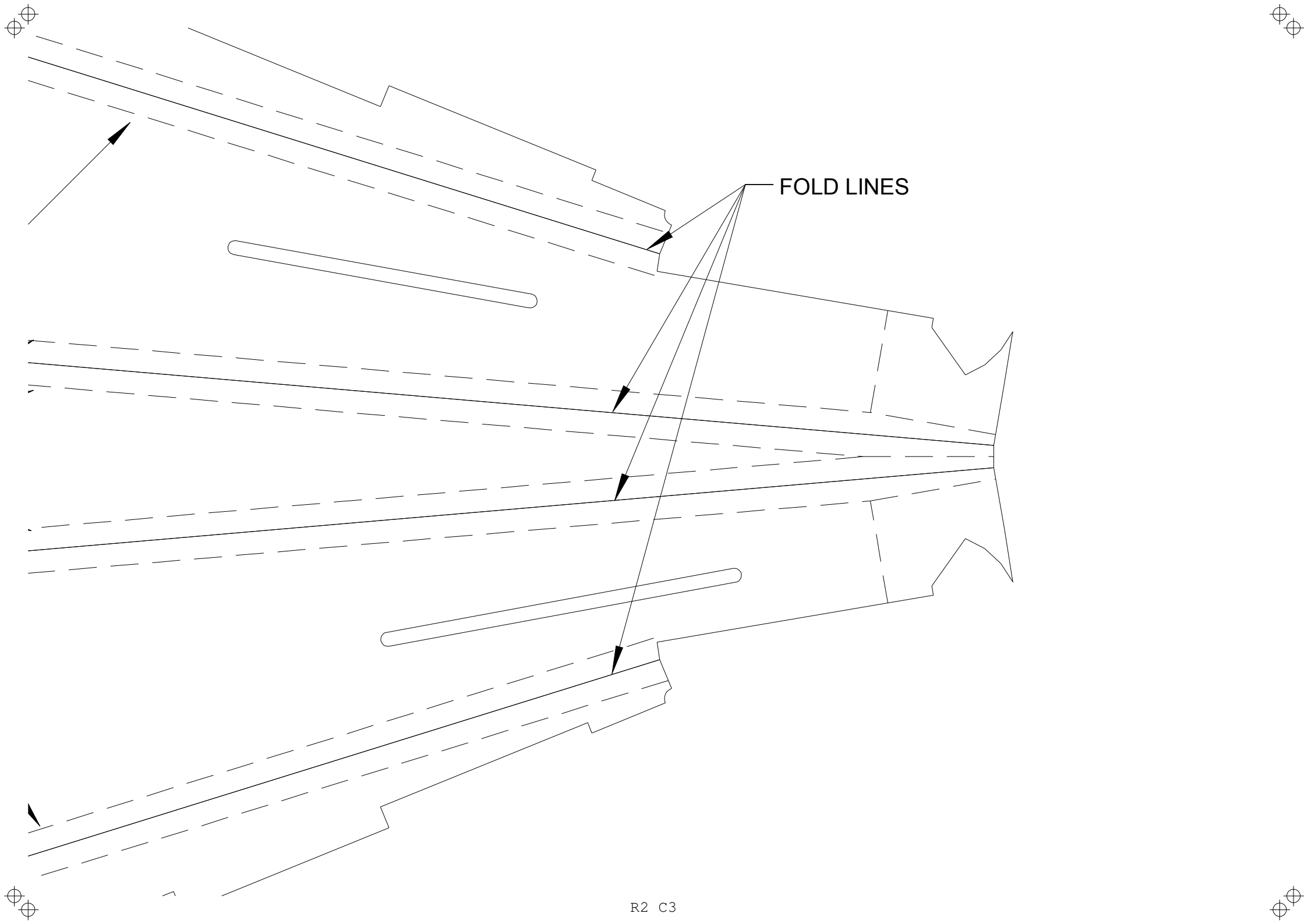
NOTE:
CUT THROUGH 80% OF FOAM
THICKNESS AT THE BASE OF
THE WINDSHIELD PANEL FROM
THE BACK SIDE TO ALLOW EASE
OF AN UP FOLD.



BEND LINE

BEND LINE





FOLD LINES

R2 C3

EQUIPMENT SPECIFICATIONS:

MOTOR: BLUE WONDER 1700 KV

ESC: 10A

PROPELLER: 8 X 3.8 APC, OR 8 X 4.8 GWS SF

SERVOS: HXT 9G (2)


BATTERY: 900 MAH 2S

AUW: 8.6 OZ

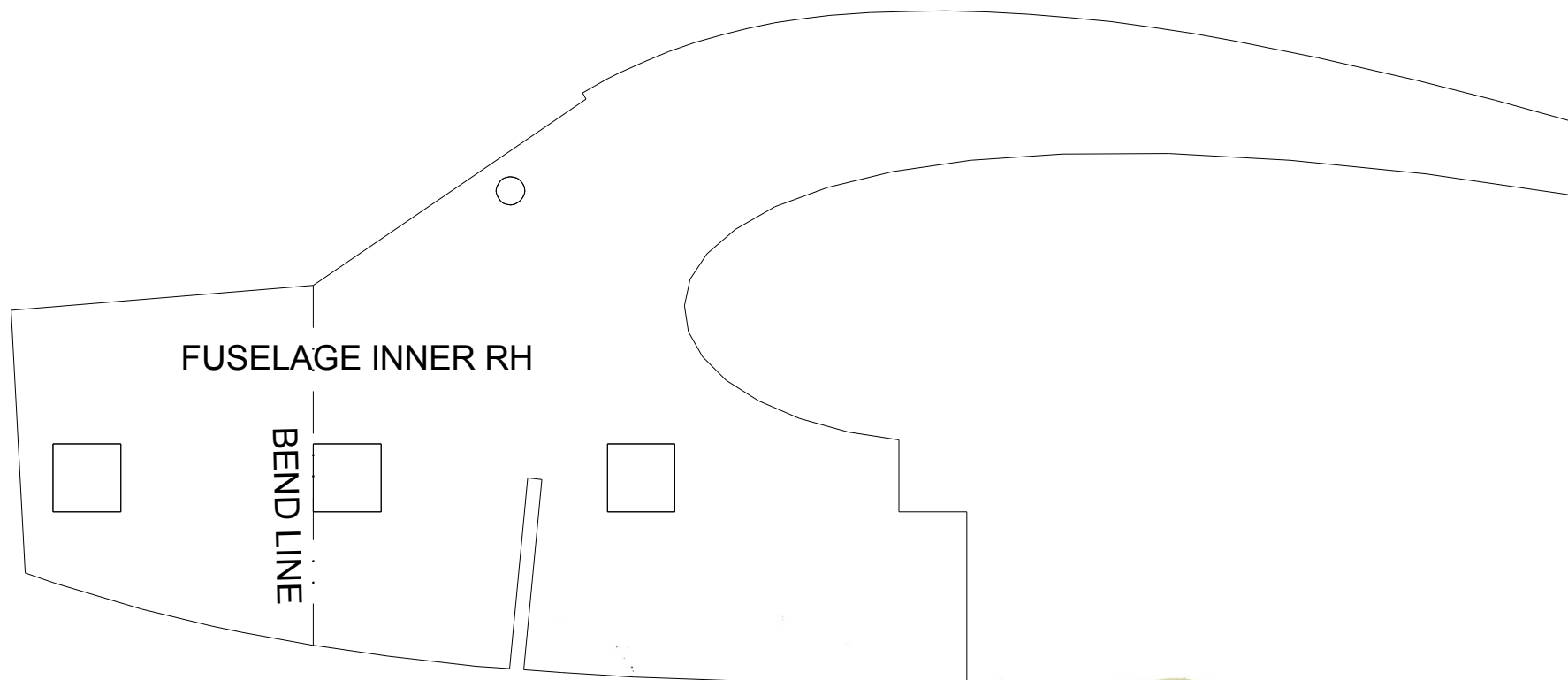
MATERIAL SPECIFICATIONS:

ALL MATERIAL IS DOW PROTECTION
BOARD III UNLESS OTHERWISE SPEC'D

WING NOTES:

1. FOR BEST PERFORMANCE BAKE WING PANELS
IN A JIG WITH THE WING PANEL ALIGNED PARALLEL
TO THIS LINE. 

2. DIHEDRAL IS SET TO MINIMUM OF 2" PER TIP FOR
DOCILE YAW/ROLL COUPLING. SET TO 3" PER TIP FOR



R3 C1

BEND LINE

RH SIDE

BATTERY TRAY UPPER - 1 REQ.

LH SIDE

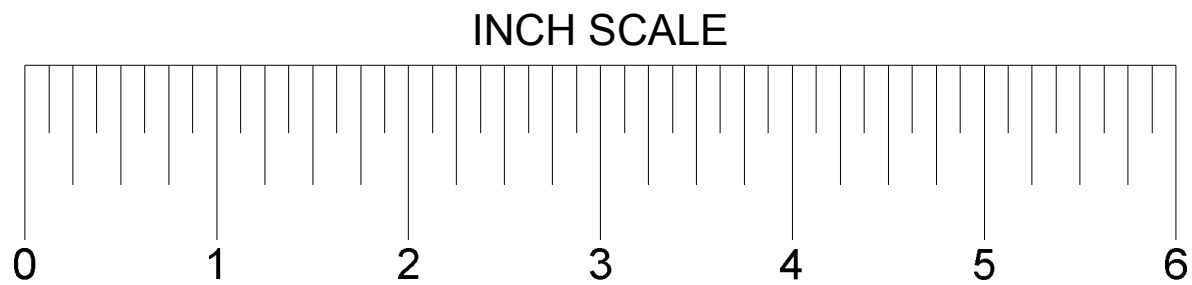
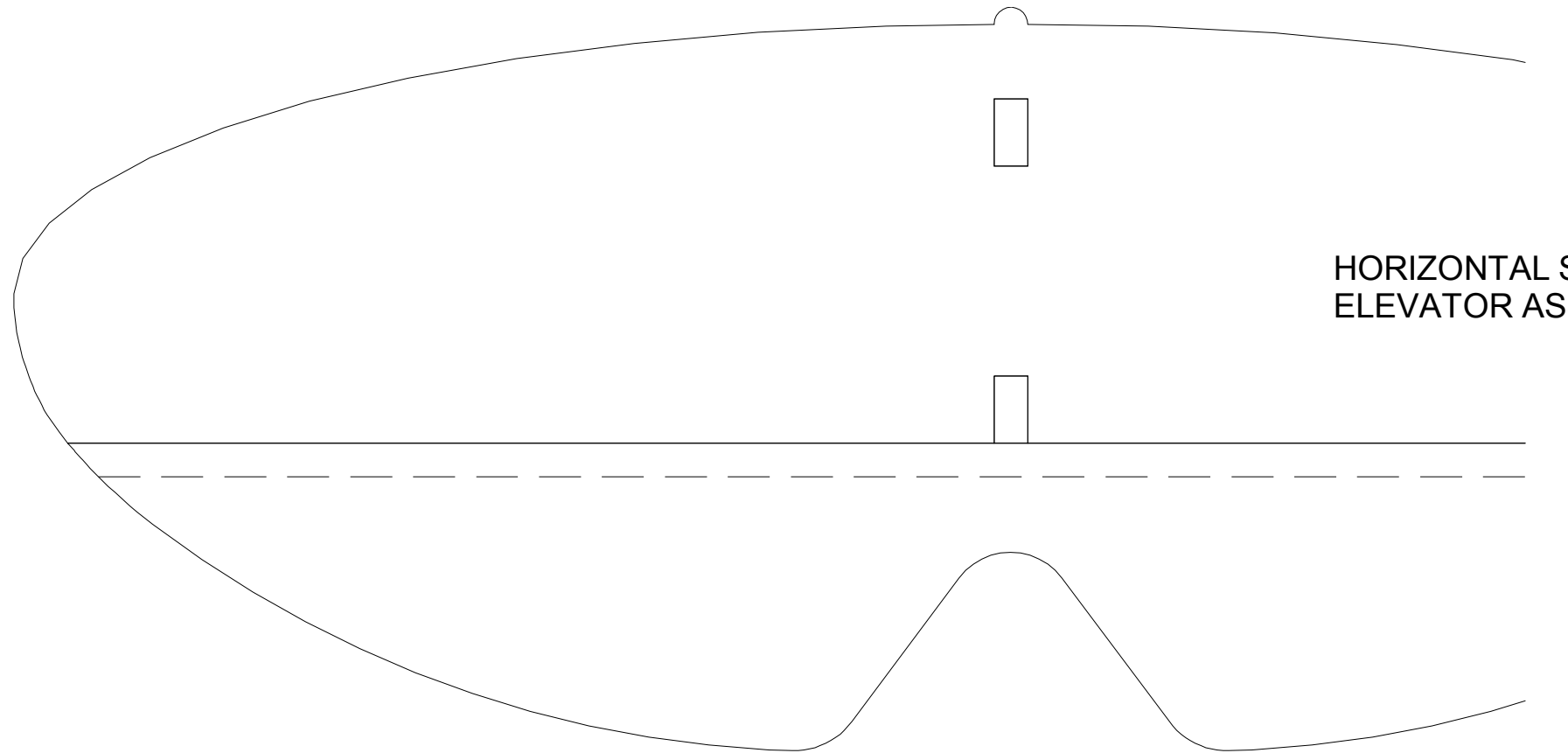
BATTERY TRAY
DOUBLER FRONT
- 1 REQ.

BATTERY TRAY
DOUBLER REAR
- 1 REQ.

BULKHEAD

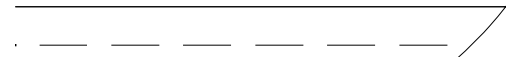
FUSELAGE LH SIDE

FUSELAGE TOP





ITAL STABILIZER AND
OR ASSEMBLY - 1 REQ.



WING PANEL - 2 REQ.







R4 C2

FOR FURTHER
<http://www.fox.com>



FOR FURTHER DOCUMENTATION ON THE BUILD PROCESS VISIT
www.rcgroups.com/forums/showpost.php?p=16877826&postcount=115





R4 C4