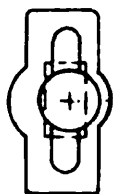


PLAN - FULL SIZE

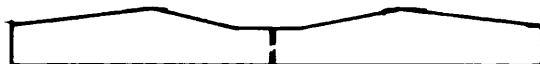
NOTES:

1. ALL MAT'L $\frac{1}{32}$ ND SHEET BALSA UNLESS OTHERWISE NOTED
2. GRAIN DIRECTION 

NOSE BLOCK
 $\frac{3}{16} \times \frac{5}{8} \times 1$



CUT DOWN FROM $\frac{3}{8} \times \frac{1}{2} \times 2\frac{3}{4}$ BLOCK



FLYING PROPELLER

SCALE SIZE
TAIL

TOP VIEW

2
PCS.
LAMINATED



LANDING
GEAR
 $\frac{1}{64}$ DIA. WIRE

FLYING AIRFOIL

SCALE AIRFOIL

SIDE VIEW

$\frac{1}{2}$ DIA.
WHEELS

WITTMAN 2 PLACE MODEL W-8
"TAILWIND" BY WALT MOONEY
9-30-61