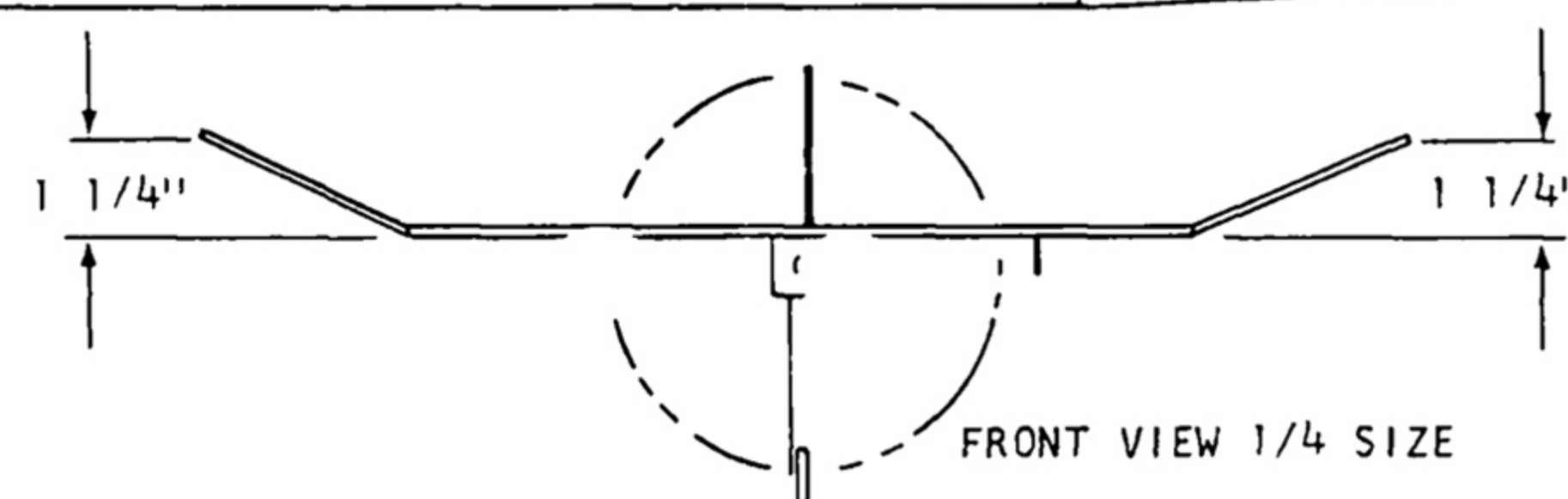


NOSE BLOCK DETAIL

GLUE N1, N2, N3, N4 & N5 TOGETHER CROSSING THE GRAIN DIRECTION. AFTER GLUE IS DRY DRILL 1/8" DIA HOLE IN CENTER. DO NOT GLUE NOSE BLOCK TO FUSELAGE, MUST BE REMOVEABLE FOR WINDING RUBBER MOTOR.



ADJUST MODEL FOR BEST GLIDE BY MOVING WING FORWARD OR BACK BALANCE APPROX AT CENTER SPAR

1/16 DIA WOOD DOWEL TO RETAIN RUBBER MOTOR.

RUDDER

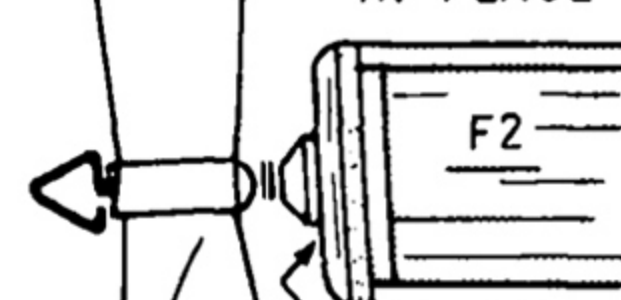
1/16 SQ.

GUSSETS

STABILIZER

GLUE NYLON BEARING IN PLACE

GLUE 1/16 X 1/8 UNDER LEADING EDGE OF WING



SEE NOSE BLOCK DETAIL

BEND FROM .025 MUSIC WIRE SINGLE 3/4 INCH DIA WHEEL

REMOVE TISSUE ON BOTTOM OF FUSELAGE THIS SECTION FOR INSTALLING RUBBER MOTOR

GLUE SUB RUDDERS TO EACH TIP OF STABILIZER. COAT FRONT EDGE OF SUB RUDDERS WITH GLUE

POWER: ONE 12" LOOP OF 1/8" CONTEST RUBBER

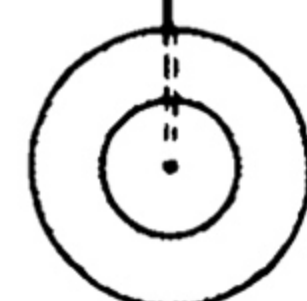
STABILIZER

1/16 SQ.

GUSSETS

1/16

BALANCE PROP BY SANDING DOWN THICKNESS OF HEAVIER BLADE



One Nite 16

STABLE HIGH PERFORMANCE RUBBER POWERED MODEL
16 INCH WING SPAN By Bob Peck