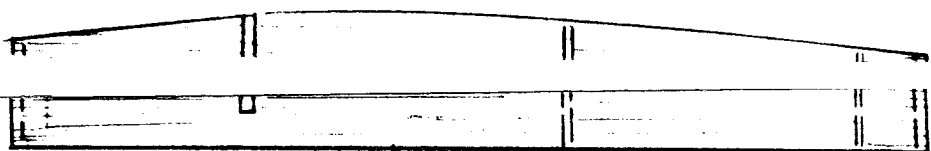
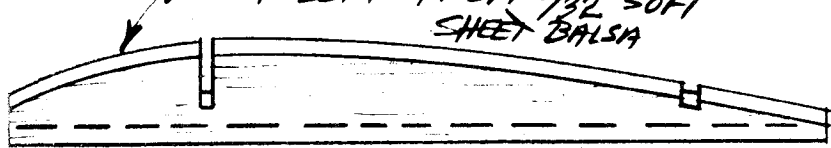


PILOT

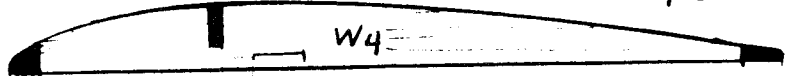
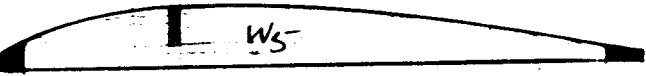
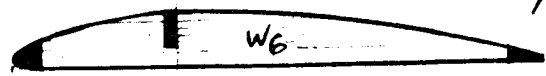
**R-1 "CHAMBERMAID"**  
BY RUSSELL CHAMBERS MAY-SEP '38  
DRAWN BY: R. PRESTON BRUNING APR '72  
REF: DRAWINGS BY R. S. HIRSCH  
8X10 GLOSSY PHOTOS BY STEVE HUDER  
14925 KILBOURNE, DETROIT, MICH 48219

0 1' 2' 3' 4' 5'  
SCALE IN FEET:

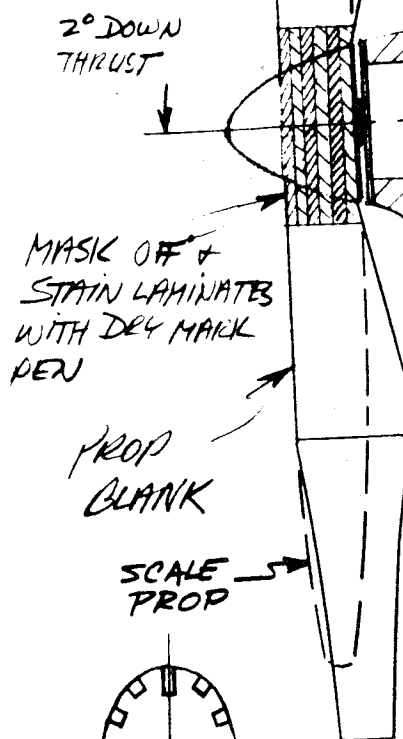
\* NOTE: COLOR SCHEME - CREAM YELLOW  
W/BLACK LETTERING & TRIM  
W3 ROOT RIB MAKE RIGHT  
& LEFT FROM 3/32" SOFT  
SHEET BALSA



BUTT PLATE FOR ROOT RIB W3  
1/32" SHEET BALSA (SOFT)

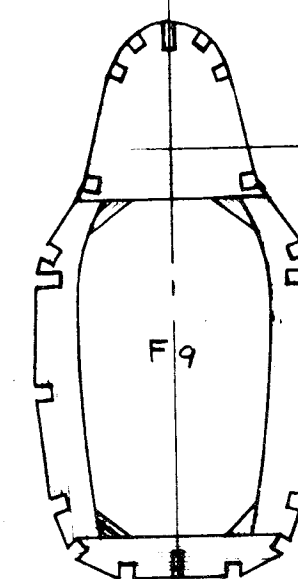


BLACK  
NUMBER 2

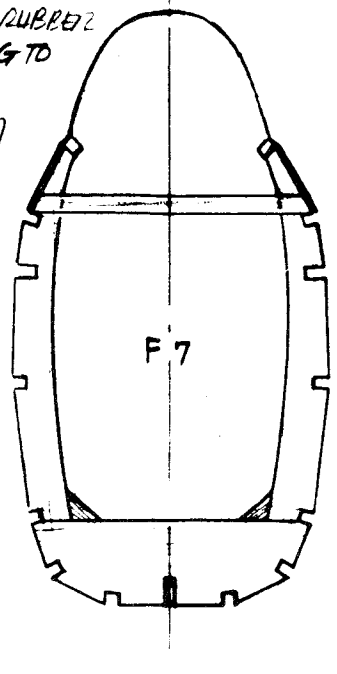
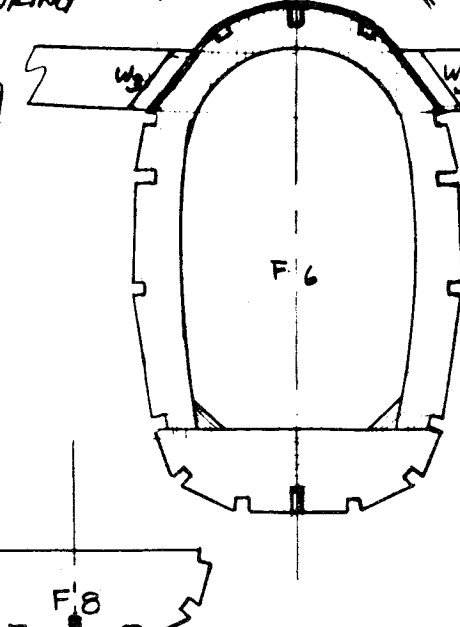
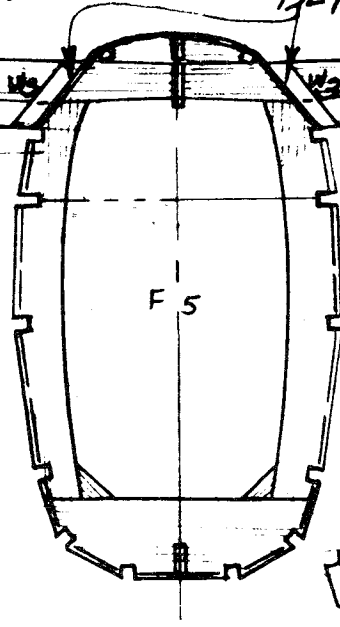
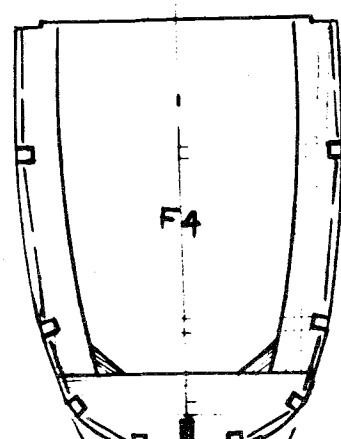
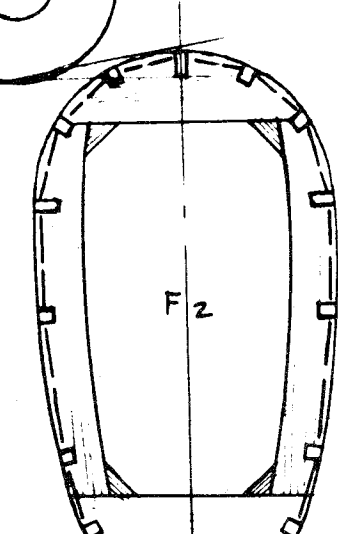
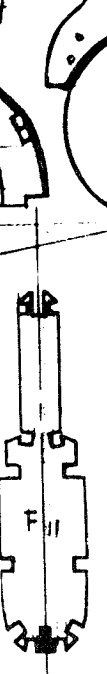
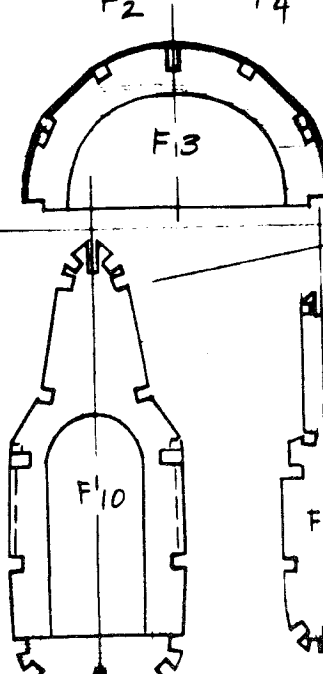
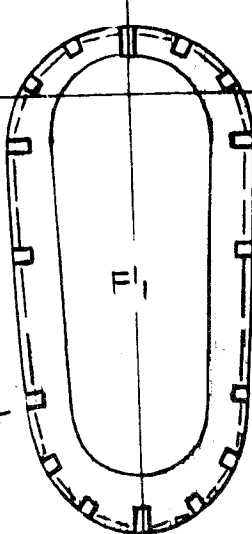


MASK OFF &  
STAIN LAMINATES  
WITH DEK MARK  
PEN

PROP  
BLANK  
SCALE  
PROP

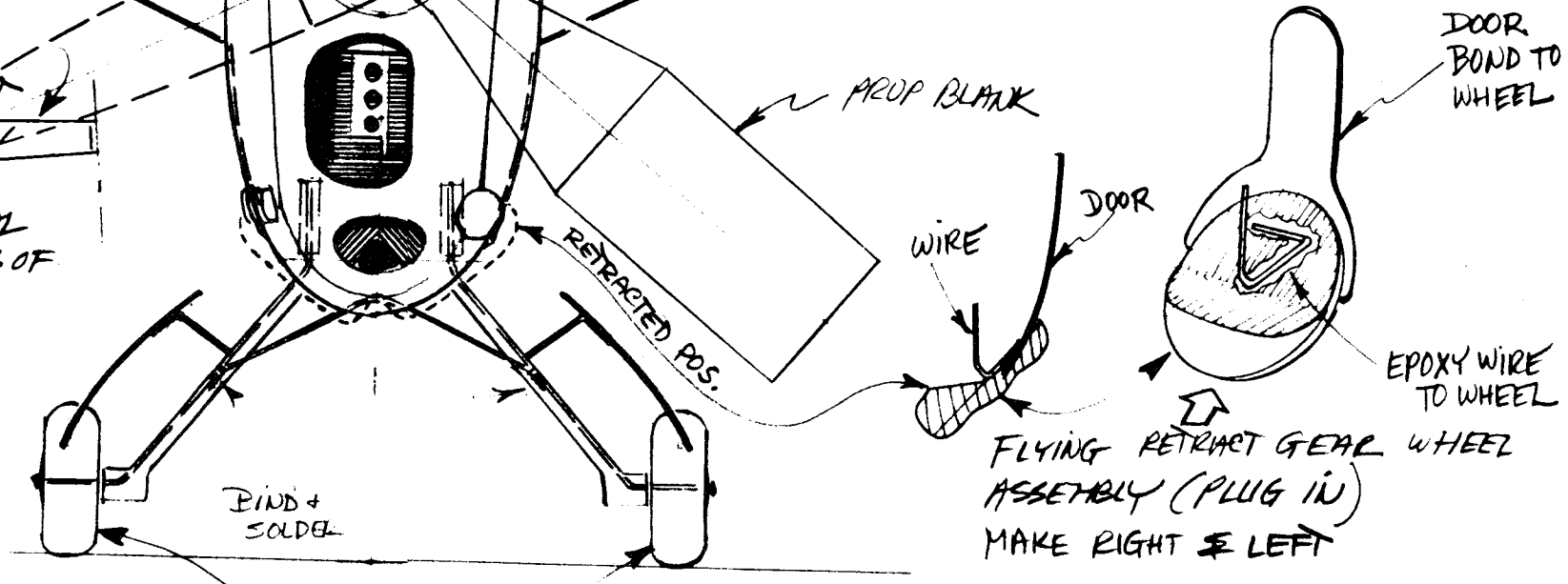


TAIL CONE



MAIN SPAR 1/16" MEDIUM HARD BALSA SHEET

HORIZONTAL  
LAMINATES OF  
1/16"

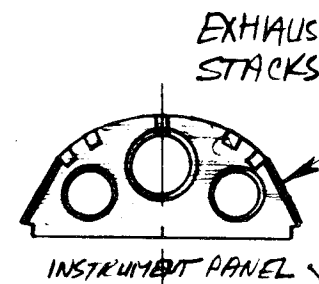


BIND &  
SOLDER

REMOVABLE GEAR  
FOR STATIC JUDGING  
ONLY

WINDOW (TOP & BOTTOM)  
(RIGHT WING ONLY)

LOWER FUSELAGE  
STRINGERS



EXHAUST  
STACKS

NOSE BLOCK

1/32 x 3/16  
SAND TO  
SHAPE  
AFTER  
ELEVATOR  
IS BUILT

1/32 x 1/4  
SAND TO  
SHAPE  
AFTER  
FIN-FLUTTER  
IS BUILT

BLACK  
TRIM

SCALE

PLYWOOD  
1/32"

1/32" PLATED

BIND &  
EPOXY/RUBBER  
TUBING TO  
F12

BLACK  
NUMBER

HOLLOWED  
(CUT SOFT  
BLOCK)

FILE CARD DOOR

TISSUE STRIPS  
DOPED ON OUTSIDE

1/32 PLANKING