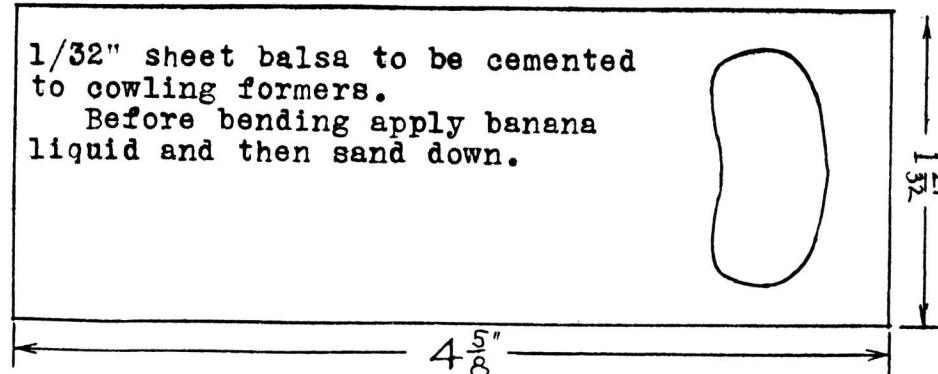
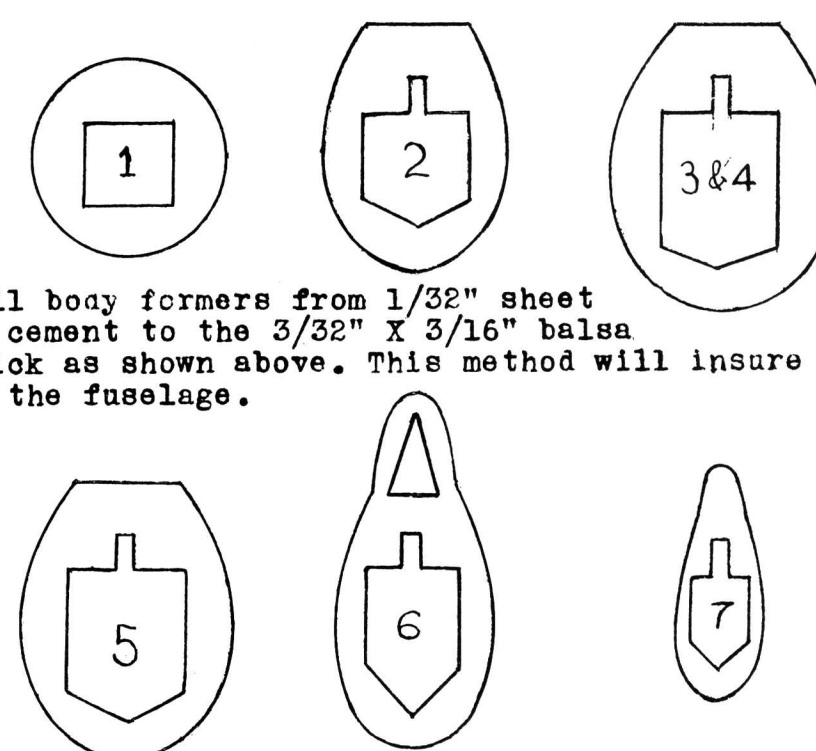


1/32" sheet balsa to be cemented to cowlings formers.
Before bending apply banana liquid and then sand down.



BODY FORMERS

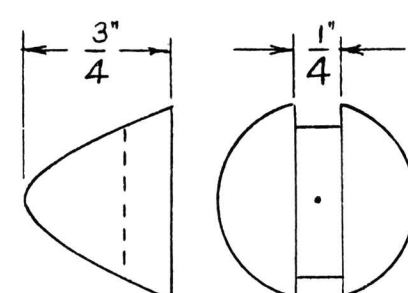
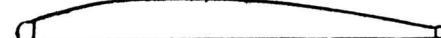


Cut all body formers from 1/32" sheet balsa and cement to the 3/32" X 3/16" balsa center stick as shown above. This method will insure per lineup of the fuselage.

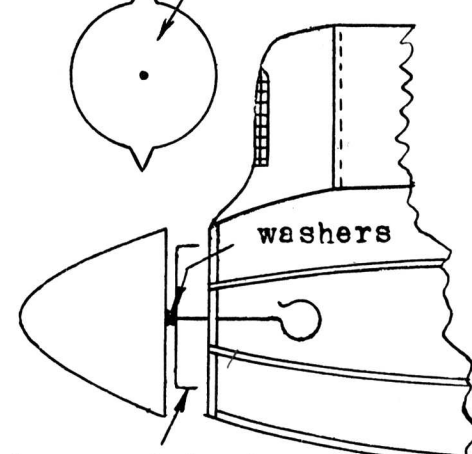
MATERIALS REQUIRED

Tube cement
Aluminum
Banana liquid
Washers
2 ft. 1/32" X 1/8" rubber
1 1/2" X 3/4" X 6" balsa prop. block
6 pieces shredded bamboo
1 balsa block 1" X 1" X 1"
1 balsa block 5/8" X 3/4" X 1"
2 prop. shafts
1 piece #10 music wire
1 sheet Jap. tissue paper
1 sheet balsa 1/32" X 2" X 24"
6 strips balsa 1/16" sq. X 24"
1 pr. 1-3/16" celluloid wheels
1 strip balsa 3/32" X 3/16" X 24"

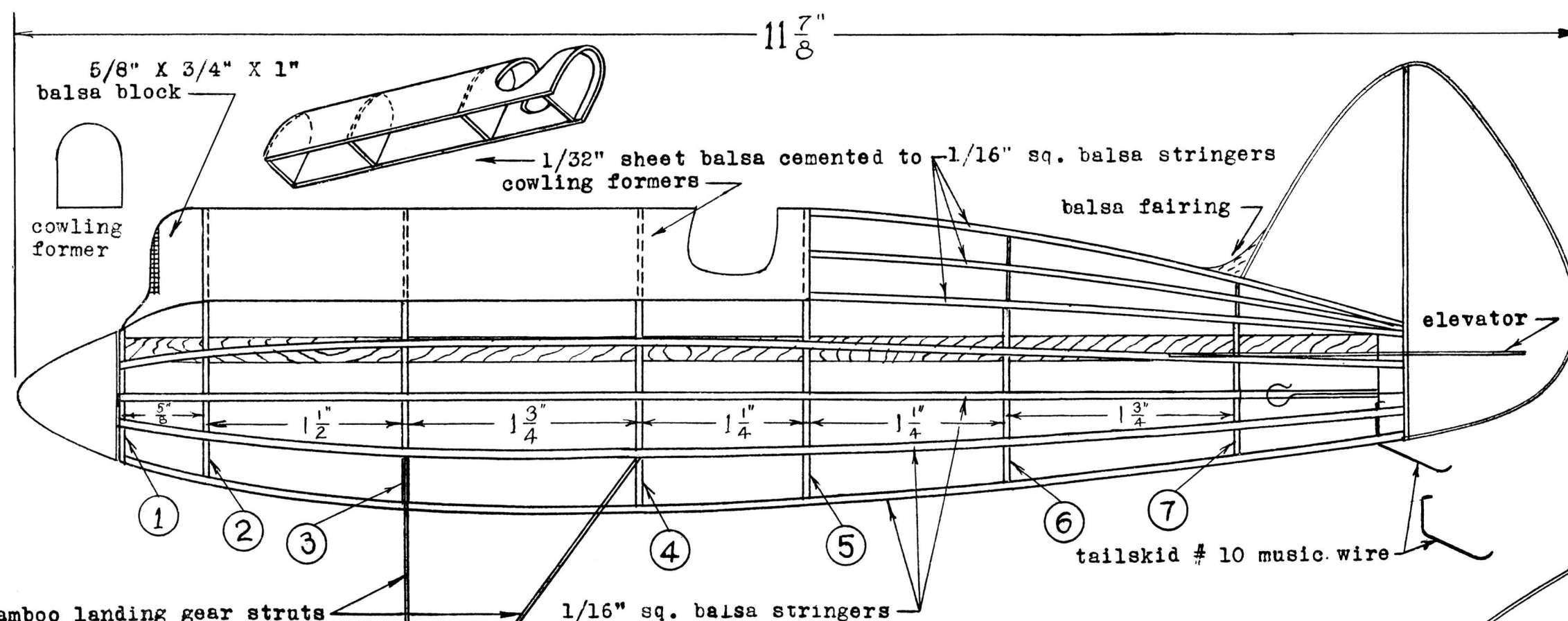
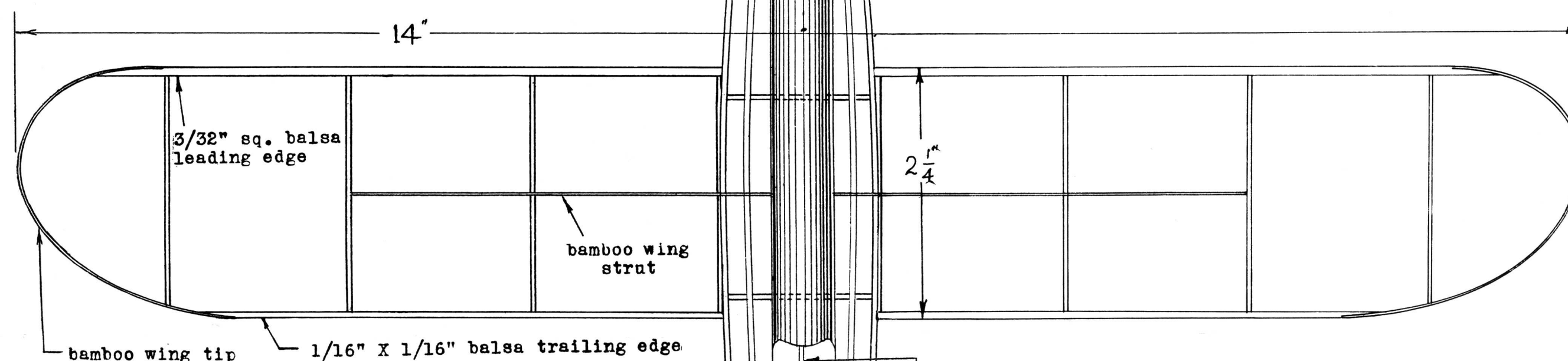
wing rib-8 required



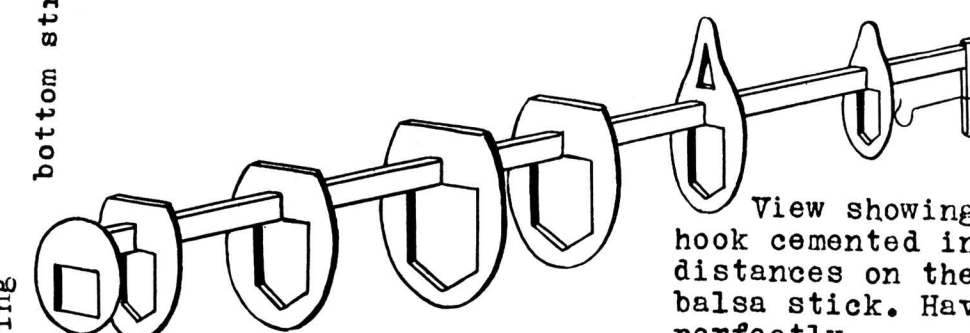
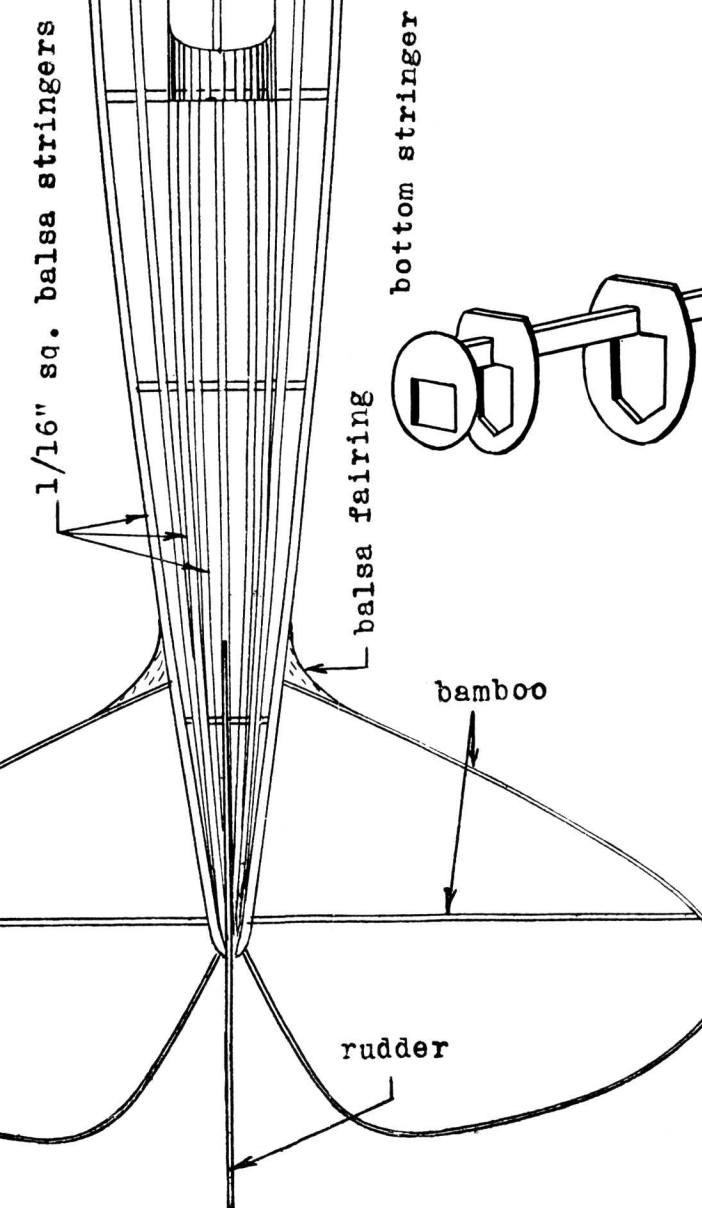
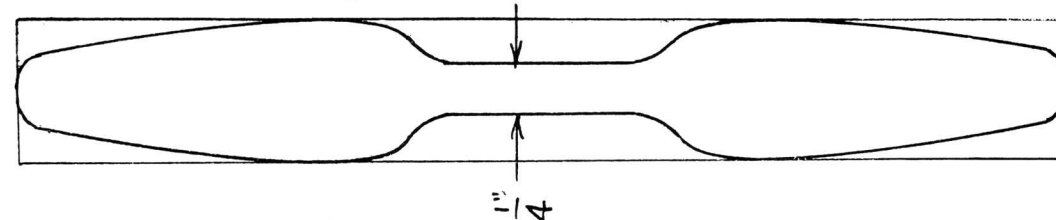
cut from thin sheet aluminum & bend ears up



push ears into former



Cut a 1/2" X 3/4" X 6" balsa prop block to this shape and carve as usual but leave the center portion 1/4" sq.



View showing all body formers and rear hook cemented in position. Measure off the distances on the 3/32" X 3/16" X 9-1/2" balsa stick. Have all formers lined up perfectly.

HOWARD RACER

