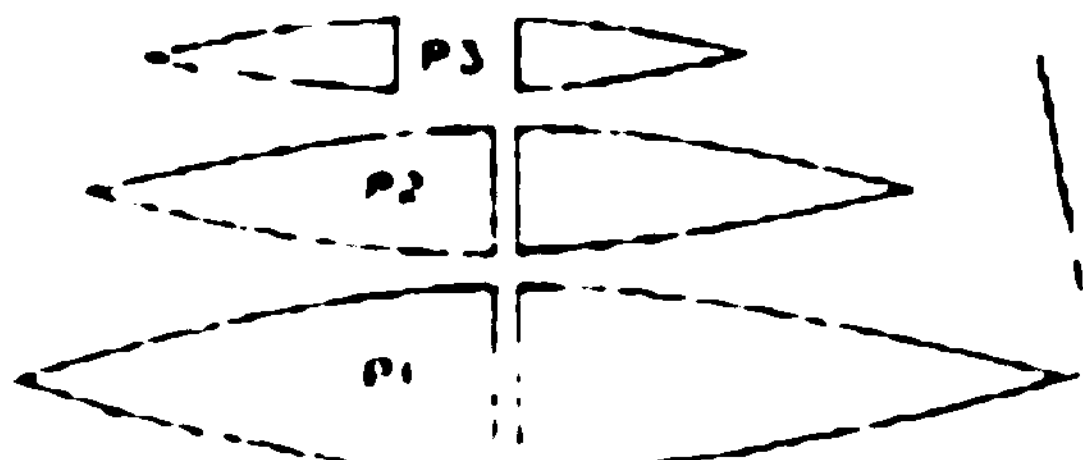


ROTOR SETTINGS  
PYLON ANGLE OF ATTACK +5°  
BLADE INCIDENCE -2°  
ROTOR TILT 5° RIGHT  
ROTATION IS CLOCKWISE

ARTICULATION  
MIN RISE IS 5°



3/32 WIRE  
GEAR LEGS

ALL FORMERS 1/8 Balsa

TOP & BOTTOM COVERING IS 3/32  
WET SHEET ONE SIDE TO FORM

ALL CORNERS 3/16 x 1/4

1/16 WIRE PUSH RODS

1/16 WIRE

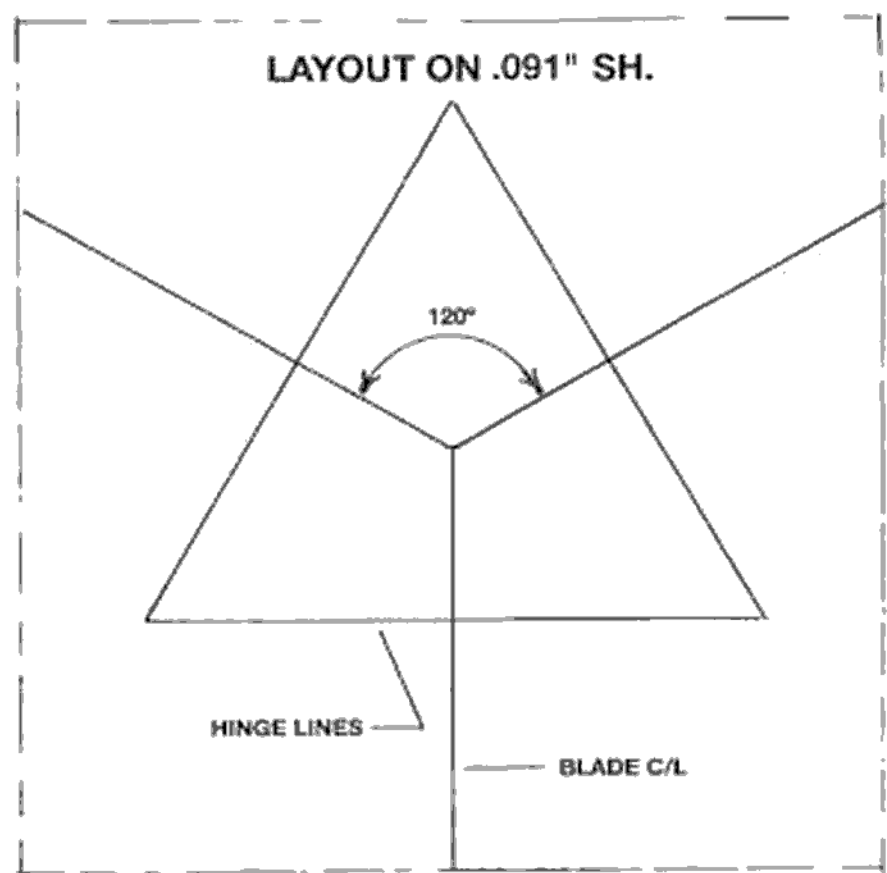
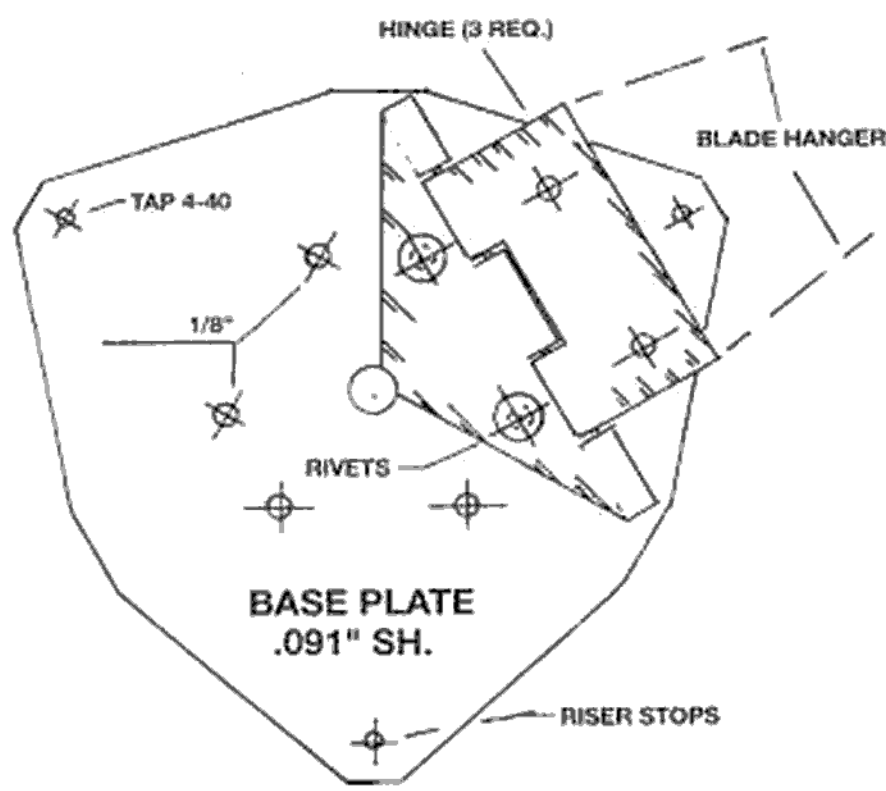
REQUIRED REFERENCES  
ROTOR HEAD - RCM 12/87  
BLADE HANGER - RCM 7/98  
ROTOR BLADES - RCM 2/98

SPECIFICATIONS  
ROTOR SPAN 50"  
DISC AREA 1863"  
WGHT. 43/4 LBS  
ENG. SPORT 40  
CONTROL RUDD  
ELY. ENG AND  
TILT ROTOR

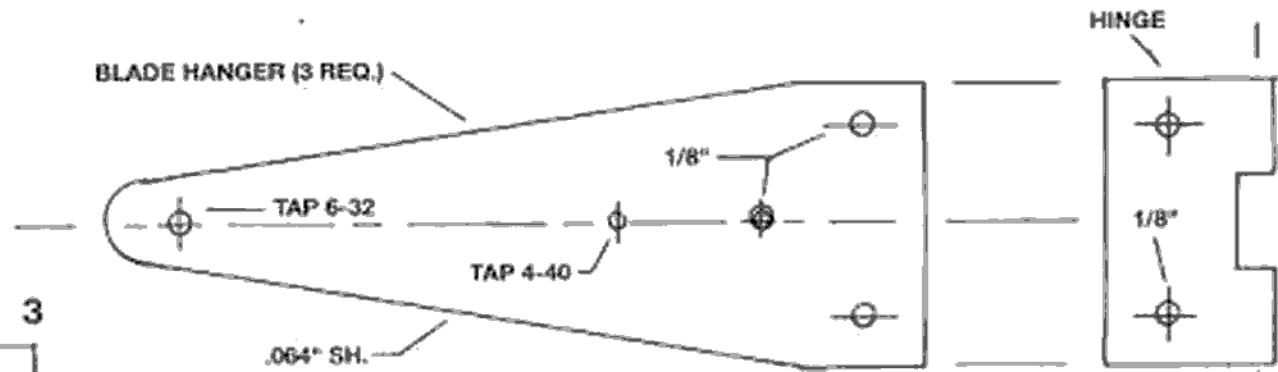
**GIROV**  
A PRACTICAL SPORT AUTOGIRO  
DESIGNED & DEVELOPED BY [Signature] 6/98



Rotary blade hanger details and drawing.



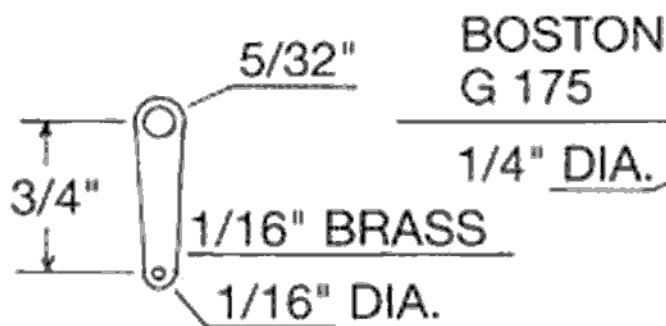
MATERIAL  
.091" & .064" 2024 T3 ALUM. ALL. SHEET  
1" AIRCRAFT PIANO HINGE  
1/8" ALUM. RIVETS



12 T



BOSTON  
G 163

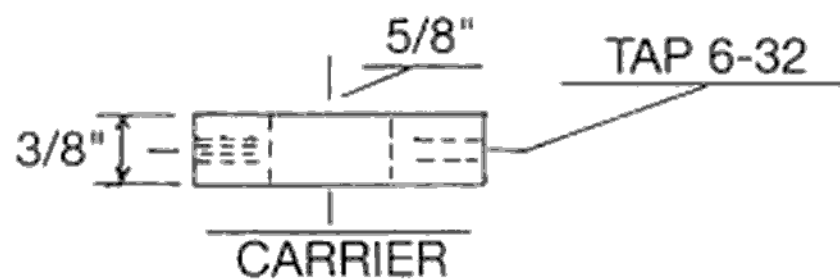
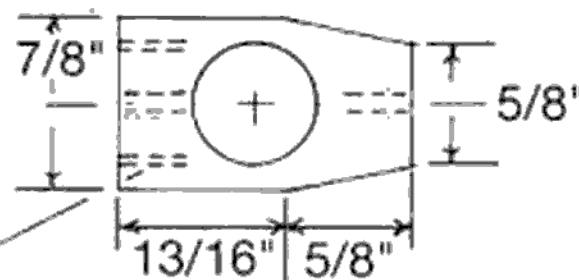


MATERIAL - 2024 T3 ALUM. ALL.  
BOSTON GEARS - G 163 & G175

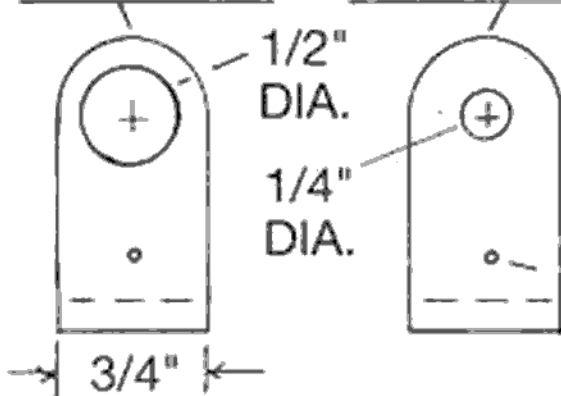
CUT TO  
SHAPE  
32T



TOP VIEW



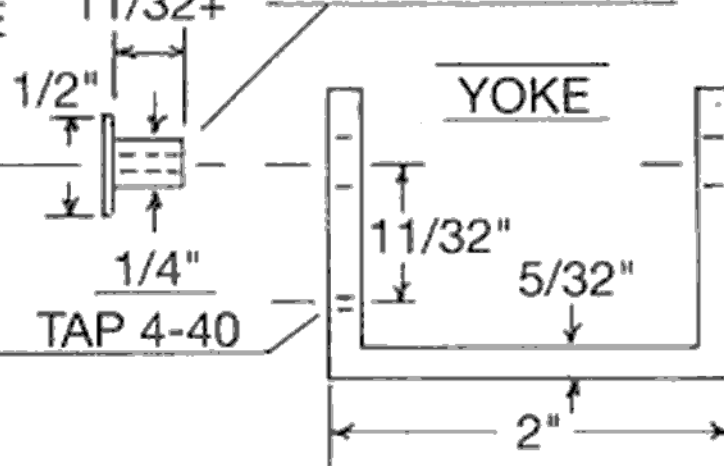
BALL  
BEARRING OR BUSHING TYPE



END VIEW



BRONZE BUSH.



SIDE VIEW

Rotor heads detail and drawing.

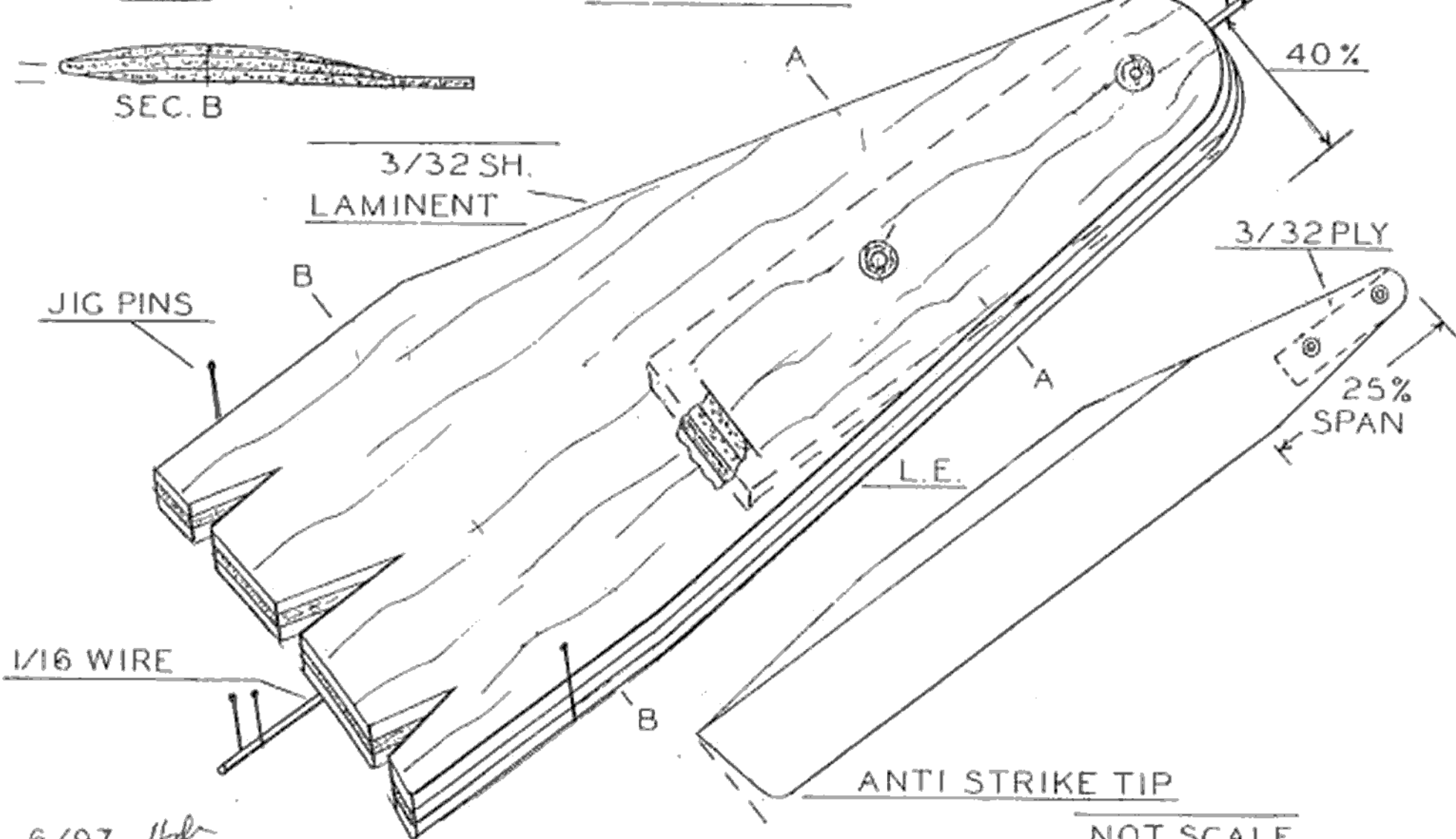
SEC. A



SEC. B



TYPICAL ROTOR BLADE  
SPAN-50"  
CHORD-3"



6/97 Hdr