

1° RIGHT THRUST

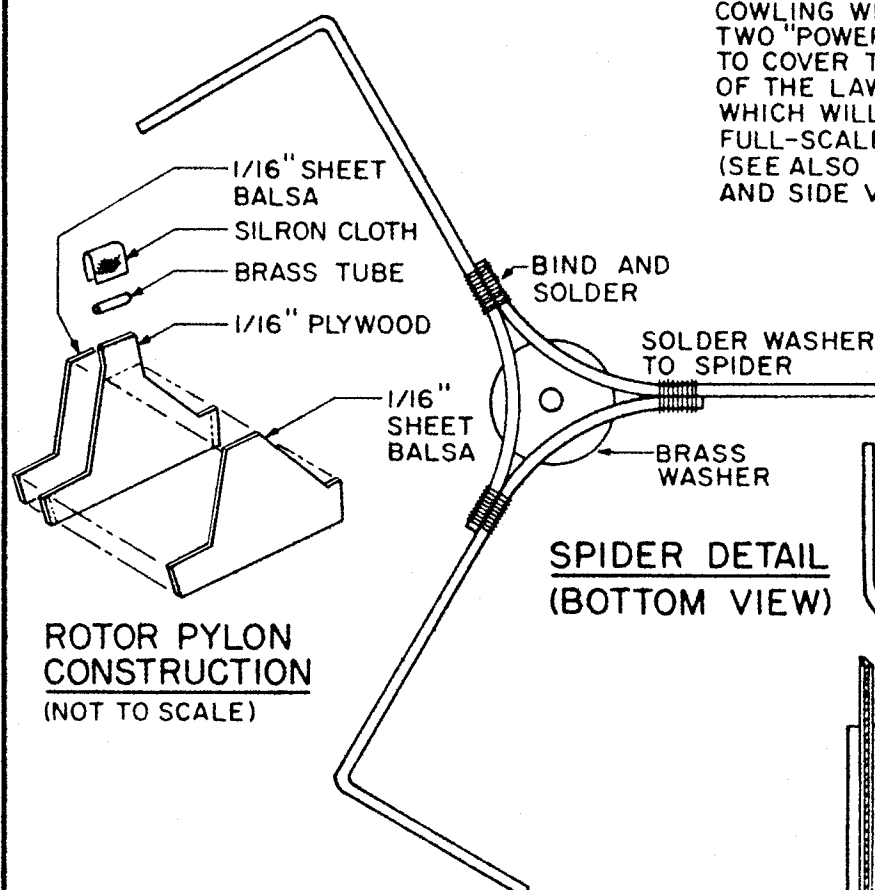
NOTE:
ALL COWLING
INFORMATION IS
PROVISIONAL, AS
THE FULL-SCALE
PROTOTYPE IS STILL
UNDER DEVELOPMENT.
THE MODEL IS PRESENTLY
FLYING SANS COWLING.

NOTE:
COWLING WILL HAVE
TWO "POWER-BULGES"
TO COVER THE MAGNETOS
OF THE LAWRENCE ENGINE
WHICH WILL POWER THE
FULL-SCALE PROTOTYPE.
(SEE ALSO FRONT,
AND SIDE VIEWS)

1/8" SQUARE
COCKPIT SIDE
STIFFENER
(BOTH SIDES)

NOTE: WEIGHT OF
FINISHED MODEL
SHOULD BE
APPROXIMATELY
8 TO 9 OZS.
(WITH ENGINE)

6
5
4
3
2
1
0
1/2"
X
3/32"



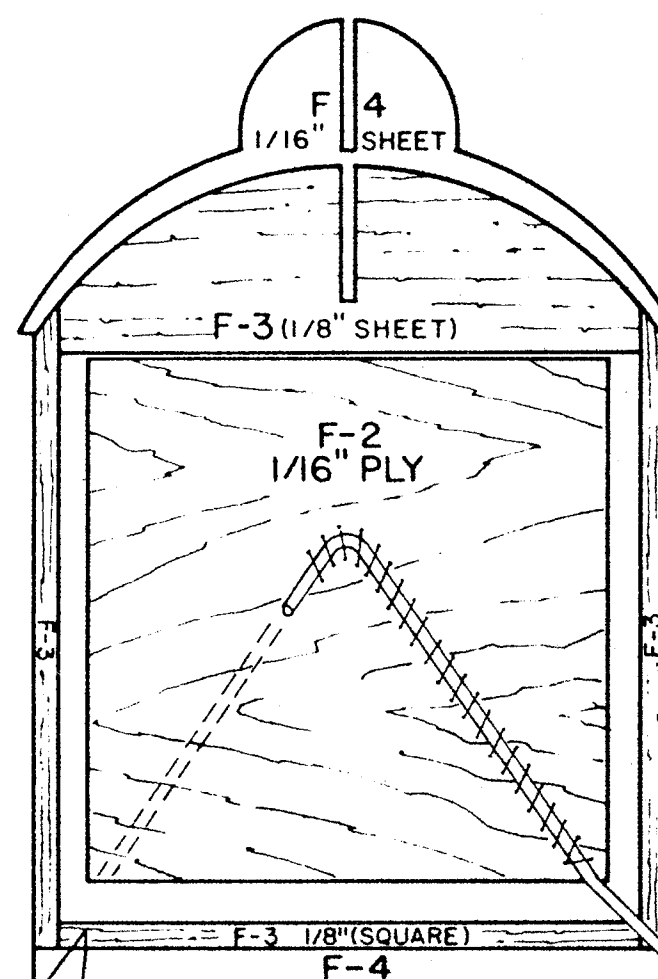
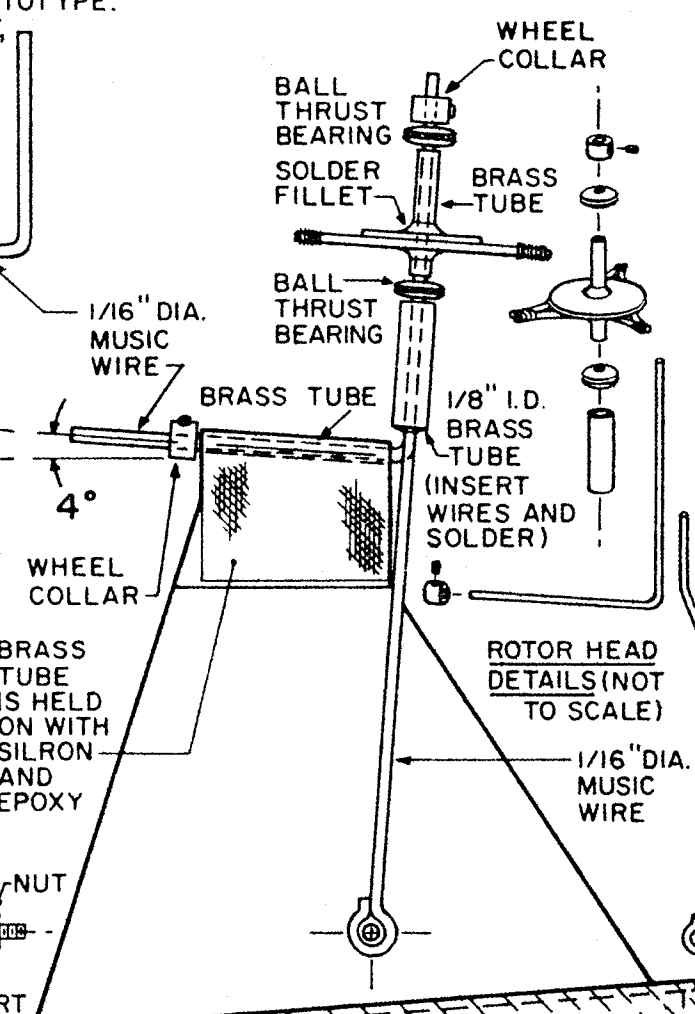
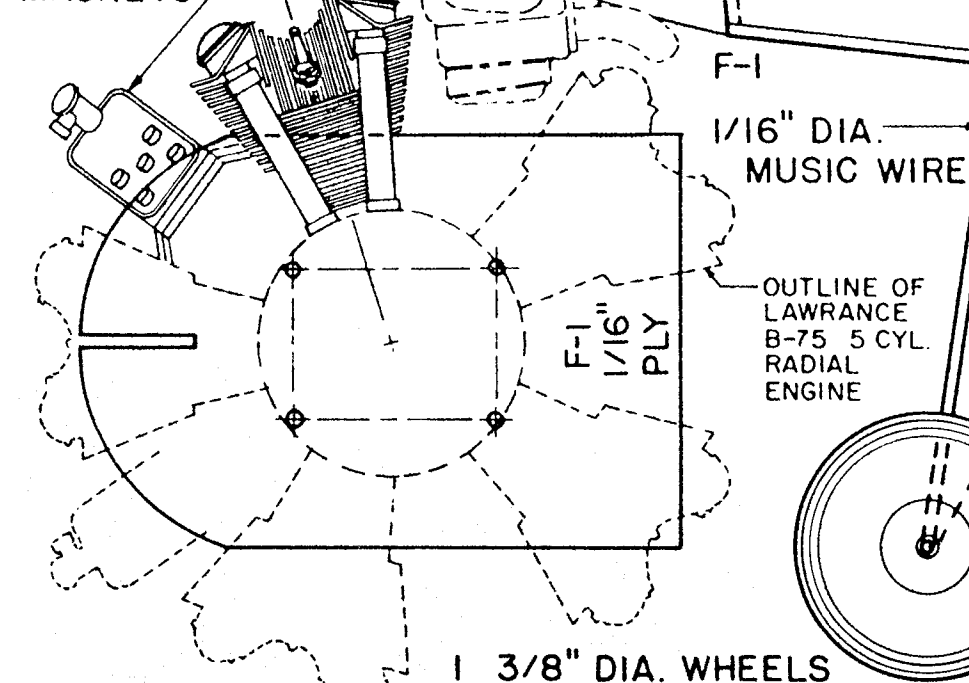
ROTOR PYLON
CONSTRUCTION
(NOT TO SCALE)

EXHAUST
RESTRICTOR
RING
(NOT TO SCALE)

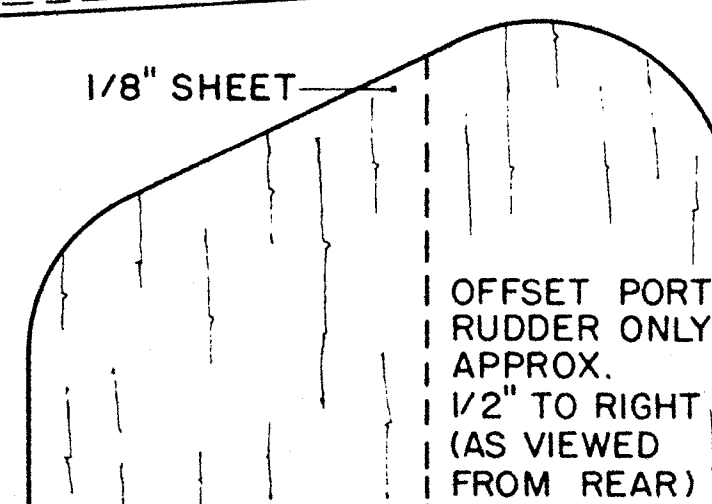
COX .049
GOLDEN BEE
SHOWN

5°
DOWNTHRUST

MAGNETO

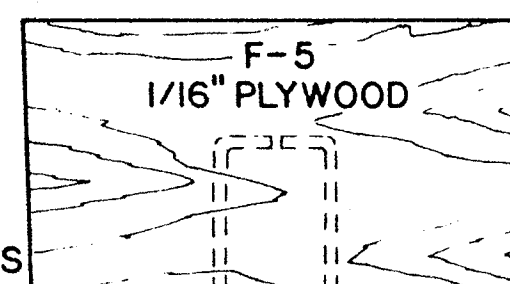


ACETATE WINDSHIELD
SPLIT PLASTIC TUBING
HEADREST PAD
(1/8" SHEET)

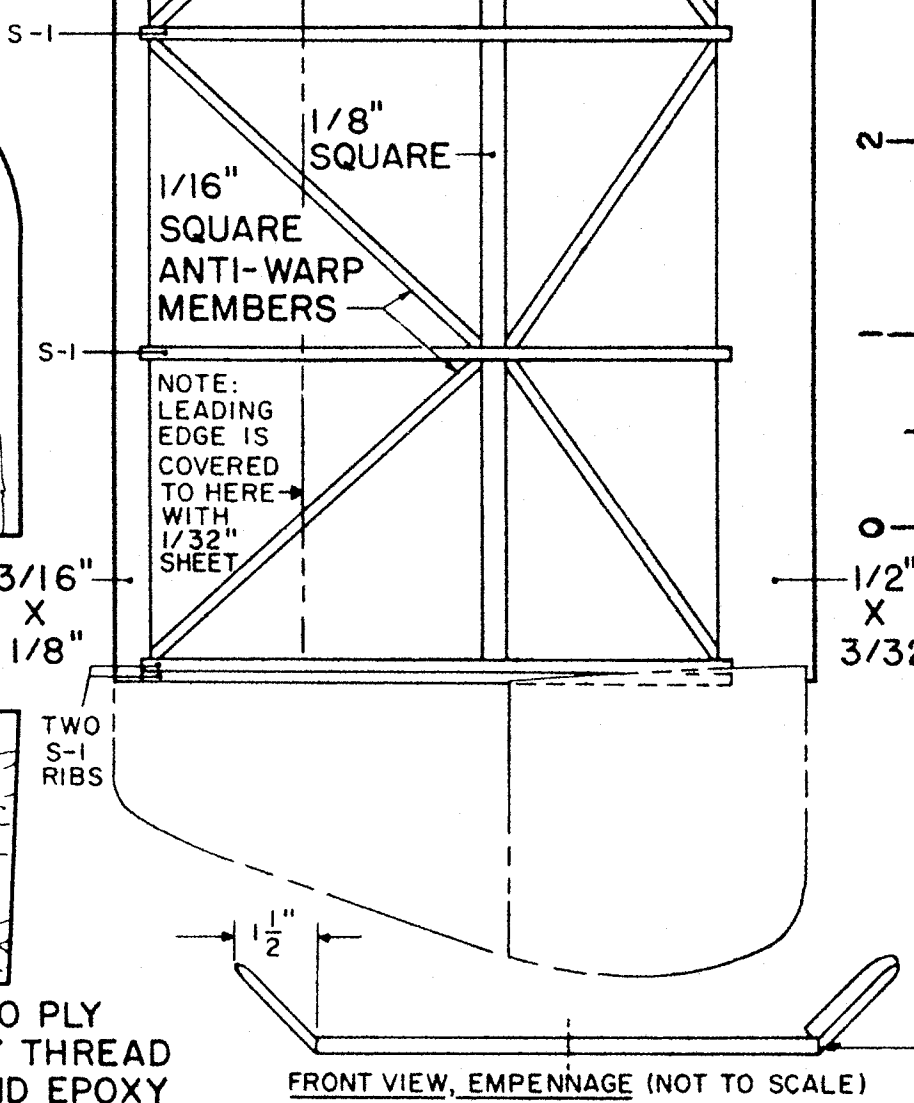


COLOR SCHEME OF PROTOTYPE
ENTIRE EXTERIOR: ORANGE
COCKPIT INTERIOR: MEDIUM GREY

SOFT
BALSA
BLOCKS
HOLLOW
FOR
LIGHTNESS



SEW L.G. WIRE TO PLY
WITH HEAVY THREAD
AND EPOXY



BEVEL
TO
FIT

HORIZONTAL
REFERENCE LINE

NOTE:
FUSELAGE SIDES, TOP,
AND BOTTOM ARE
MADE FROM 1/16" SHEET
BALANCE POINT
SHEET BALSA L.G. FAIRING (OPTIONAL)

ROTOR BLADE (3 REQUIRED) (3/32" SHEET)
(TOP VIEW)

1/16" SQUARE SPRUCE LEADING EDGE

1" DIAMETER
TAILWHEEL

1/16" SHEET GLUED ON
UNDERSIDE OF EACH BLADE

POSITION OF
ROTOR SPIDER
WIRE ON
UNDERSIDE
AFTER
ASSEMBLY

ALL WOOD IS BALSA
UNLESS OTHERWISE
SPECIFIED.

LITTLE JUAN
FREE-FLIGHT AUTOGIRO
DESIGNED BY RAY CASWELL
DRAWING BY W.C. HANNAN
© 1966 BY W.C. HANNAN

