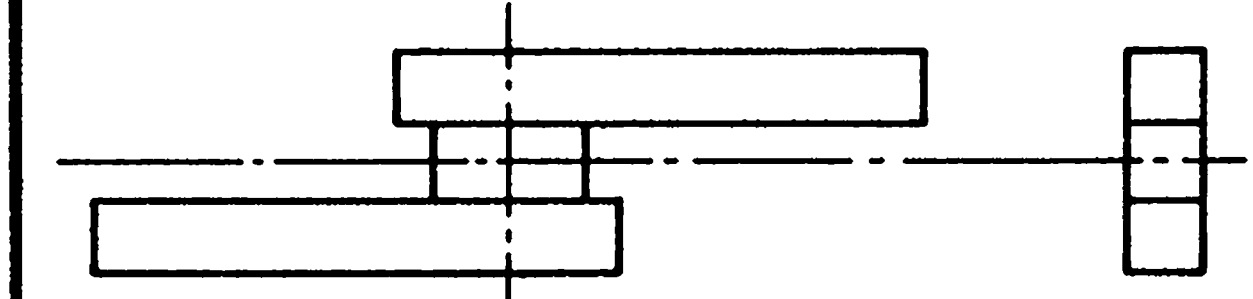
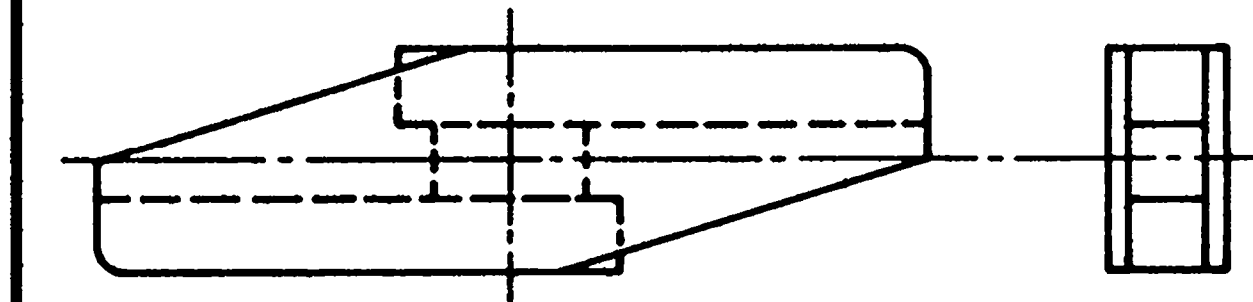


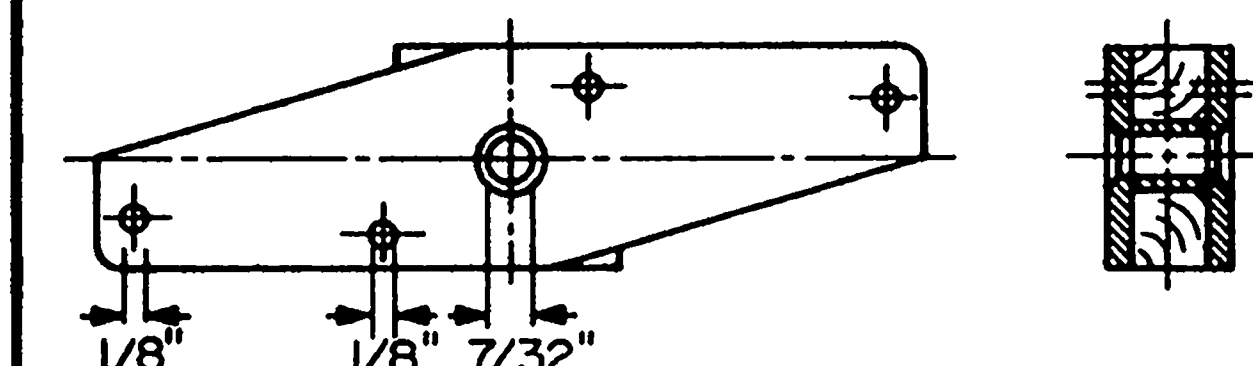
ASSEMBLY OF THE HUBS STEP 1: PINE BLOCKS GLUED TOGETHER



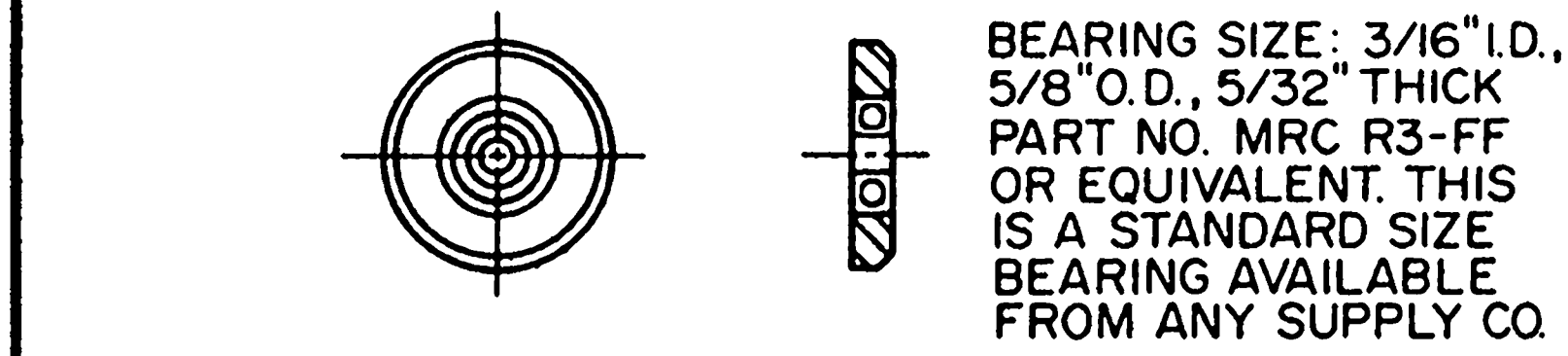
STEP 2: GLUE THE COVERPLATES TO THE PINE BLOCKS



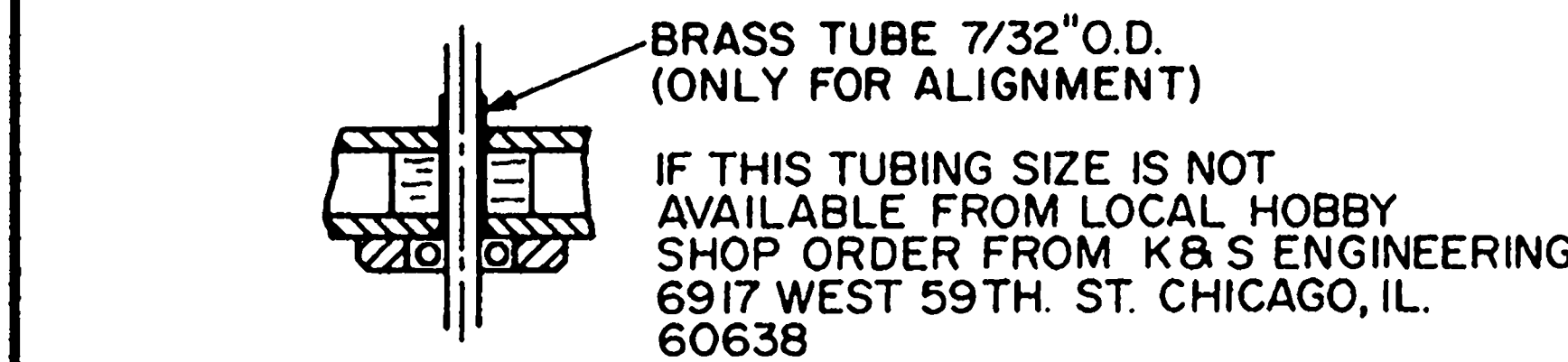
STEP 3: DRILL AND COUNTERSINK THE HOLES



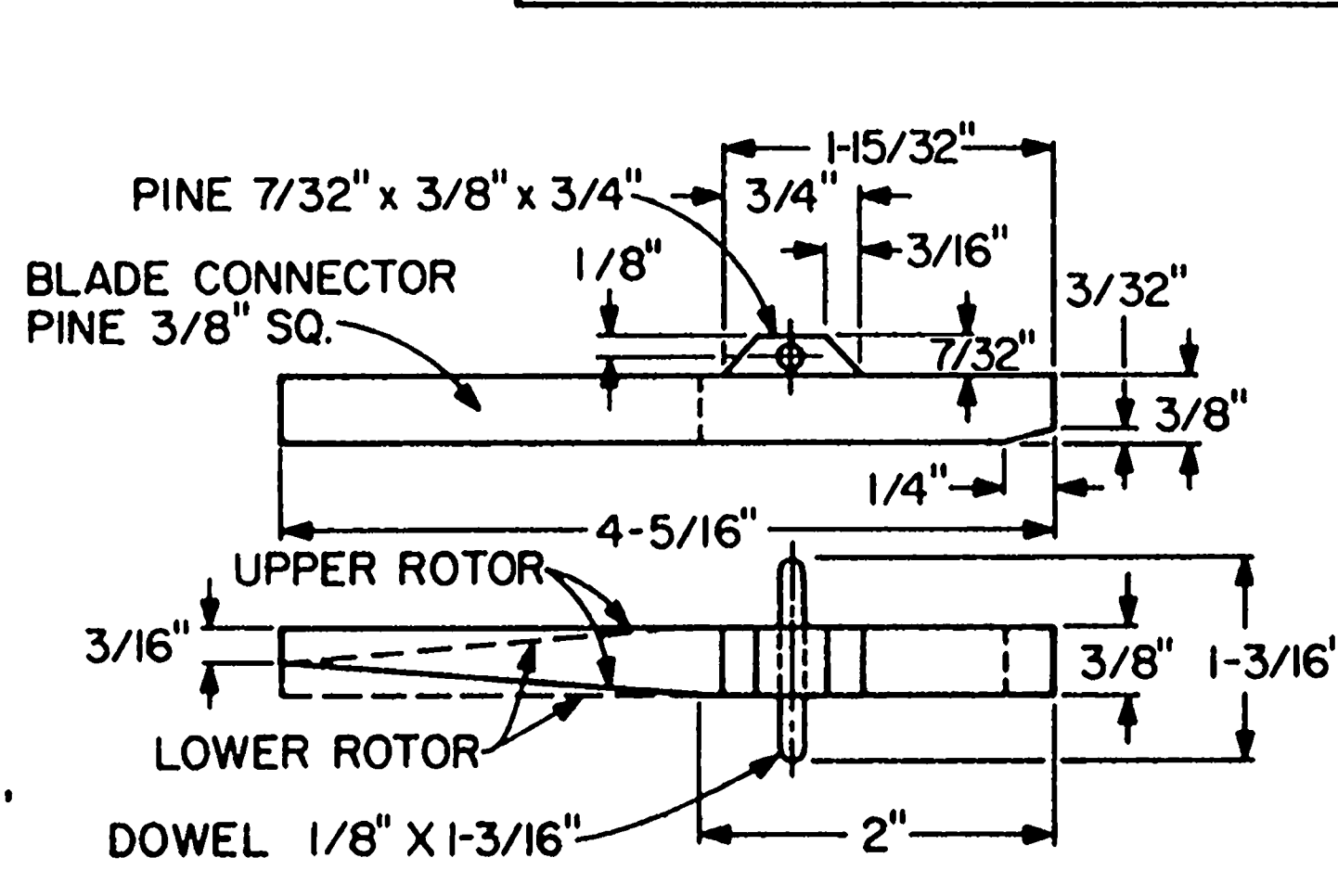
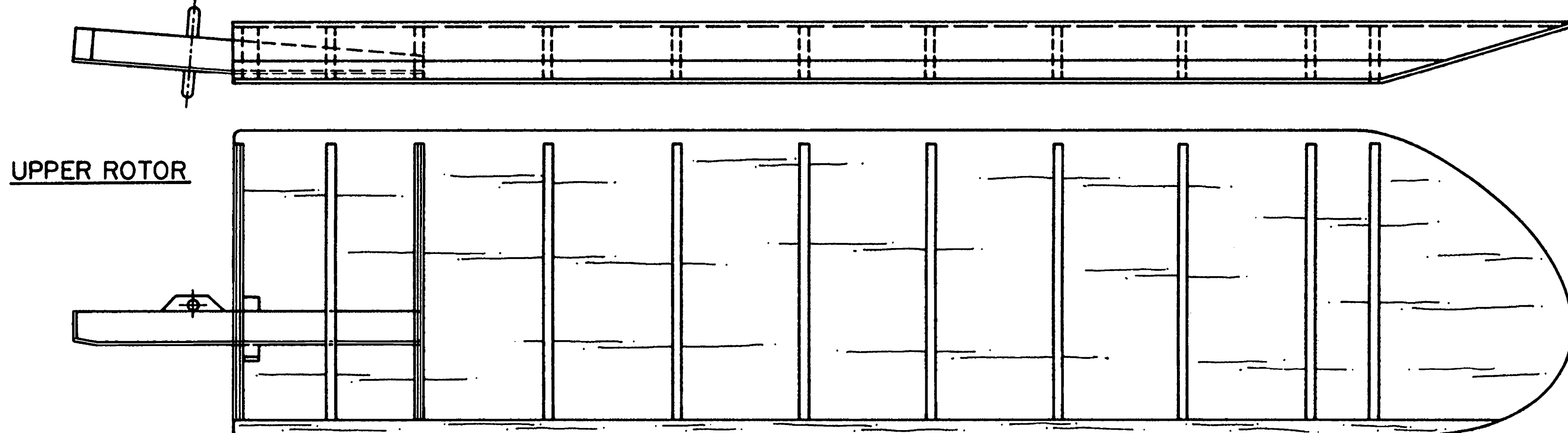
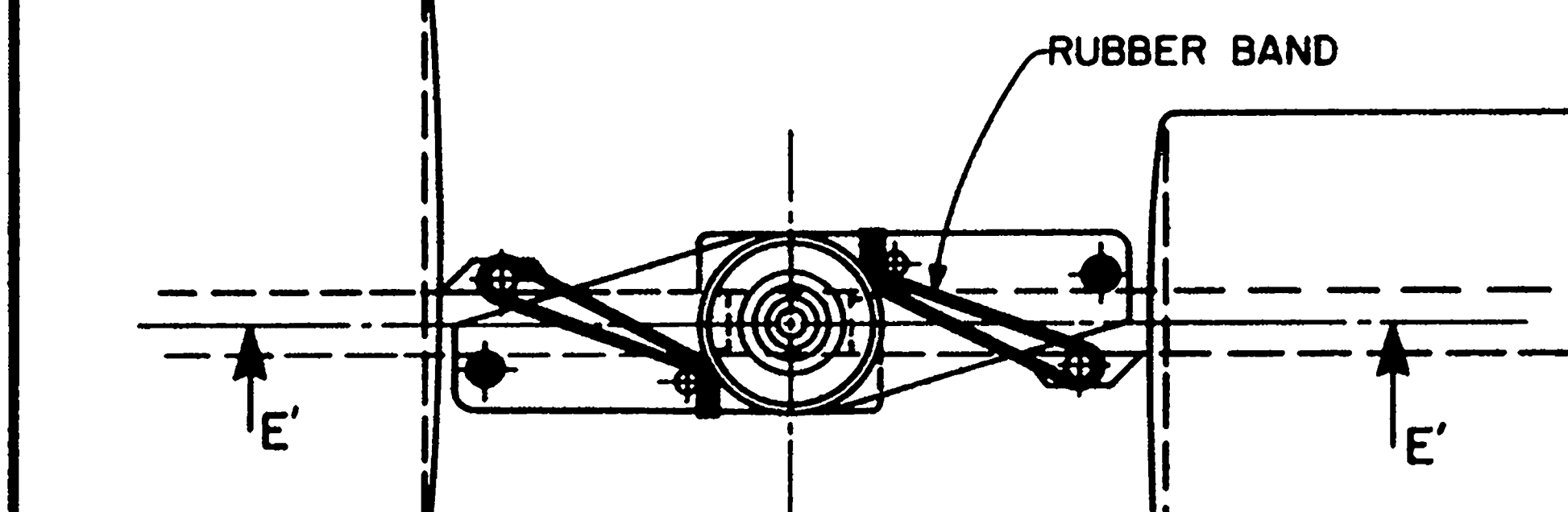
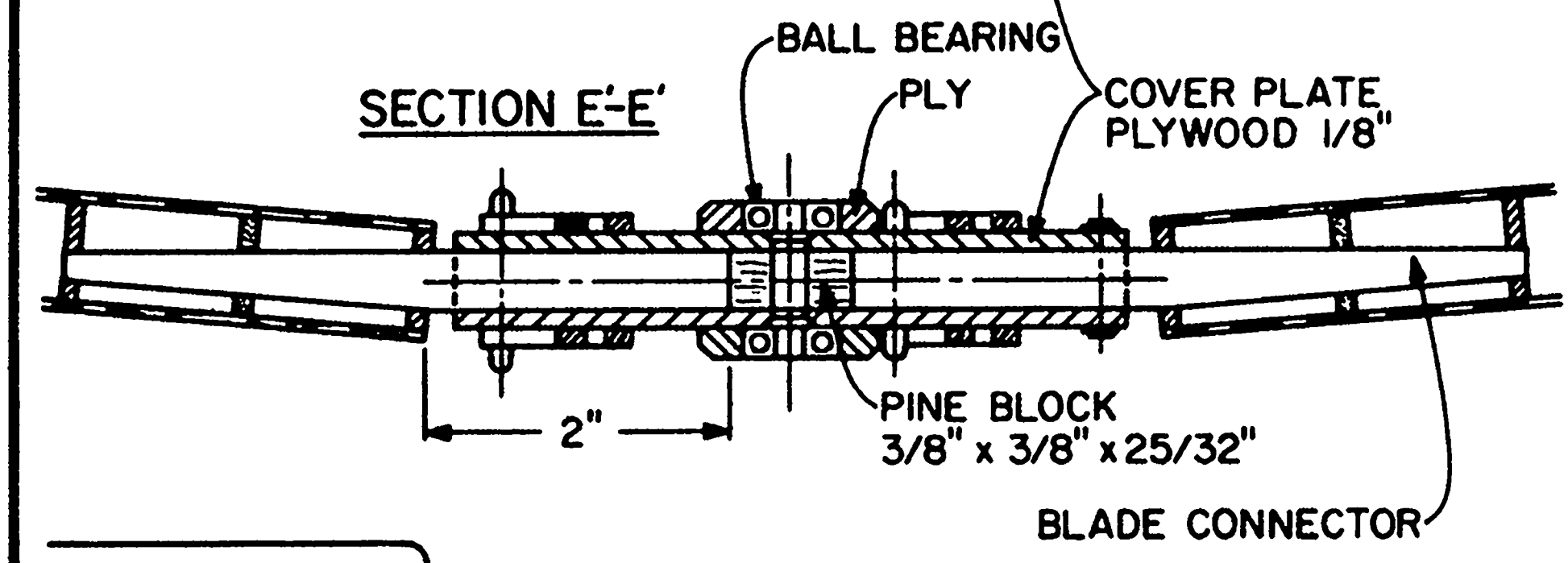
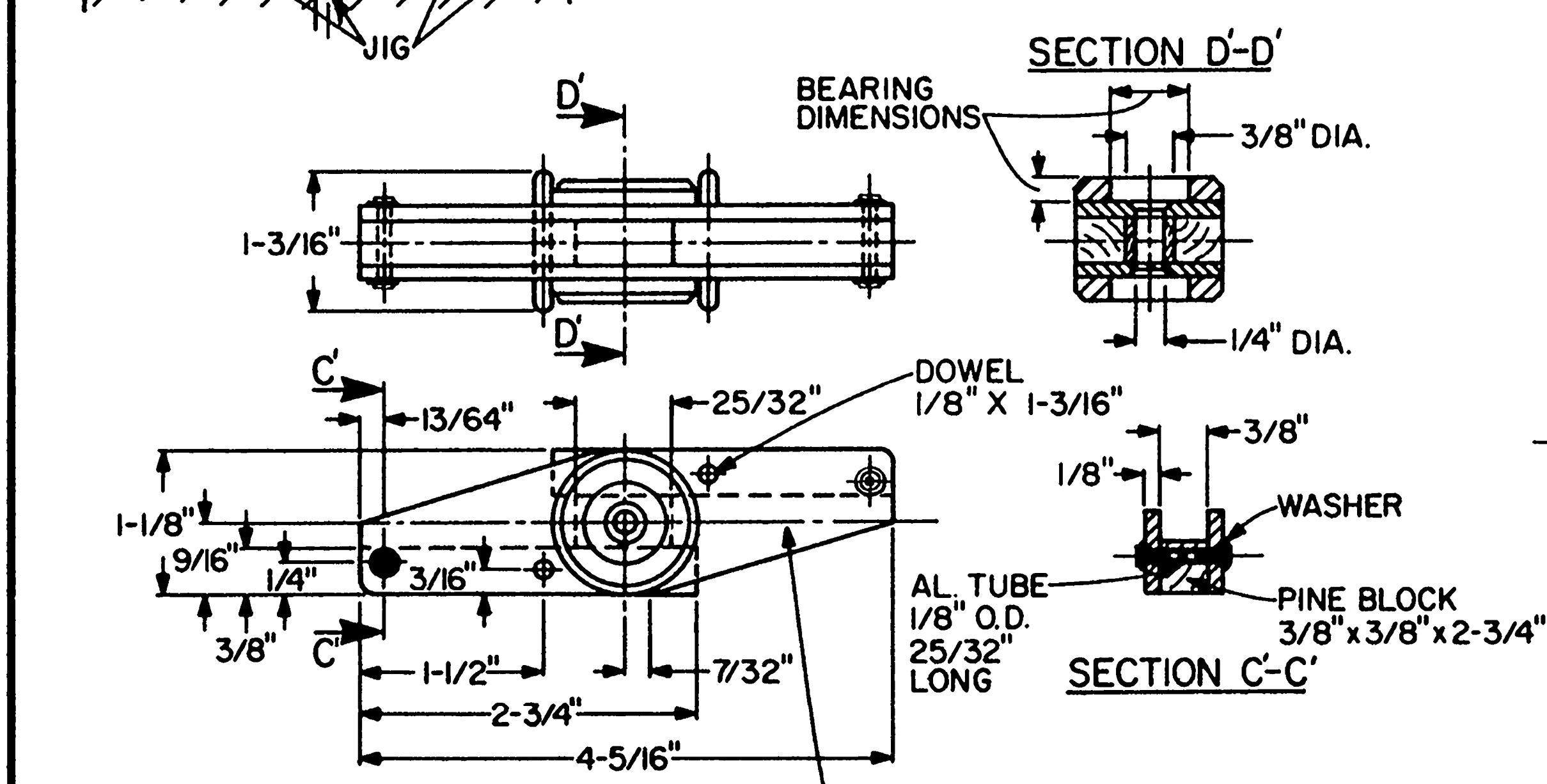
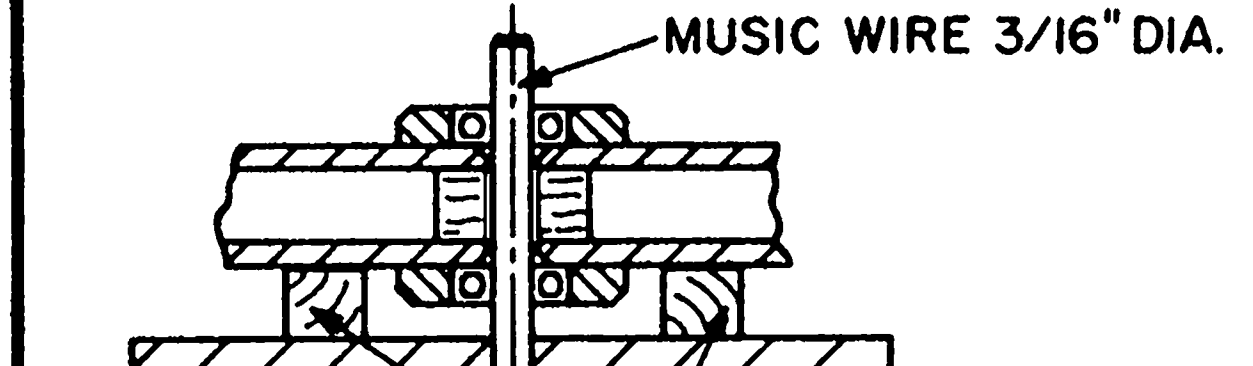
STEP 4: FIX THE BALL BEARINGS IN THE PLYWOOD DISKS



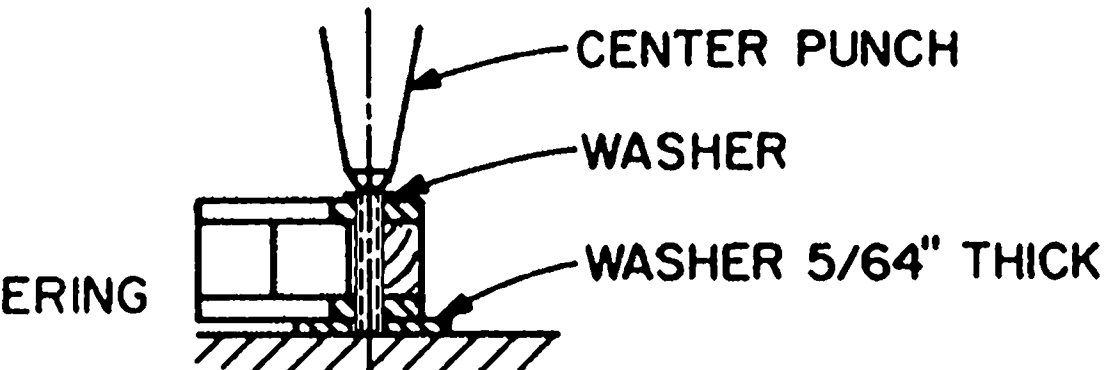
STEP 5: INSTALLATION OF THE FIRST BEARING



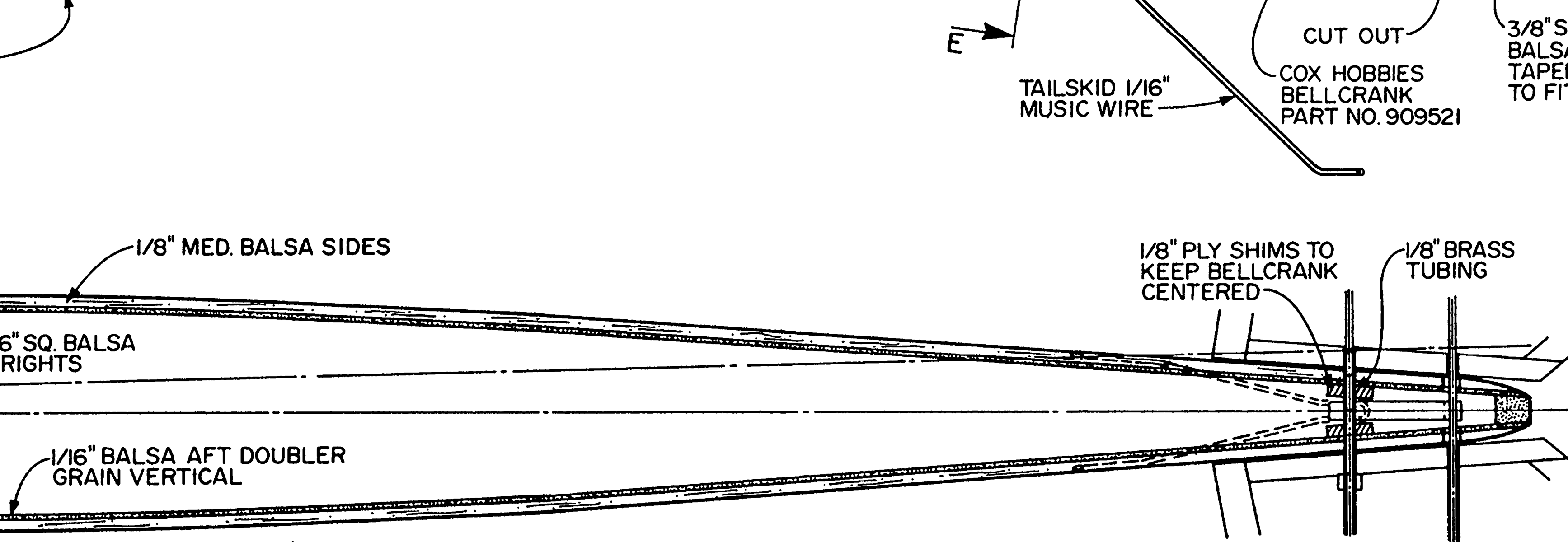
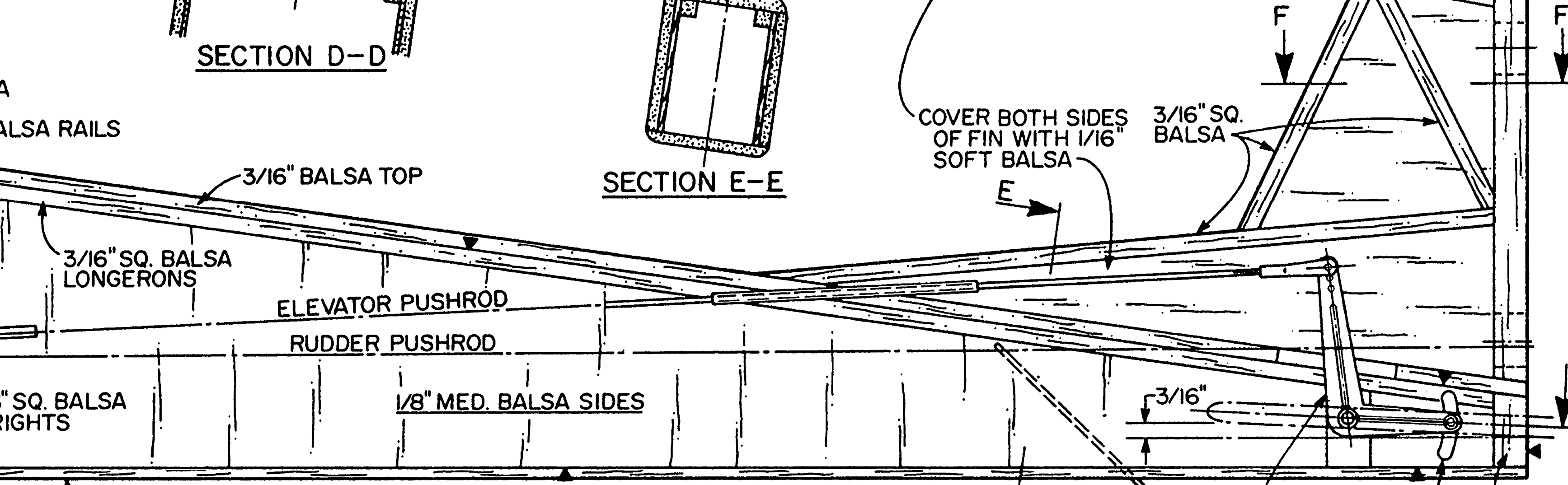
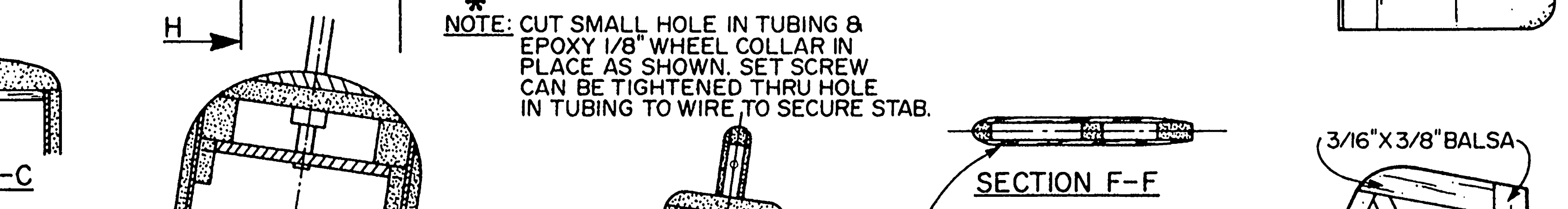
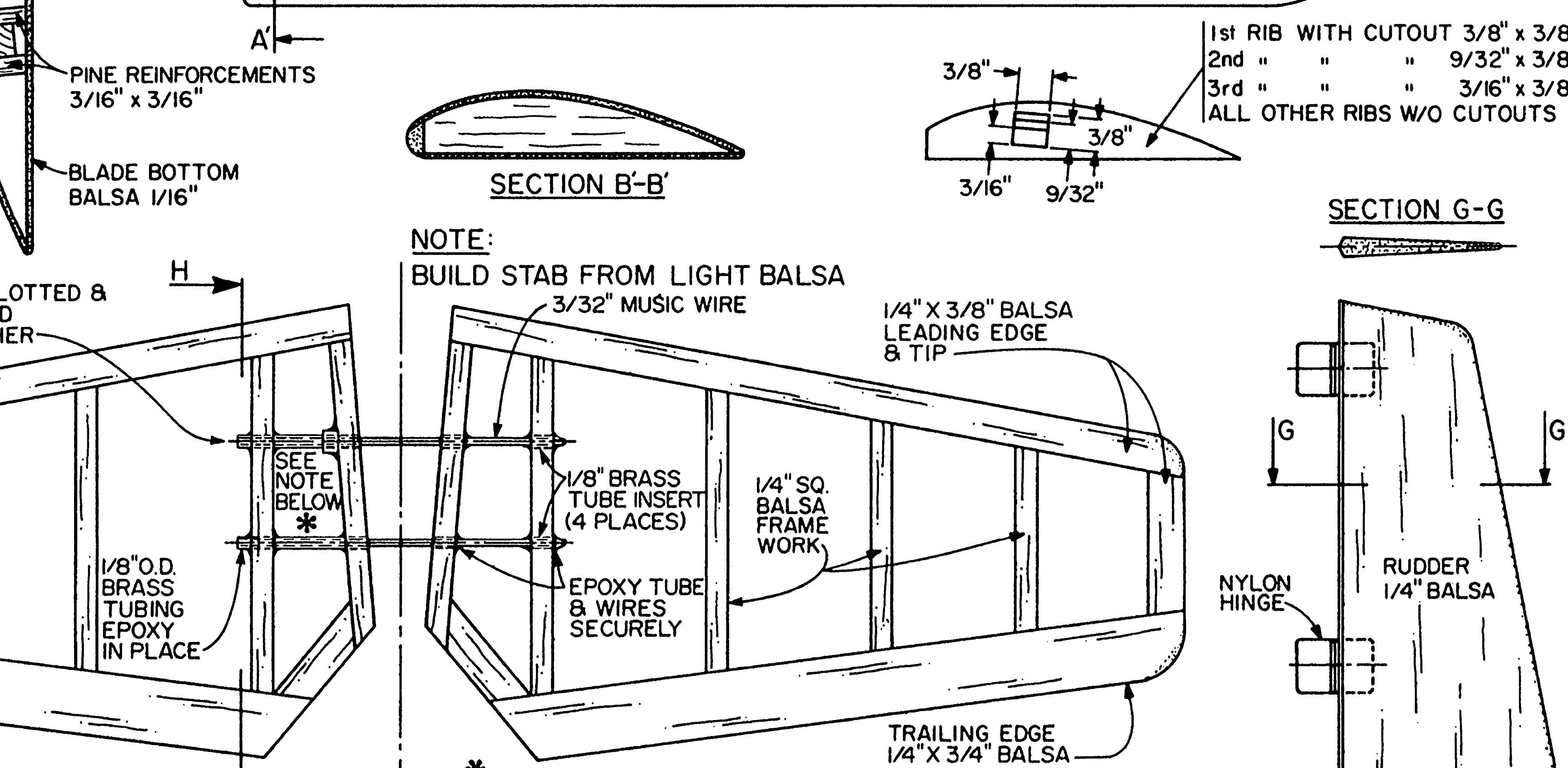
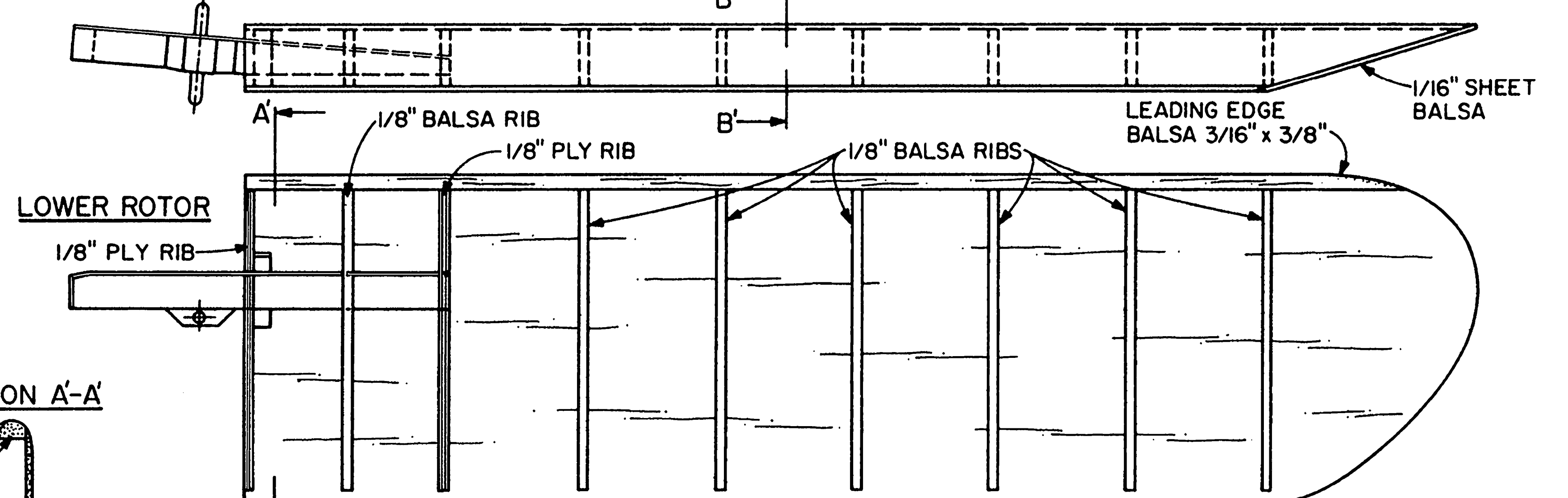
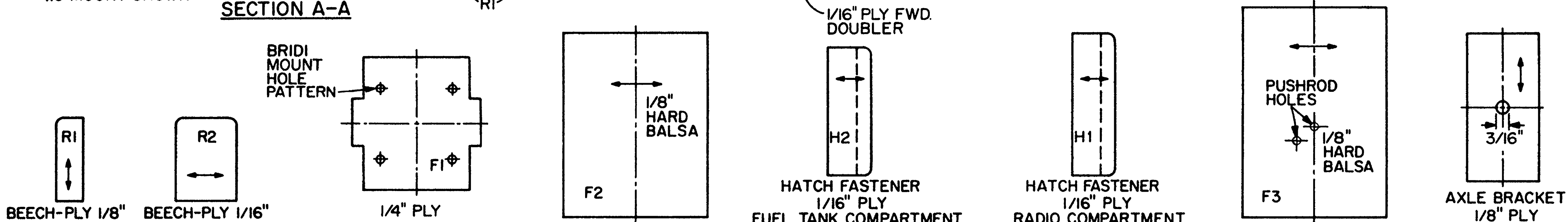
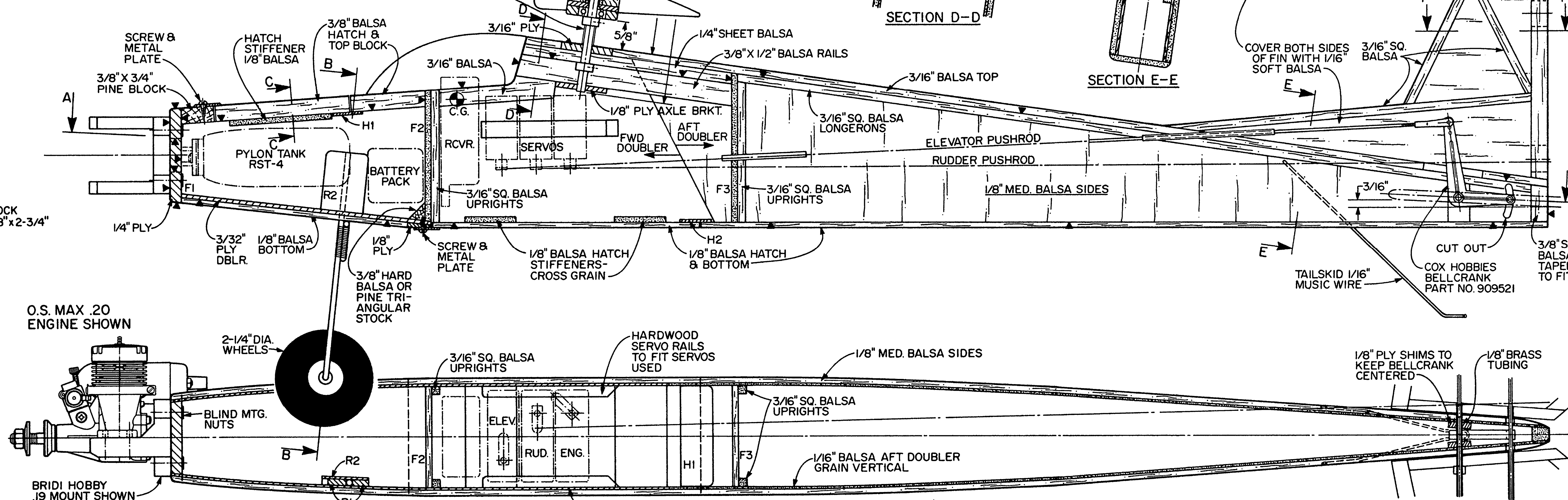
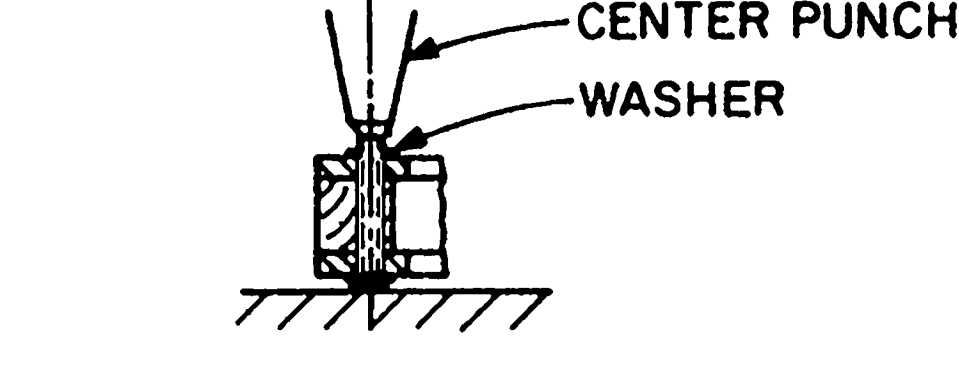
STEP 6: INSTALLATION OF THE 2ND BEARING



STEP 7: RIVETING THE 1ST END OF THE TUBE



STEP 8: RIVETING THE OTHER END OF THE TUBE



RCM ALL COMMERCIAL RIGHTS RESERVED

R-C AUTOGYRO

SUPER LIBELLE

DESIGNED & DRAWN BY HELMUT MEYER INKED BY DICK KIDD LEE DAWALO

0 1 2 3 4 5 6

PLAN NO. 708