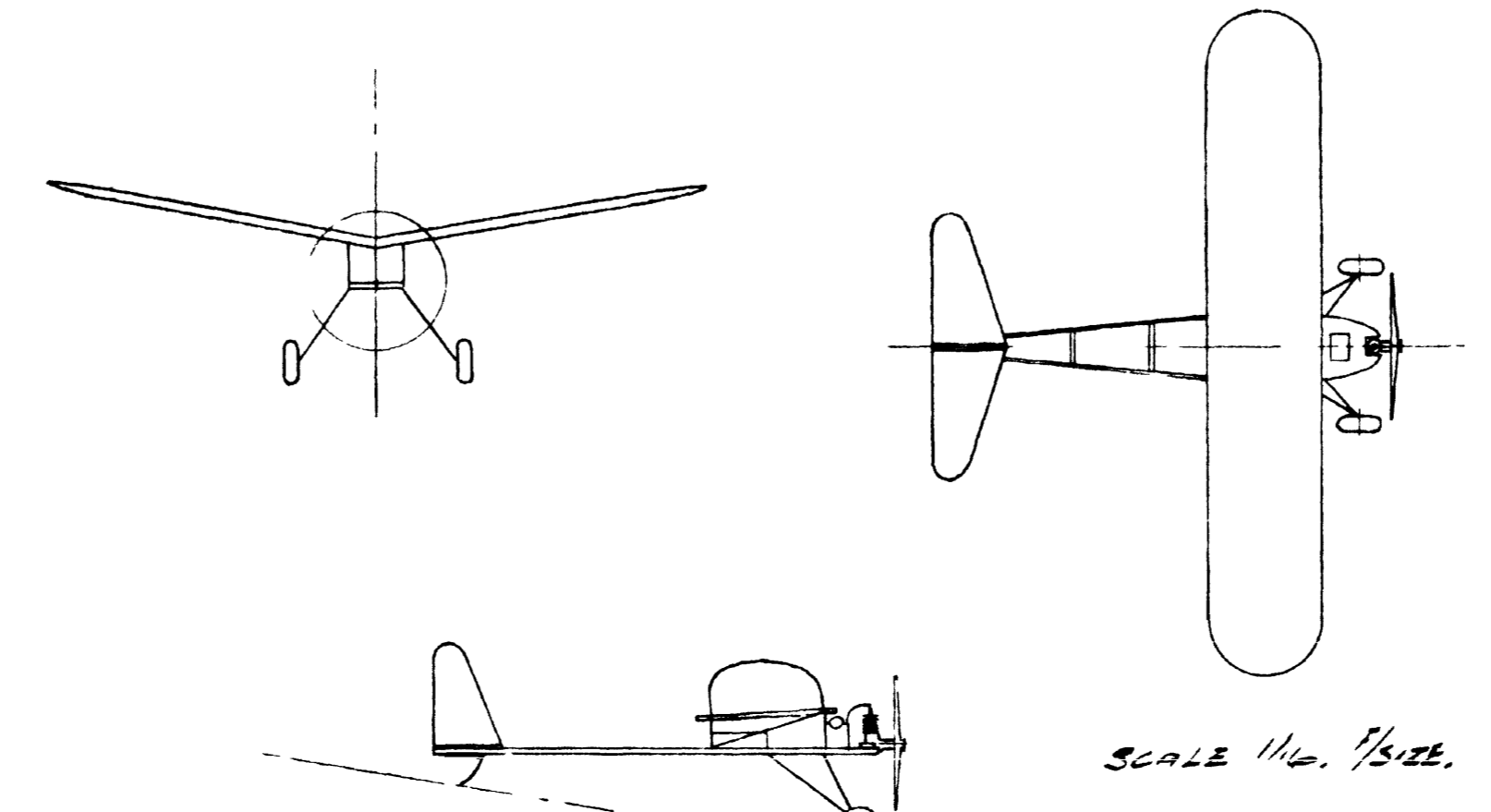
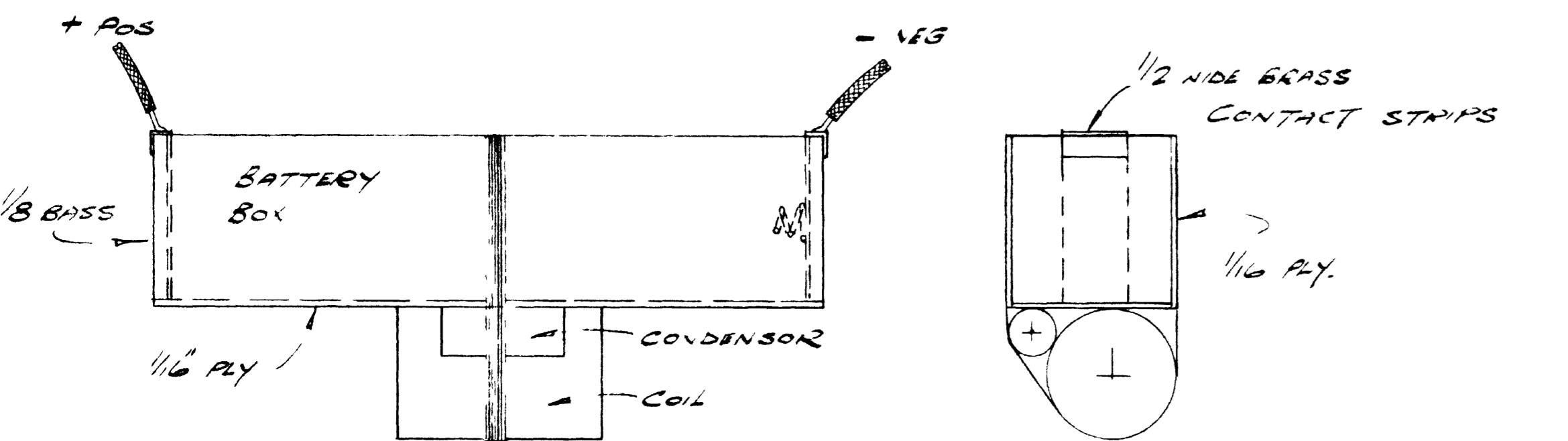
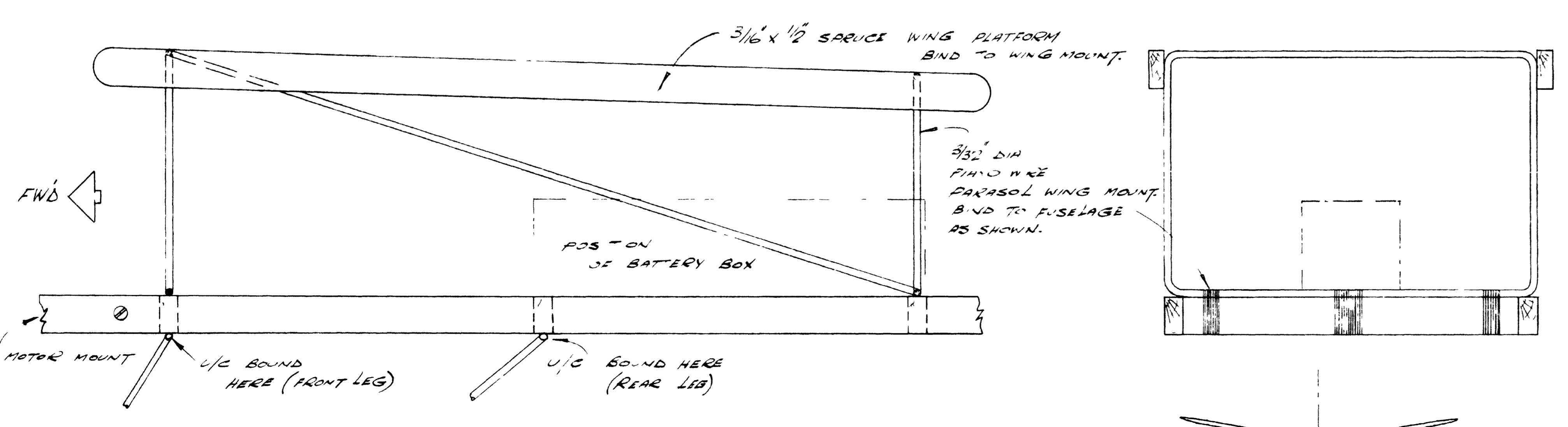
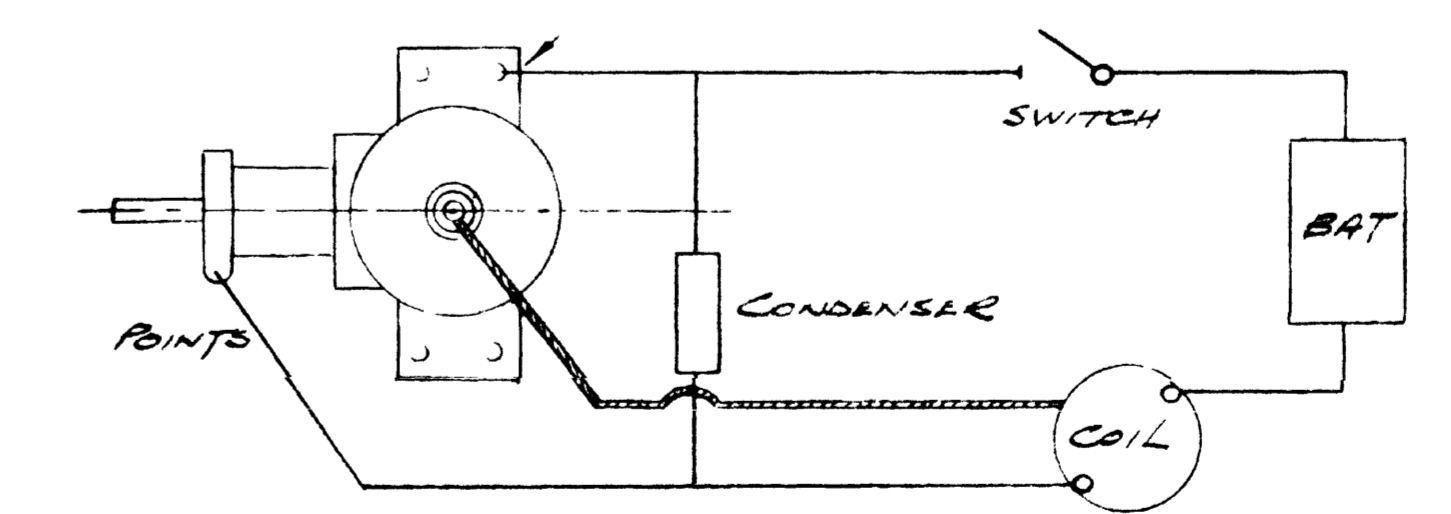
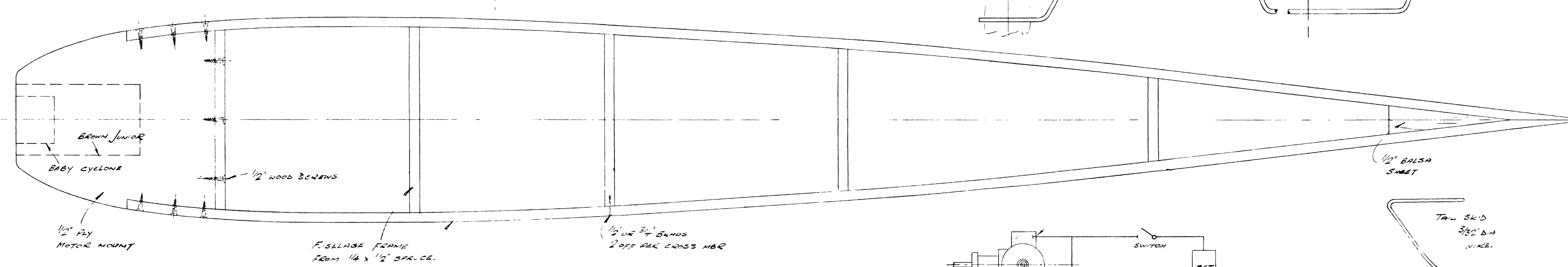
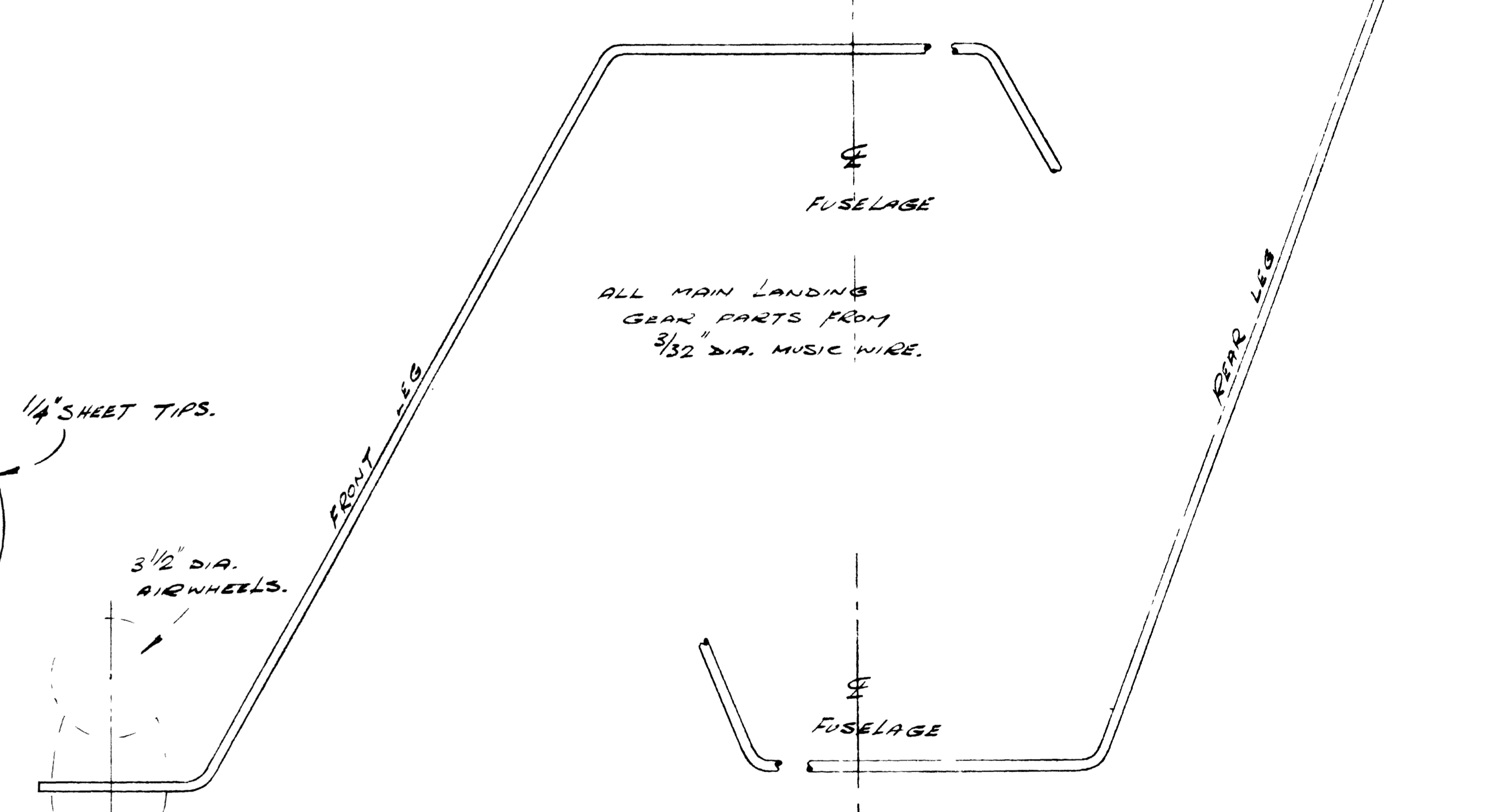
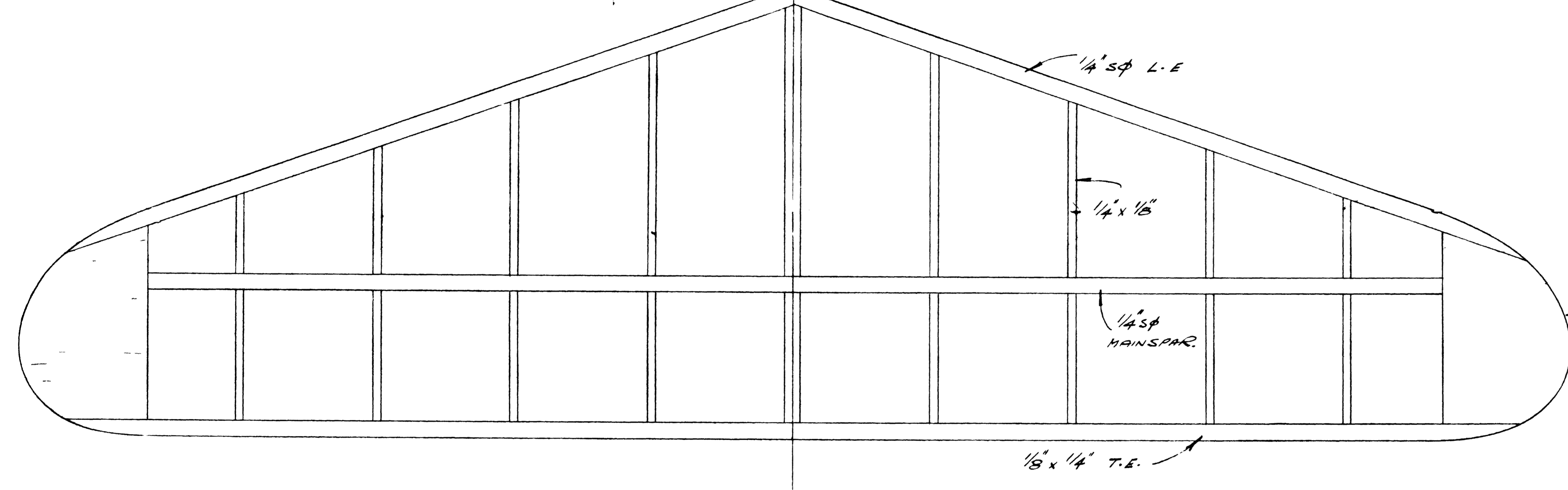
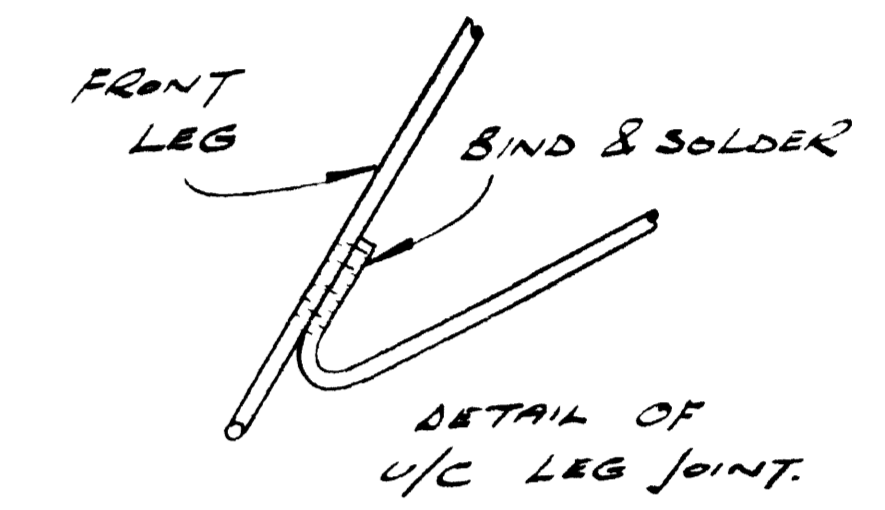
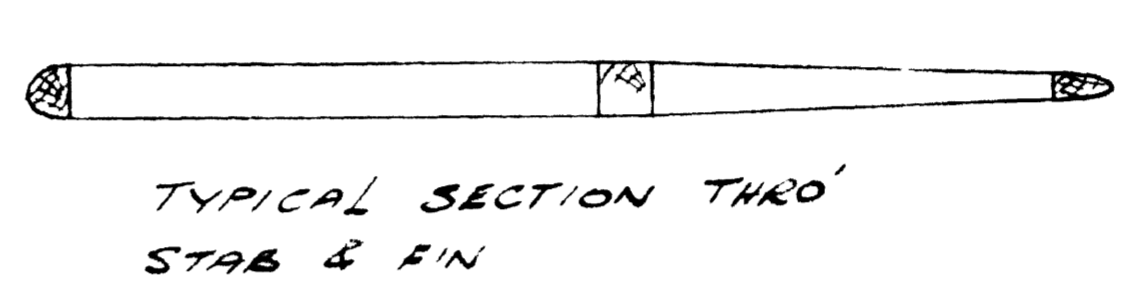
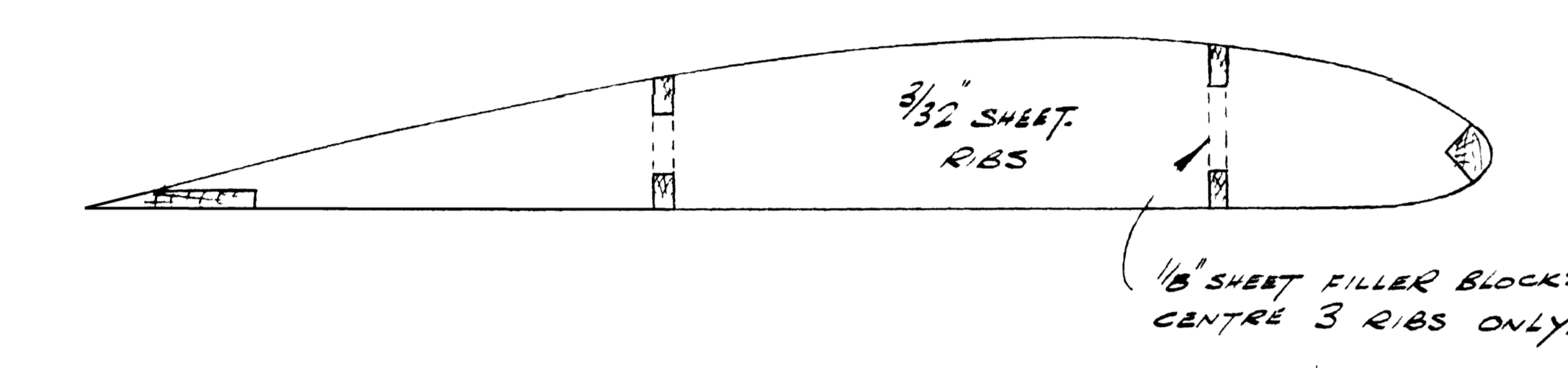


TIPS 2 LAMINATIONS OF 1/8" SHEET CROSS GRAINED

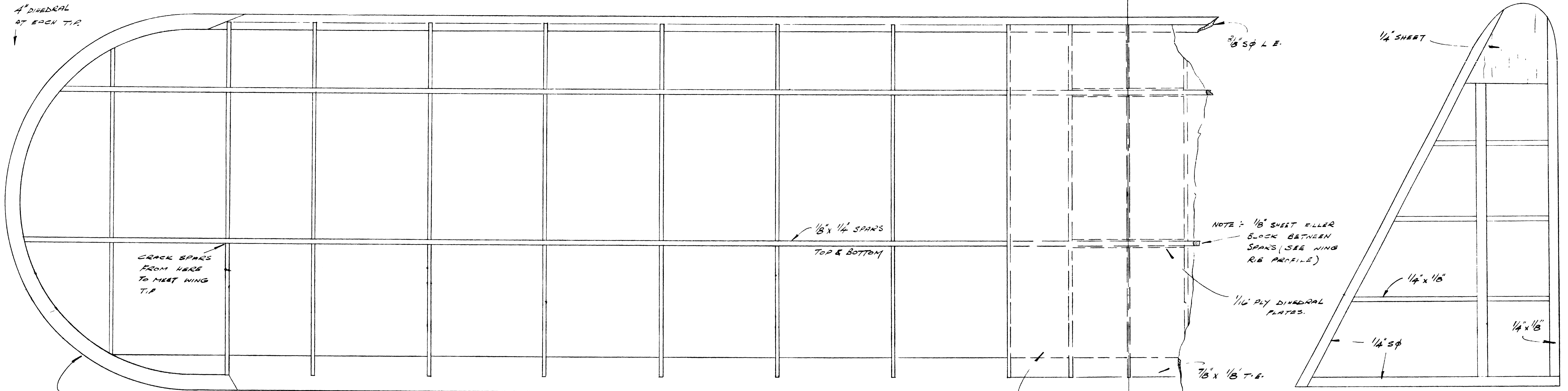


NOTES:-
 BALANCE MODEL 1 1/2" BACK FROM L.E.
 (BY MOVING WING FORWARD OR AFT) FOR
 INITIAL TEST GLIDES. ON POWERED FLIGHT,
 SHOULD MODEL TURN STERELY, CORRECT BY
 MOVING WING OVER TO SIDE REQUIRING MORE
 LIFT. MOVE WING FORWARD A LITTLE AT
 A TIME UNTIL YOU GET A SMOOTH FLAT
 GLIDE WITHOUT ANY STALLING TENDENCY.

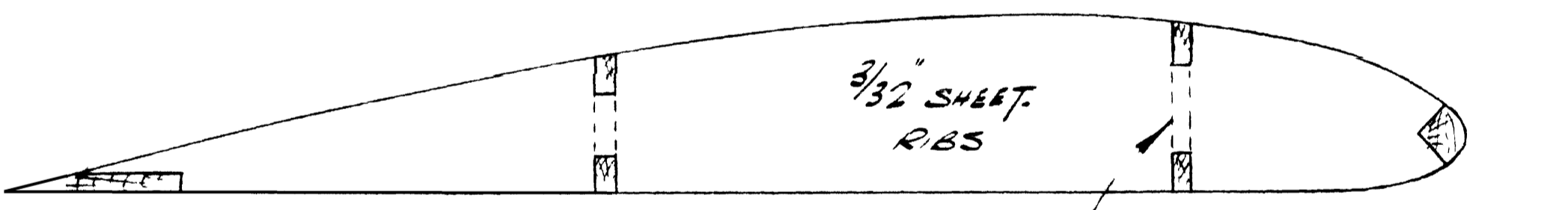
1936 "FLYING ACES" STICK GAS MODEL

ORIGINAL DESIGN BY: BILL EFFINGER & THOMAS PETRUS.	SCALE & MOD: Haggard
WING SPAN: 60"	ORIGINAL MODEL SCANNED LIGHT BLUE & ORANGE.
LENGTH: 7 1/2" HT	FITTED 'BABY CYCLONE' MOTOR
WEIGHT: 2 1/2 lbs. (MAX)	ALL WOOD BALSA, UNLESS STATED OTHER.
SCALE: 1/16"	

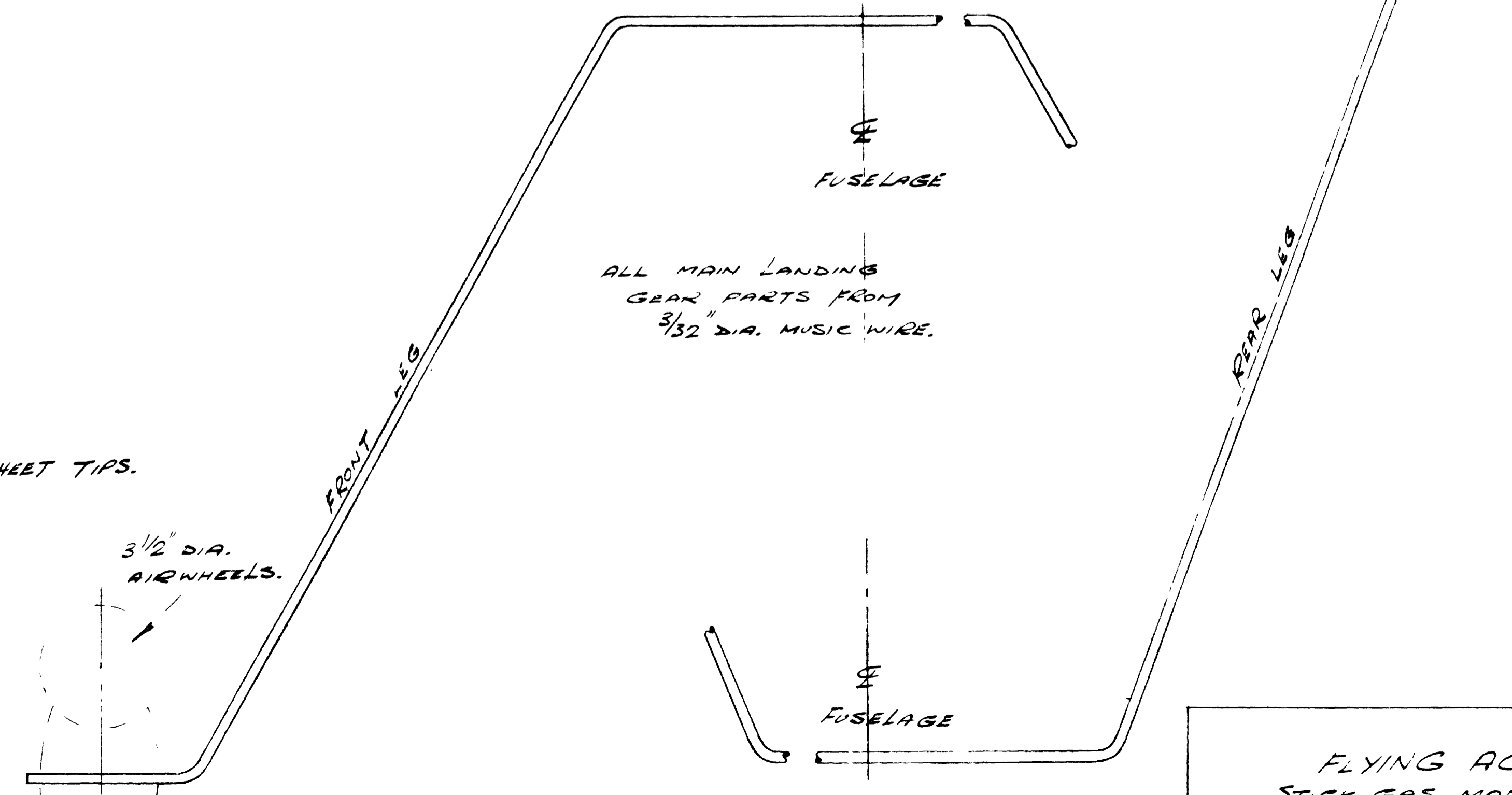
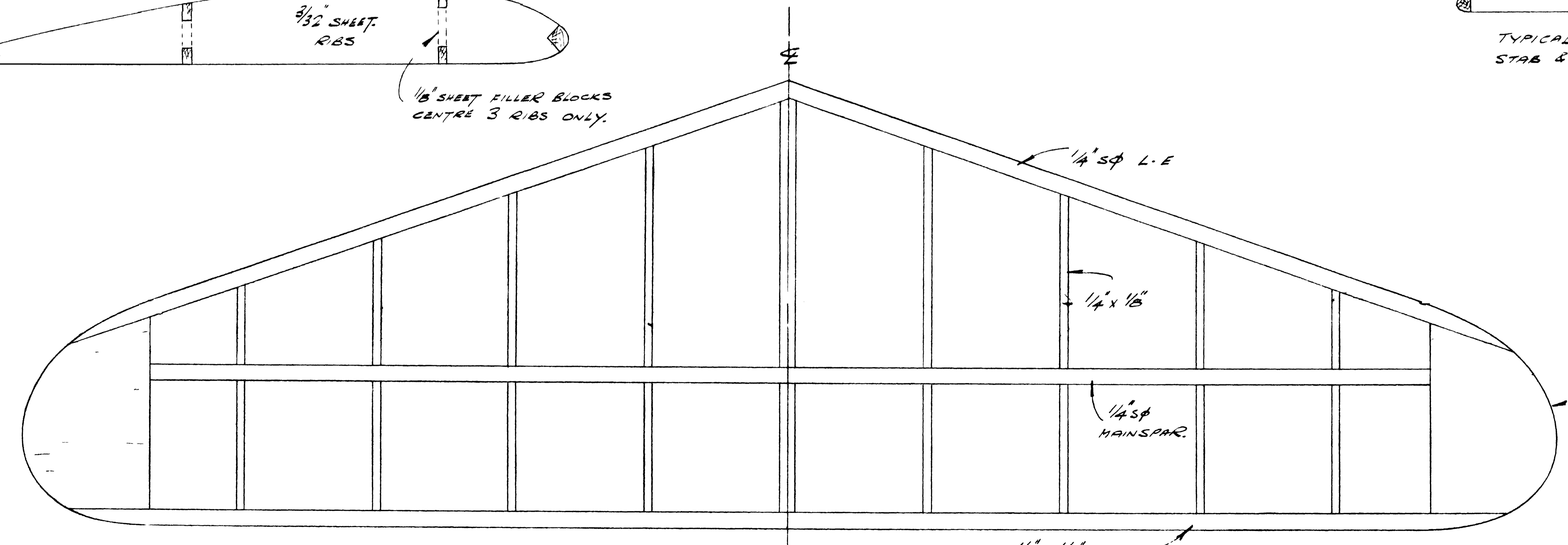
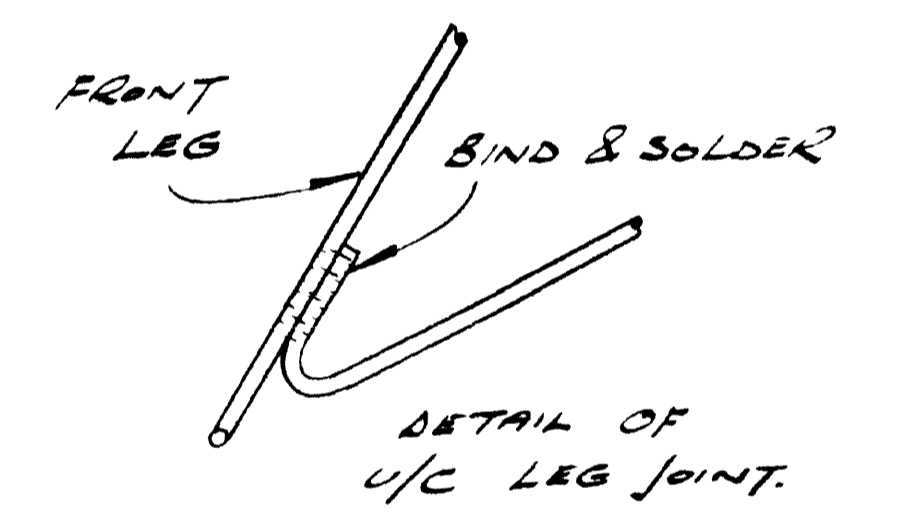
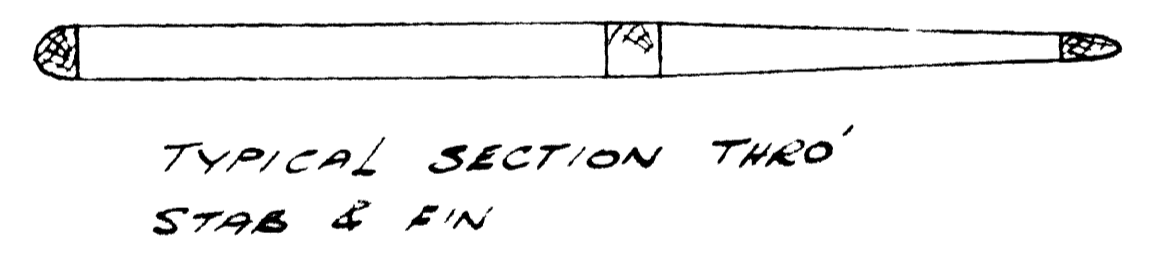
THIS FULL SIZE PLAN IS DISTRIBUTED BY
 AIRCRAFT PLAN CO.
 P.O. BOX 143, FRANKLIN SQ., N.Y.
 A Skystone Reproduction



TIPS 2 LAMINATIONS OF 1/8" SHEET CROSS GRAINED



1/8" SHEET FILLER BLOCKS CENTRE 3 RIBS ONLY.



FLYING ACES STICK GAS MODEL