

SEE SEPERATE DETAIL FOR STRUT FABRICATION

1/16 HARD Balsa STRINGER AT OUTSIDE THIS LOCATION

TAIL POST ASSY SW-100

SW-057 (INSTRUMENT PANEL)

SW-070 (SW-078 BEHIND)

1/32 SHEET GUSSETS, UNLESS NOTED OTHERWISE

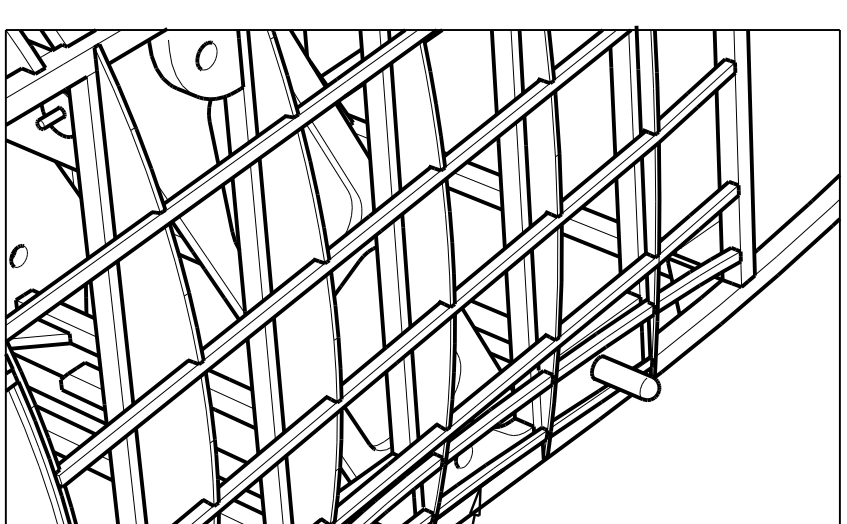
SW-061 SEE DETAIL INFO NEAR SIDE VIEW

1/16 SO Balsa STRINGERS

SW-055

SW-056

ALUMINUM TUBE MOTOR SUPPORT



FABRICATE TEMPLATE TO FORM PACKING AROUND WING. TWO LAMS OF 1/32 X 1/16 PER FORM.

LOWER WING STUB FUSELAGE/WING PACKING. COMPLETE THE LOWER STUB WING BEFORE ADDING THE PACKING.

SW-402 - 1.25 OD X .04 WALL ALUM TUBE TRIM TO LENGTH SHOWN BEFORE INSTALLATION

1/16 X 1/8 Balsa STRINGERS

SW-010 (FRONT)

SW-011 1/32 Balsa 2 REOD

SW-012 1/32 Balsa 2 REOD

SW-013 1/32 Balsa 2 REOD

SW-014 1/32 Balsa 2 REOD

SW-015 1/32 Balsa 2 REOD

SW-016 1/32 Balsa 2 REOD

SW-017 1/32 Balsa 2 REOD

SW-018 1/32 Balsa 2 REOD

SW-019 1/32 Balsa 2 REOD

SW-020 1/32 Balsa 2 REOD

SW-021 1/32 Balsa 2 REOD

SW-022 1/32 Balsa 2 REOD

SW-023 1/32 Balsa 2 REOD

SW-024 1/32 Balsa 2 REOD

SW-025 1/32 Balsa 2 REOD

SEE OTHER DRAWINGS DETAILING LOCATION AND STYLE OF WIRE STAYS

LOCATING HOLE FOR CENTER WING STUBS

1/16 SO Balsa STRINGERS

SW-009

SW-014

SW-013

SW-012

SW-011

SW-010 (BACK)

SW-016 (FRONT)

SW-006

SW-052

SW-053 1/32 PLY MAKE 1 LH 1 RH

SW-052 1/16 Balsa 2 REOD MAKE 1 LH 1 RH

SW-051 1/16 Balsa 2 REOD

SW-050 1/16 Balsa 2 REOD

SW-049 1/16 Balsa 2 REOD

SW-048 1/16 Balsa 2 REOD

SW-047 1/16 Balsa 2 REOD

SW-046 1/16 Balsa 2 REOD

SW-045 1/16 Balsa 2 REOD

SW-044 1/16 Balsa 2 REOD

SW-043 1/16 Balsa 2 REOD

CENTER LINE SECTION

SW-079 1/16 Balsa

SW-078 1/32 Balsa

SW-070 1/16 Balsa

SW-069 1/16 Balsa

SW-080 1/32 Balsa

SW-081 1/16 Balsa

SW-082 1/32 Balsa

SW-083 1/16 Balsa

SW-096 (2) 1/16 Balsa

SW-100 1/16 Balsa

SW-098 1/16 Balsa

SW-097 1/16 Balsa

SW-098 1/16 Balsa

SW-099 1/16 Balsa

PRE ASSEMBLE STRUTS, IP AND FUSELAGE FOR PROPER FIT-UP BEFORE FINAL GLUEING. STRUTS SHOULD HAVE FINAL SHAPE AT THIS POINT OF ASSEMBLY.

1/8 x 1/4 LONG DOWEL AT THIS LOCATION. BOTH STRUTS TO FUSELAGE LINE-UP JOINTS. TO BE FLUSH AT BOTH ENDS.

1/8 DIA X 1/4 LONG DOWEL, BOTH SIDES.

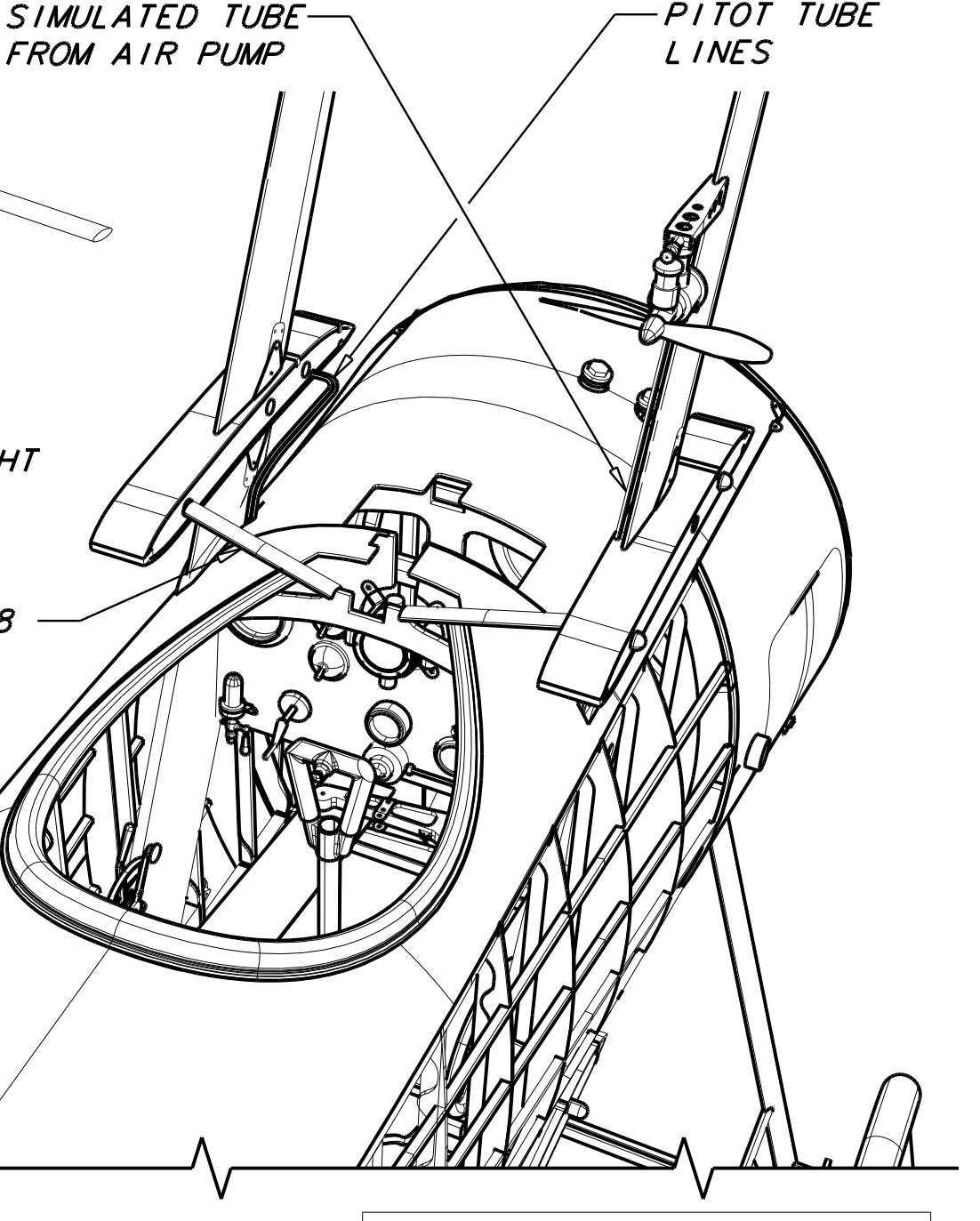
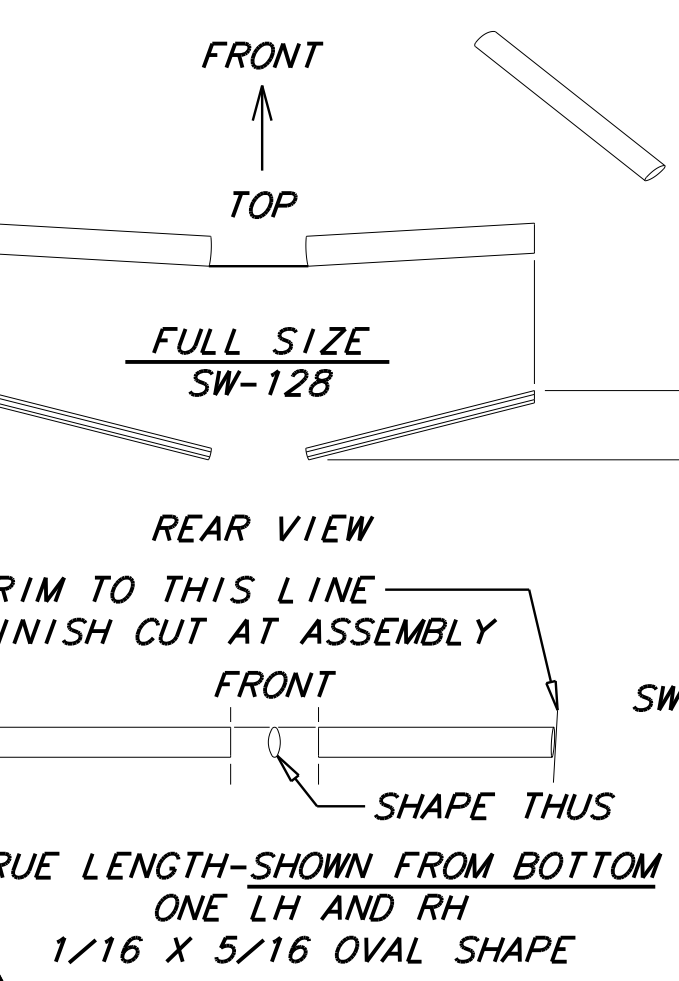
SLOT IS TRAPPED BY CROSS MEMBER

IP FITS IN SLOTS OF STRUTS

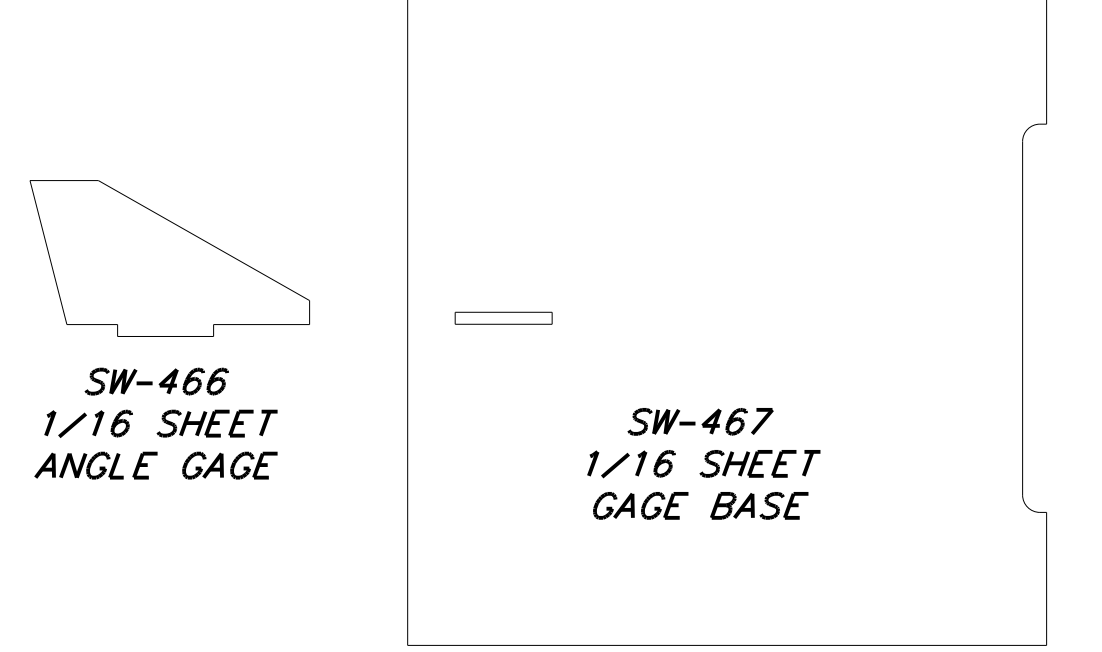
THIS HOLE FOR SCALE DETAIL HAND WHEEL.

ADD SMALL GUSSETS AFTER ADDING WIRE STAY LUGS

SILK THREAD MAY BE ADDED TO SIMULATE STAY WIRES AND BRACING.



FRONT TOP 150 FULL SIZE SW-128 REAR VIEW TRIM TO THIS LINE FINISH CUT AT ASSEMBLY FRONT SW-128 SHAPE THUS TRUE LENGTH-SHOWN FROM BOTTOM ONE LH AND RH 1/16 X 5/16 OVAL SHAPE



SW-466 1/16 SHEET ANGLE GAGE

SW-467 1/16 SHEET GAGE BASE

ASSEMBLE AS SHOWN IN SIDE VIEW USED TO ACCURATLY LOCATE FORMER SW-075 - REMOVE WHEN FORMER IS GLUED AND SET-

SHAPE AS SHOWN TRIM THRU AFTER FINAL SHAPE

THIS LINE MATCHES BACK OF SW-055

SW-059 SOFT Balsa BLOCK NOSE BLEND DETAIL C

SW-405 60 LB BOND

SW-416 1/16 PLY 4 REOD

SW-085 1/16 Balsa

SW-414 (2) 1/16 PLY

SW-081 1/16 Balsa

SW-082 1/32 Balsa

SW-083 1/16 Balsa

SW-096 (2) 1/16 Balsa

SW-100 1/16 Balsa

SW-098 1/16 Balsa

SW-097 1/16 Balsa

SW-098 1/16 Balsa

SW-099 1/16 Balsa

SW-098 1/16 Balsa

SW-099 1/16 Balsa

SW-100 1/16 Balsa

Although this document is a copyrighted document and may not be used to manufacture in any form, a production site of this design as shown here, it is given freely to the modeling public via "My Rocket Associates" for personal use in creating the model portrayed here. ThomasDesigns retains and reserves the production rights to manufacture the model as shown on these documents. Signal "Gregory J Thomas" Super14, for ThomasDesigns.

KIT NUMBER 401	SHEET 3
COPYRIGHTED MATERIAL	