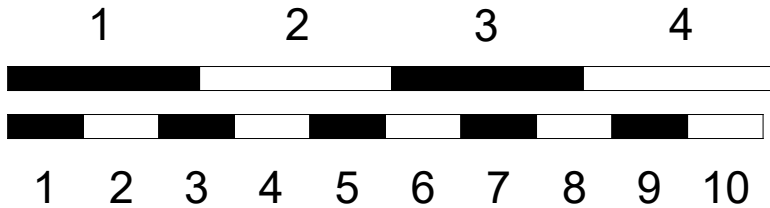




Mighty Mini Sleigh

Beta v.1

Designed by: Dale Stratton
AKA LocalFiend



Inches

Centimeters

SPECS:

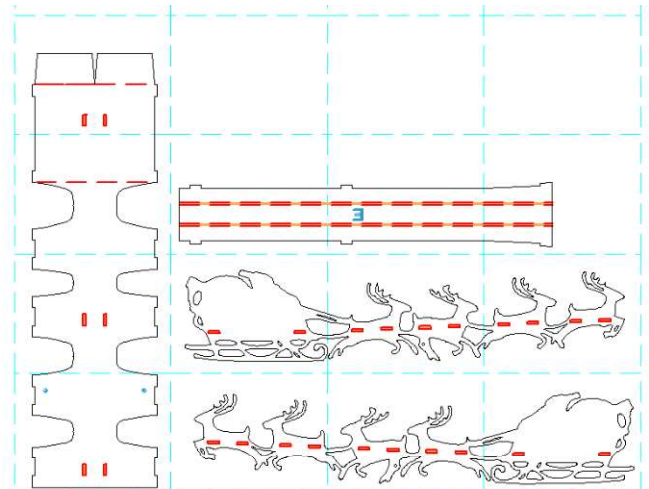
DESCRIPTION	IMPERIAL	METRIC
Length	29.5 in	750 mm
Center of Gravity	6.5 in	165 mm
Wing Span	8.35 in	212 mm
Wing Area	195 in ²	12.6 dm ²
Dry Weight	5.53 oz	157 g
All Up Weight	10.58 oz	300 g
Wing Loading	7.81 oz/ft ²	23.8 g/dm ²
Wing Cube Loading	6.7	

RECCOMENDED SETTINGS

	THROW HI	LOW	EXPO
Ailerons	20°	15°	35%
Elevator	25°	20°	35%
Rudder	0°	0°	35%

RECCOMENDED ELECTRONICS:

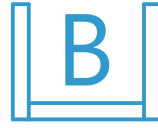
Motor	2204 2300kv
ESC	12-20A
Prop	6045
Servos	2x 9g
Battery	1500mah 3s



FOLD TYPES



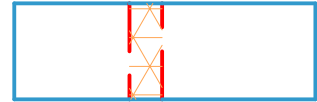
A Fold - (Above)



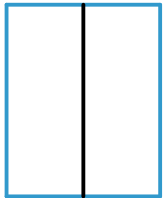
B Fold - (Beside)



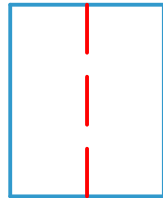
C Fold - (Cover)



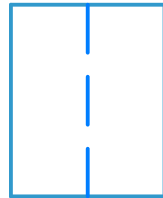
LINE TYPE / COLOR



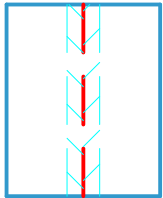
Cut



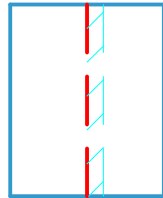
50% Score



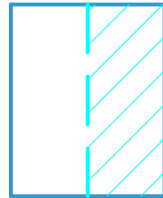
Crease



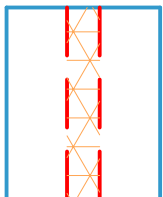
45° Double Bevel



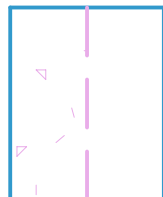
45° Single Bevel



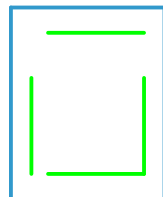
Edge Bevel



Cavity



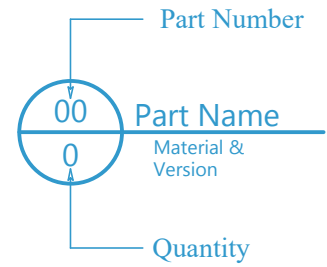
Remove Paper



Reference /Optional



SYMBOLS



Mirrored Part



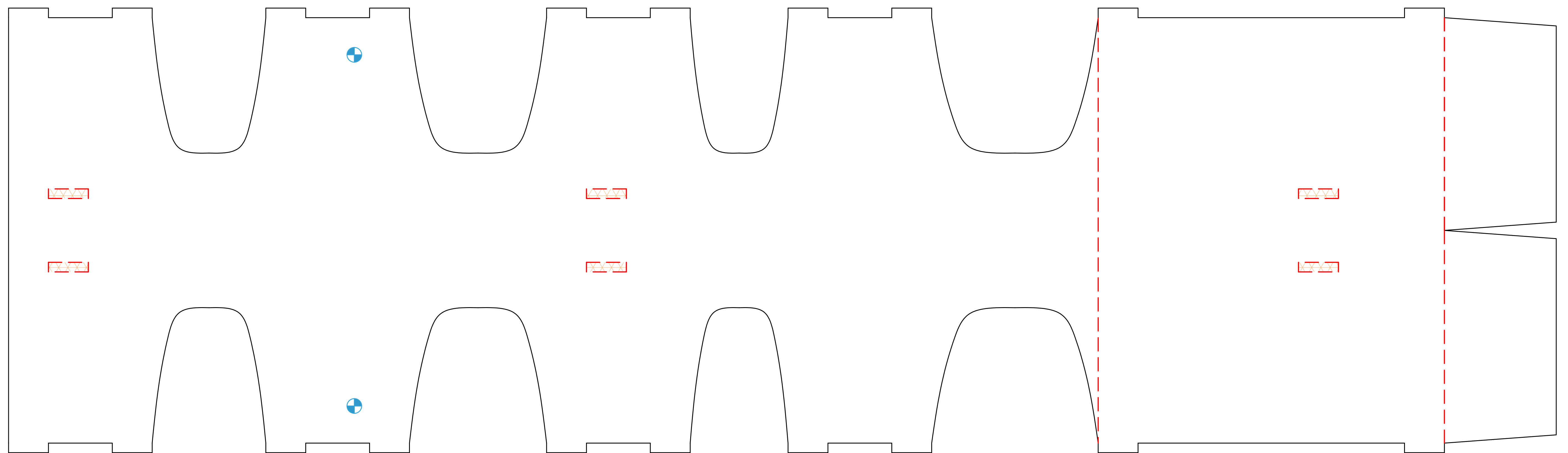
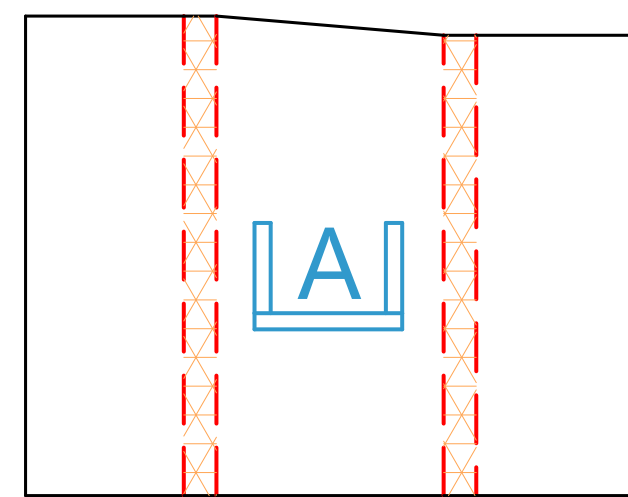
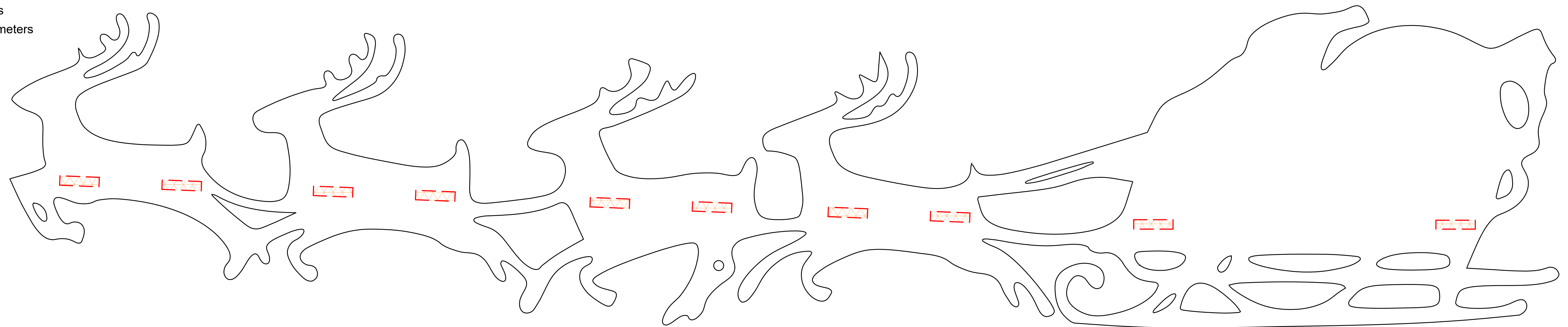
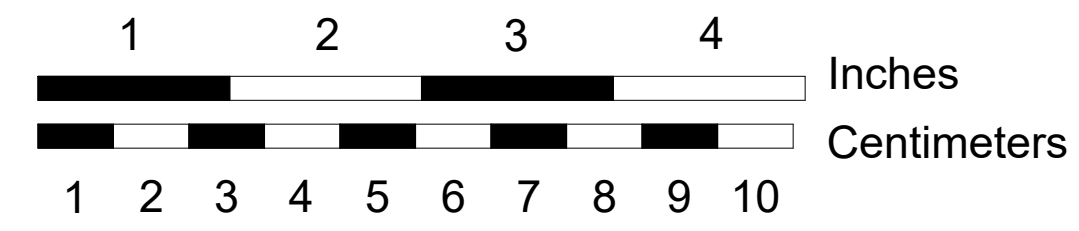
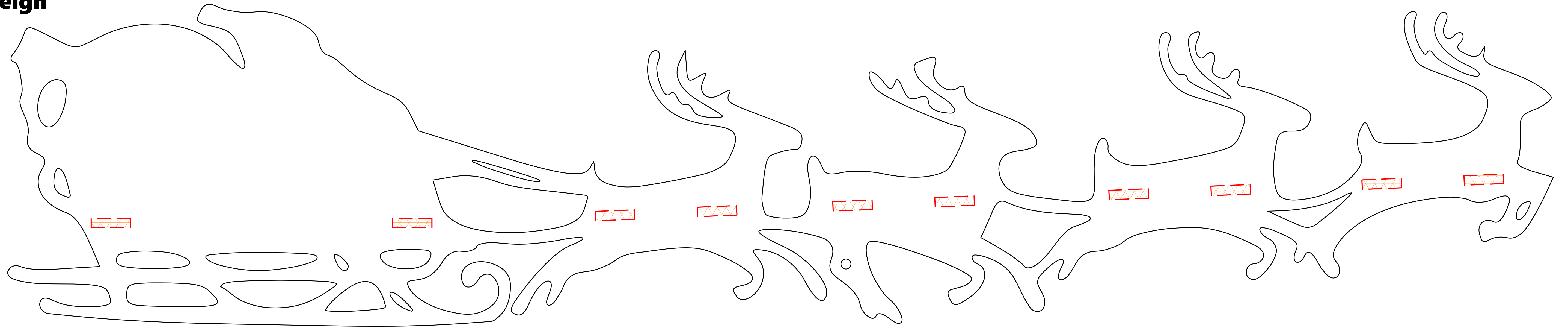
Center of Gravity (CG)

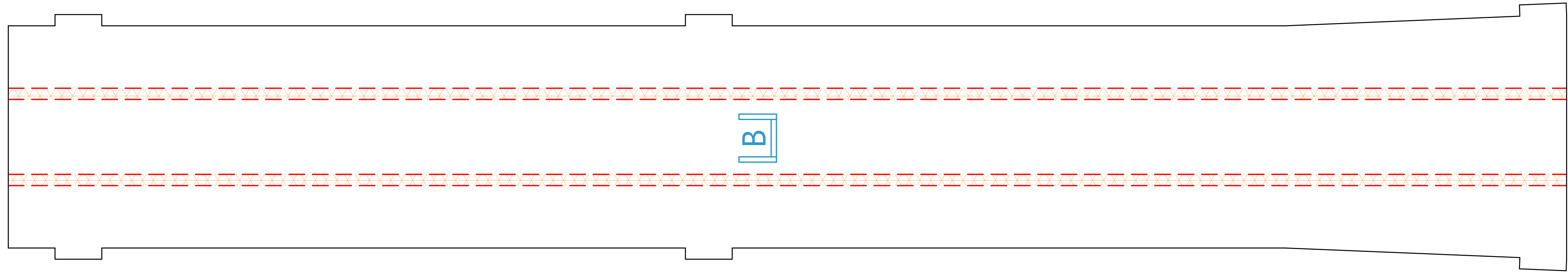


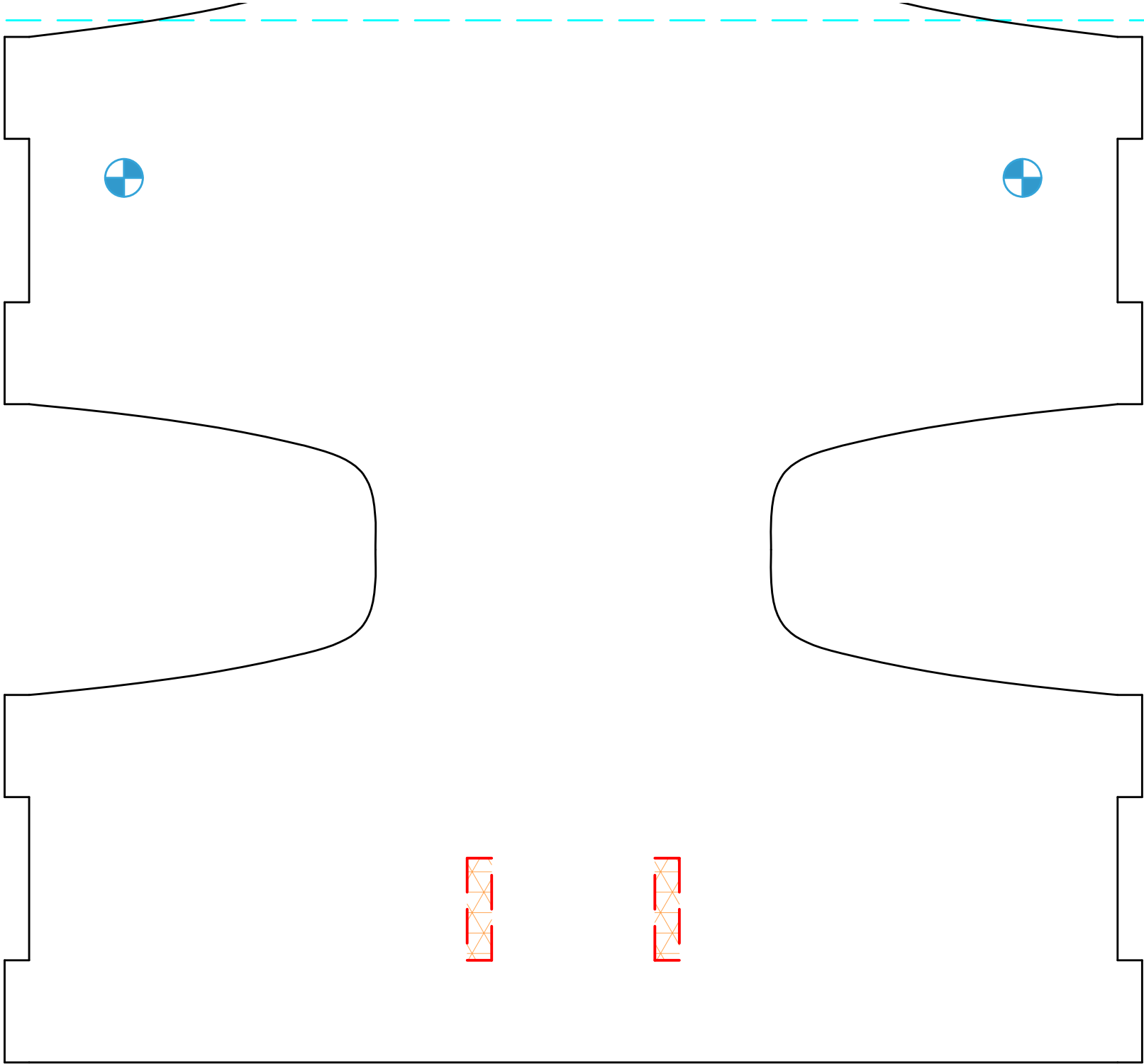
Mighty Mini Sleigh

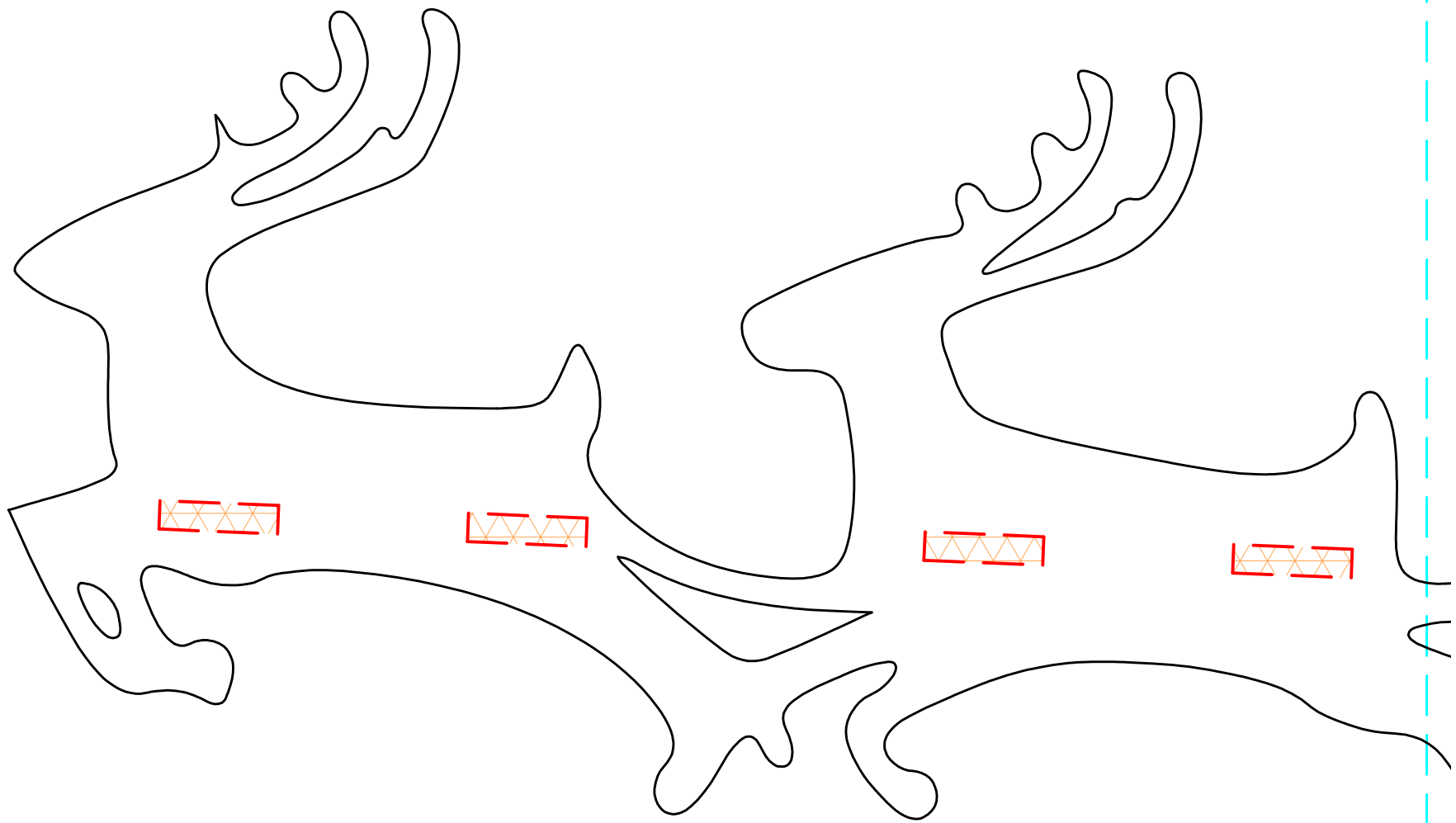
Beta v.1

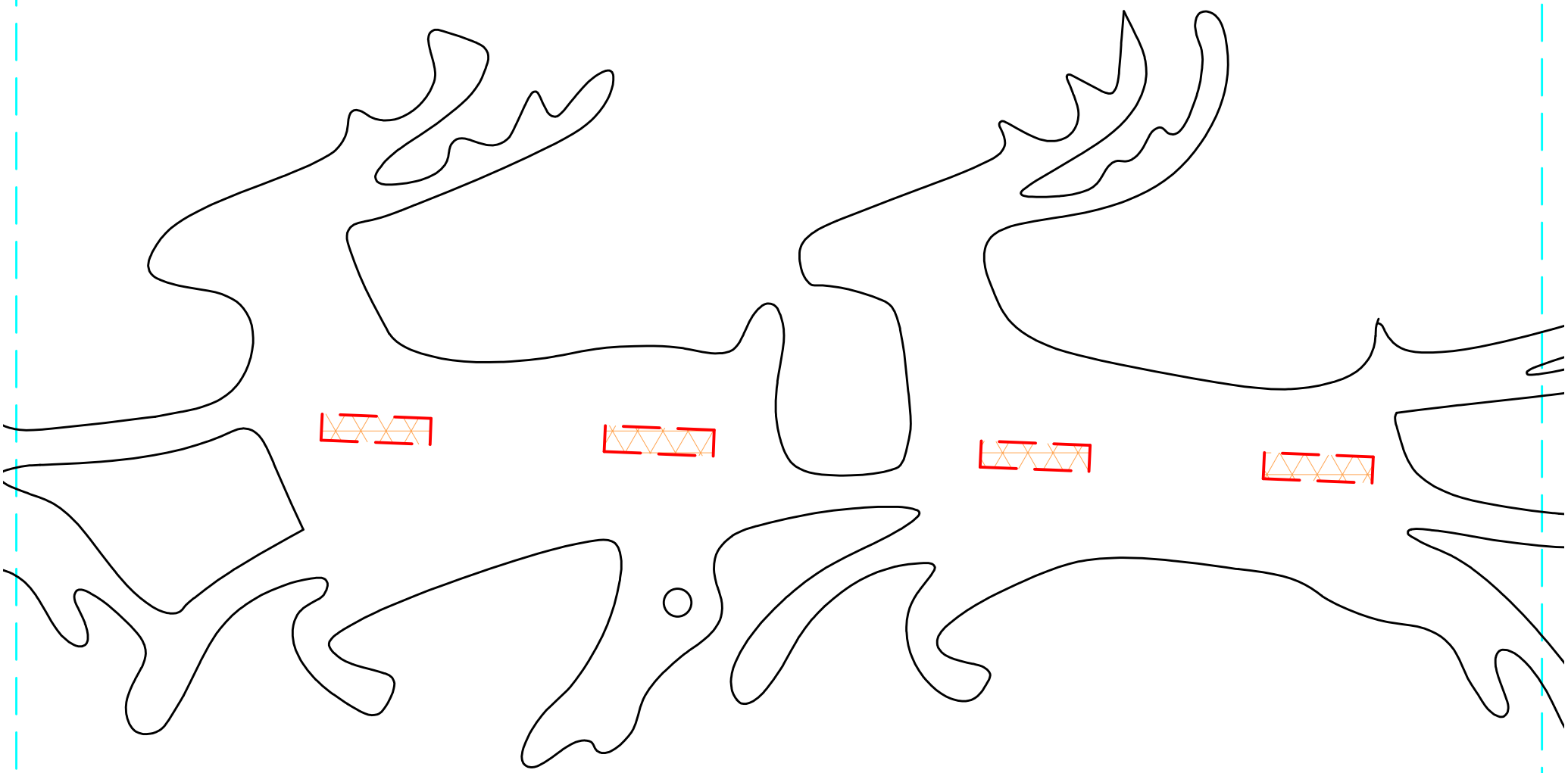
Designed by: Dale Stratton
AKA LocalFiend

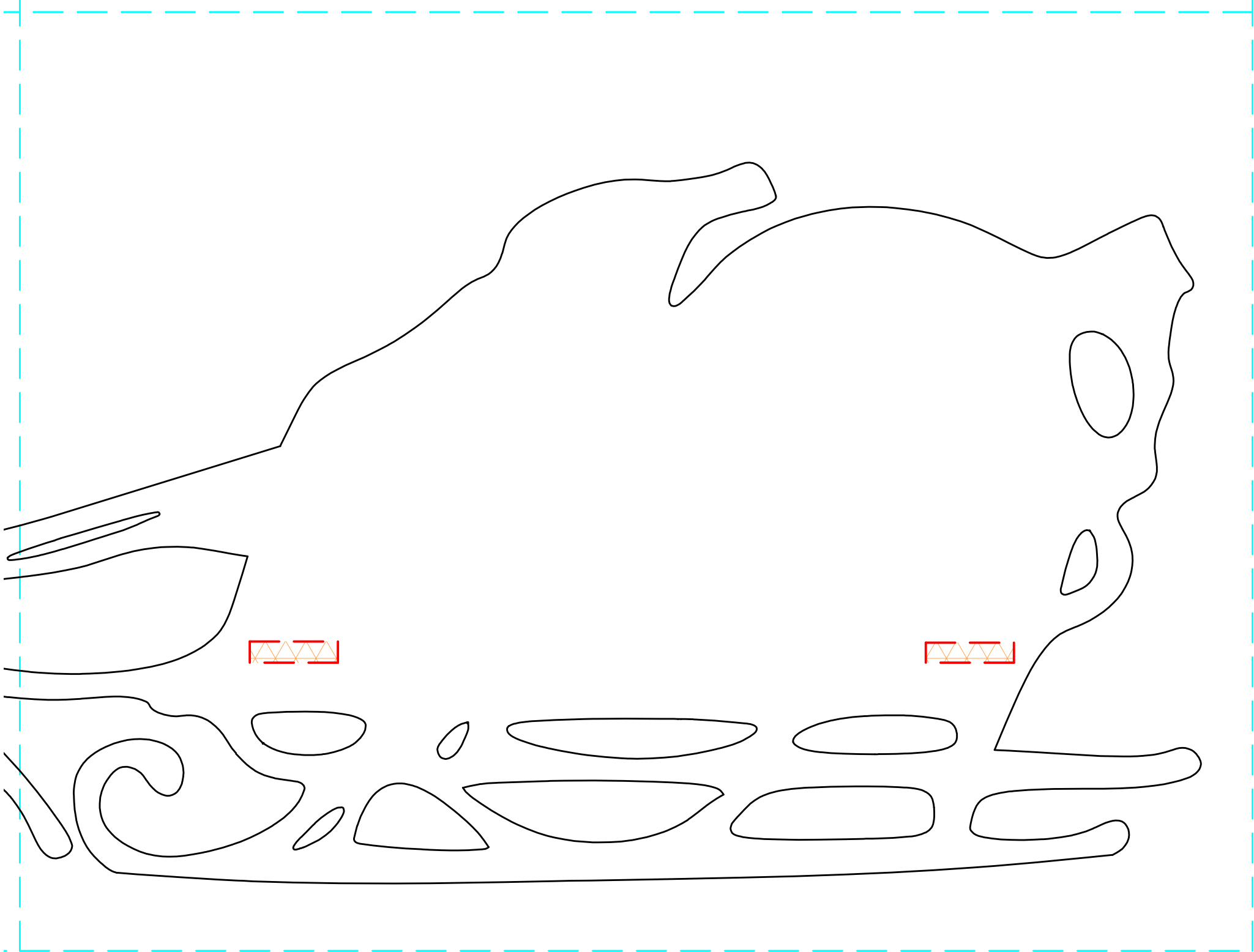


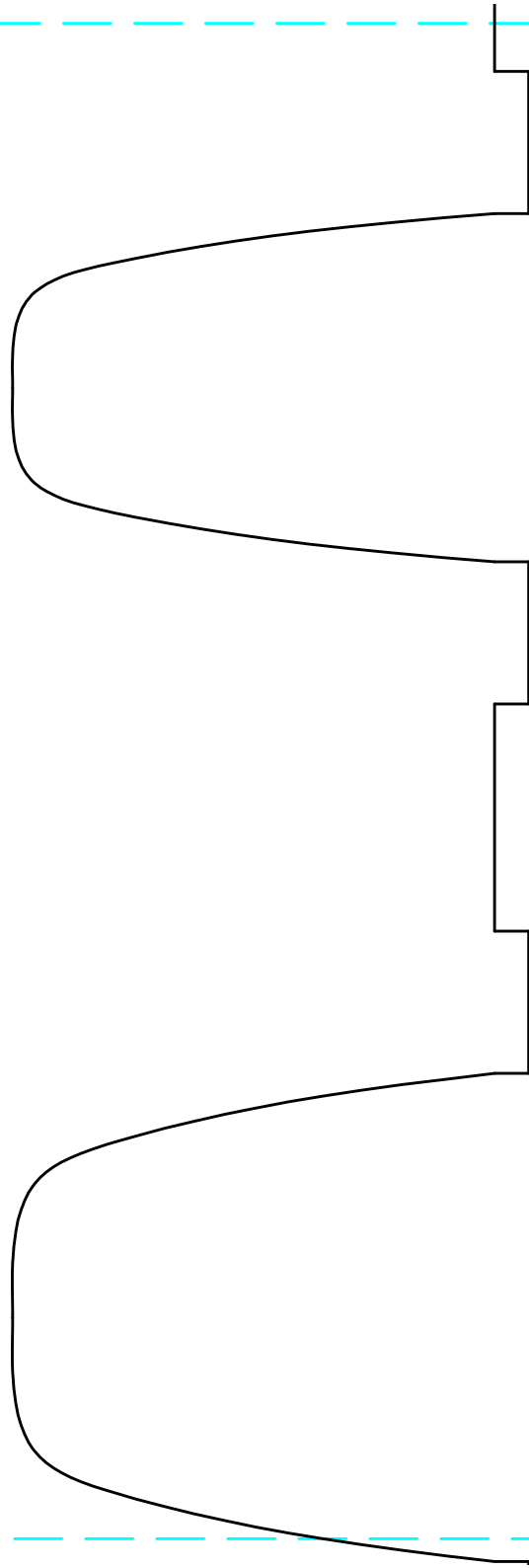
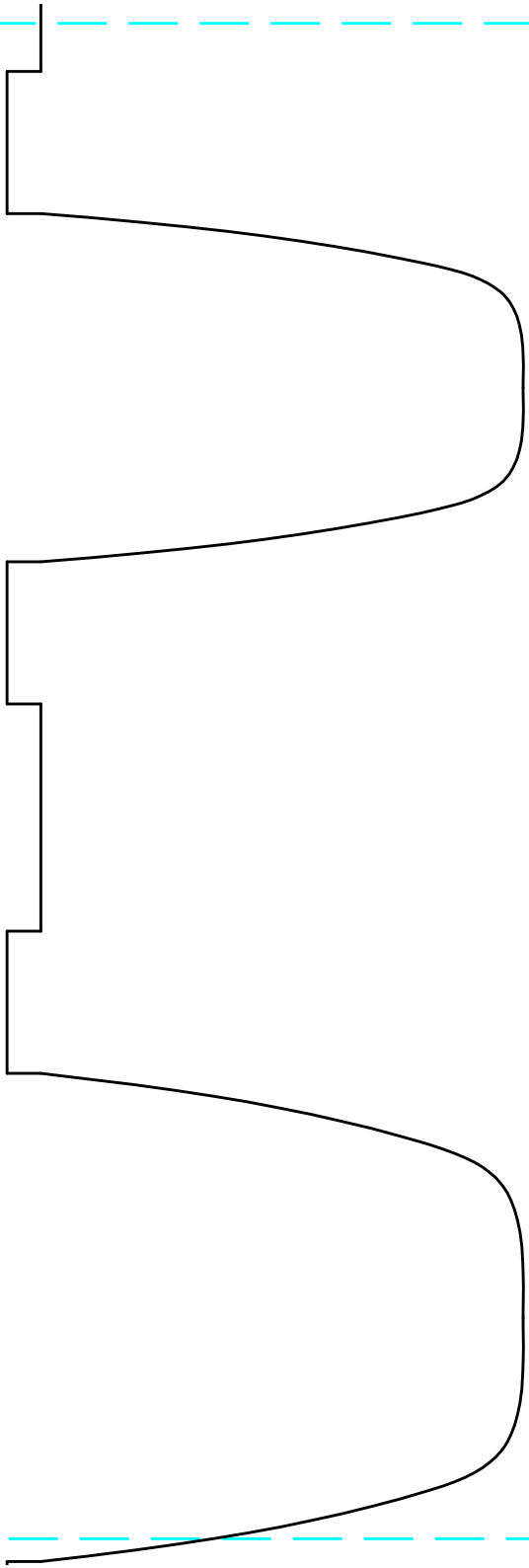


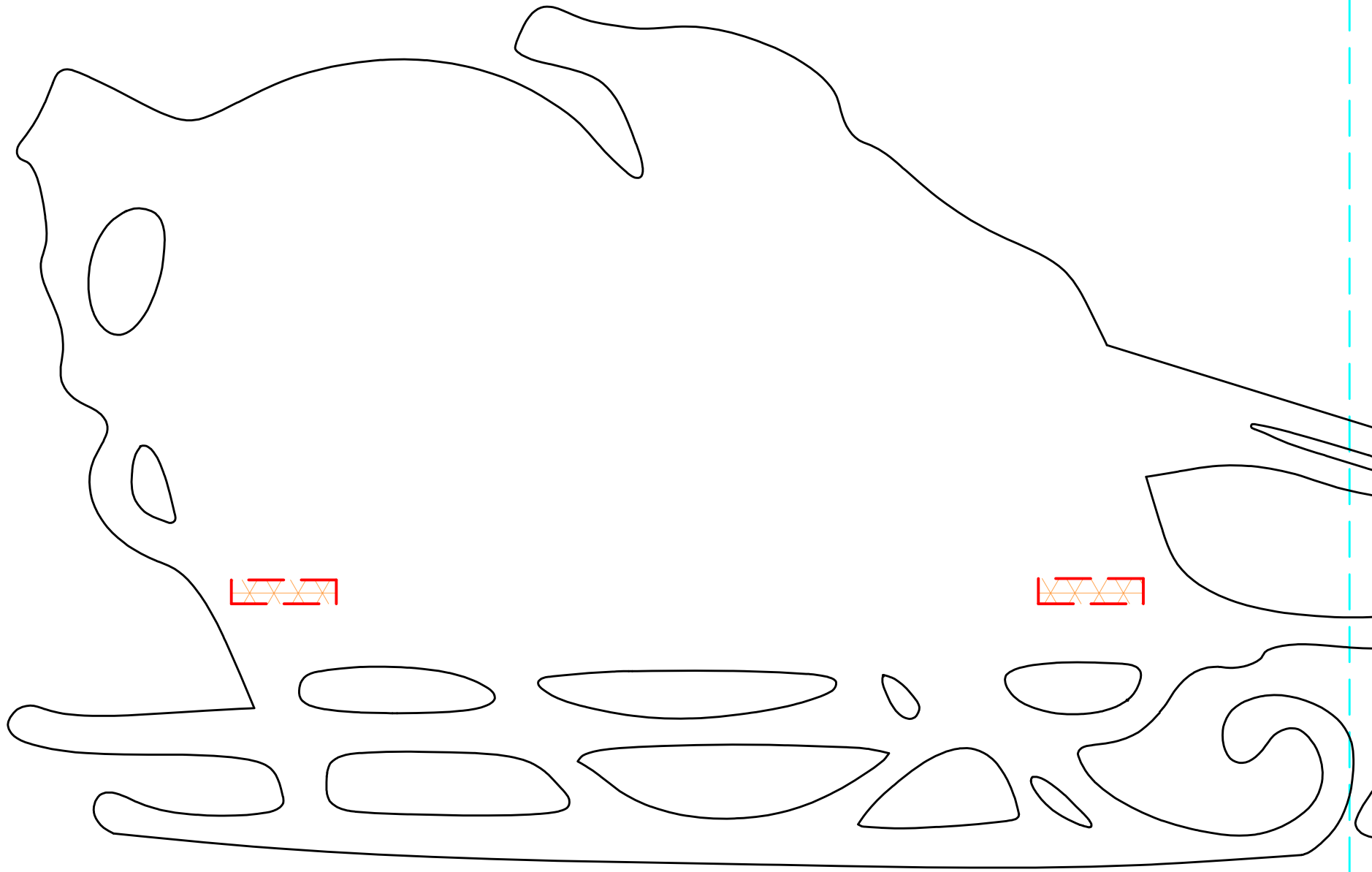


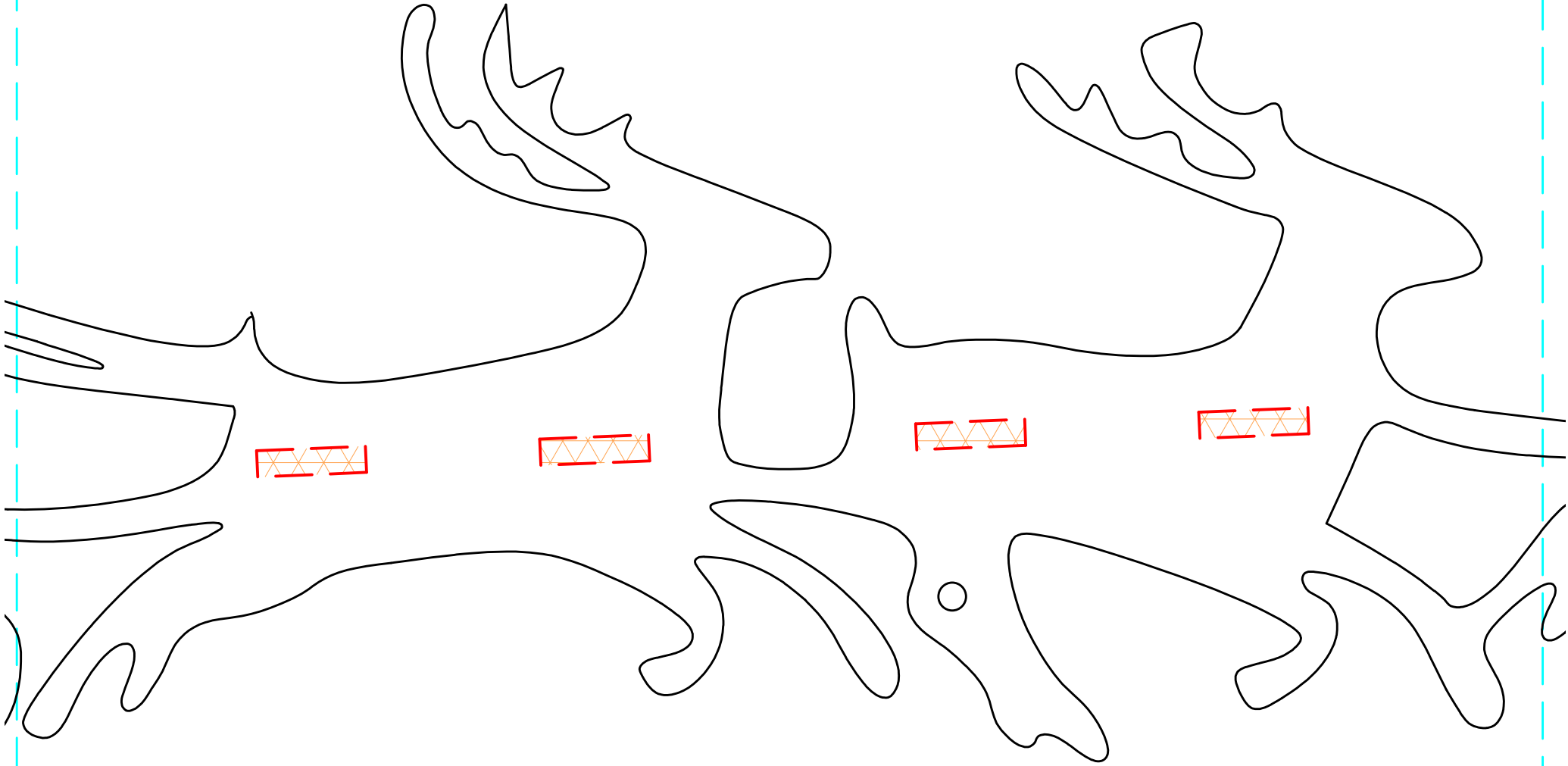
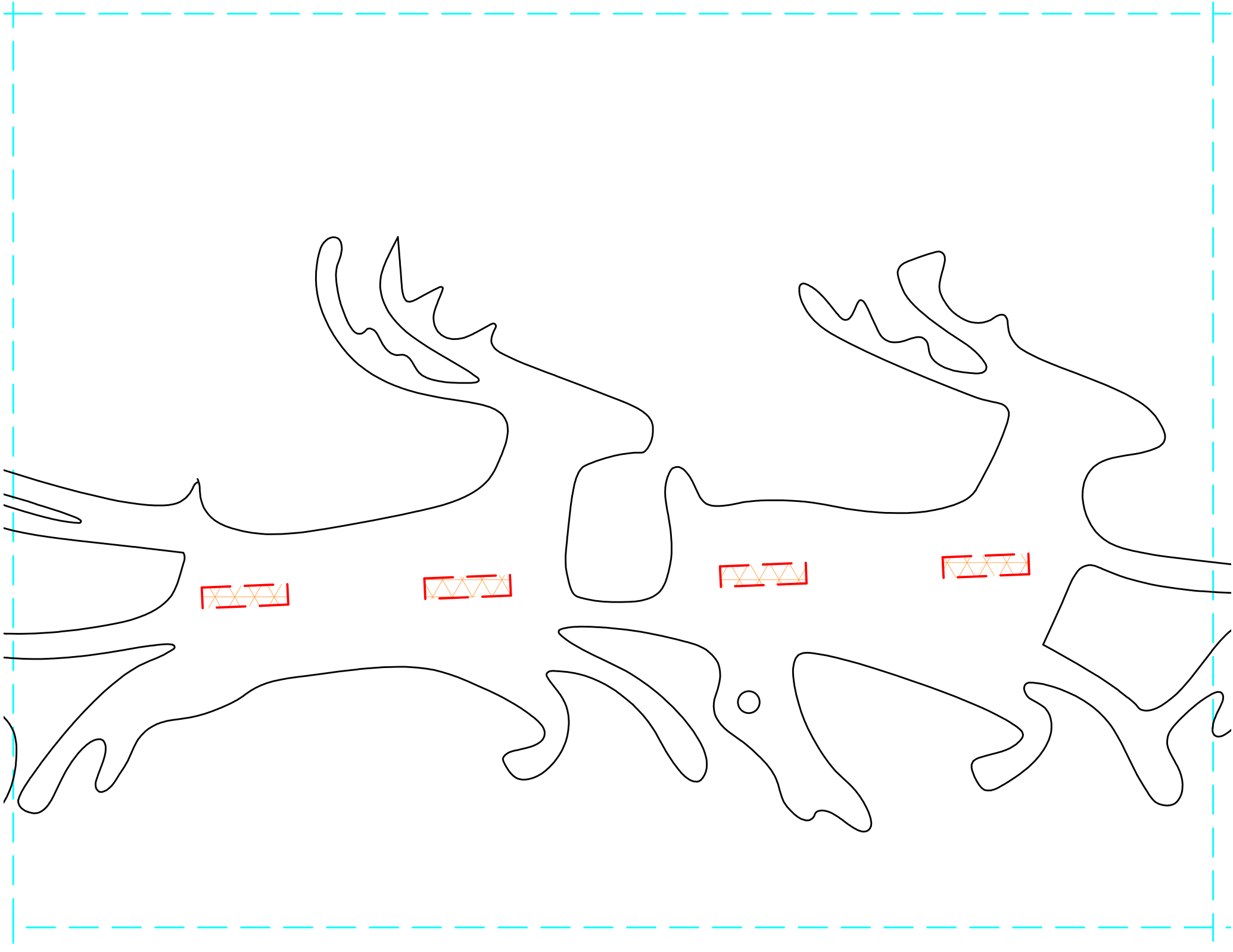


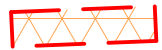
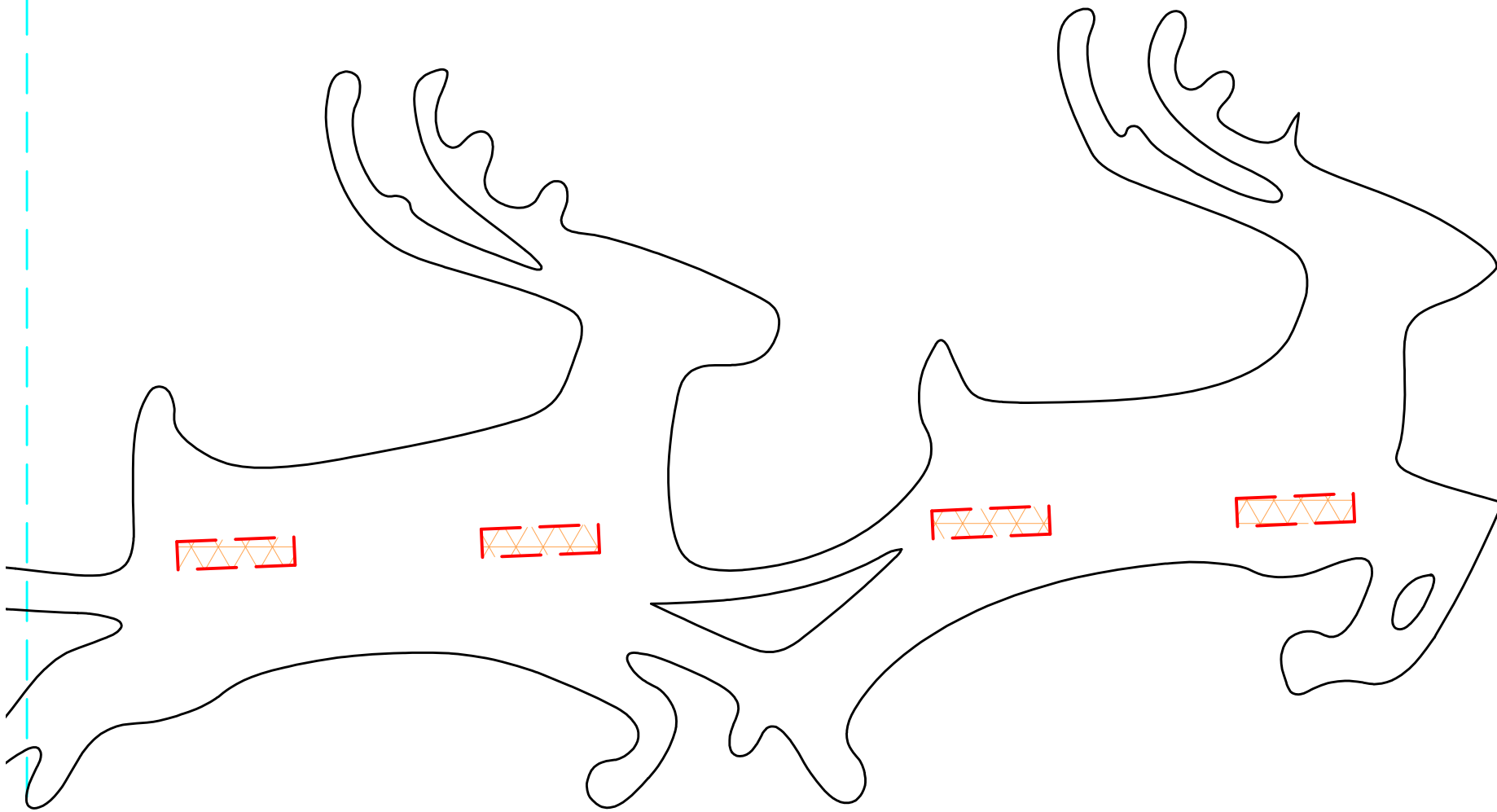
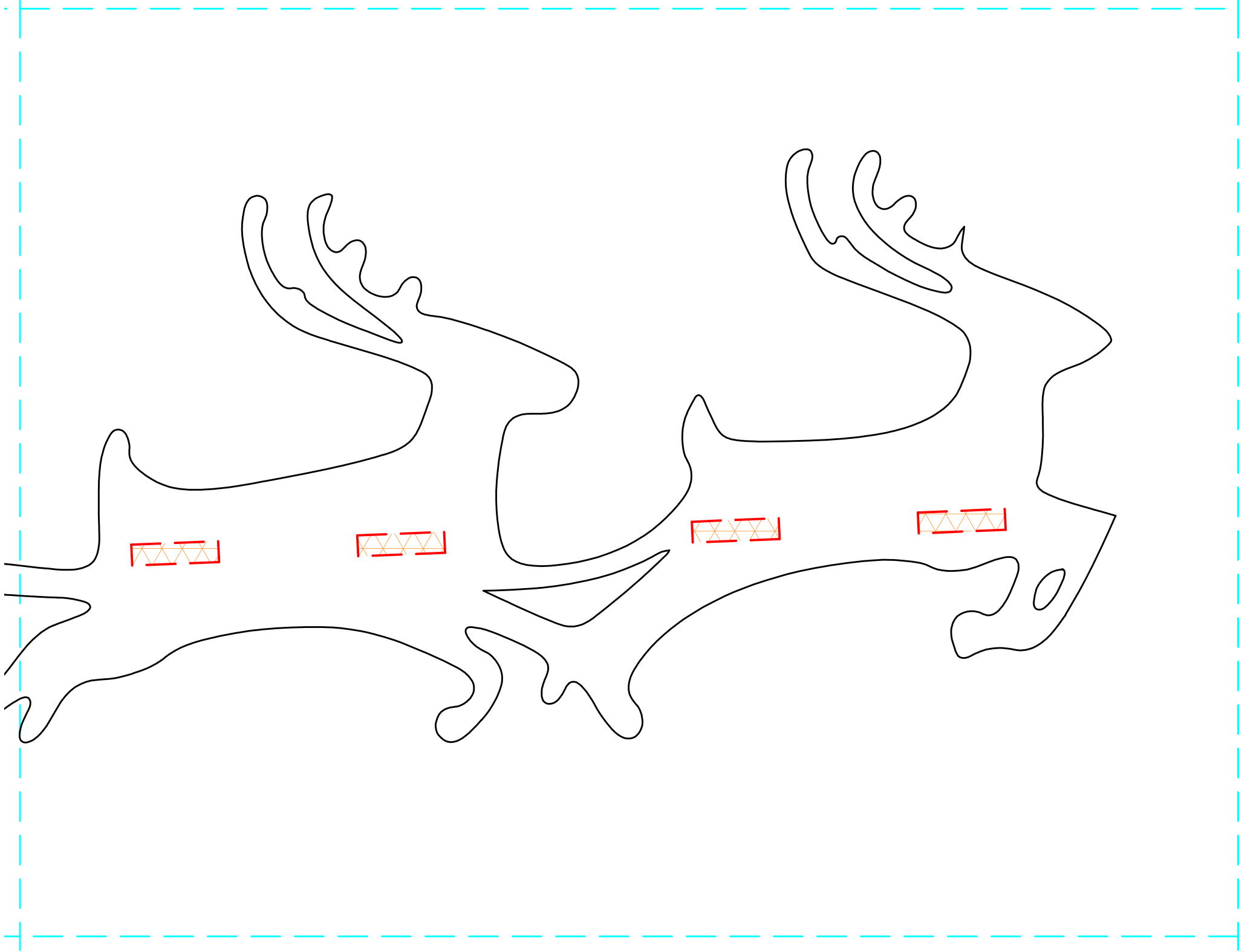


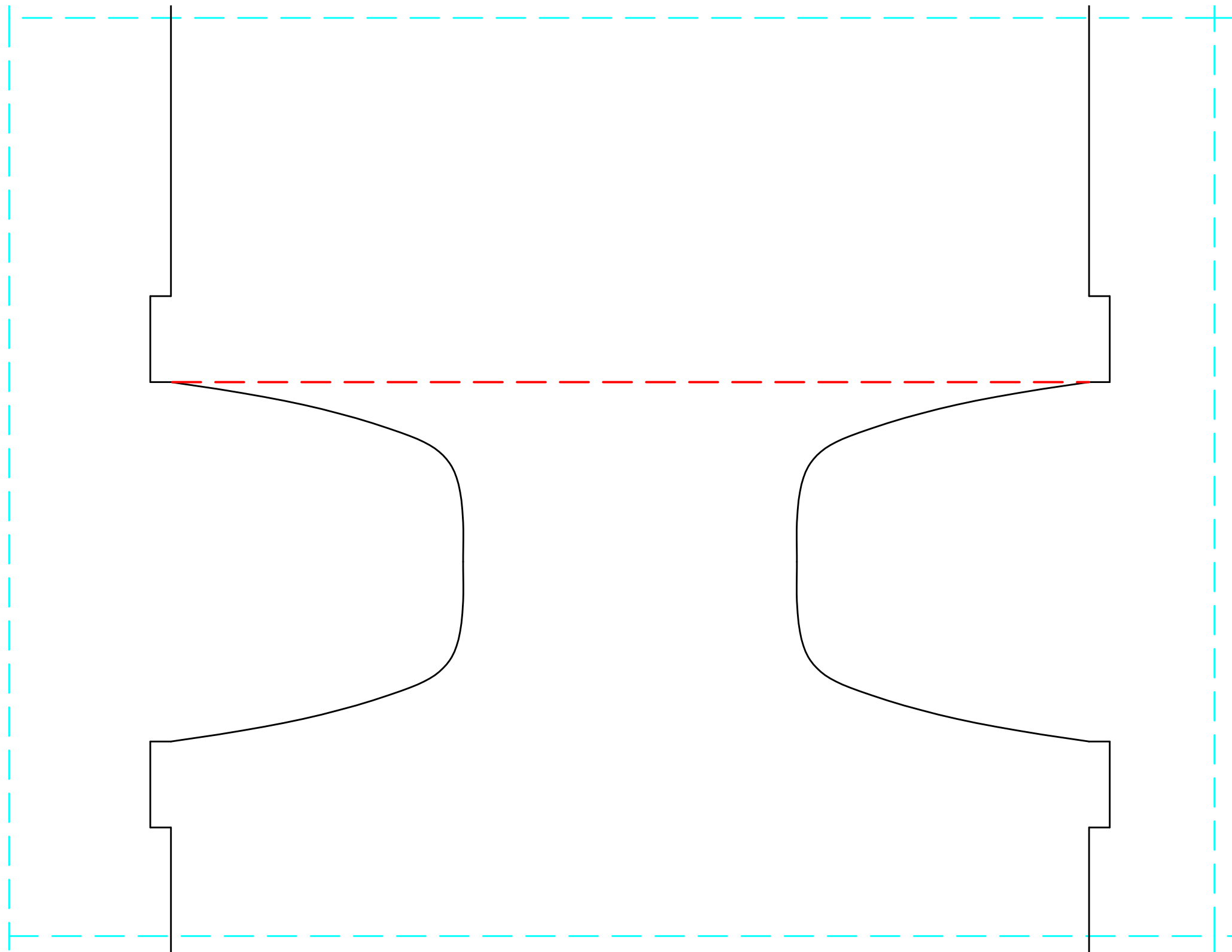


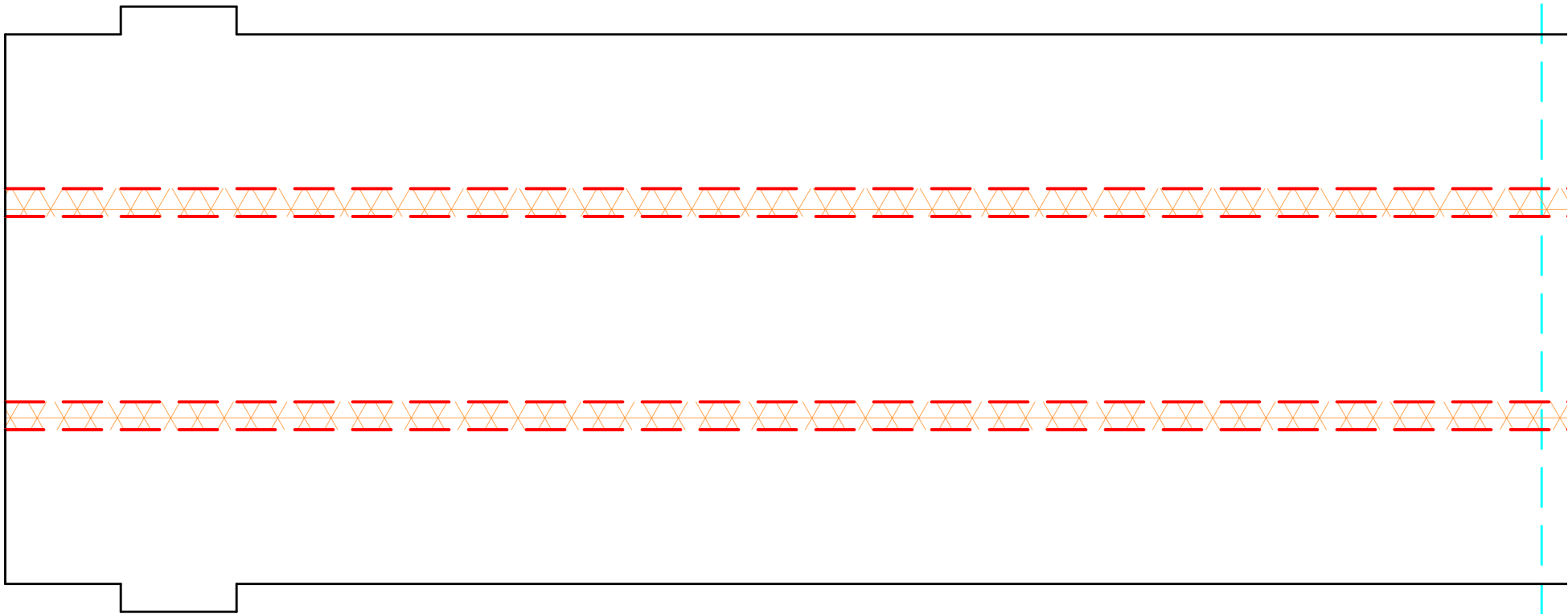












The image shows a technical drawing of a rectangular part. The part is defined by a solid black line with chamfered corners. A central hole is indicated by two horizontal dashed lines, one red and one orange, with a cross-hatch pattern. A blue bracket labeled 'B' is positioned between these two dashed lines, indicating the diameter of the hole. The entire drawing is enclosed within a cyan dashed rectangular border.

B

