

└

└

└







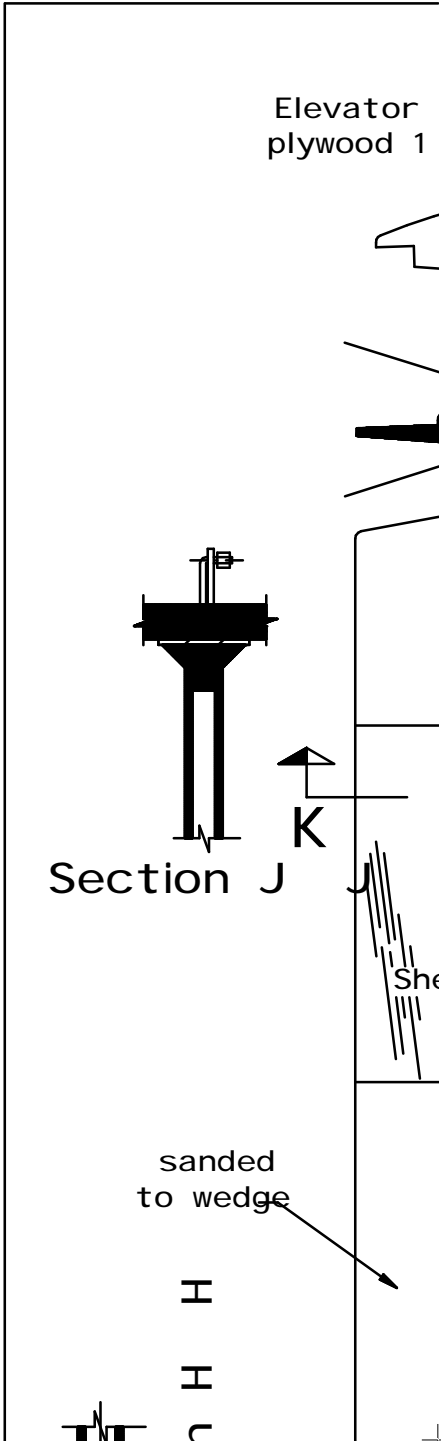


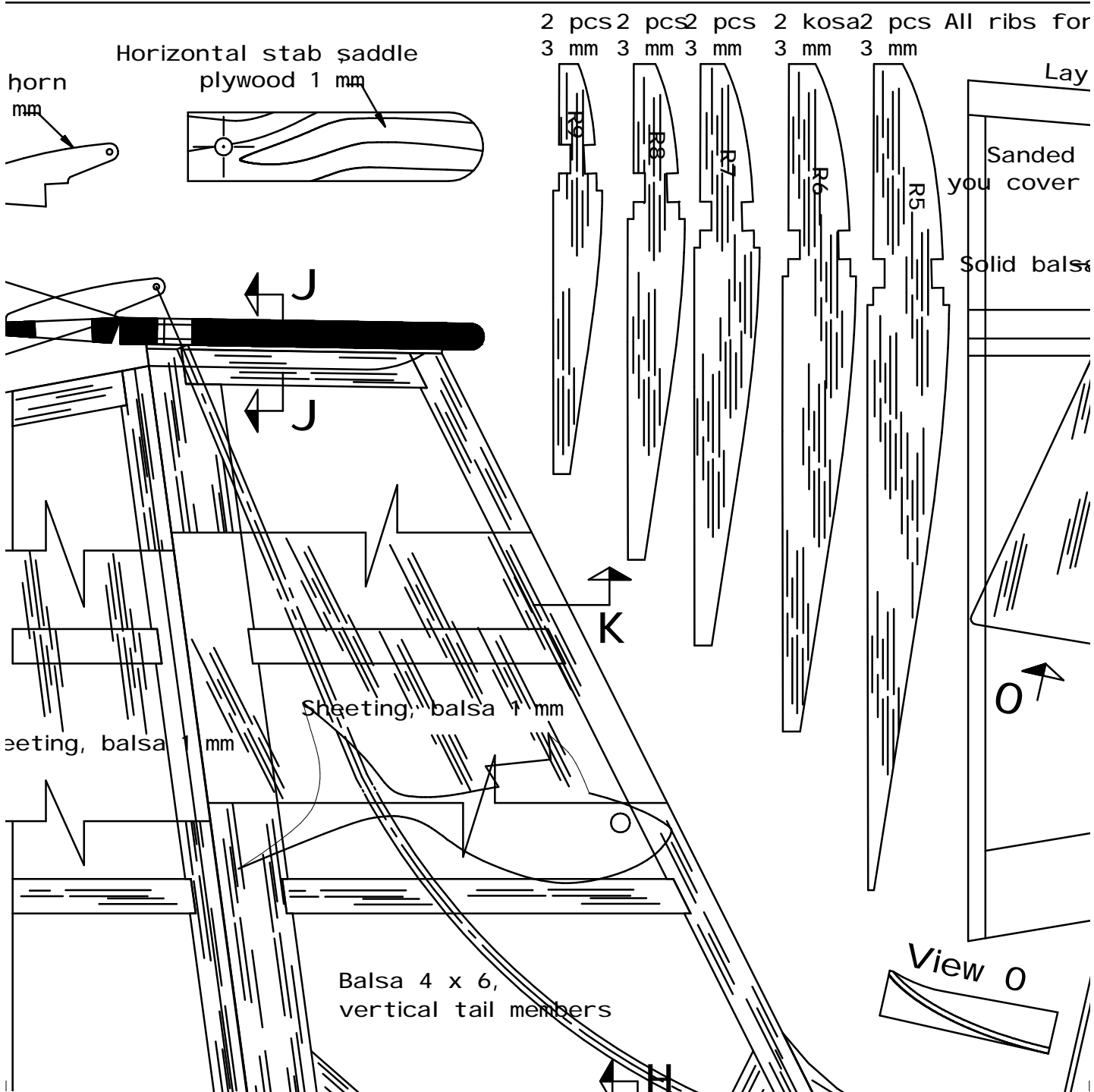


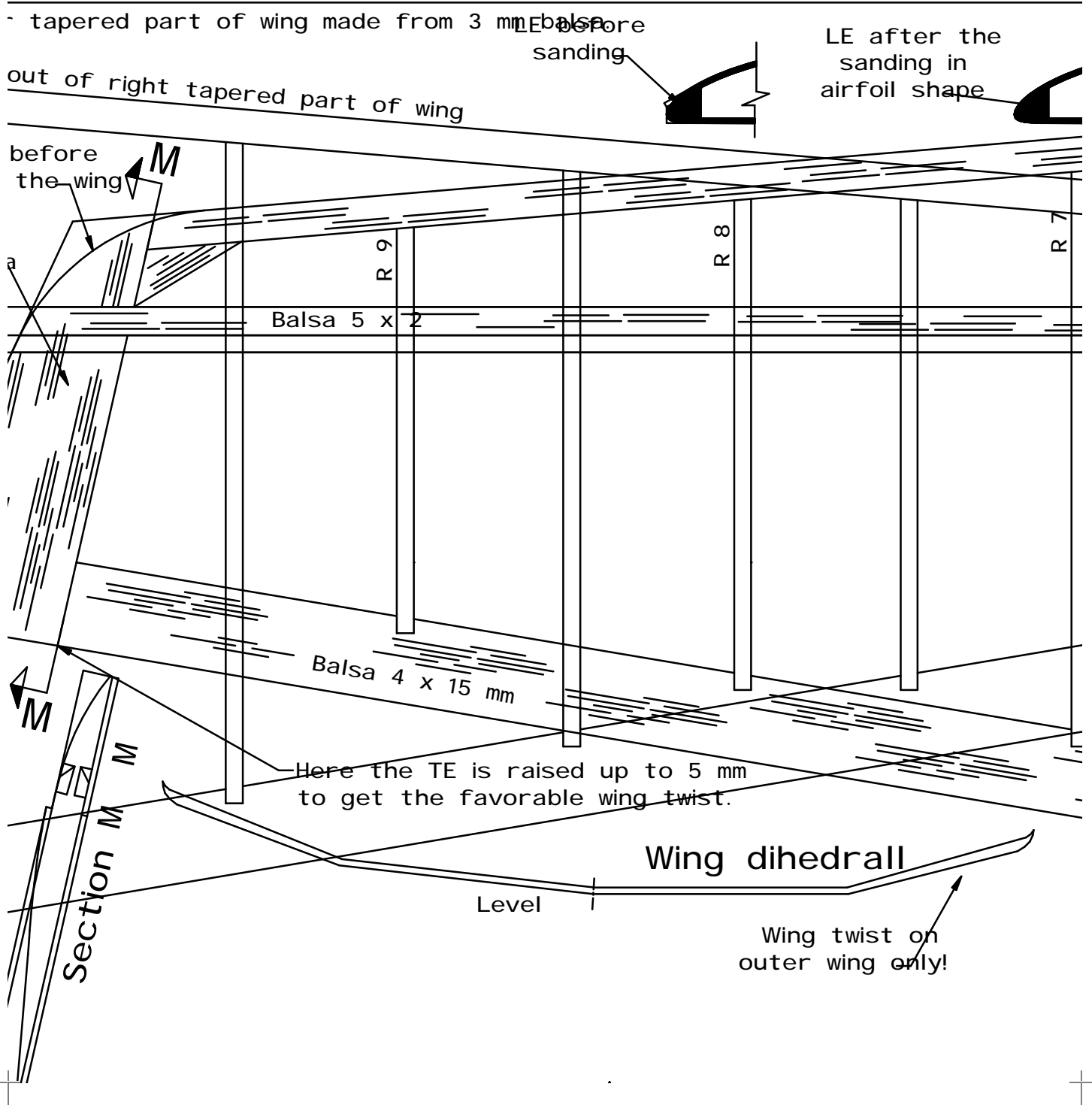
└

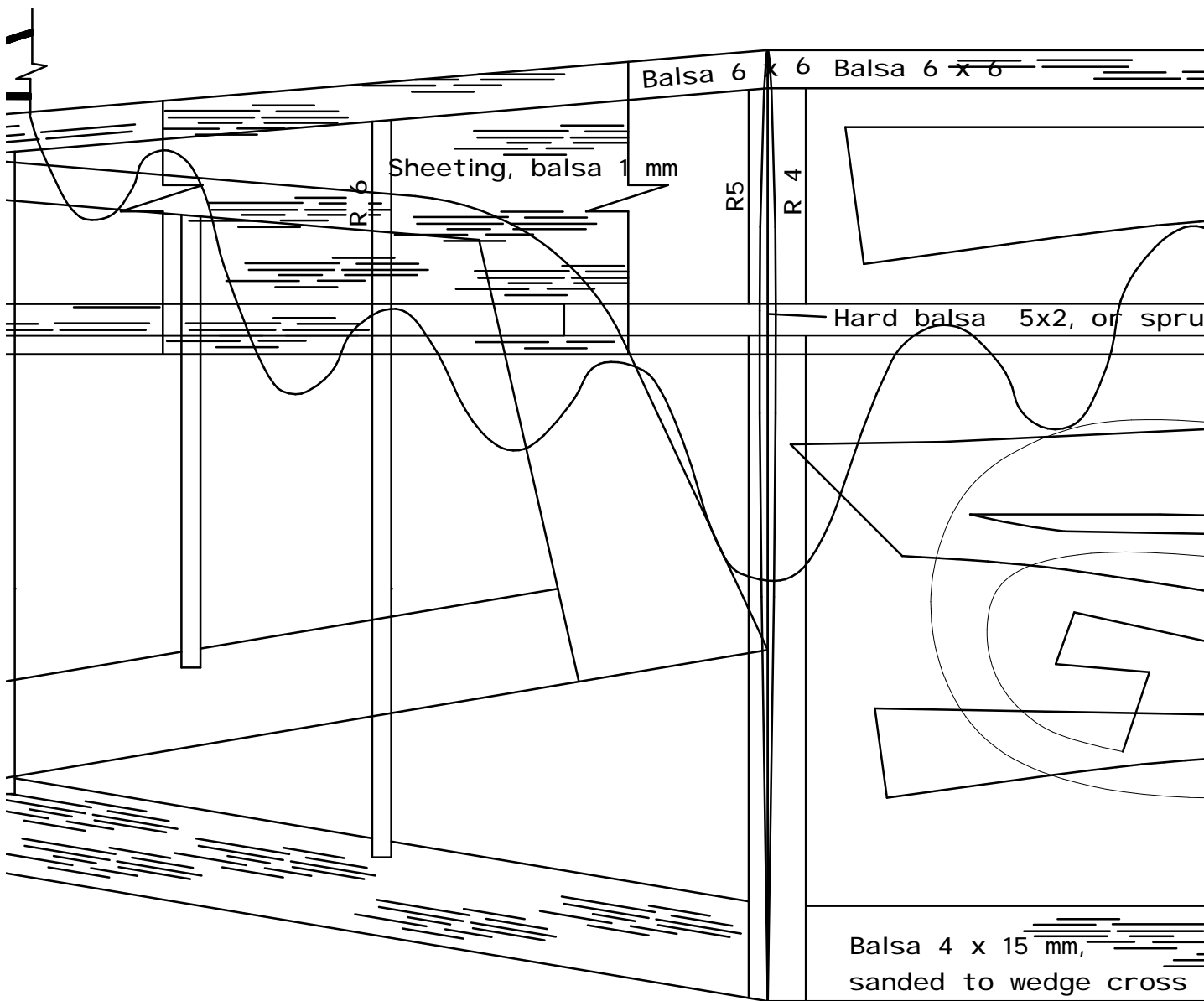
+

└









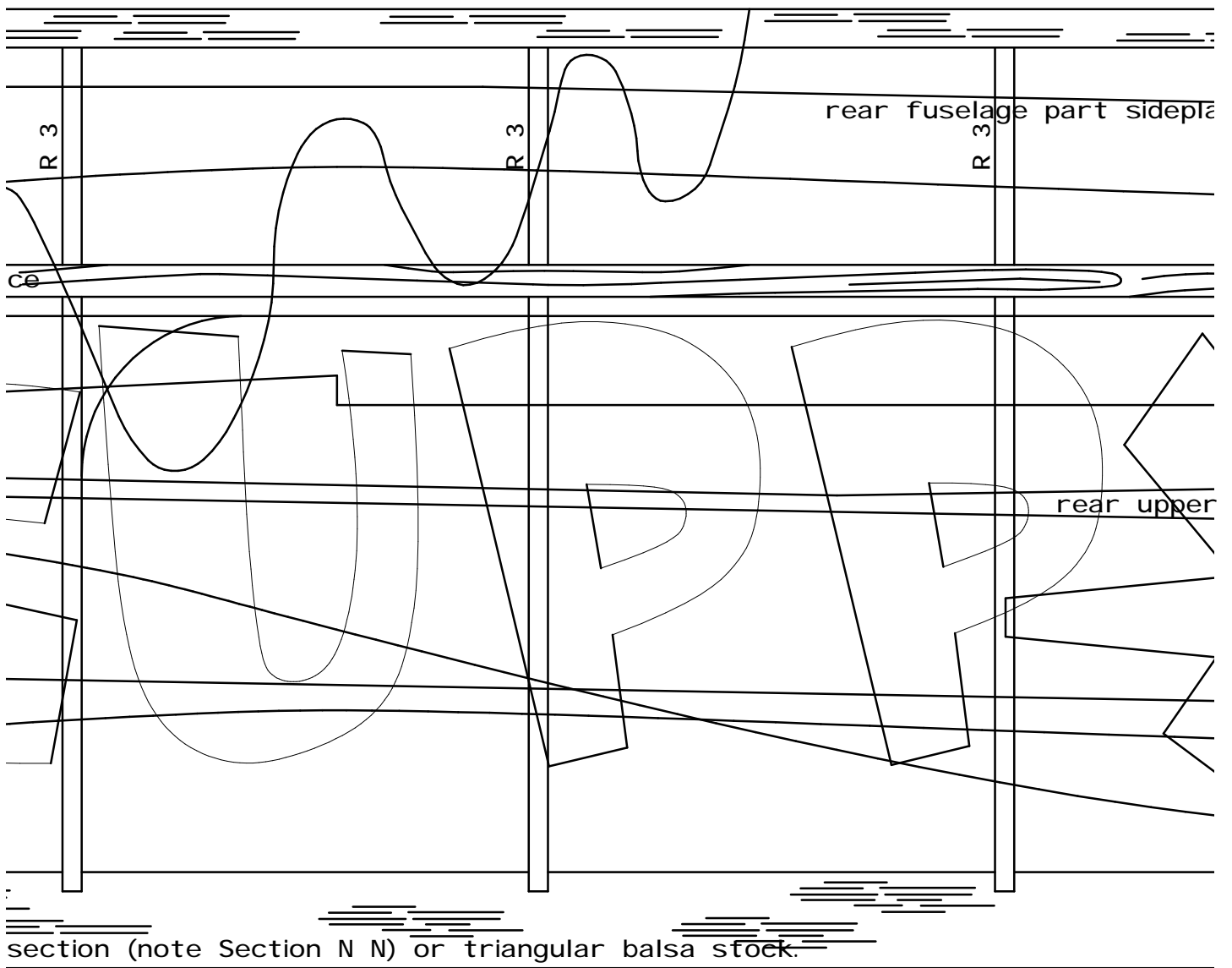
Rear attachment
of the wing

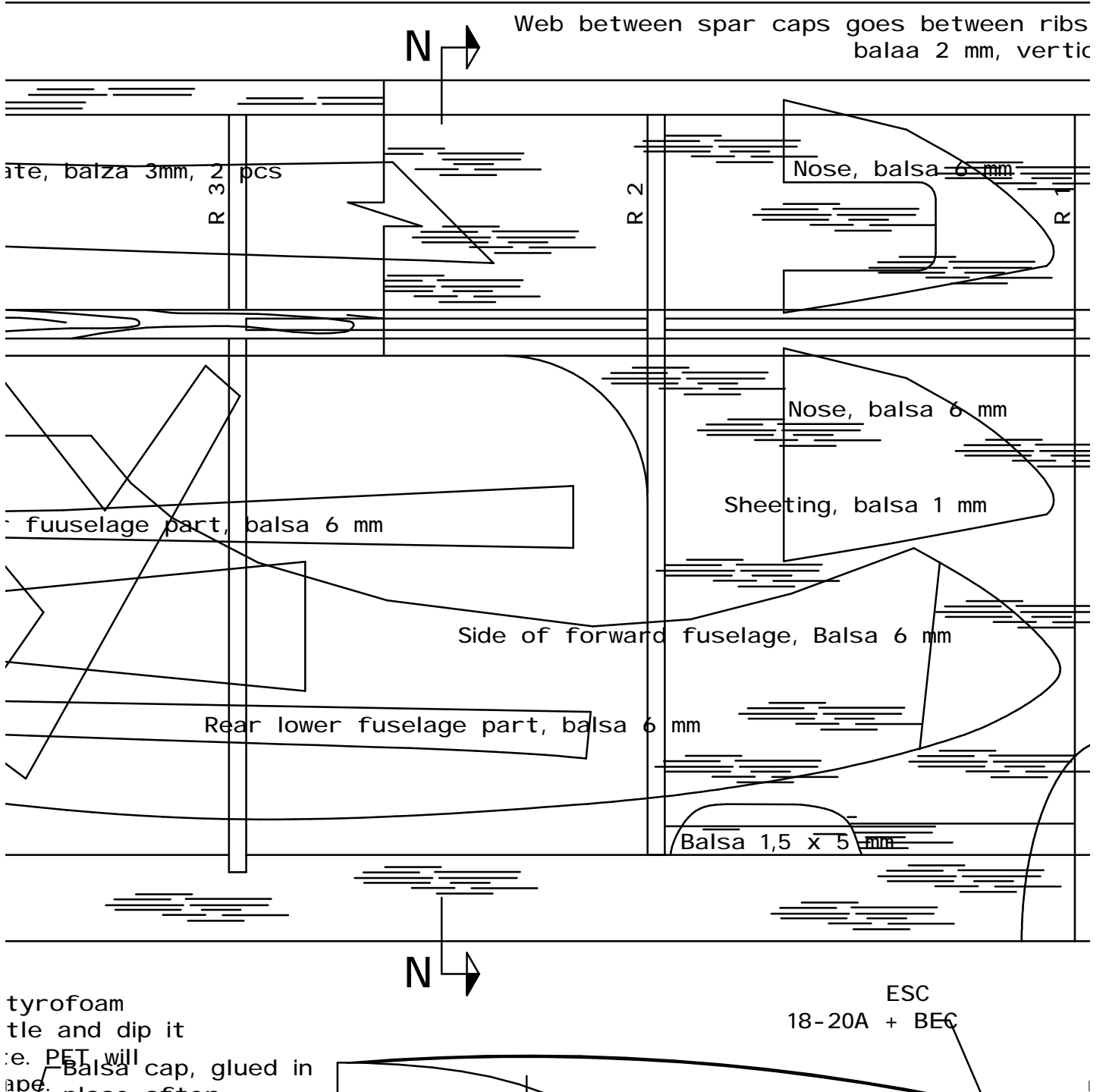
Plastic bolt

Cut the bolt to proper length

A F



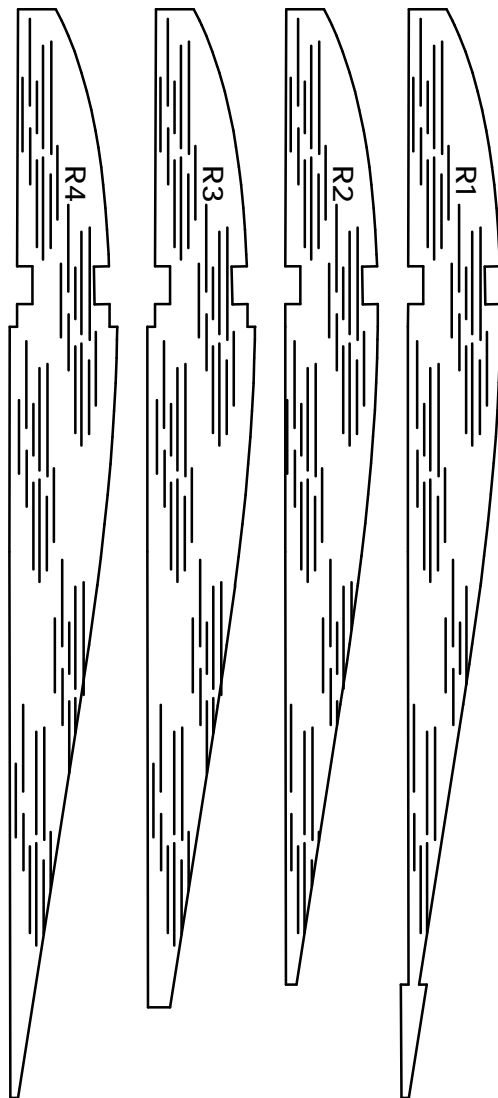
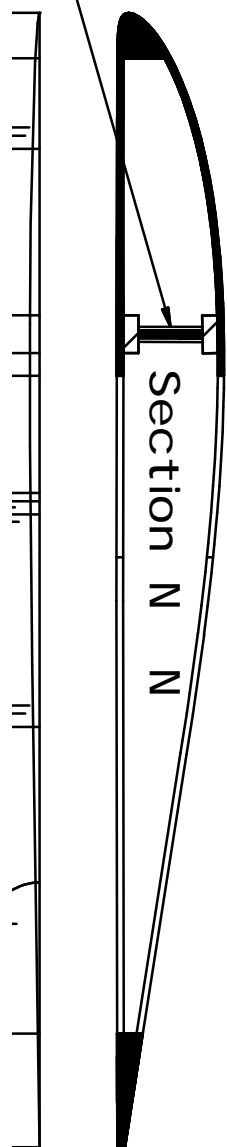




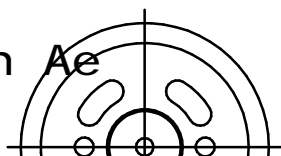
1 & 2, and 2 & 3,
cal-grain!

All wing ribs made from balsa.

2 pcs	8 pcs	2 pcs	2 pcs
6 mm	3 mm	3 mm	6 mm



Section Ae

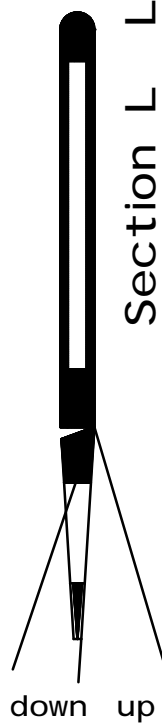




Section



F

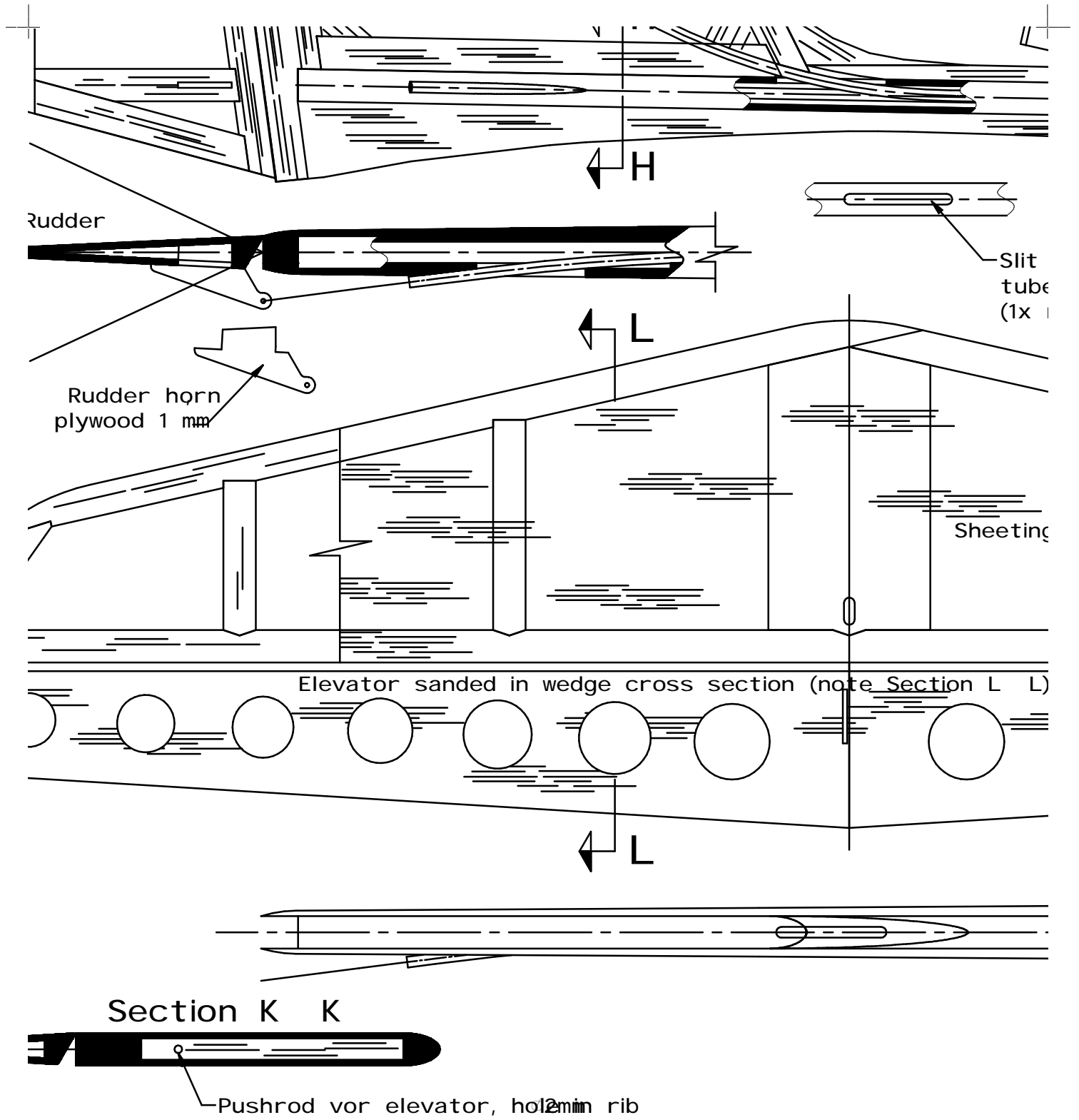


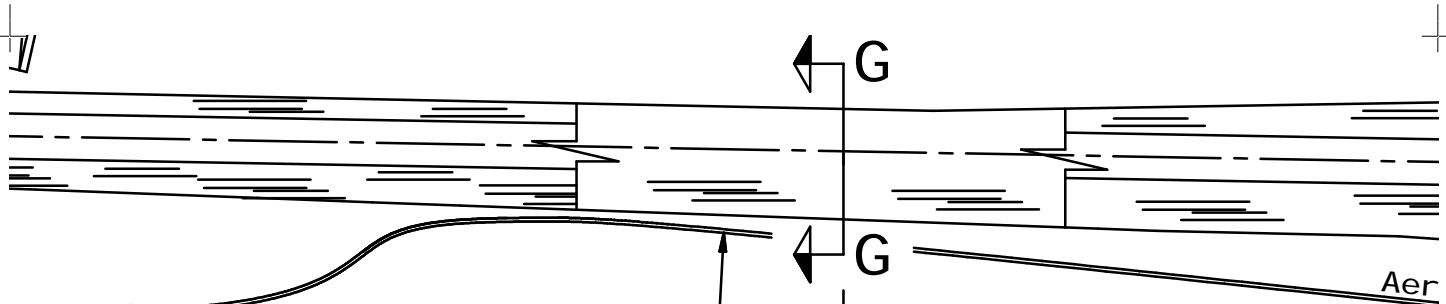
Section L L



Rudder



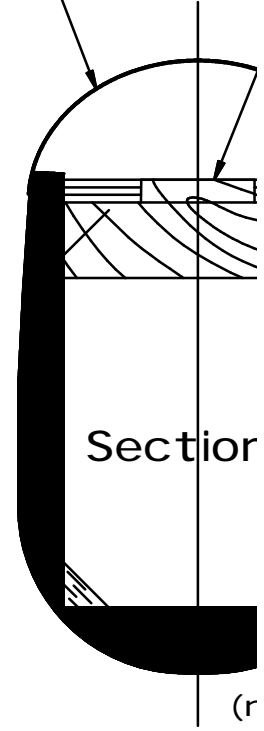
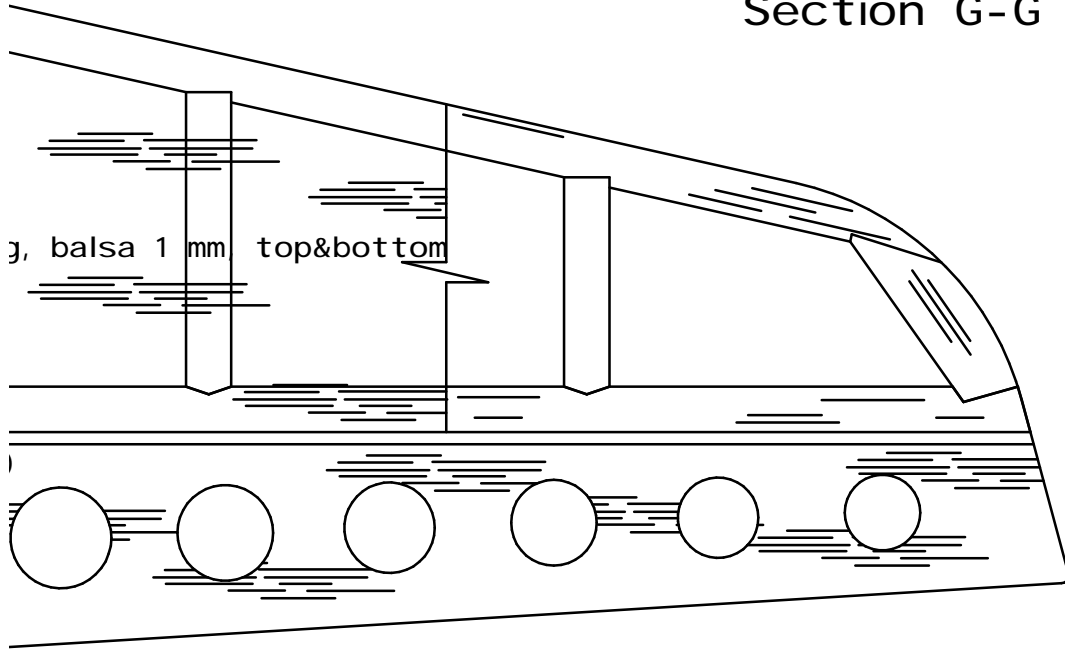




opening in carbon
 3, for exit of pushrods
 rudder, 1x elevator

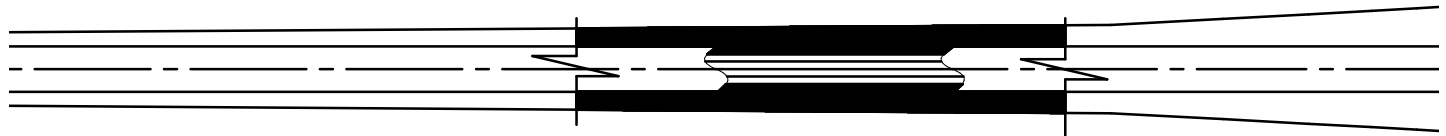
Transparent plastic canopy, made from PET bottle

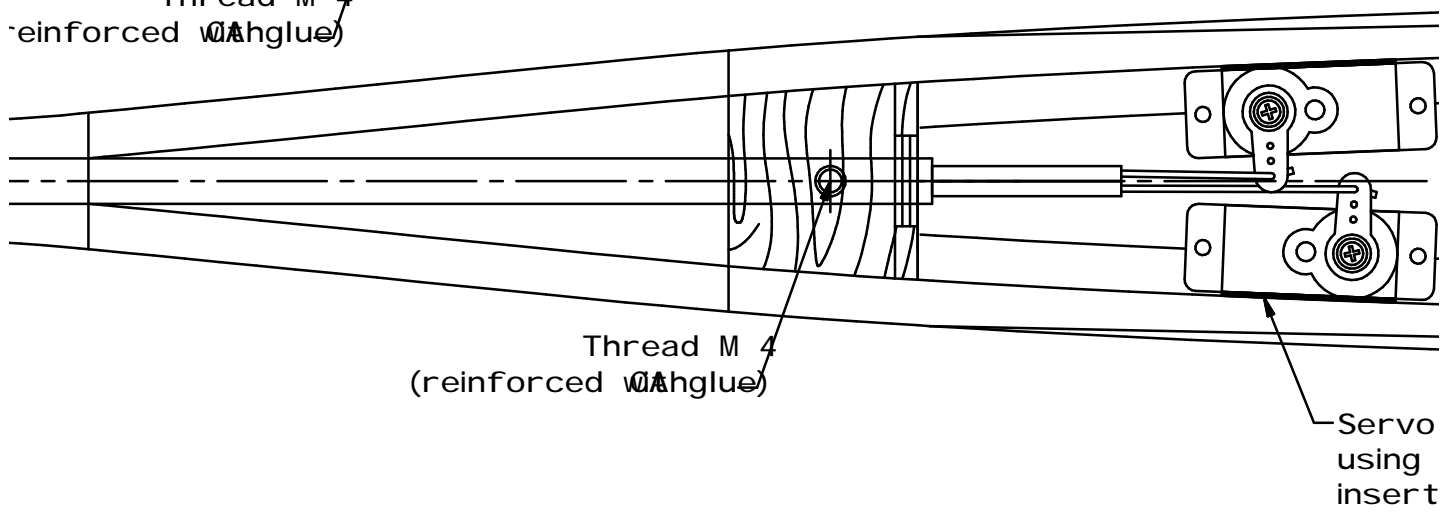
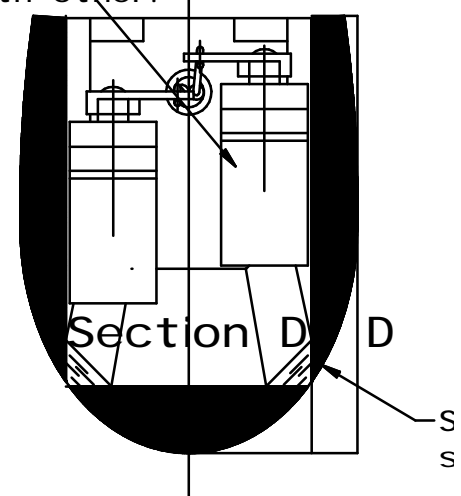
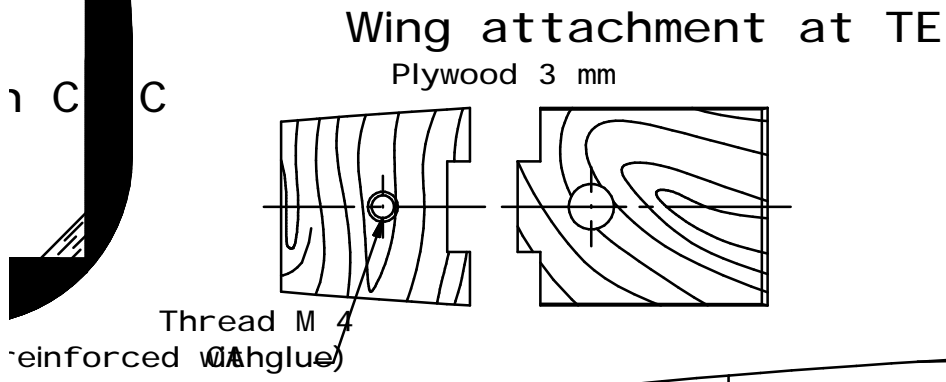
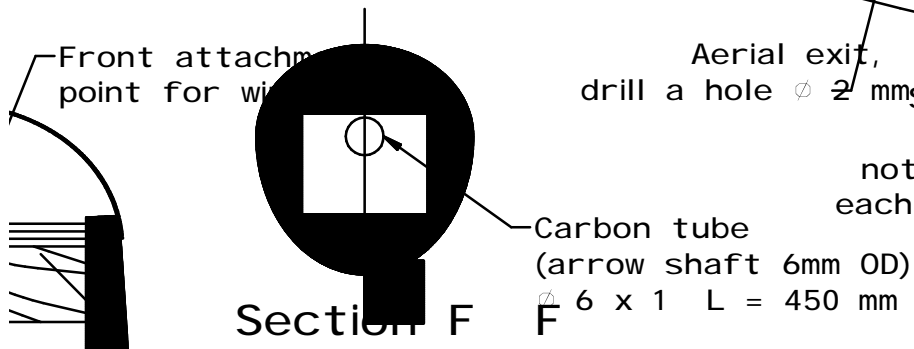
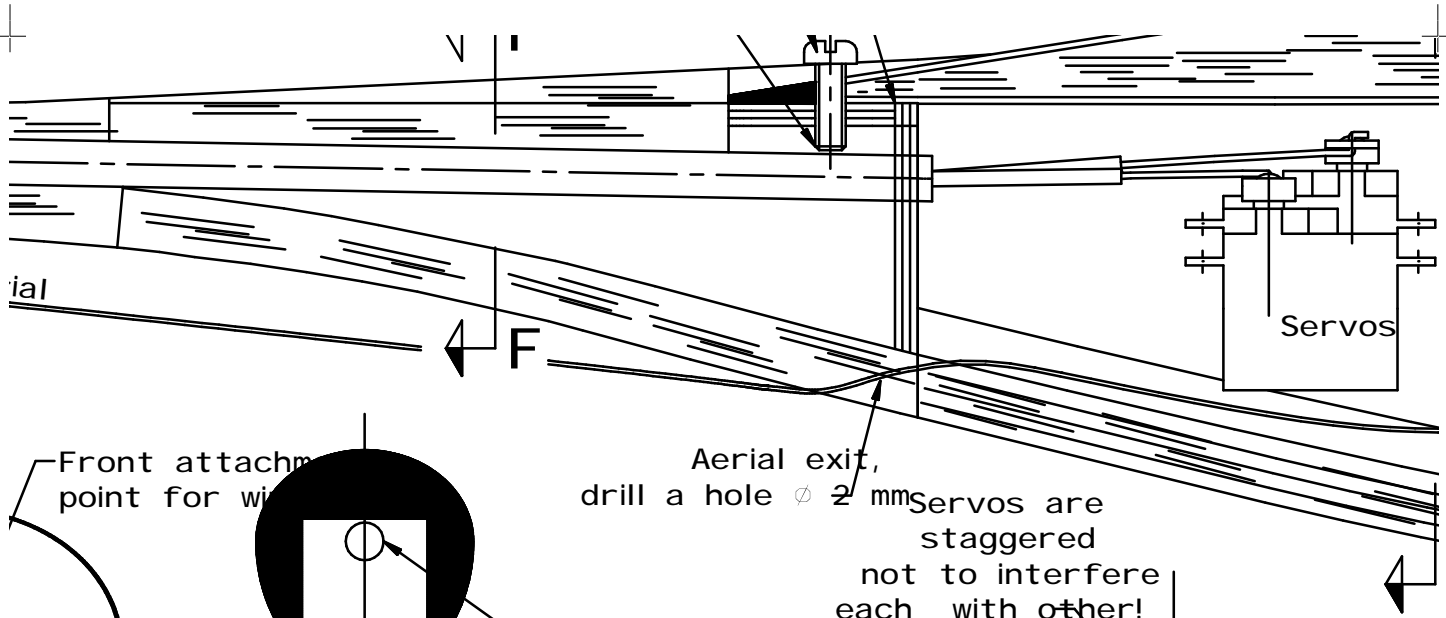
Section G-G

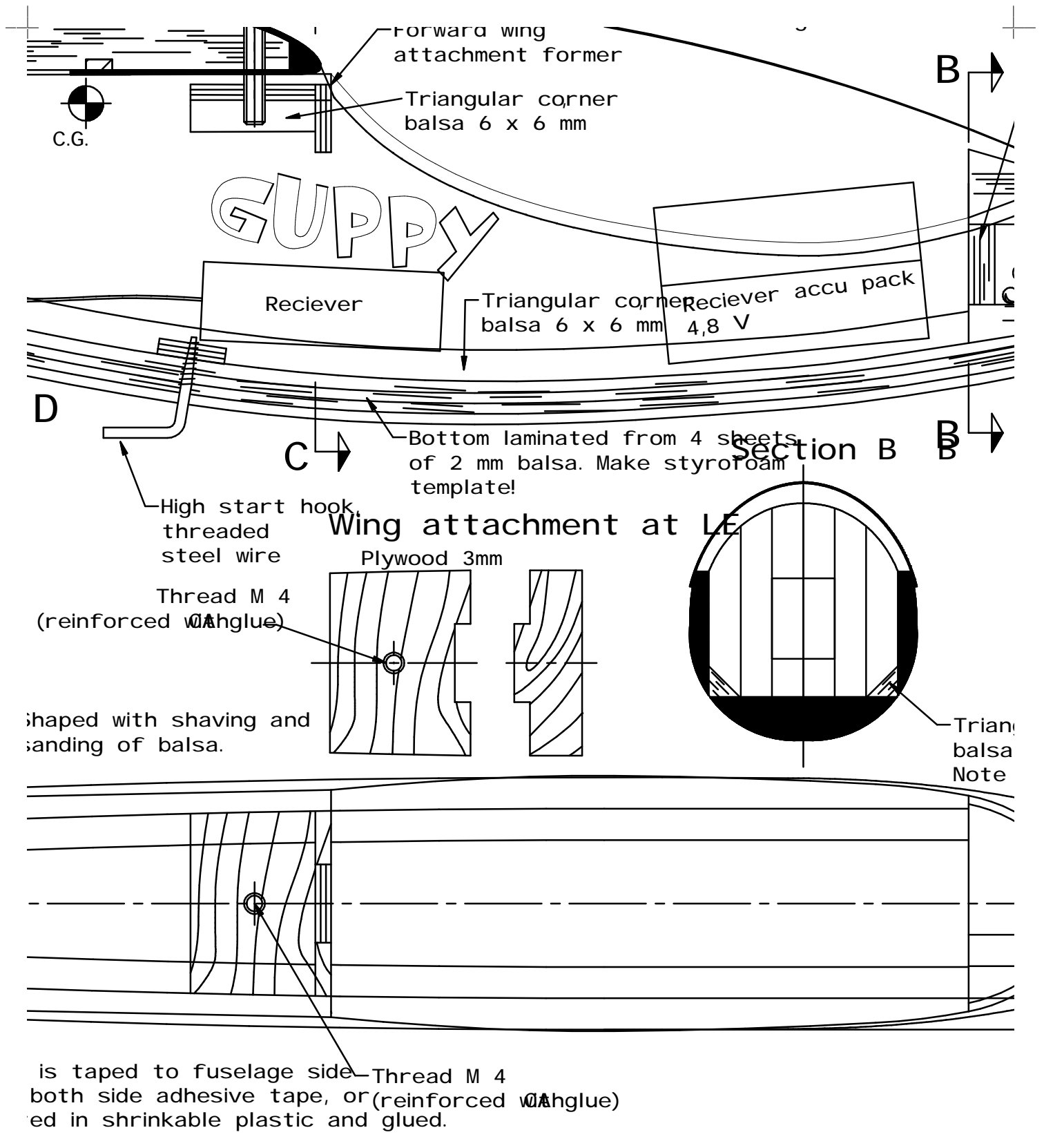


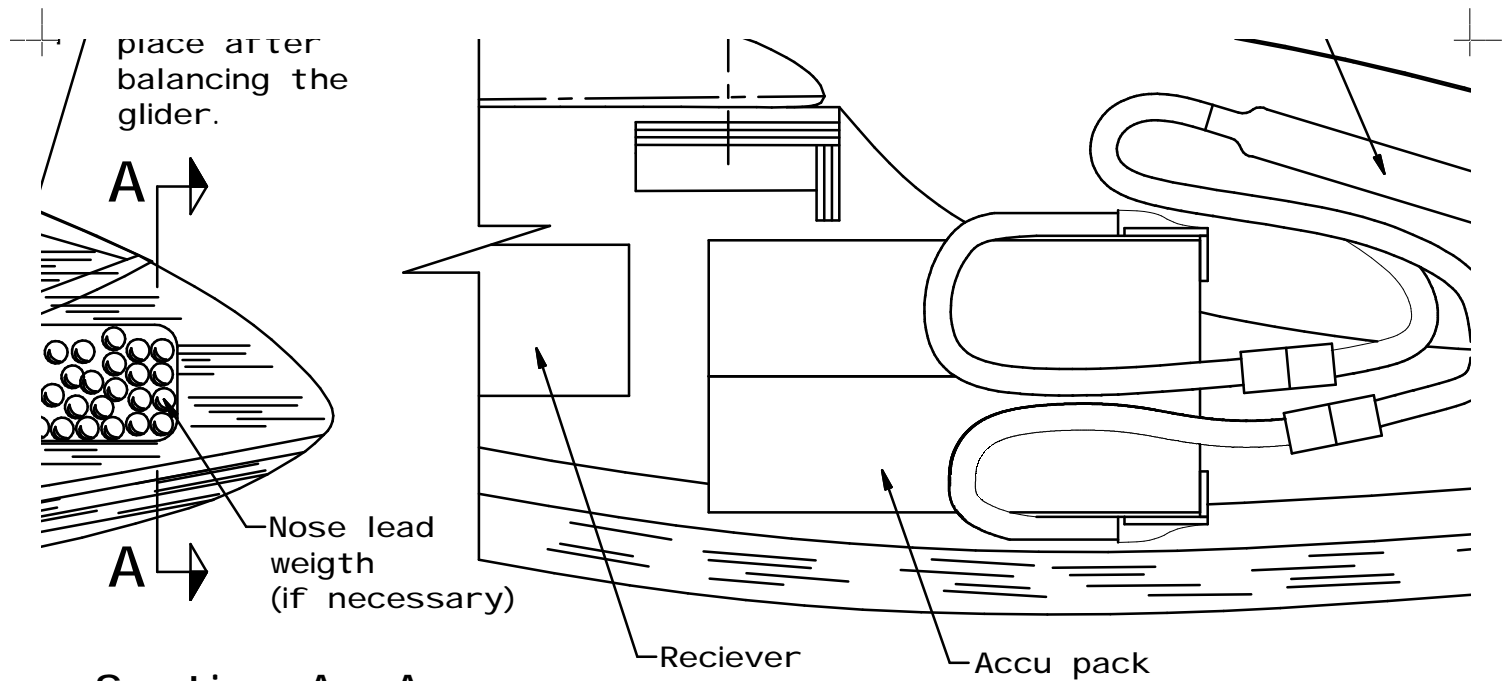
Section

(r

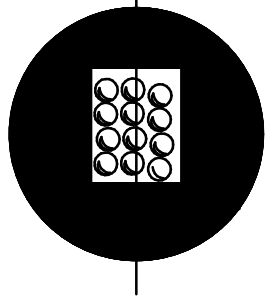




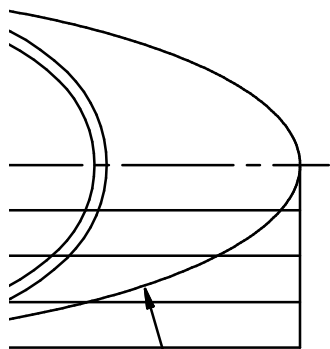




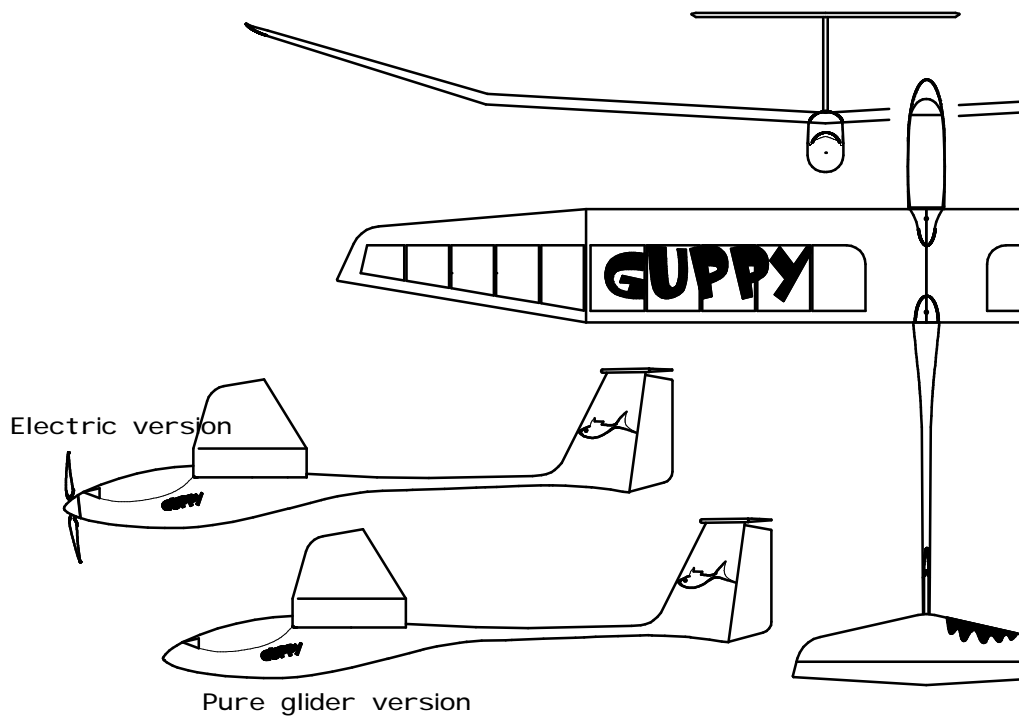
Section A A

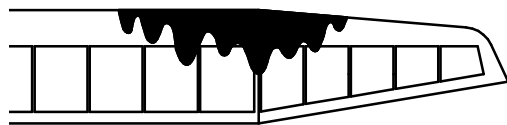
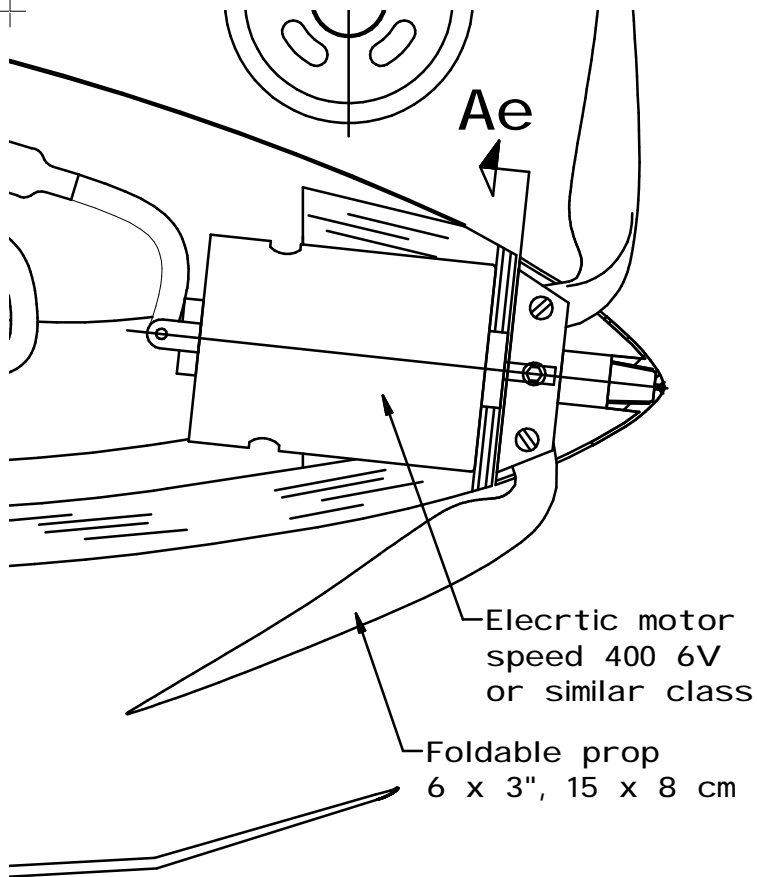


gular corner, filling
6 x 6 mm.
the grain direction!



Shaped with shaving and
sanding of balsa.





Wing span: 1500 mm
 Wing area: 20,4 dm²
 Wing AR: 11
 Length : 805 mm
 Take off mass: 320 (480*) g
 Wing loading: 16 (24*) g/dm²
 (Data * are valid for electric version)

Designed by : M. Sersen - Erman
 Scale: 1:1

RC MODEL OF GUPPY SAILPLANE













