

AILERON & FLAP SERVO POSITION (FLAT)

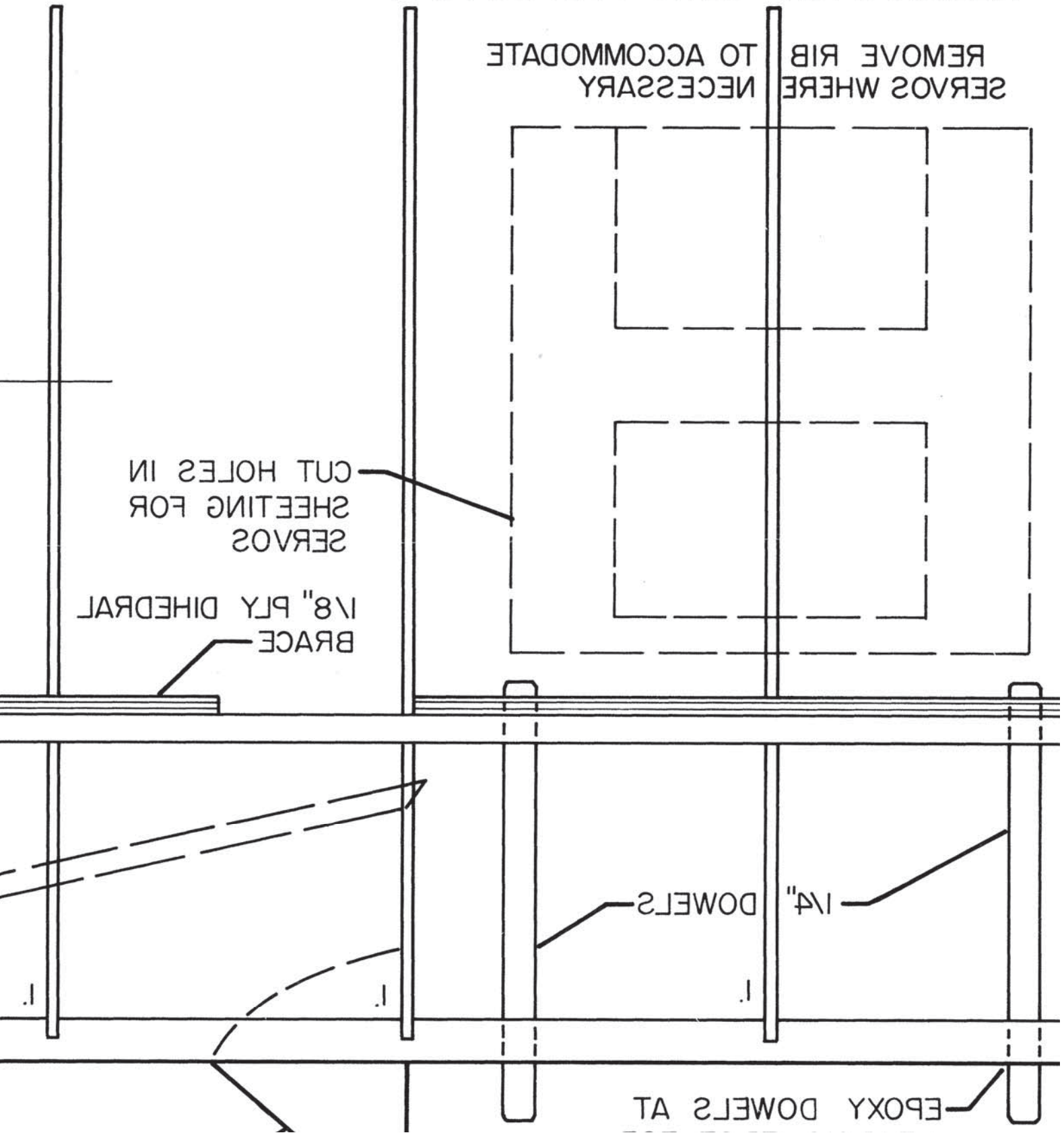
SERVOES WHERE REMOVE RIB TO ACCOMMODATE NECESSARY

SERVOES SHEETING FOR CUT HOLES IN

BRACE 1/8" PLY DIHEDRAL

1/4" DOWELS

EPOXY DOWELS AT



FLAP OUTLINE IF
FLAPS ARE USED
CONST. SAME AS
AILERONS

FLAP
BELLCRANK

1/16"
PLY
PLATE

3/16" SQ. SPRUCE
SPARS

3/8" SQ. BALSA
LEADING EDGE



3/16" X 1/2" SPRUCE STRUT

AT BOTH ENDS
TO HOLD DOWN BRACE
BLIND NUT WITH BOLT
USE WOOD SCREWS OR

ALUMINUM
BELLCRANK
1/16" PLY
PLATE

BALSA TOP & BOTTOM
WING SHEETING 3/32"

1/4" BALSA

