



www.flitetest.com

# FT Old Speedster

## Recommended electronics:

- 24 g 1300 kv motor
- 10-18 amp ESC
- 1000 - 1300 mAH 3s
- (2) 9 gram servos

## Throws:

- 16° deflection
- Expo 30%

## Weight Without Battery:

12.4 oz (352 g)

## Recommended Prop:

9 x 4.7 slow fly



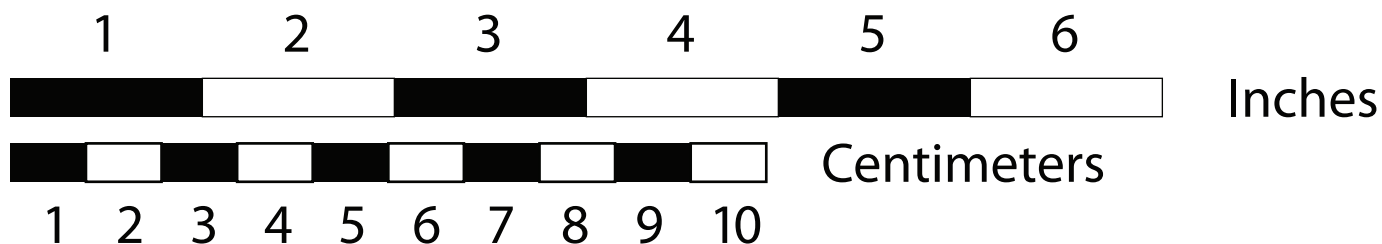
black = cut

red = score 50%

blue = lightly crease

## Tiled plans dimensions:

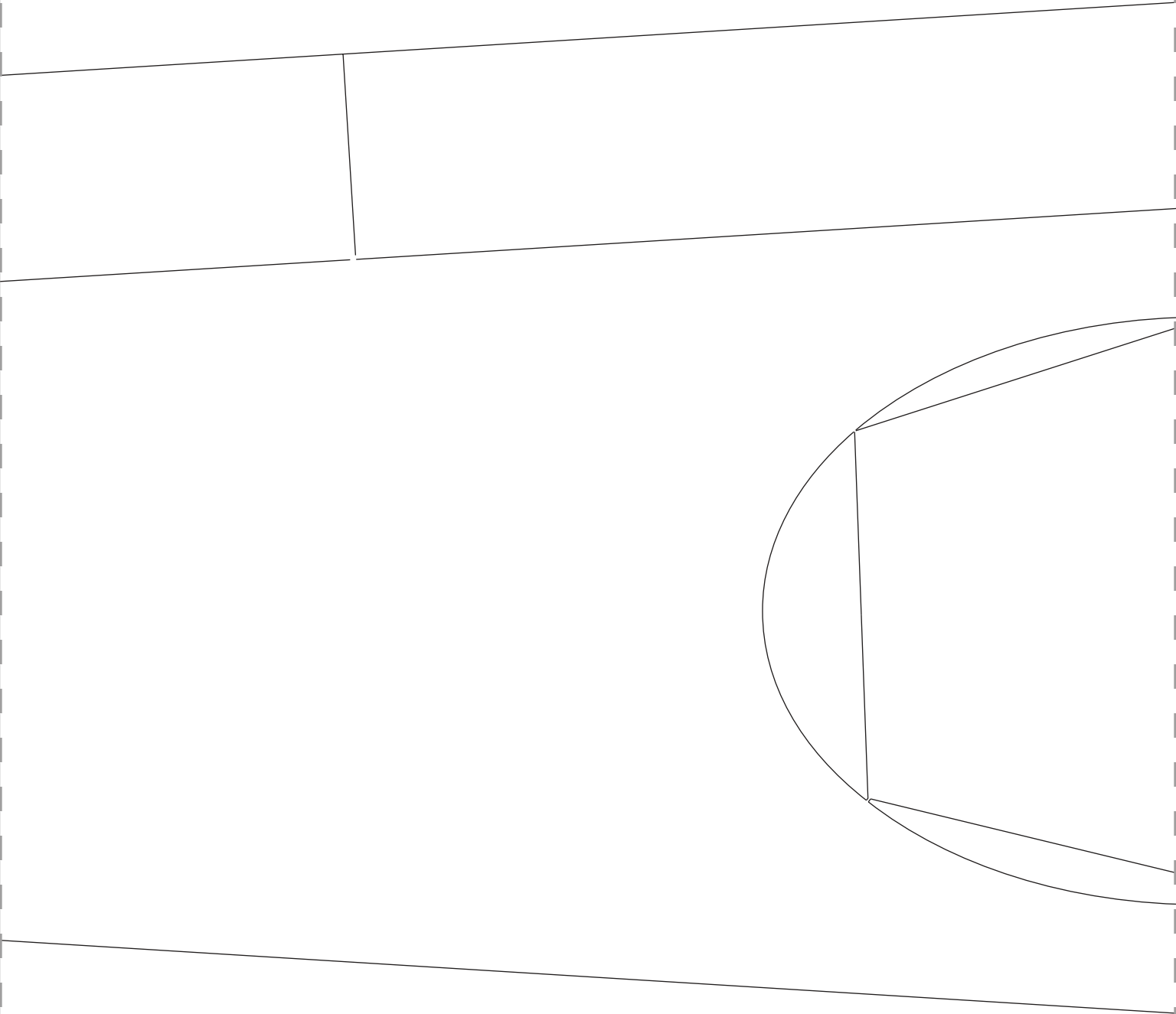
|    |    |    |    |    |    |    |    |
|----|----|----|----|----|----|----|----|
| 1  | 2  | 3  | 4  | 5  | 6  | 7  | 8  |
| 9  | 10 | 11 | 12 | 13 | 14 | 15 | 16 |
| 17 | 18 | 19 | 20 | 21 | 22 | 23 | 24 |

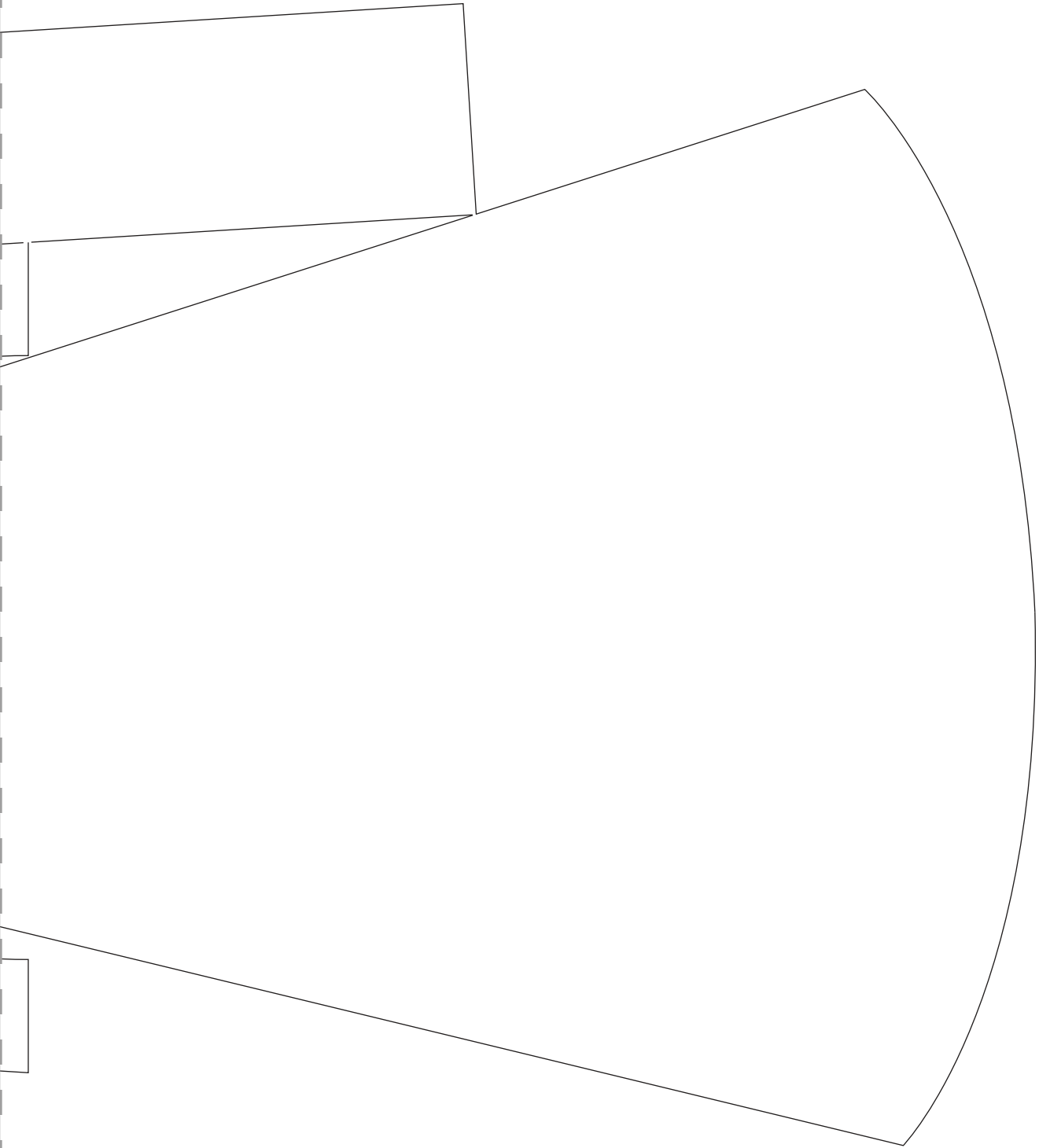


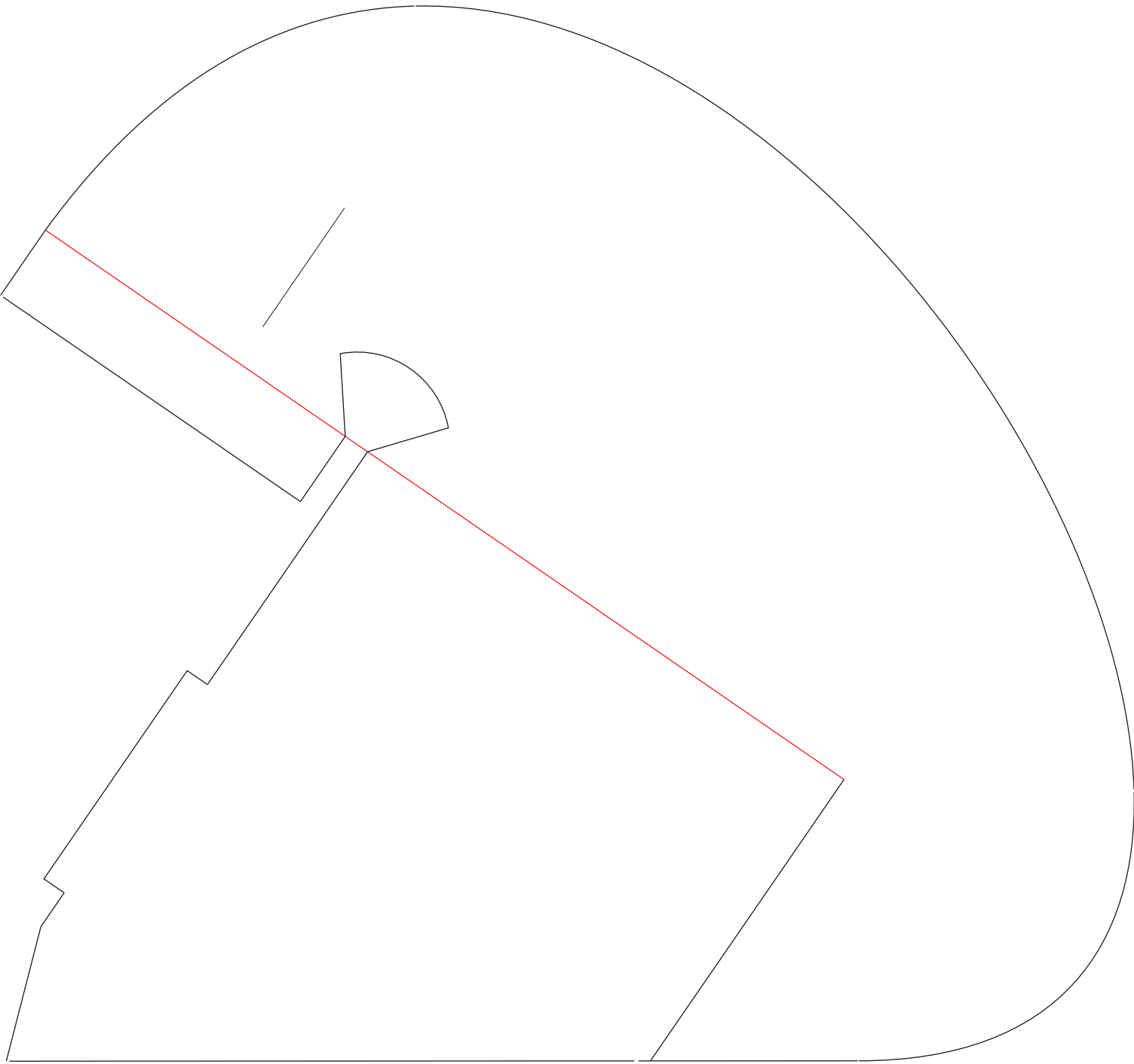
Design By: Josh Bixler

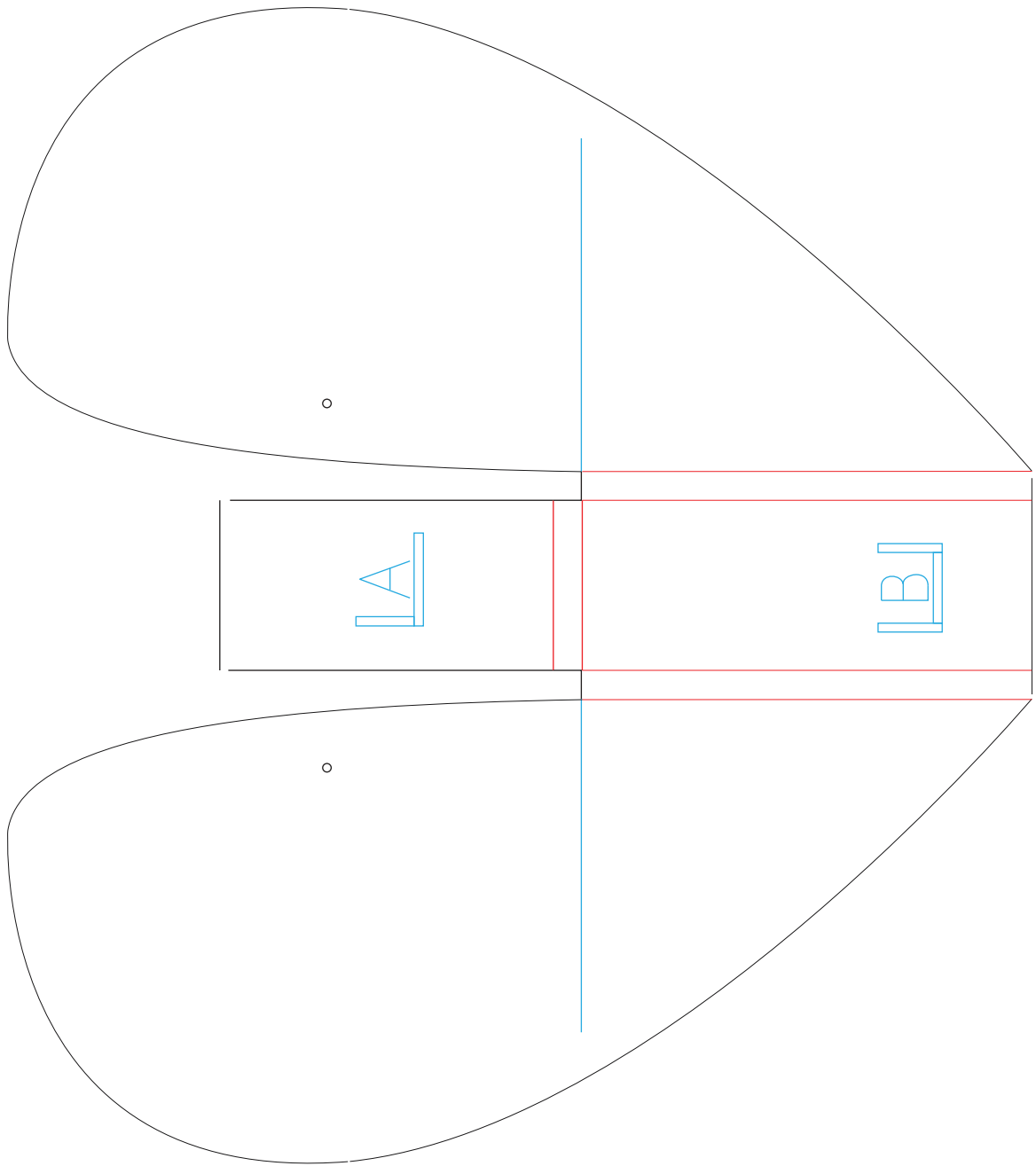
posterboard

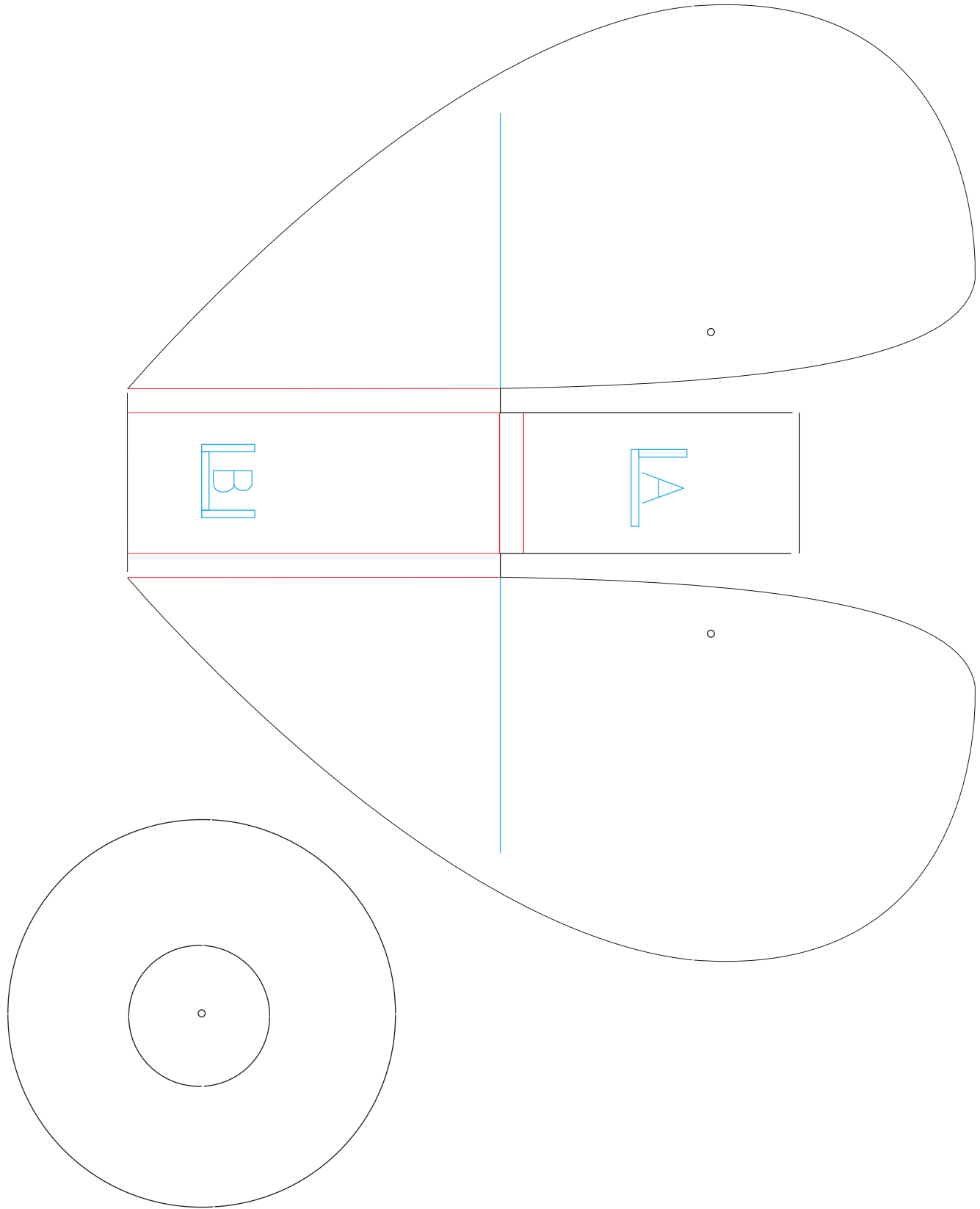


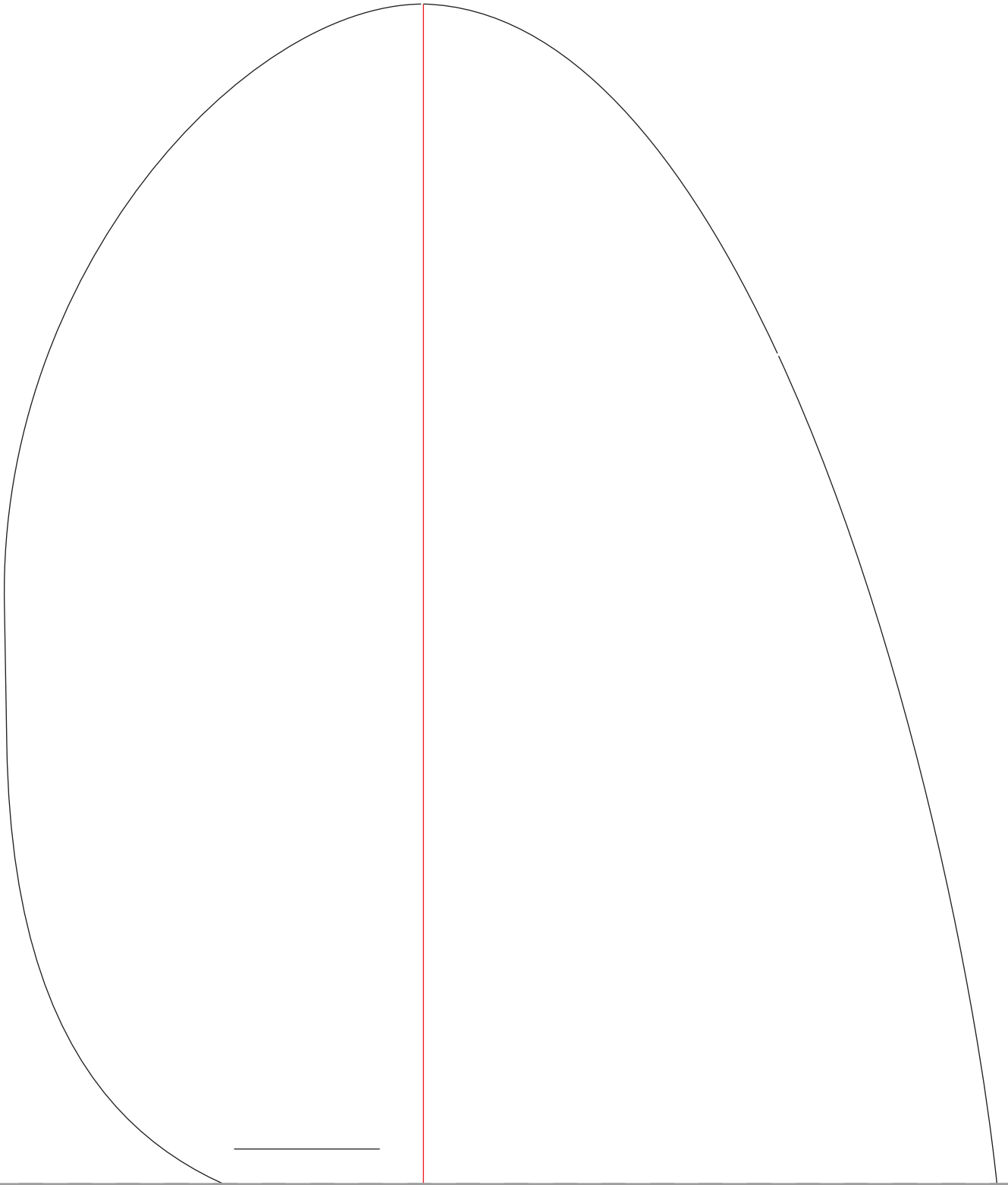


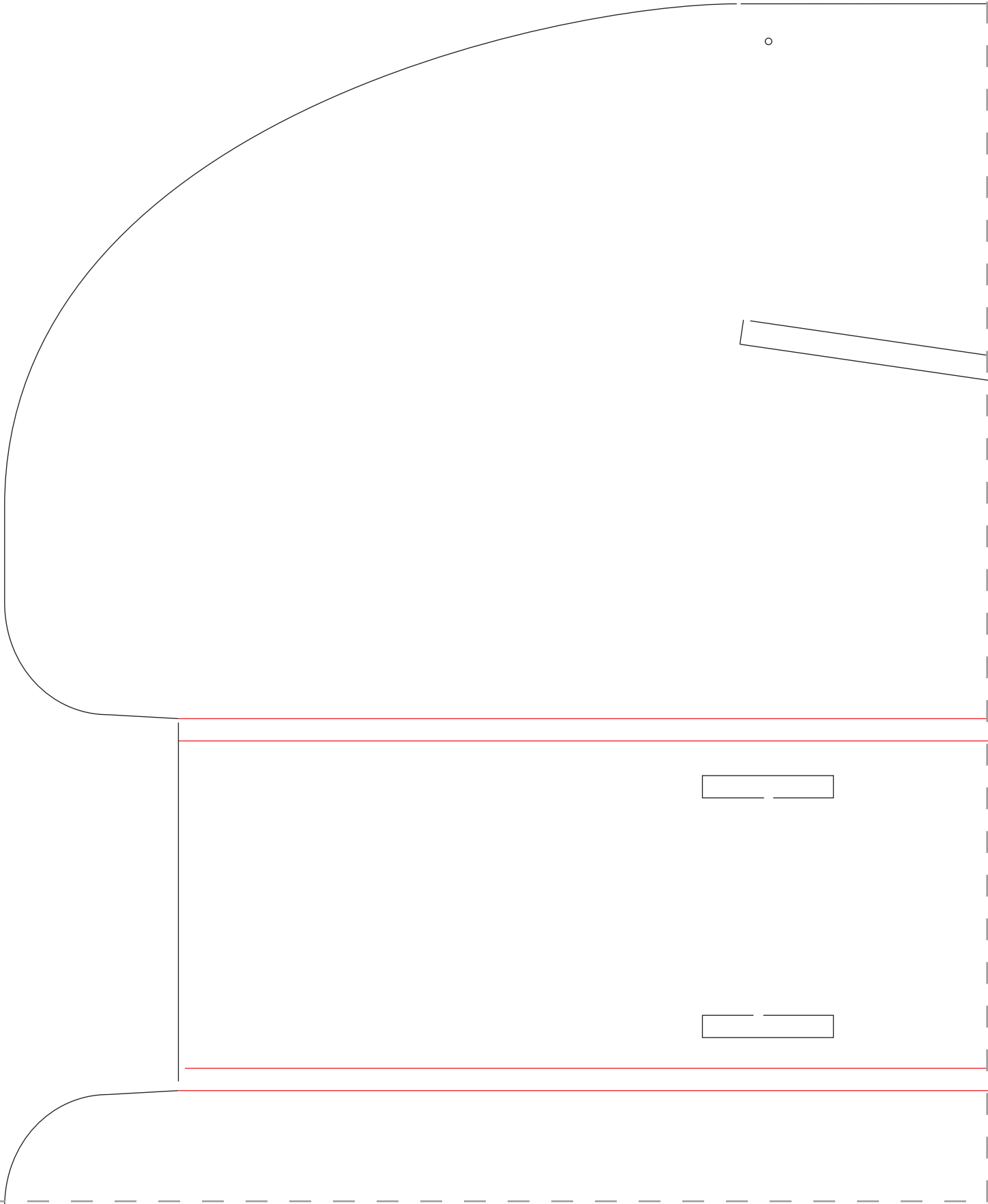








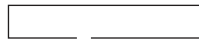
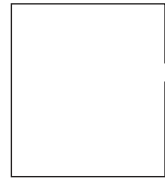
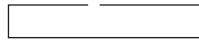




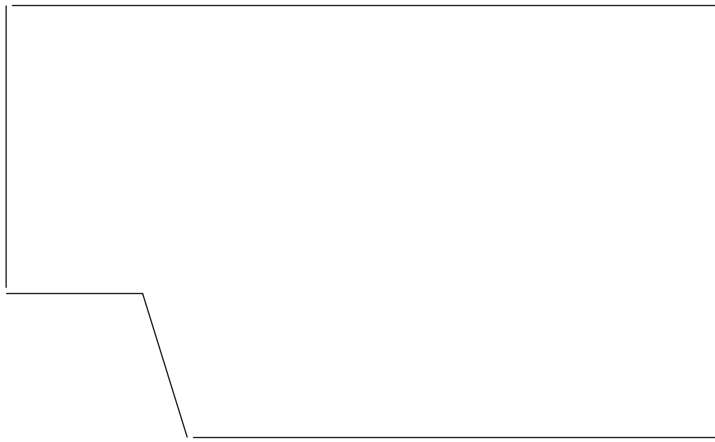
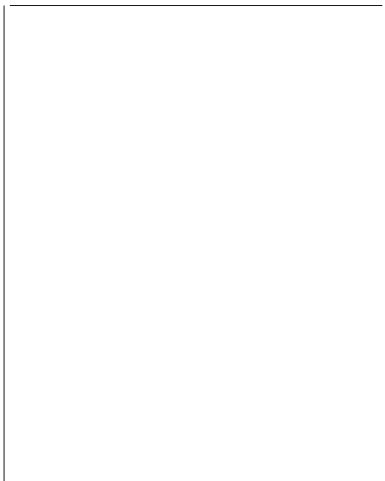
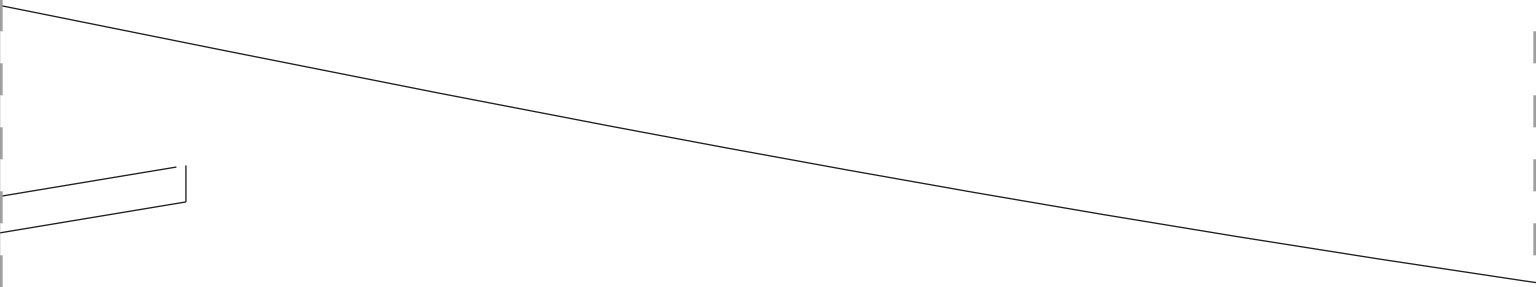
o

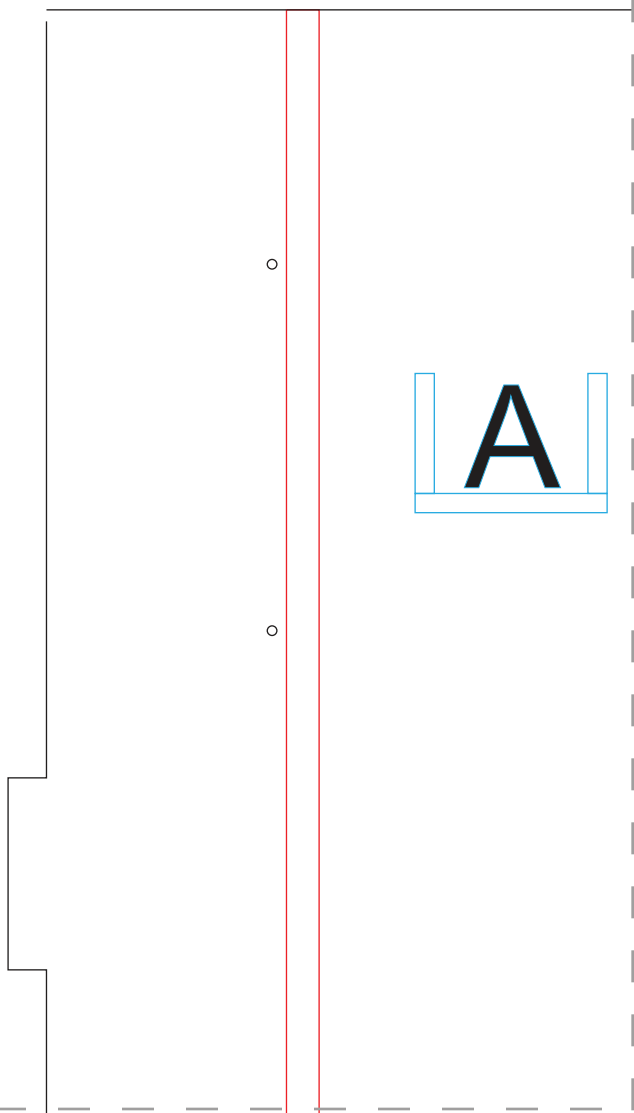
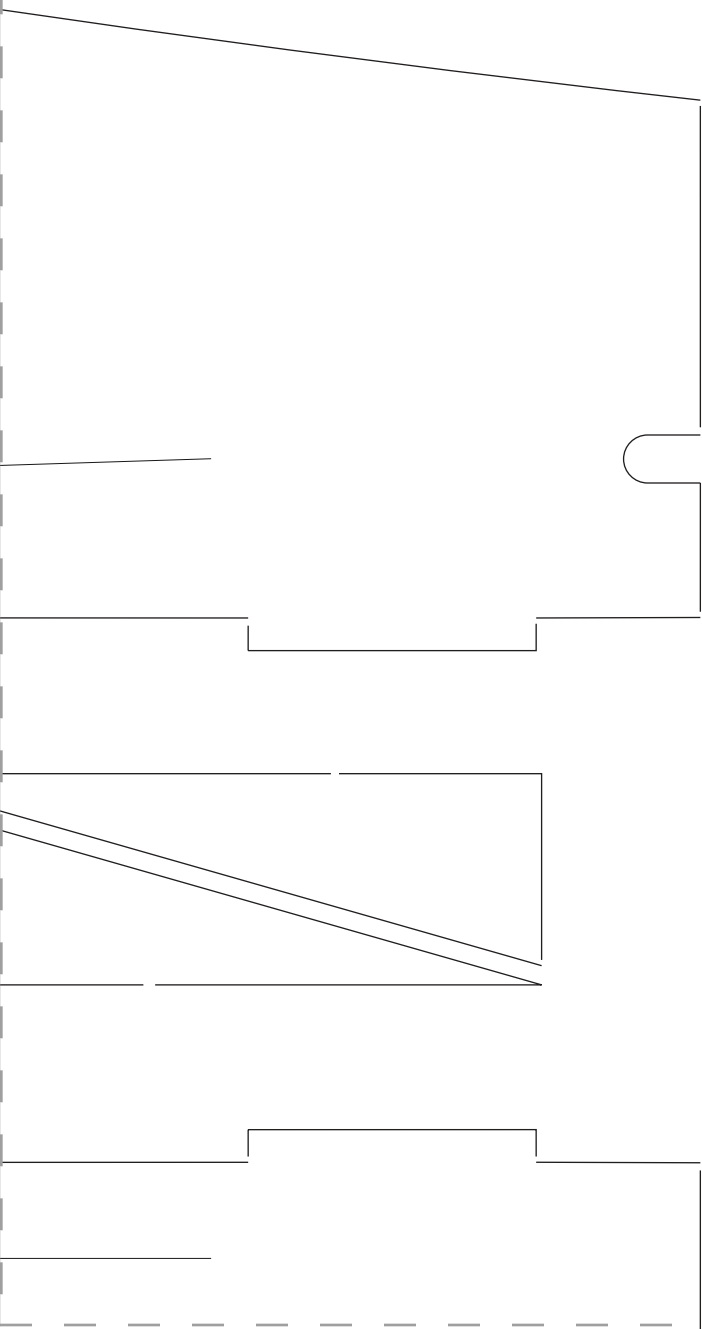
o

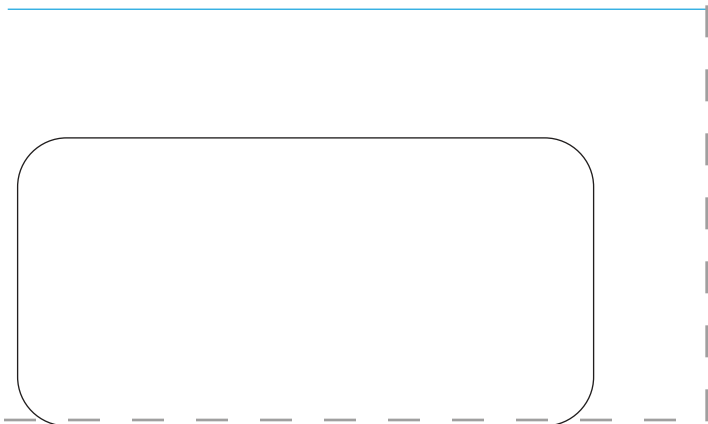
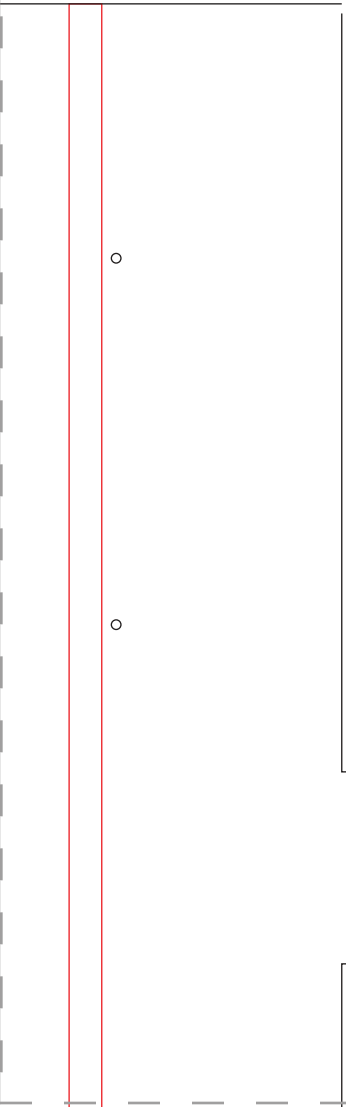
B

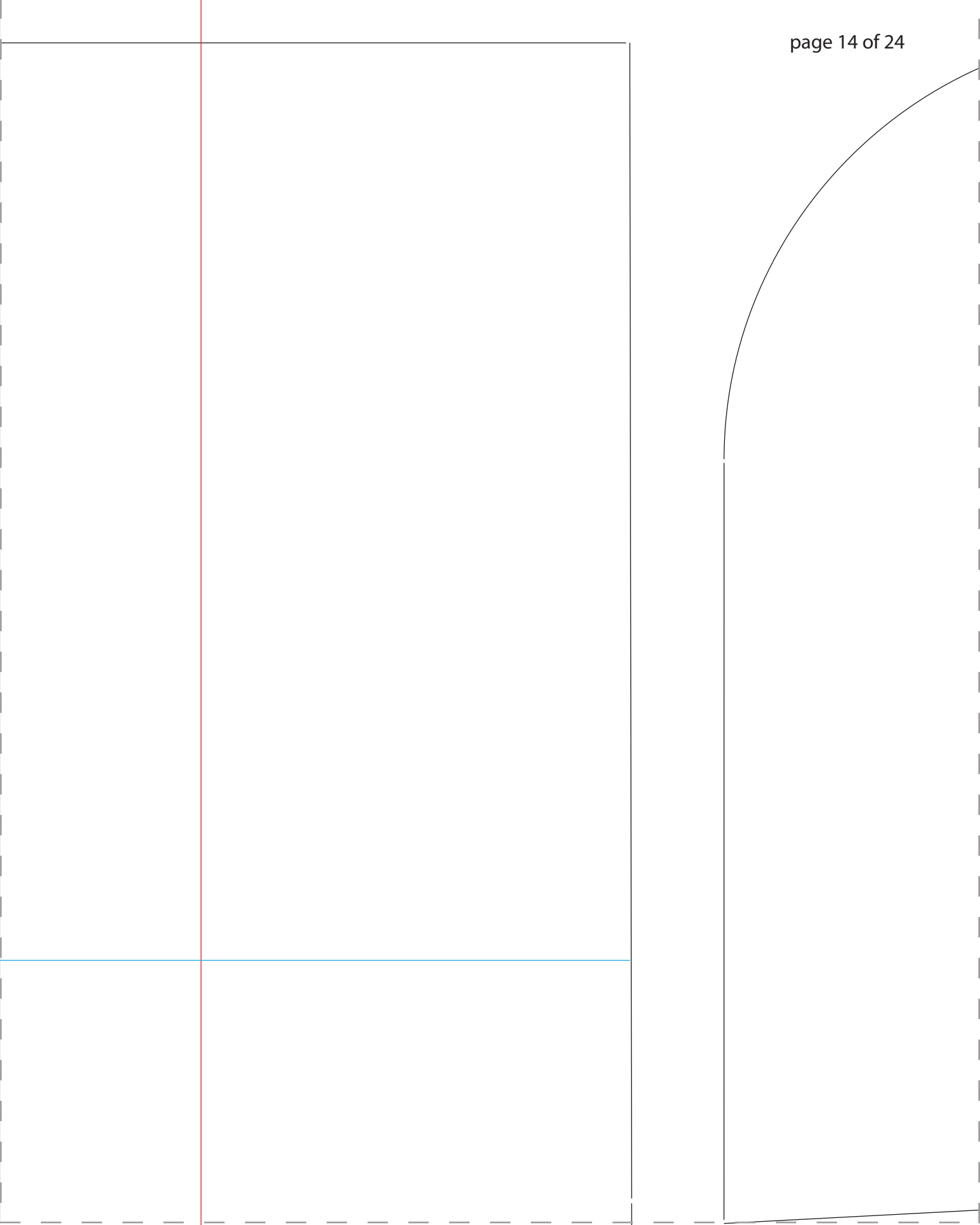


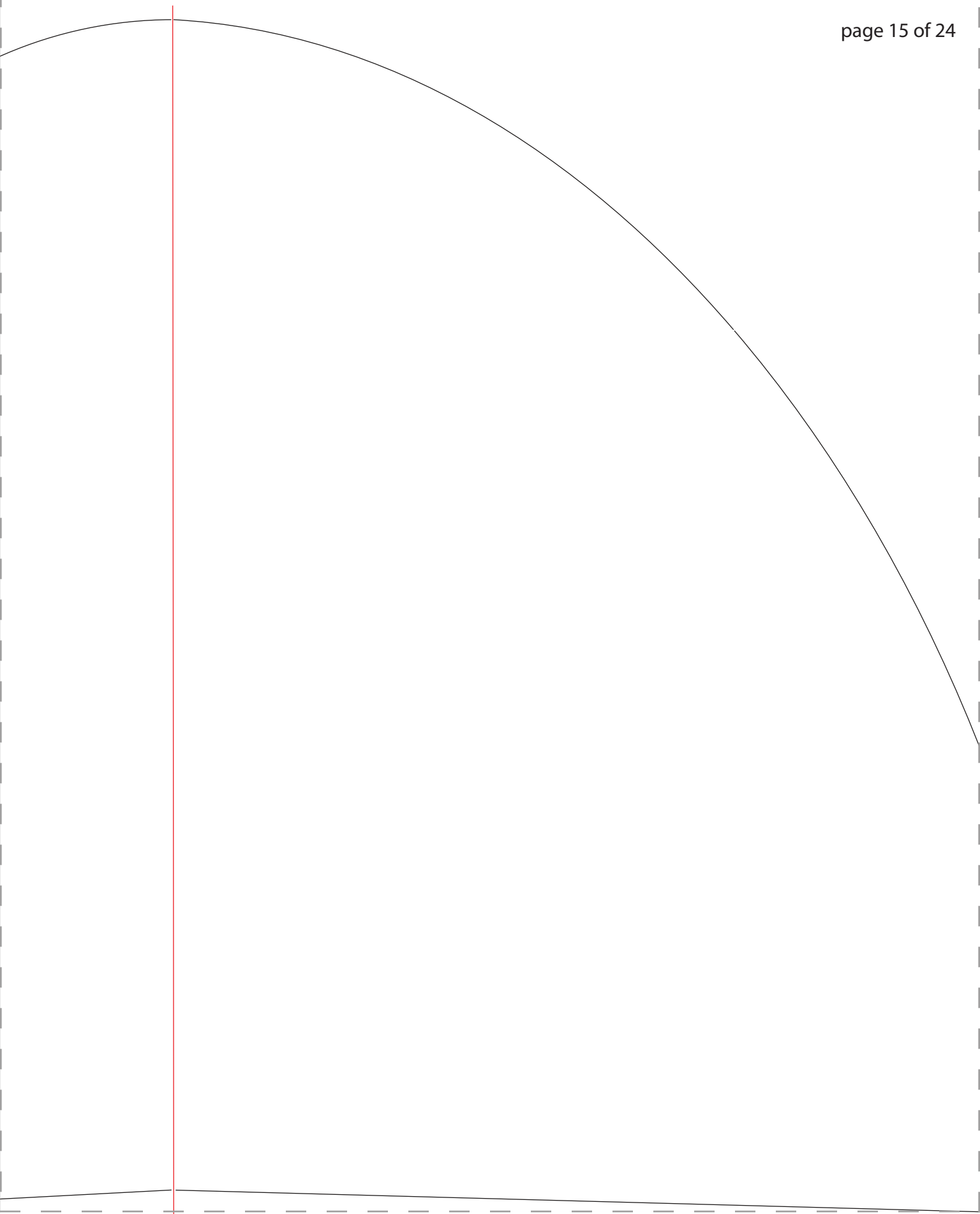
o

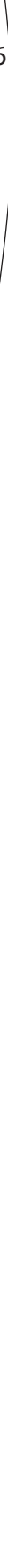
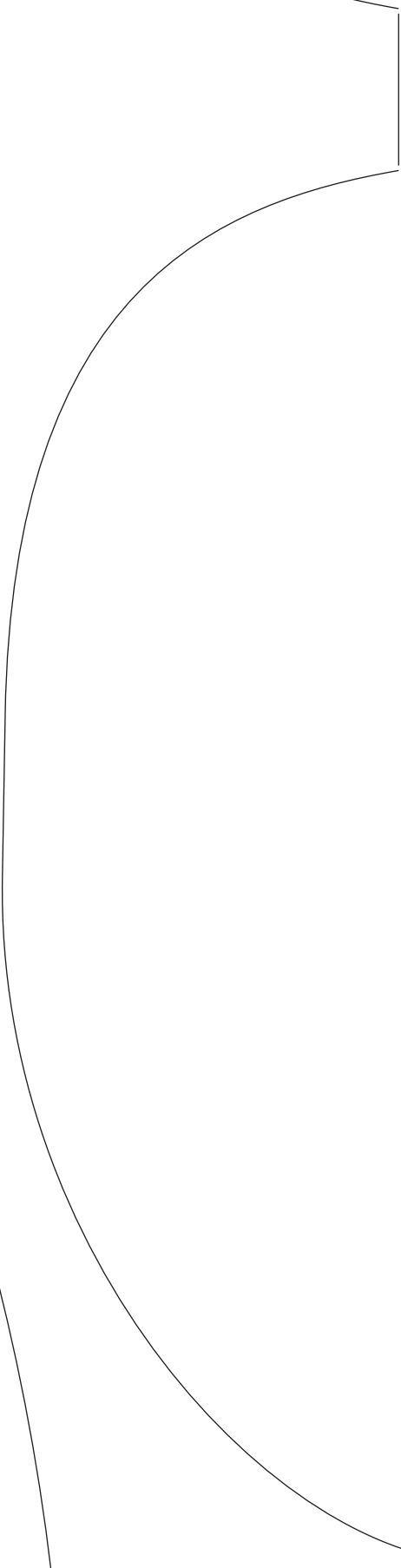


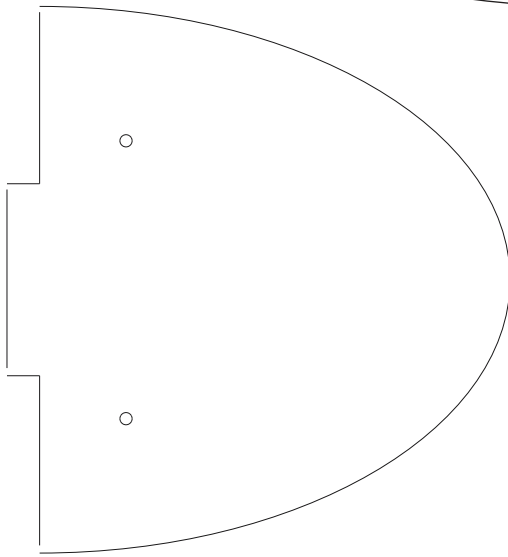
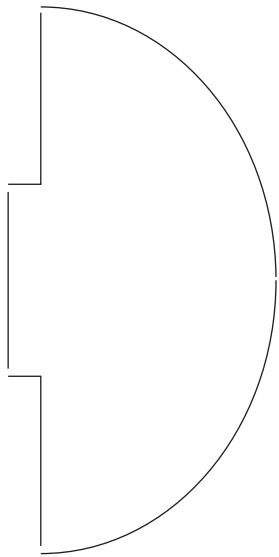
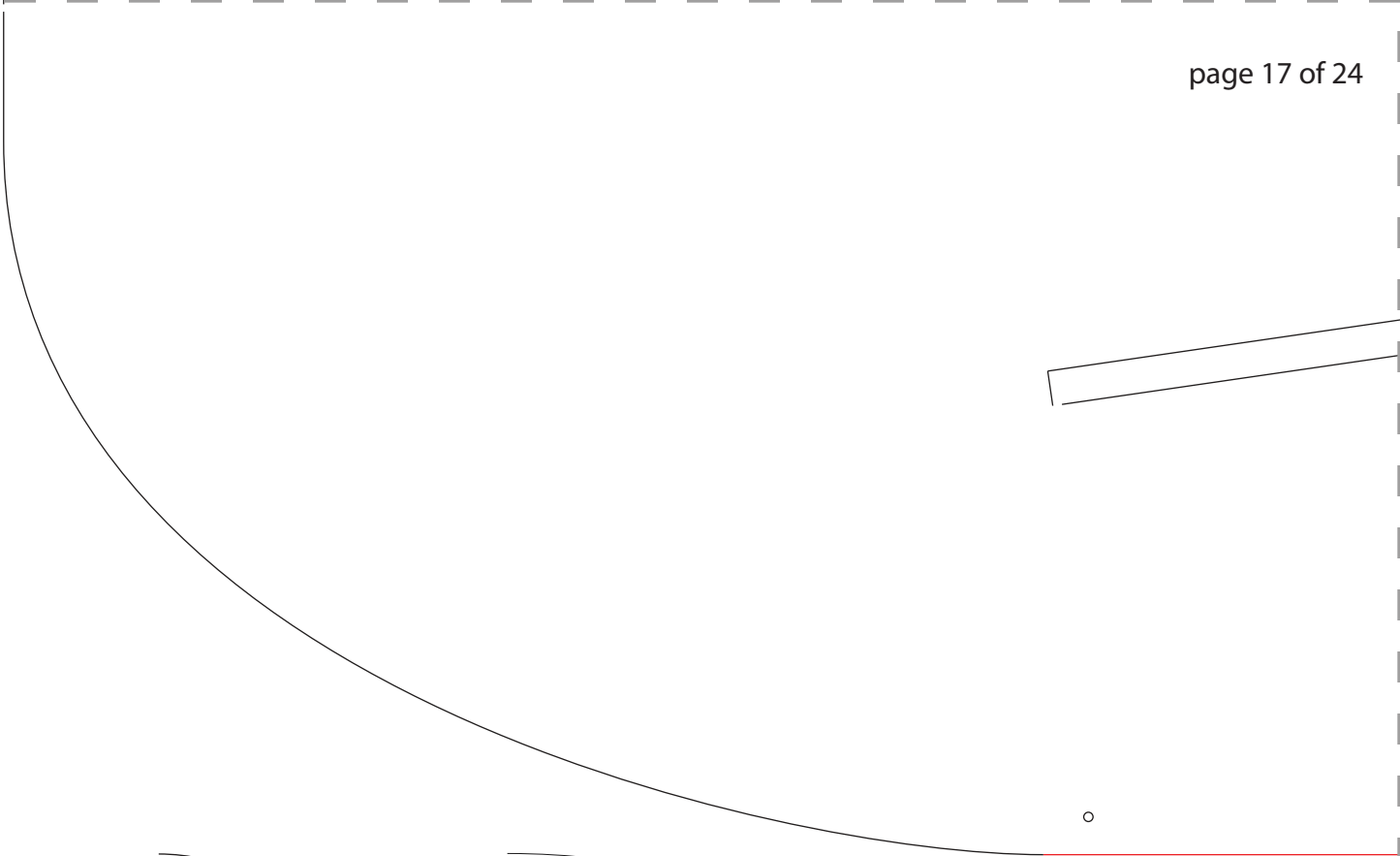




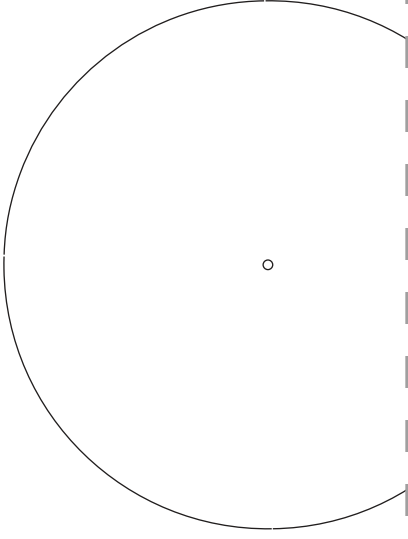
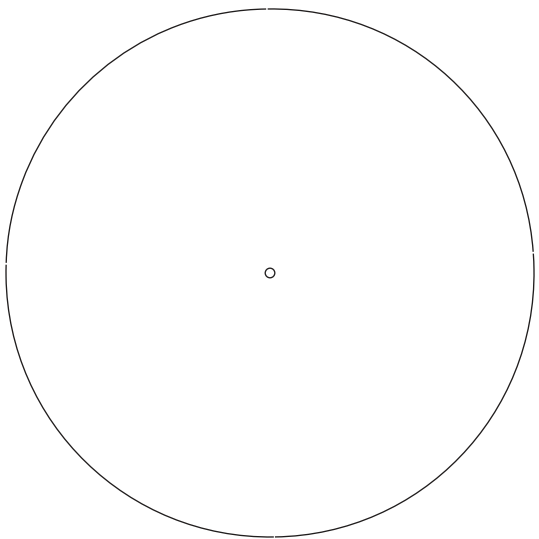
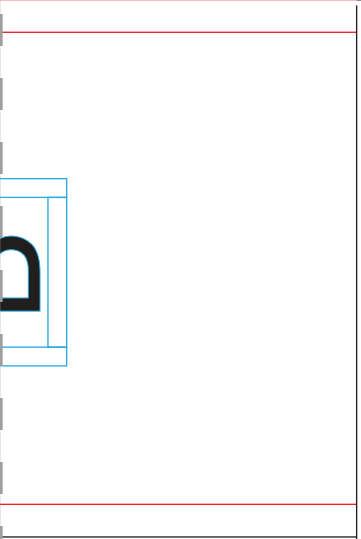
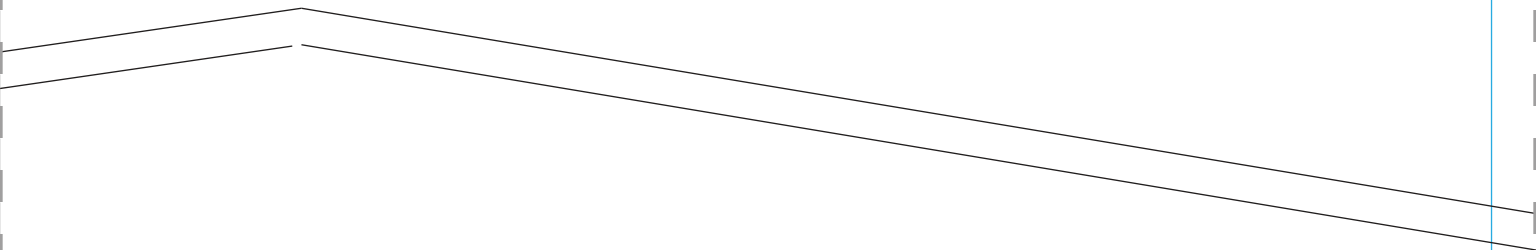


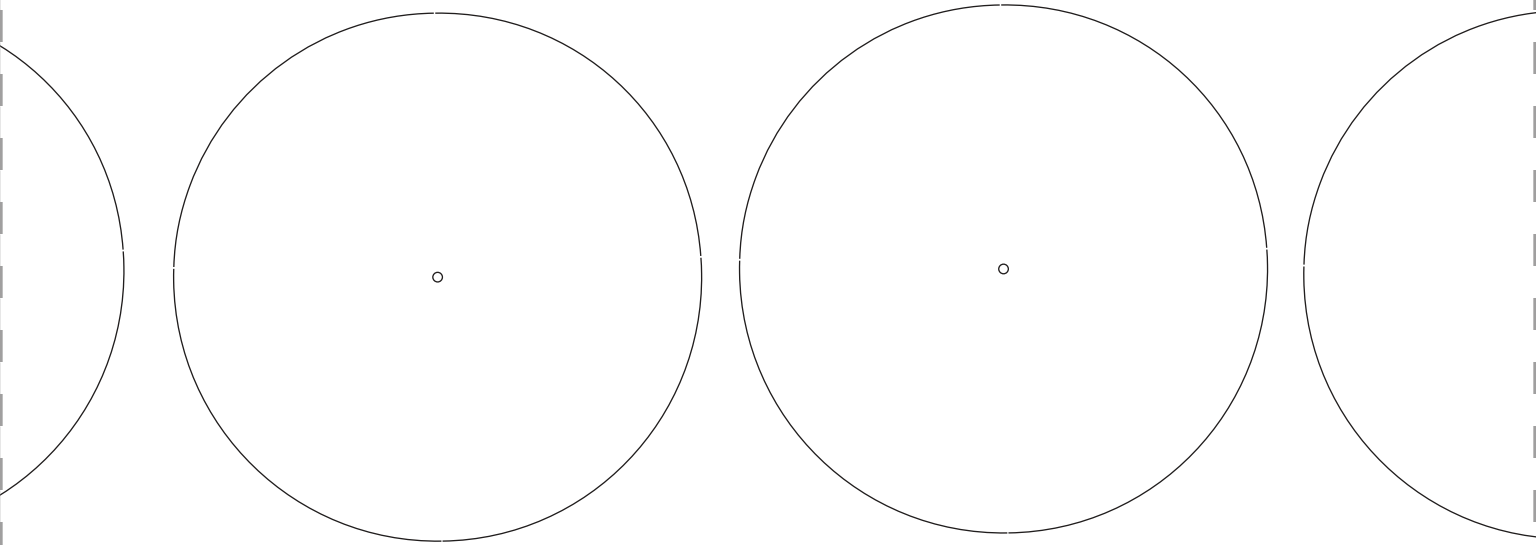
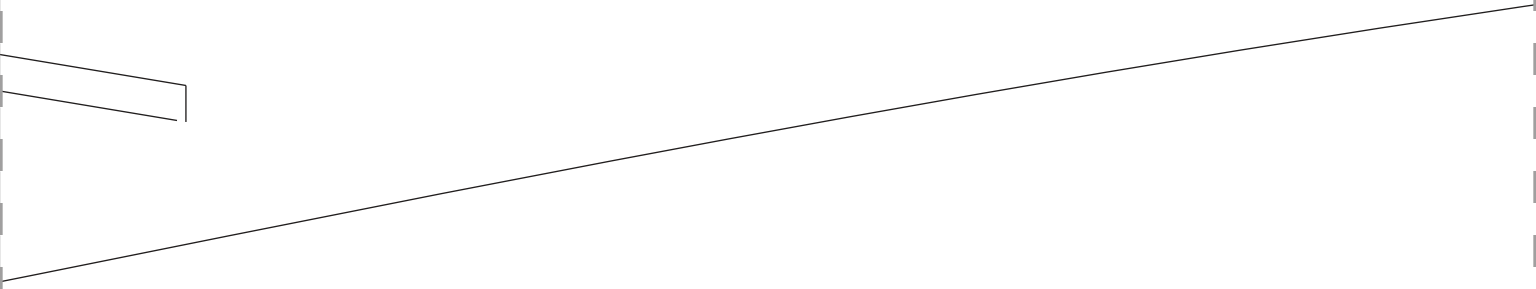
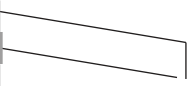


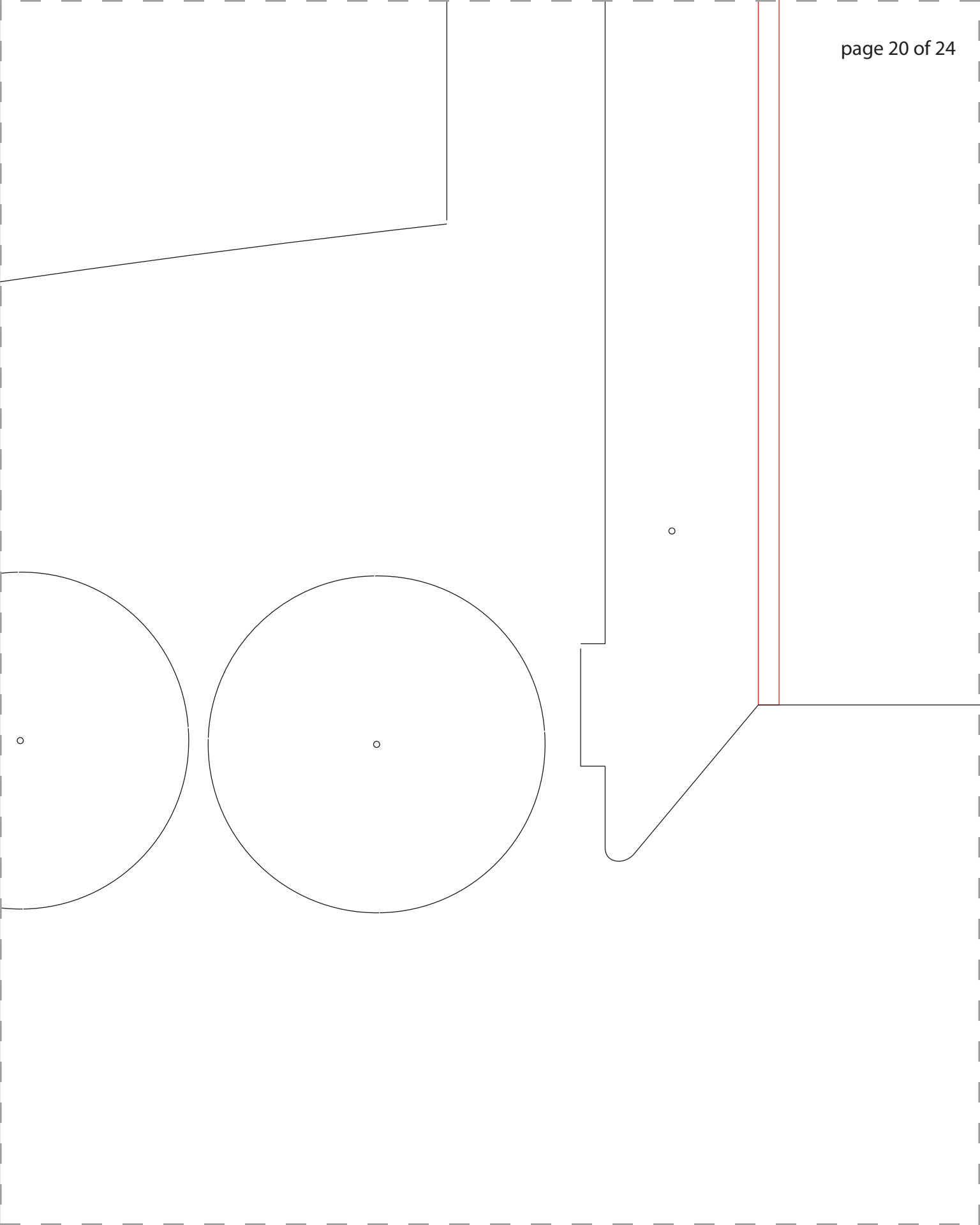


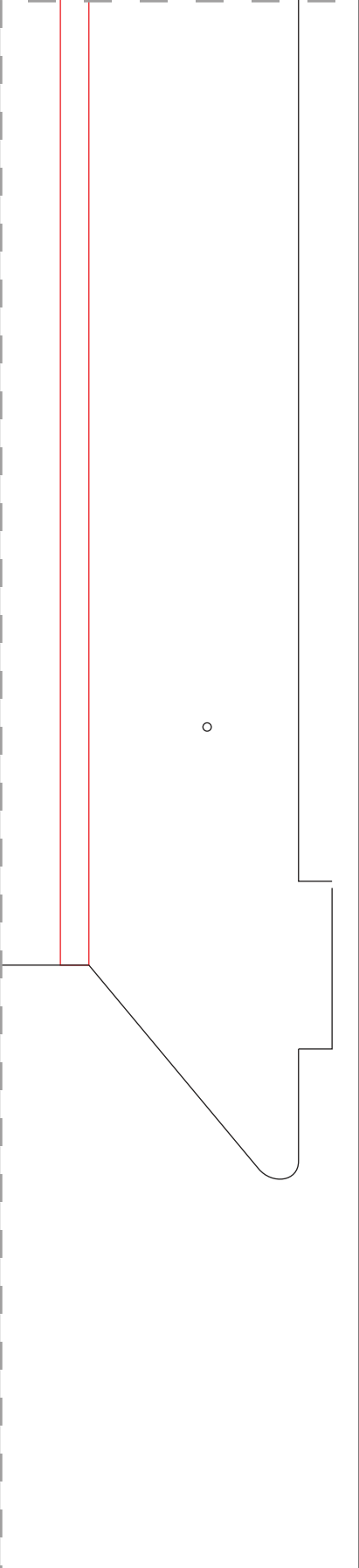


RI

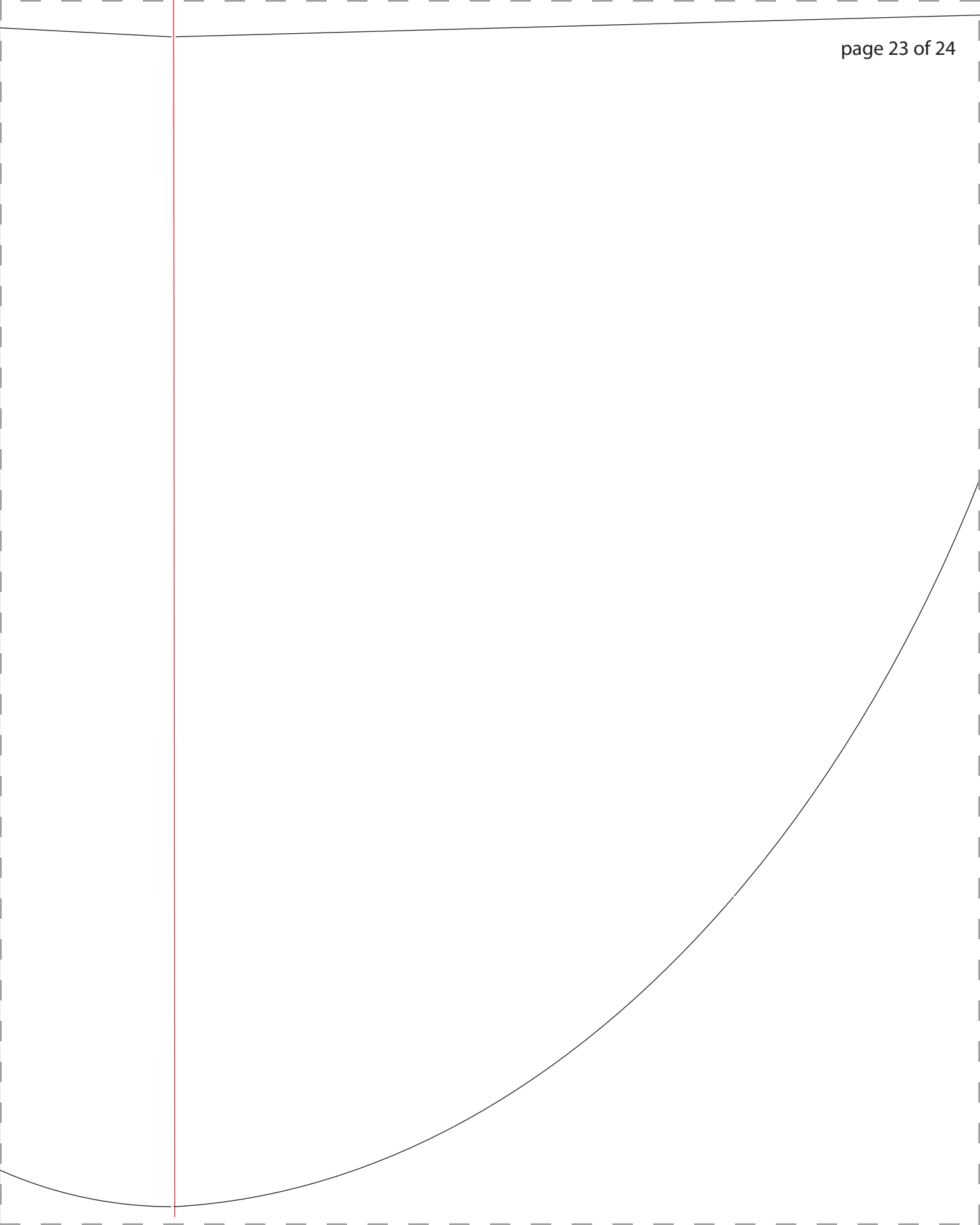


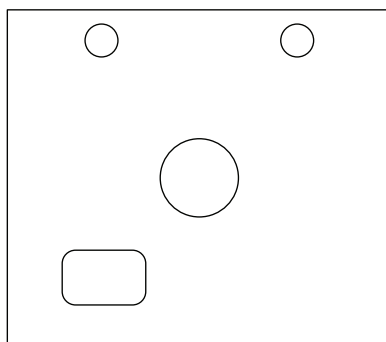
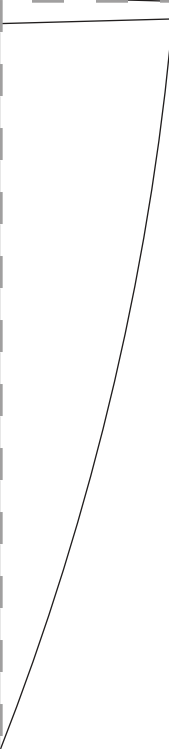












**Firewall**

**2" X 1 3/4" Inch**

**(50mm X 45mm)**

**1/16" Inch thick**

**(1.5mm)**

**Hobby Plywood**

