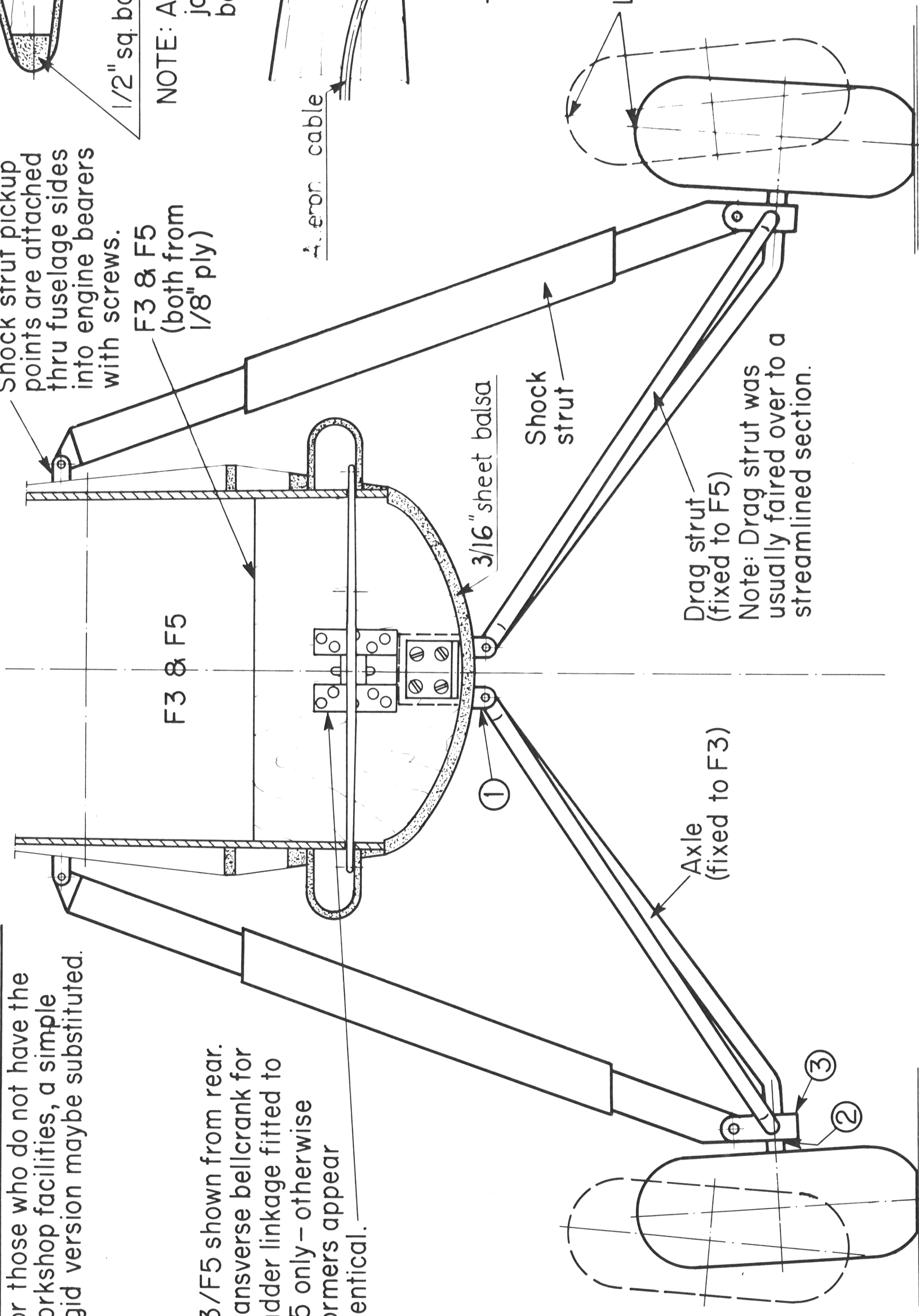


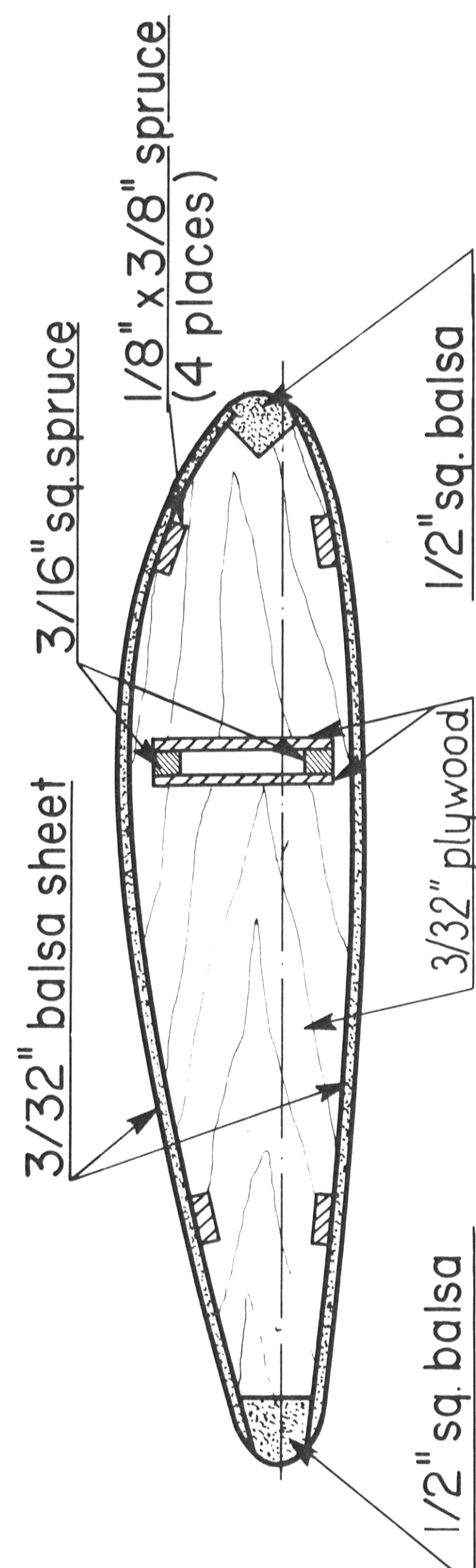
FULLY SPRUNG LANDING GEAR
 For those who do not have the workshop facilities, a simple rigid version may be substituted.

F3/F5 shown from rear.
 Transverse bellcrank for rudder linkage fitted to F5 only - otherwise formers appear identical.

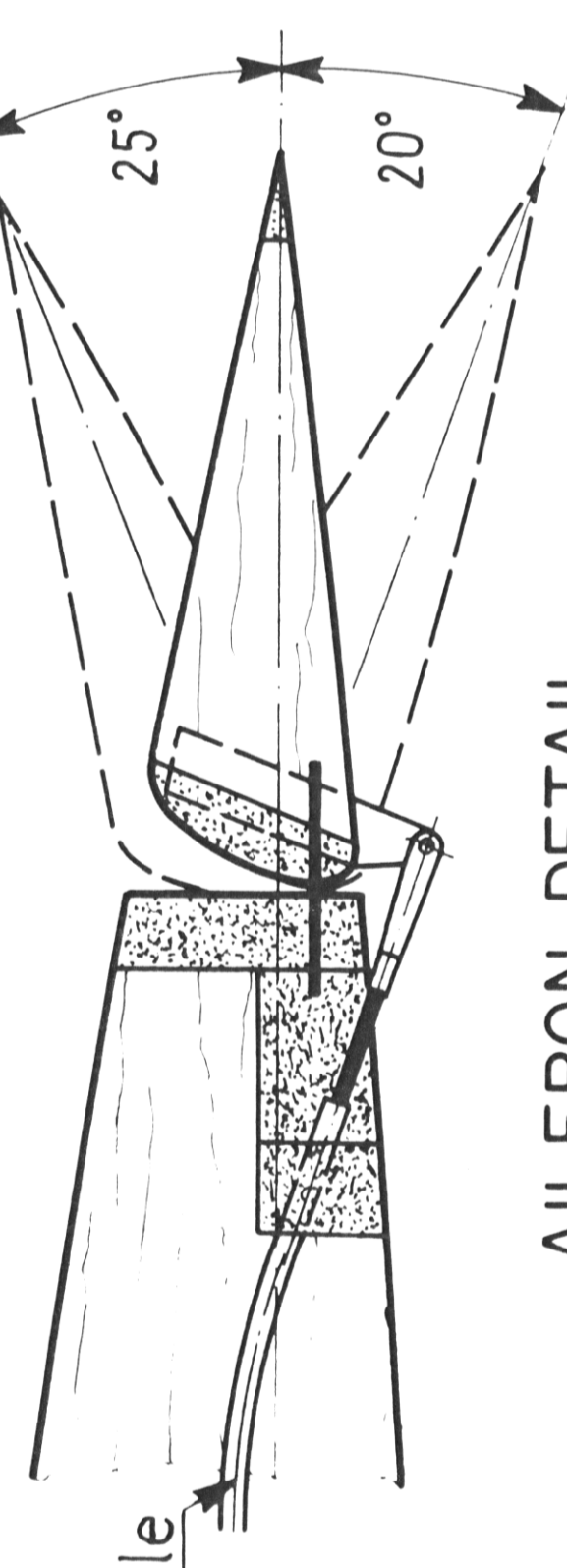
Shock strut pickup points are attached thru fuselage sides into engine bearers with screws.
 F3 & F5 (both from 1/8" ply)



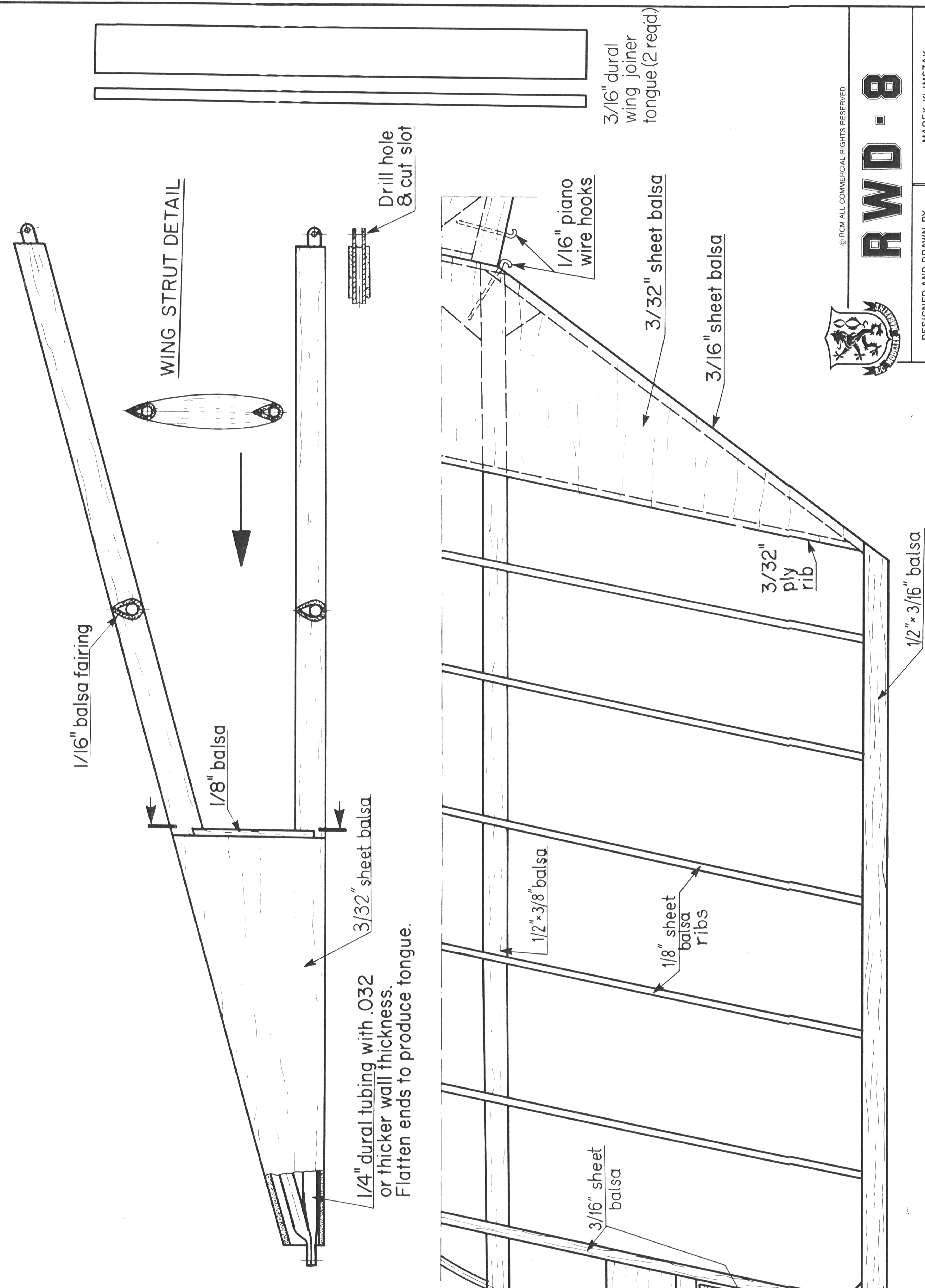
- L.G. is built in 3 parts as follows-
- ① AXLE: Make from 3/16" piano wire. Attach top of axle with steel bolts to support plates on F3. Axle must swing freely.
 - ② SHOCK STRUT: Fabricate from steel & dural. See section on sheet 1 for reference. Axle goes thru bottom end of shock strut.
 - ③ DRAG STRUT: Make from 3/16" piano wire. Top of strut is bolted to support plates on F5. (Refer to side view) Bottom end is fitted to rear of shock strut/axle joining block.



NOTE: All center section ribs are 3/32" ply. Make 4 wing joining boxes from 3/32" ply & 3/16" spruce. Build boxes around 3/16" tongue for snug fit.



AILERON DETAIL



LEFT HAND WING DETAIL

NOTE: Wing is built and rigged flat - NO DIHEDRAL

© FROM ALL COMMERCIAL RIGHTS RESERVED

RWD-8

DESIGNED AND DRAWN BY MAREK KLIMCZAK

0 1 2 3 4 5 6

PLAN NO. 814