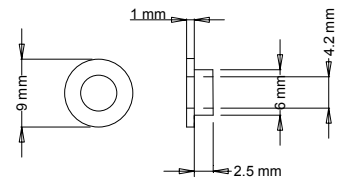
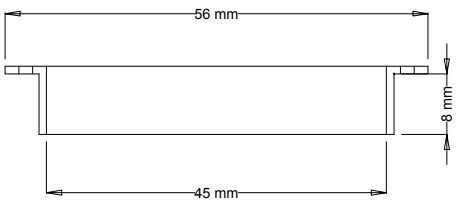
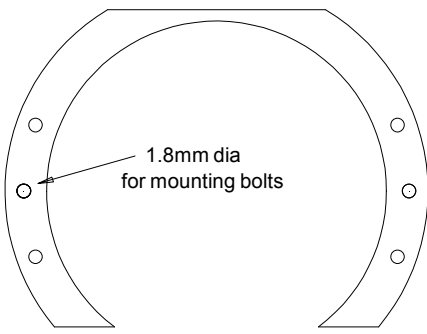


Bushes from gunmetal or phosphor bronze

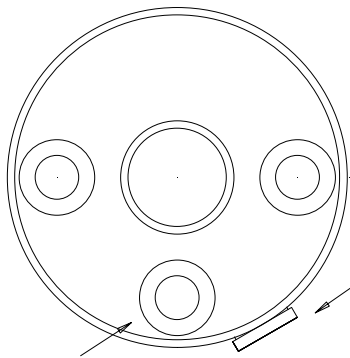
Top bushes, 3 off 1/4" x 40 tpi



Side bushes, 2 off 3/16" x 40 tpi



Mounting flange, fabricate from 1mm brass sheet bolt or rivet to firebox



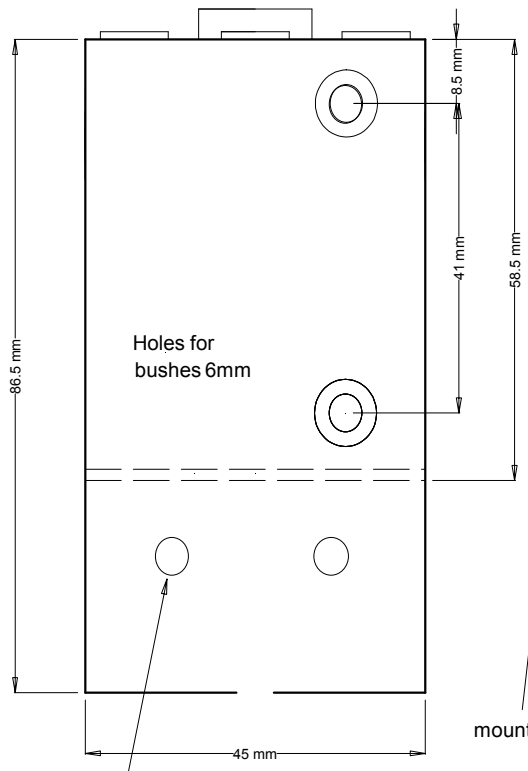
ALL JOINTS SILVER SOLDERED  
PRESSURE TEST TO 80 PSI  
SAFE WORKING PRESSURE 40 PSI

safety valve

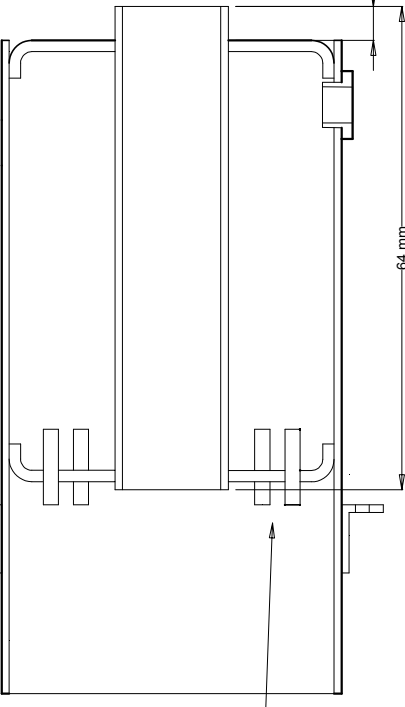
boiler filler

water gauge

Bush for regulator



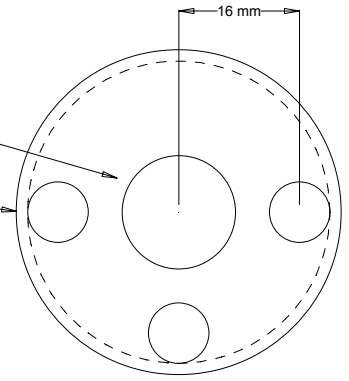
air holes 5mm dia., 6 off, none on crankshaft side



mounting flange

hedgehog spikes

Boiler end plates from 1.5mm copper sheet

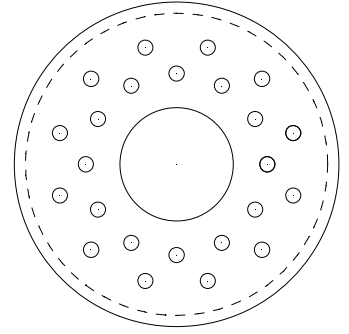


15mm hole for flue

8mm holes for bushes

Boiler shell from 1mm, 1.5mm or 1.16" copper tube. Flue from 15mm copper tube.

Both plates initially 50mm diameter before flanging over circular former 40mm diameter. Drill holes after flanging



Bottom plate 43mm diameter after flanging. Should be a tight fit in the boiler shell.

15mm centre hole for flue, 2mm holes for hedgehog spikes from thick copper wire.

Boiler for de Winton  
Dave Watkins  
9/8/97